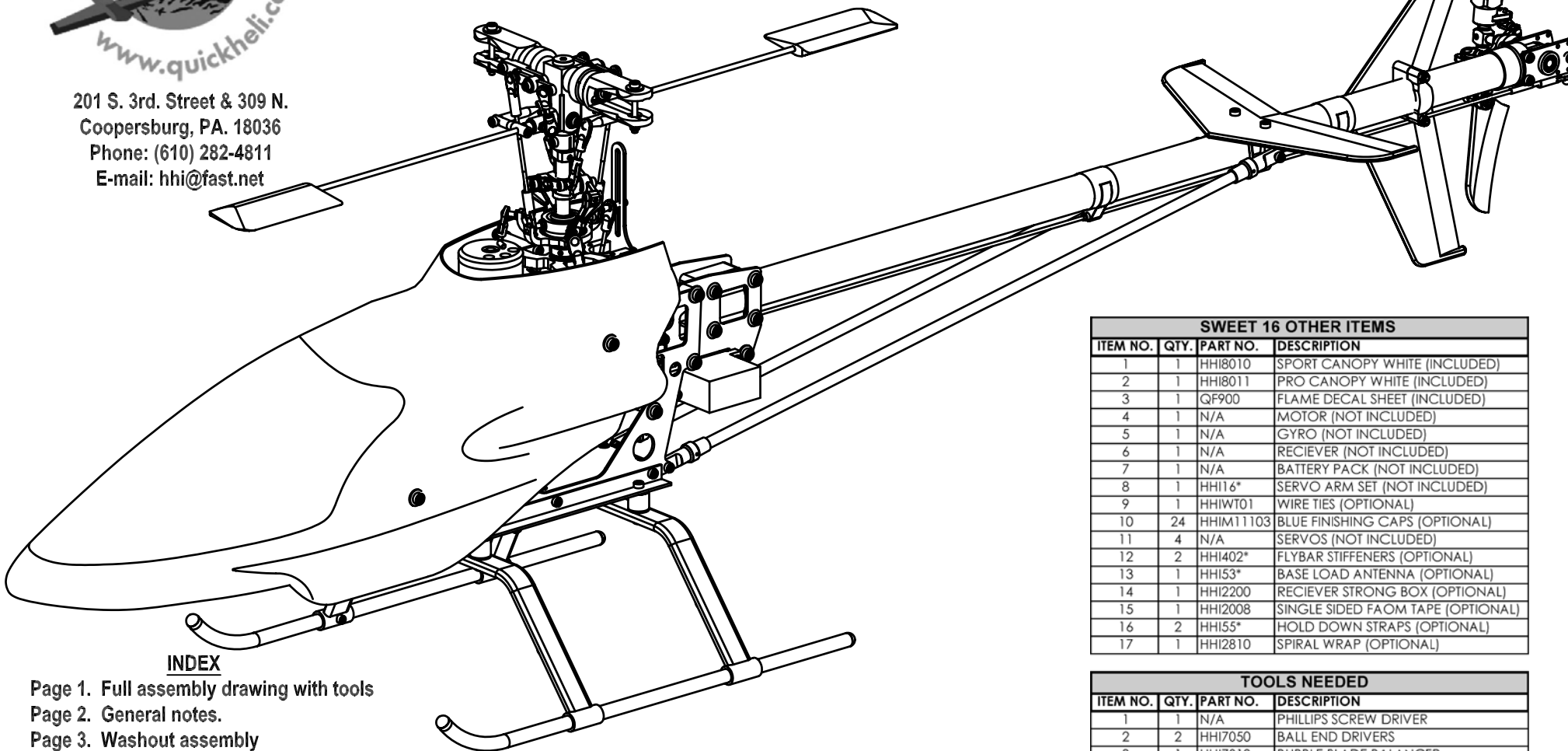




201 S. 3rd. Street & 309 N.
Coopersburg, PA. 18036
Phone: (610) 282-4811
E-mail: hhi@fast.net

Drawn By: Kent Sharp

Place the canopy where you like, mark the holes for the canopy standoffs. Use a 1/4" drill bit. Place the grommets in the holes and secure the canopy to the helicopter using (4) M3x14 cap head screws.



INDEX

- Page 1. Full assembly drawing with tools
- Page 2. General notes.
- Page 3. Washout assembly
- Page 4. Tail pitch slider assembly
- Page 5. Tail rotor assembly
- Page 6. Swash plate assembly
- Page 7. Counter gear assembly
- Page 8. Main shaft & motor mount assembly
- Page 9. Tail boom assembly
- Page 10. Frame assembly
- Page 11. Frame assembly
- Page 12. Sport head assembly
- Page 13. Pro head assembly

SWEET-16 EP MODEL

SWEET 16 OTHER ITEMS			
ITEM NO.	QTY.	PART NO.	DESCRIPTION
1	1	HHI8010	SPORT CANOPY WHITE (INCLUDED)
2	1	HHI8011	PRO CANOPY WHITE (INCLUDED)
3	1	QF900	FLAME DECAL SHEET (INCLUDED)
4	1	N/A	MOTOR (NOT INCLUDED)
5	1	N/A	GYRO (NOT INCLUDED)
6	1	N/A	RECIEVER (NOT INCLUDED)
7	1	N/A	BATTERY PACK (NOT INCLUDED)
8	1	HHI16*	SERVO ARM SET (NOT INCLUDED)
9	1	HHIWT01	WIRE TIES (OPTIONAL)
10	24	HHIM11103	BLUE FINISHING CAPS (OPTIONAL)
11	4	N/A	SERVOS (NOT INCLUDED)
12	2	HHI402*	FLYBAR STIFFENERS (OPTIONAL)
13	1	HHI53*	BASE LOAD ANTENNA (OPTIONAL)
14	1	HHI2200	RECIEVER STRONG BOX (OPTIONAL)
15	1	HHI2008	SINGLE SIDED FAOM TAPE (OPTIONAL)
16	2	HHI55*	HOLD DOWN STRAPS (OPTIONAL)
17	1	HHI2810	SPIRAL WRAP (OPTIONAL)

TOOLS NEEDED			
ITEM NO.	QTY.	PART NO.	DESCRIPTION
1	1	N/A	PHILLIPS SCREW DRIVER
2	2	HHI7050	BALL END DRIVERS
3	1	HHI7010	BUBBLE BLADE BALANCER
4	1	DUB499	HIGH POINT BALANCER
5	1	HHI7020	PISTON HEAD LOCK
6	1	HHI7320	6PC NUT & ALLEN DRIVER SET
7	1	HHI7001	PITCH GAUGE
8	1	HHI7000	COMPOSITE PADDLE GAUGES
9	1	HHI7040	UNIVERSAL FLYBAR LOCK
10	1	N/A	RULER
11	1	N/A	HOBBIE KNIFE
12	1	N/A	NEEDLE NOSE PLIERS
13	1	N/A	SCISSORS
14	1	GBG1	CA GLUE
15	1	PT40	LOCK-TITE



201 S. 3rd. Street & 309 N.
Coopersburg, PA. 18036
Phone: (610) 282-4811
E-mail: hhi@fast.net

Quick Pre-Assembly Information

Quick Worldwide & Hobbies & Helis International:

Quick of Japan and Hobbies & Helis International teamed up to make parts 6 years ago. In the beginning, our specialty was the manufacturing of various upgrade parts for many of the plastic helicopters on the market. After four years of distributing numerous upgrades and crash parts for other helicopters, we decided to develop our own line of helicopters. That's when the notion of the Quick Learner was conceived. As the development of the kit began, initial designs were approved, proto-types were made and flown - all to ensure that the design was flawless. No minor details were over-looked. After countless hours of hard work and dedication, Quick-World-Wide is proud to release the first in a new standard in Helicopters - the Quick Learner.

Warning:

The radio-controlled model helicopter contained in this kit is not a toy. Rather, it is a sophisticated piece of equipment. This Product is not recommended for use by children, without adult supervision. Radio controlled models such as this, are capable of causing both property damage and/or bodily harm to both the operator/assembler and/or spectator if not properly assembled and operated. Hobbies & Helis assumes no liability for damage that could occur from the assembly and/or use/misuse of this product.

AMA:

We strongly encourage all prospective and current R/C aircraft pilots to join the Academy of Model Aeronautics. The AMA is a non-profit organization that provides services to model aircraft pilots. As an AMA member, you will receive a monthly magazine entitled Model Aviation, as well as a liability insurance plan to cover against possible accident or injury. All AMA charter aircraft clubs require individuals to hold a current AMA sporting license prior to the operation of their model.

Pre-Assembly Information:

Quick Helicopters are put together with care and quality topping our priority list. A recommendation when you are ready to begin building this model is that you examine the kit and understand the contents of the packages and read thoroughly before starting the assembly process. Purchase a parts box for all the nuts, bolts, and other small parts. We take great care to ensure all parts are in the box.

Radio Requirements

Radios:

Hobbies & Helis & its distributors carry various lines of helicopter radios. Any radio that supports EMS/CCPM Mixing will work fine. We recommend using an eight-channel or better radio, although a six channel radio is all that is required.

Servos:

(x3) Mid size servo's – Approx screw pinning dims 8x39mm.
For rudder use either (x1) Mid size or Standard size. Standard size screw pinning dims are 10x50mm

Introduction:

Please read through the entire manual before starting your construction of the Quickie. If there are any questions or concerns regarding the assembly of the helicopter you can call Hobbies & Helis International (610)-282-4811 or Email the any of the following techs.

Technical Support Personnel:

- Jon – Jon@quickworldwide.com (all info.)
- Kent – kent@quickworldwide.com (mechanical info.)
- Bjorn – bjorn@quickworldwide.com (motors, servo's & electronics)
- Irwin – hhi@fast.net (Head cheese)

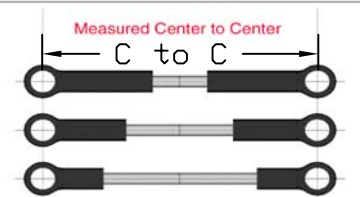
Threadlocker Warning (Very Important):

This is a general warning about the use of threadlocker and its importance. Threadlocker must be used anywhere that a metal fastener i.e. (M2, M3, M4 Cap Head Bolts, Set Screws etc.) are threaded into a metal part i.e. (Bearing Blocks, Cross-members, etc.). The failure to use threadlocker can result in parts falling a part and possible loss of control of the model, which can lead to a crash. Also, be sure to check your bolts' tightness after each flight. Many bolts, even with the use of threadlocker can come loose from vibration in the helicopter.

Linkage Rod Setup

In the following table the linkages will be measured center to center as per the picture. The table explains the amount of rods you need to make and which ball links to use on each end. This will get the helicopter close to finished setup, as always you will need to make some final adjustments to maximize the performance of your Helicopter

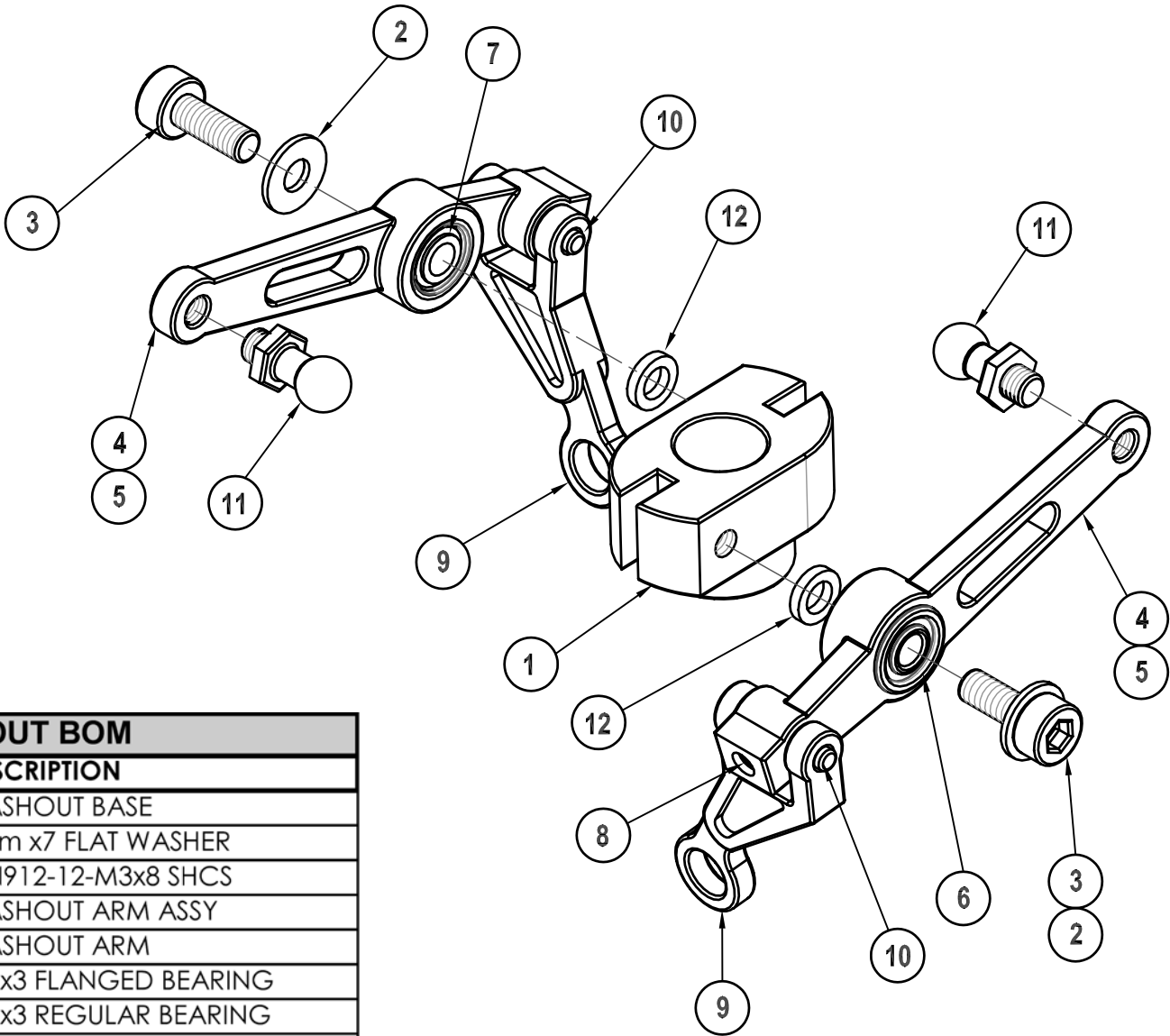
Replacement Part #:
Linkage Rod Set – QC150
All Linkages available individually just know the size



- Flybar to Wash out Linkage approx 40mm C to C
- Swash to Servo Linkage approx 50mm C to C
- Swash to Hiller arm approx 87mm to C to C



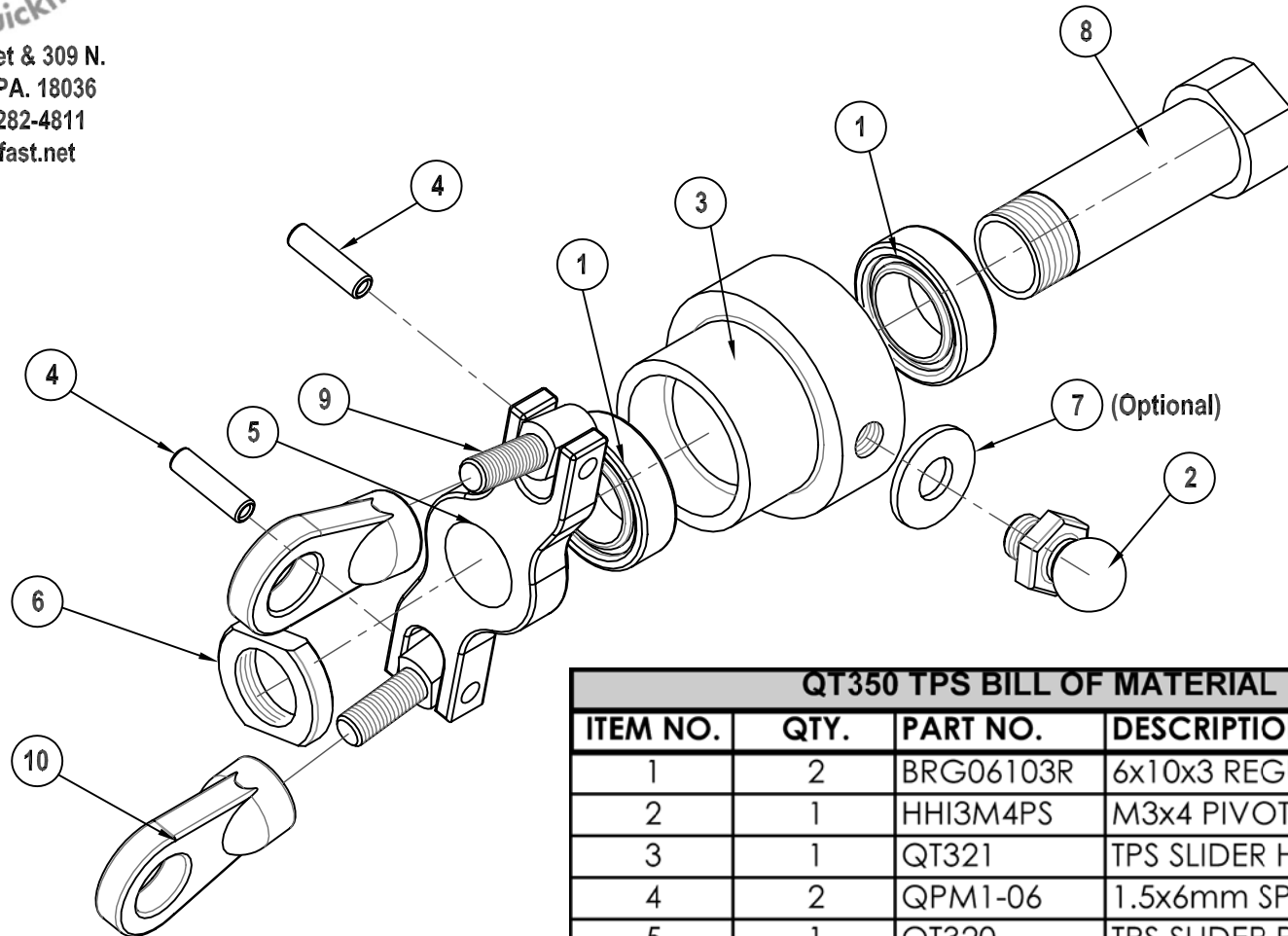
201 S. 3rd. Street & 309 N.
 Coopersburg, PA. 18036
 Phone: (610) 282-4811
 E-mail: hhi@fast.net



QC152 Q-16 WASHOUT BOM			
ITEM NO.	QTY.	PART NO.	DESCRIPTION
1	1	QC104	WASHOUT BASE
2	2	HHI3M7FW	3mm x7 FLAT WASHER
3	2	HHI3M08C	DIN912-12-M3x8 SHCS
4	2	QC105	WASHOUT ARM ASSY
5	2	QC105A	WASHOUT ARM
6	2	BRG03073F	3x7x3 FLANGED BEARING
7	2	BRG03073R	3x7x3 REGULAR BEARING
8	2	HHI3M03SS	M3x3 SET SCREW
9	2	QC358	WASHOUT LINK
10	2	QC606	WASHOUT LINK PIN 2x12mm
11	2	HHI3M6PS	M3x6 PIVOT BALL STUD
12	2	HHI3M5X1	HEAD ASSY SPACER 3x5x1mm



201 S. 3rd. Street & 309 N.
 Coopersburg, PA. 18036
 Phone: (610) 282-4811
 E-mail: hhi@fast.net

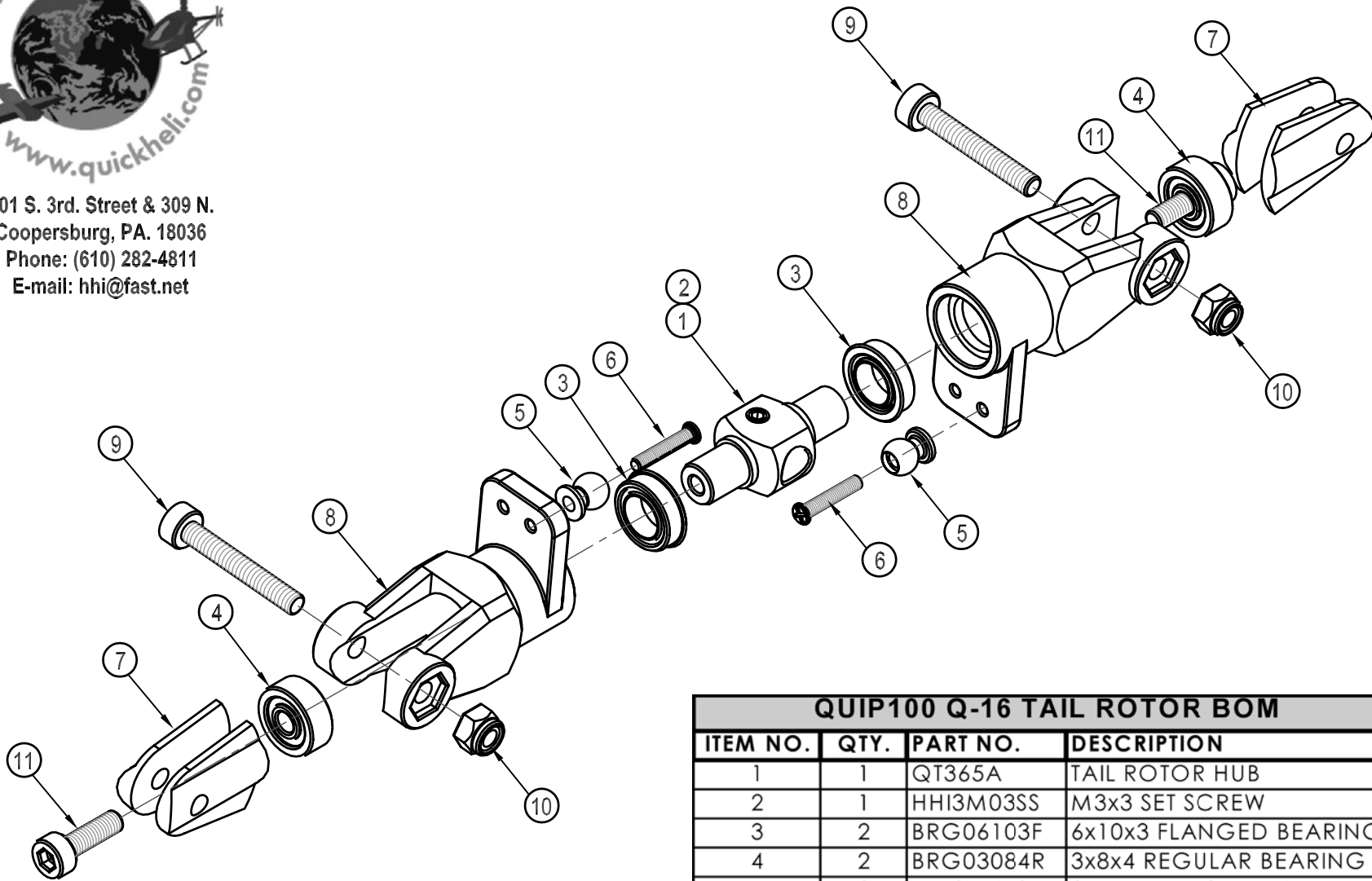


QT350 TPS BILL OF MATERIAL

ITEM NO.	QTY.	PART NO.	DESCRIPTION
1	2	BRG06103R	6x10x3 REGULAR BEARING
2	1	HHI3M4PS	M3x4 PIVOT BALL STUD
3	1	QT321	TPS SLIDER HUB
4	2	QPM1-06	1.5x6mm SPRING ROLL PIN
5	1	QT320	TPS SLIDER PITCH PLATE
6	1	QT323	TPS ALUM. 6mm THREADED NUT
7	1	HHI3M7FW	3mm x7 FLAT WASHER
8	1	QT322	TPS 6x20MM BRASS BUSHING SLEEVE
9	2	QT350A	TPS 2.3mm LINK PIN SCREW
10	2	HHI2020	2.3 SHORT BALL LINK (BLACK)



201 S. 3rd. Street & 309 N.
 Coopersburg, PA. 18036
 Phone: (610) 282-4811
 E-mail: hhi@fast.net



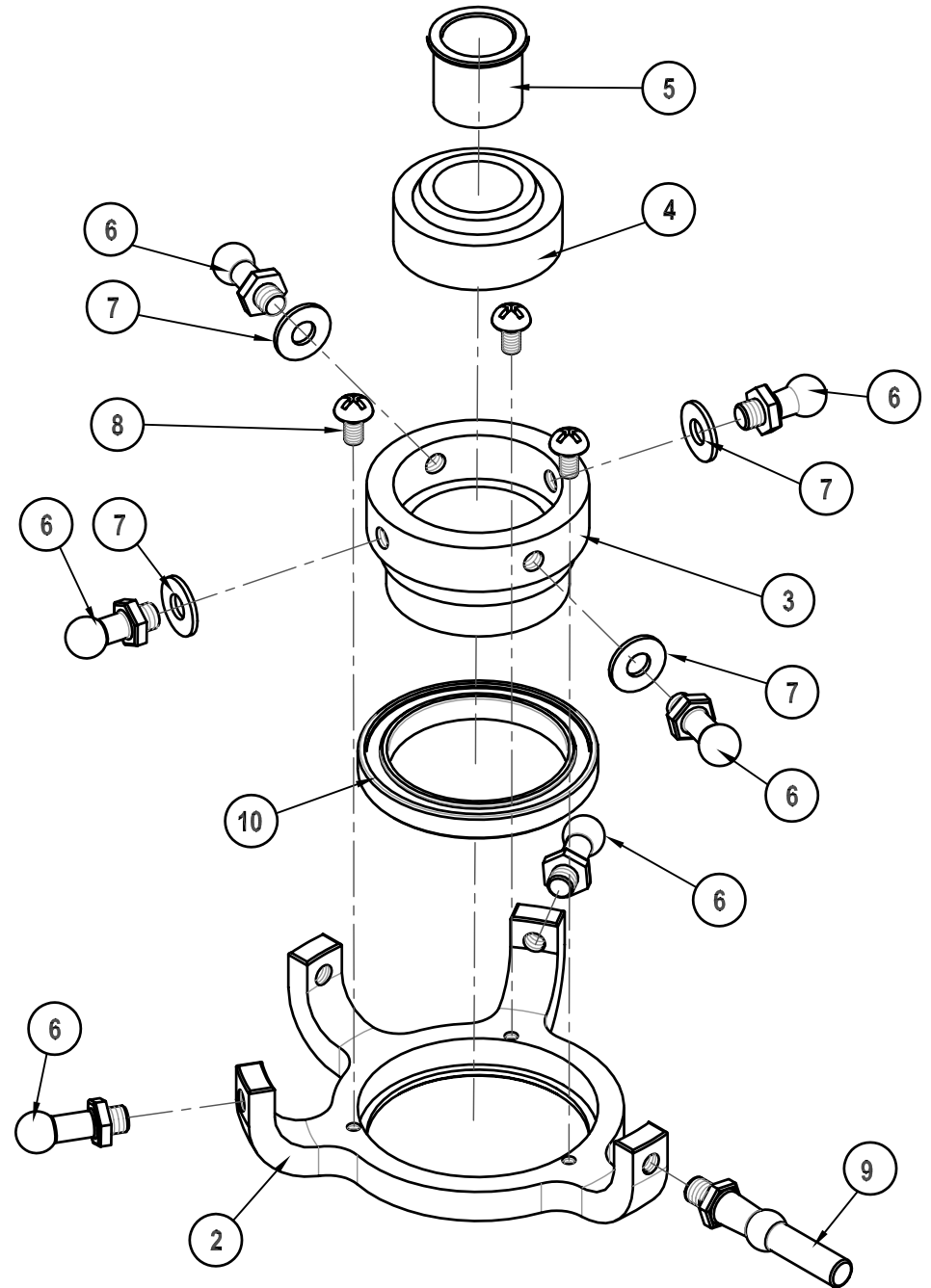
QUIP100 Q-16 TAIL ROTOR BOM

ITEM NO.	QTY.	PART NO.	DESCRIPTION
1	1	QT365A	TAIL ROTOR HUB
2	1	HHI3M03SS	M3x3 SET SCREW
3	2	BRG06103F	6x10x3 FLANGED BEARING
4	2	BRG03084R	3x8x4 REGULAR BEARING
5	2	HHI2M4PS	2mm DIA BORE x 4mm PIVOT BALL STUD
6	2	HHI2M10P	DIN912-12-M2x10 PHCS
7	4	QT365B	TAIL BLADE GRIP SPACER (PLASTIC)
8	2	QT365C	TAIL BLADE GRIP (PLASTIC)
9	2	HHI3M20C	DIN912-12-M3x20 SHCS
10	2	HHI03MLN	3mm NYLON LOCK NUT
11	2	HHI3M10C	DIN912-12-M3x10 SHCS



201 S. 3rd. Street & 309 N.
 Coopersburg, PA. 18036
 Phone: (610) 282-4811
 E-mail: hhi@fast.net

Drawn By: Kent Sharp



QCE151 SWASH PLATE ASSY BOM			
ITEM NO.	QTY.	PART NO.	DESCRIPTION
1	1	QCE151	SWASH PLATE ASSEMBLY
2	1	QC121	SWASH LOWER RING ALUM CASING
3	1	QC120	SWASH UPPER RING CASING
4	1	BRG101909S	19x15x6mm SPHERICAL BEARING
5	1	QC322	BRASS SLEEVE 8x10mm FLANGED
6	6	HHi3M7PS	M3x7 PIVOT BALL STUD
7	4	HHi3M7FW	3mm x7 FLAT WASHER
8	3	HHi2M04B	DIN912-12-M2x4 BHCS
9	1	QCE001	ANTI-ROTATION PIN FOR EP
10	1	BRG20273R	20x27x3 REGULAR BEARING

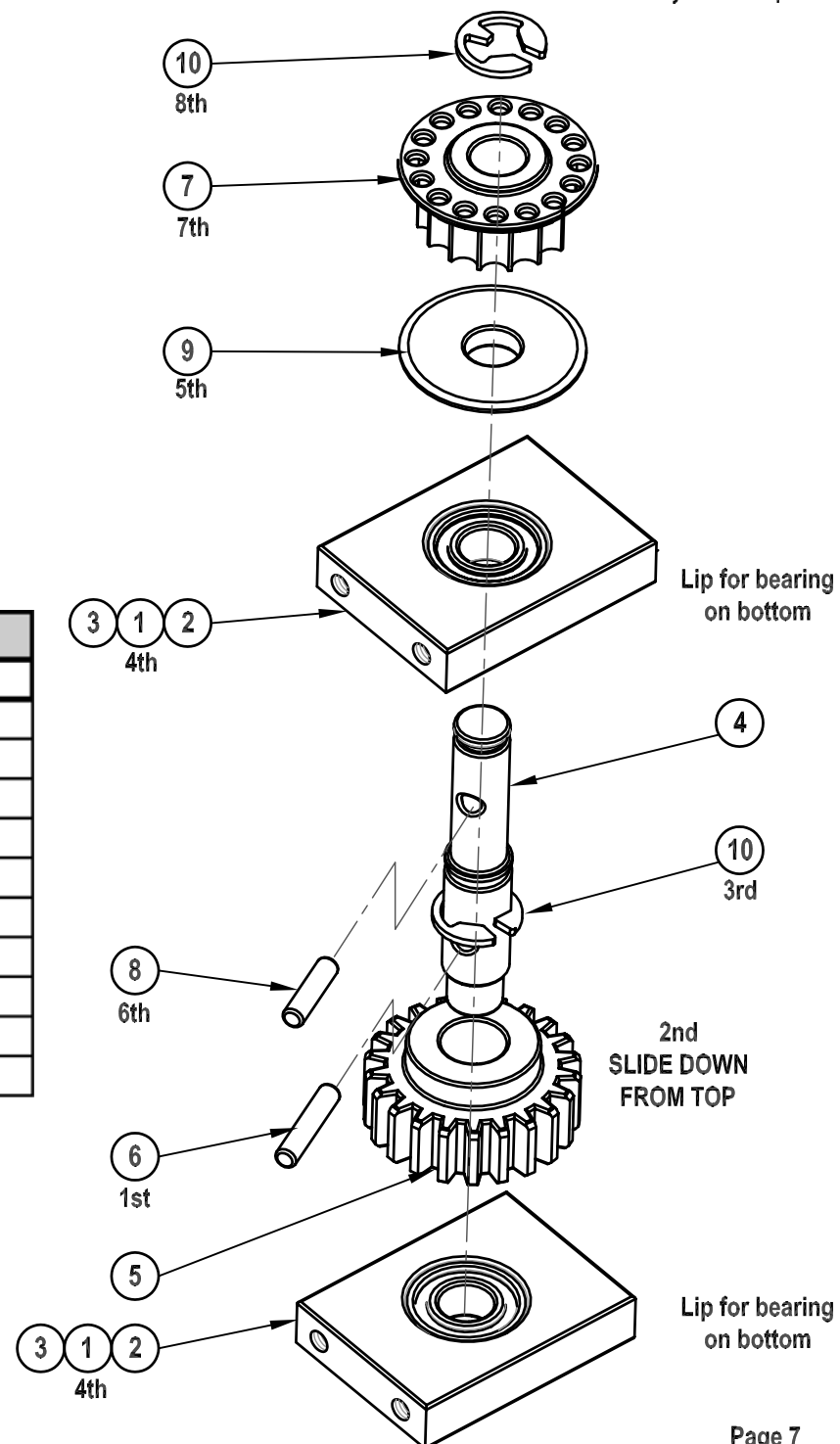


201 S. 3rd. Street & 309 N.
 Coopersburg, PA. 18036
 Phone: (610) 282-4811
 E-mail: hhi@fast.net

Drawn By: Kent Sharp

QD163 Q-16 COUNTER GEAR BOM

ITEM NO.	QTY.	PART NO.	DESCRIPTION
1	2	QD153	COUNTER GEAR BEARING BLOCK ASSY
2	2	QD153A	COUNTER GEAR BEARING BLOCK
3	2	BRG05114R	5x11x4 REGULAR BEARING
4	1	QD151A	COUNTER GEAR SHAFT
5	1	QD151B	COUNTER GEAR
6	1	QD151C	COUNTER GEAR LOCK PIN 2x10mm
7	1	QD164	COUNTER GEAR PULLEY
8	1	QD164A	COUNTER GEAR PULLEY LOCK PIN 2x8mm
9	1	QD165	COUNTER GEAR PULLEY SIDE PLATE
10	2	QPM4CLIP	4mm E-CLIP





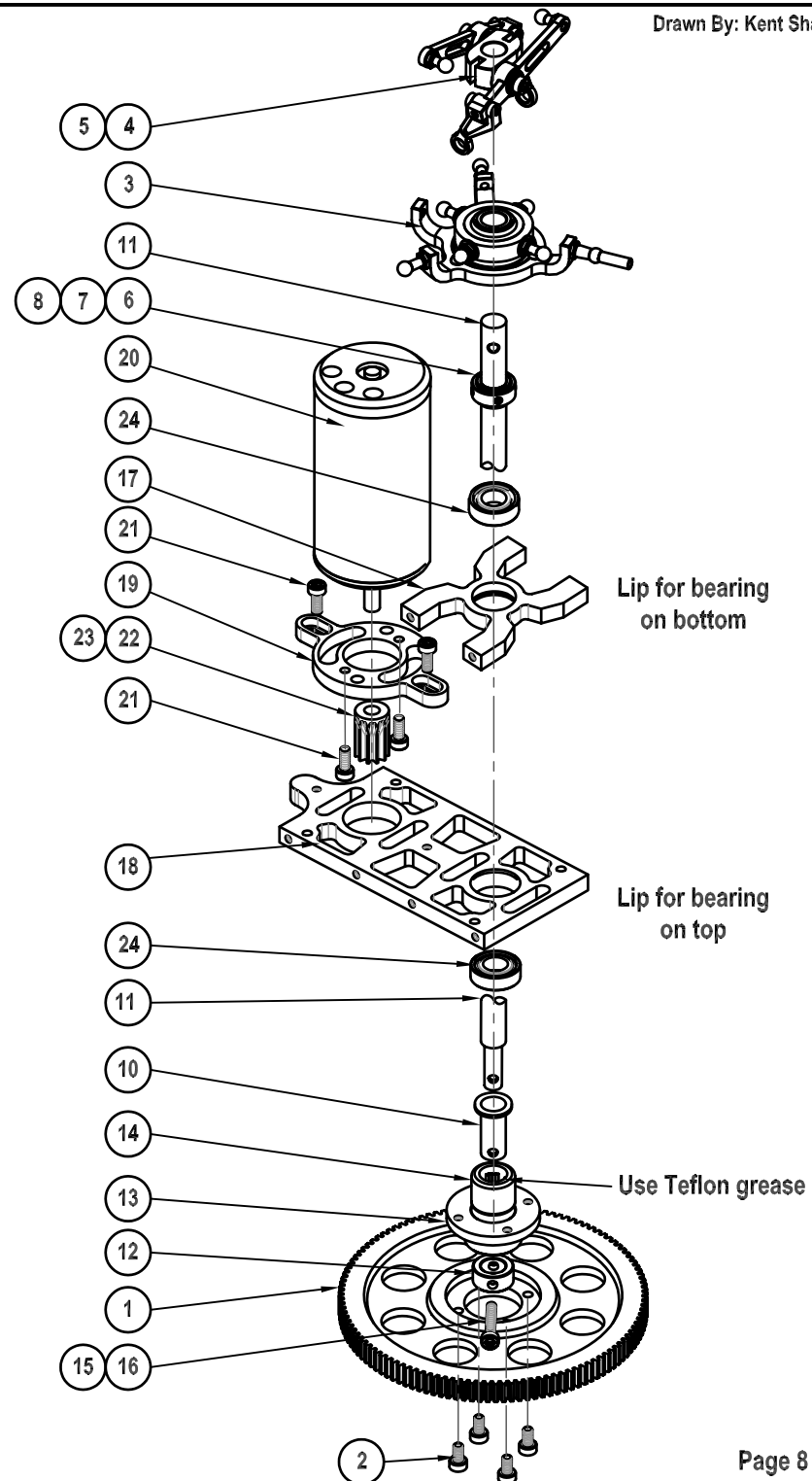
201 S. 3rd. Street & 309 N.
Coopersburg, PA. 18036
Phone: (610) 282-4811
E-mail: hhi@fast.net

Note: No slop of shaft from hub
to Main gear collar

Finally install the motor assembly into the helicopter. Be sure not to set the gear mesh too tight or too loose. A good way to set the mesh is to slide a piece of notebook paper between the gears and then tighten the bolts. This will give an idea mesh.

Q-16 MAIN SHAFT & MOTOR MOUNT BOM

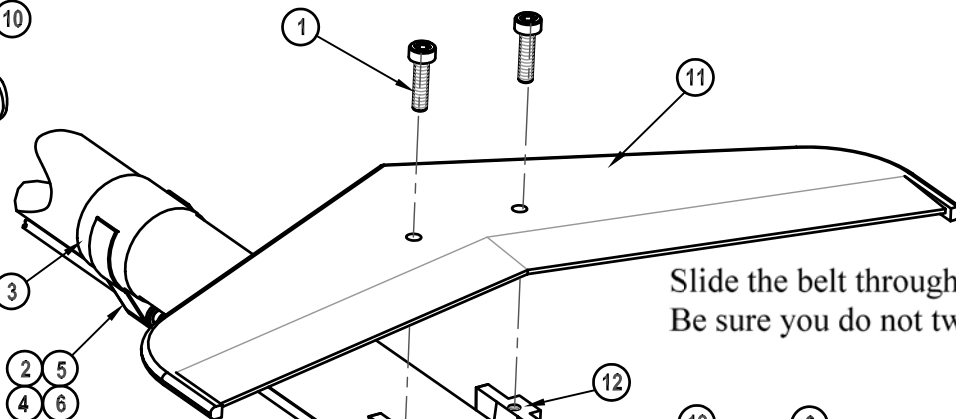
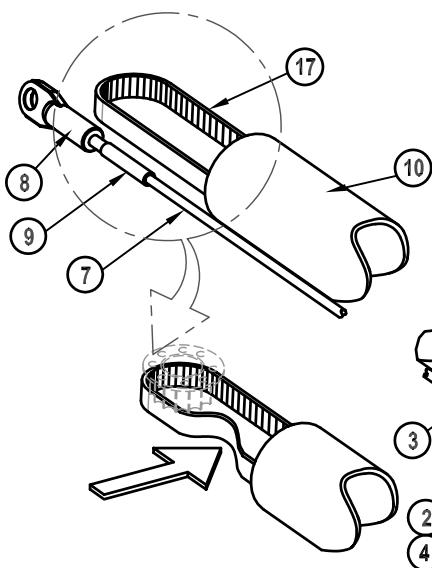
ITEM NO.	QTY.	PART NO.	DESCRIPTION
1	1	QD155	MAIN GEAR
2	4	HHI3M06C	DIN912-12-M3x6 SHCS
3	1	QCE151	SWASH PLATE ASSEMBLY
4	1	QC152	WASHOUT UNIT ASSY
5	1	HHI3M5SS	M3x5 SET SCREW
6	1	QD157	MAIN GEAR SHAFT COLLAR ASSY
7	1	QD157A	MAIN GEAR SHAFT COLLAR 8x14x7mm
8	4	HHI3M03SS	M3x3 SET SCREW
9	1	QD158	PRO AUTO ROTATION SYSTEM
10	1	QD158B	MAIN GEAR SHAFT HUB SLEAVE
11	1	QD158A	MAIN GEAR SHAFT
12	1	QD158C	MAIN GEAR SHAFT COLLAR
13	1	QD158D	MAIN SHAFT GEAR HUB
14	1	BRG8M1412OW	ONE WAY BEARING
15	1	HHI3M18C	DIN912-12-M3x18 SHCS
16	1	HHI03MLN	3mm NYLON LOCK NUT
17	1	QFE159	MAIN SHAFT BEARING BLOCK
18	1	QDE166	MOTOR & MAIN SHAFT MOUNT FRAME
19	1	QDE169	MOTOR SPACER MOUNT
20	1	AVE36383	AVEOX MOTOR
21	4	HHI3M08C	DIN912-12-M3x8 SHCS
22	1	QDE153	11 TEETH PINION GEAR
23	1	HHI3M5SS	M3x5 SET SCREW
24	2	BRG08165R	8x16x5 REGULAR BEARING





201 S. 3rd. Street & 309 N.
Coopersburg, PA. 18036
Phone: (610) 282-4811
E-mail: hhi@fast.net

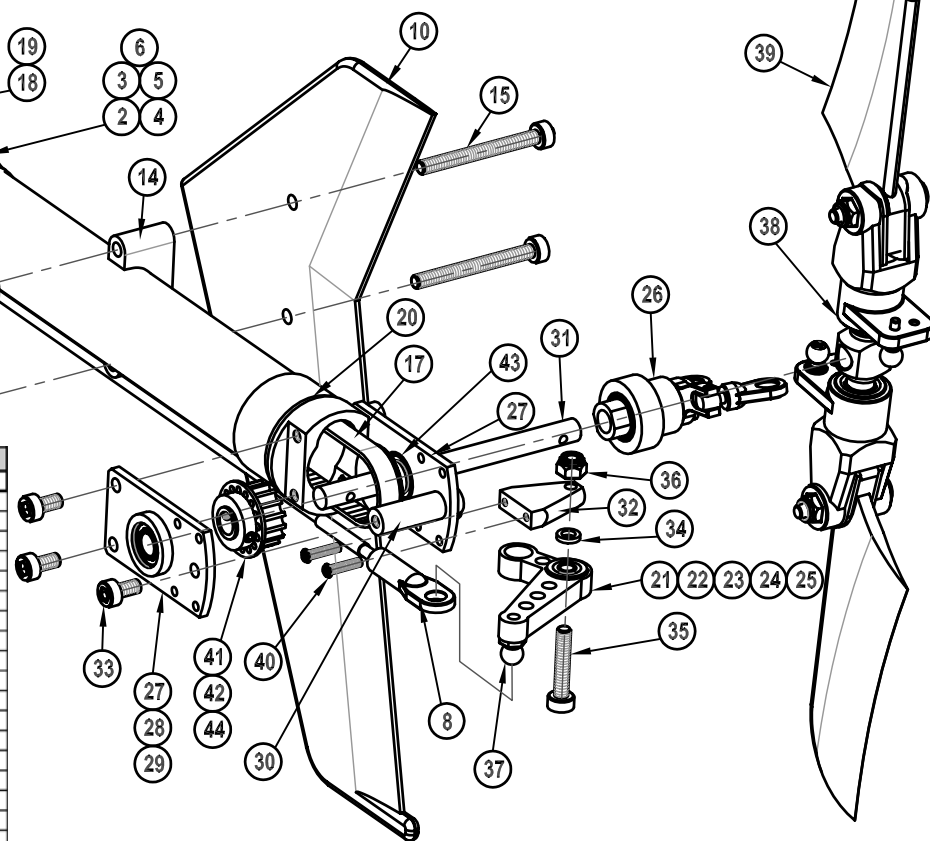
Assemble the push rod guides. There are three pieces the main clip and two inner sleeves. Simply slide the two sleeves into each other and then into the main clip and glue. Putting electrical tape onto the boom before gluing is good, so it is possible to reuse the clip later.
(HHI2900 – Rod Guides)



Slide the belt through the boom.
Be sure you do not twist the belt.

Belt should push no more than 60 %
of boom width when tightening, &
no less than 30%.

When attaching Tail Boom assembly to Frame Boom
Halves and attaching belt to counter gear pulley.
Have tail rotor parallel with Head assembly (on top).
Turn boom 90° clockwise.



Q-16 TAIL BOOM BOM

ITEM NO.	QTY.	PART NO.	DESCRIPTION	ITEM NO.	QTY.	PART NO.	DESCRIPTION
1	2	HHI3M12C	DIN912-12-M3x12 SHCS	23	1	QT331	PITCH LEVER CUP
2	2	HHI2900	PUSH ROD GUIDE ASSY	24	1	BRG03083F	3x8x3 FLANGED BEARING
3	1	TAPE	ELECTRICAL TAPE FOR TAIL BOOM	25	1	BRG03083R	REGULAR BEARING
4	1	HHI2900A	PUSH ROD GUIDE (PLASTIC)	26	1	QT350	TAIL PITCH SLIDER ASSY (SEE DRAWING)
5	1	HHI2900B	PUSH ROD GUIDE INSERT (PLASTIC)	27	2	QT162	TAIL CASE SIDE PLATE ASSY
6	1	HHI2900C	PUSH ROD GUIDE INSERT TUBE (PLASTIC)	28	1	BRG05114R	5x11x4 REGULAR BEARING
7	1	HHI4070	2mm CARBON PUSH ROD	29	1	QT103	TAIL CASE SIDE PLATE
8	2	HHI2022	2.3 LONG BALL END (BLACK) PLASTIC	30	1	QT159	3x6x16mm CROSS MEMBER
9	2	HHI4070E	PUSH ROD END 2.3mm	31	1	QT157	TAIL OUTPUT SHAFT
10	1	QF324V	VERTICAL FIN (WHITE)	32	1	QT151A	TAIL PITCH LEVER ARM MOUNT
11	1	QF324H	HORIZONTAL FIN (WHITE)	33	6	HHI3M06C	DIN912-12-M3x6 SHCS
12	1	QT360	HORIZ. FINMOUNT C-CLAMP	34	1	HHI3M5X1	HEAD ASSY SPACER 3x5x1mm
13	1	QT361A	VERT. FIN MOUNT	35	1	HHI3M16C	DIN912-12-M3x16 SHCS
14	1	QT361B	VERT. FIN MOUNT	36	1	HHI03MLN	3mm NYLON LOCK NUT
15	2	HHI3M30C	DIN912-12-M3x30 SHCS	37	1	HHI3M4PS	M3x4 PIVOT BALL STUD
16	2	HHI03MLN	3mm NYLON LOCK NUT	38	1	QUIP100	TAIL ROTOR HUB ASSY (SEE DRAWING)
17	1	QT165 TAIL	TAIL GEAR BELT	39	2	QEP1080	80mm POLYCARB. TAIL BLADE
18	1	QT169	TAIL BOOM ASSY	40	2	HHI2M08P	DIN912-12-M2x8 PHCS
19	1	QT354B	20x620mm BOOM (BLUE ANODIZED)	41	1	QT163	TAIL PULLEY GEAR ASSY
20	1	QT169B	TAIL BOOM END	42	1	QT163A	TAIL PULLEY GEAR
21	1	QT351	TAIL PITCH LEVER ASSEMBLY	43	1	QT163B	TAIL PULLEY GEAR SIDE PLATE
22	1	QT350	TAIL PITCH LEVER ARM	44	1	HHI3M03SS	M3x3 SET SCREW

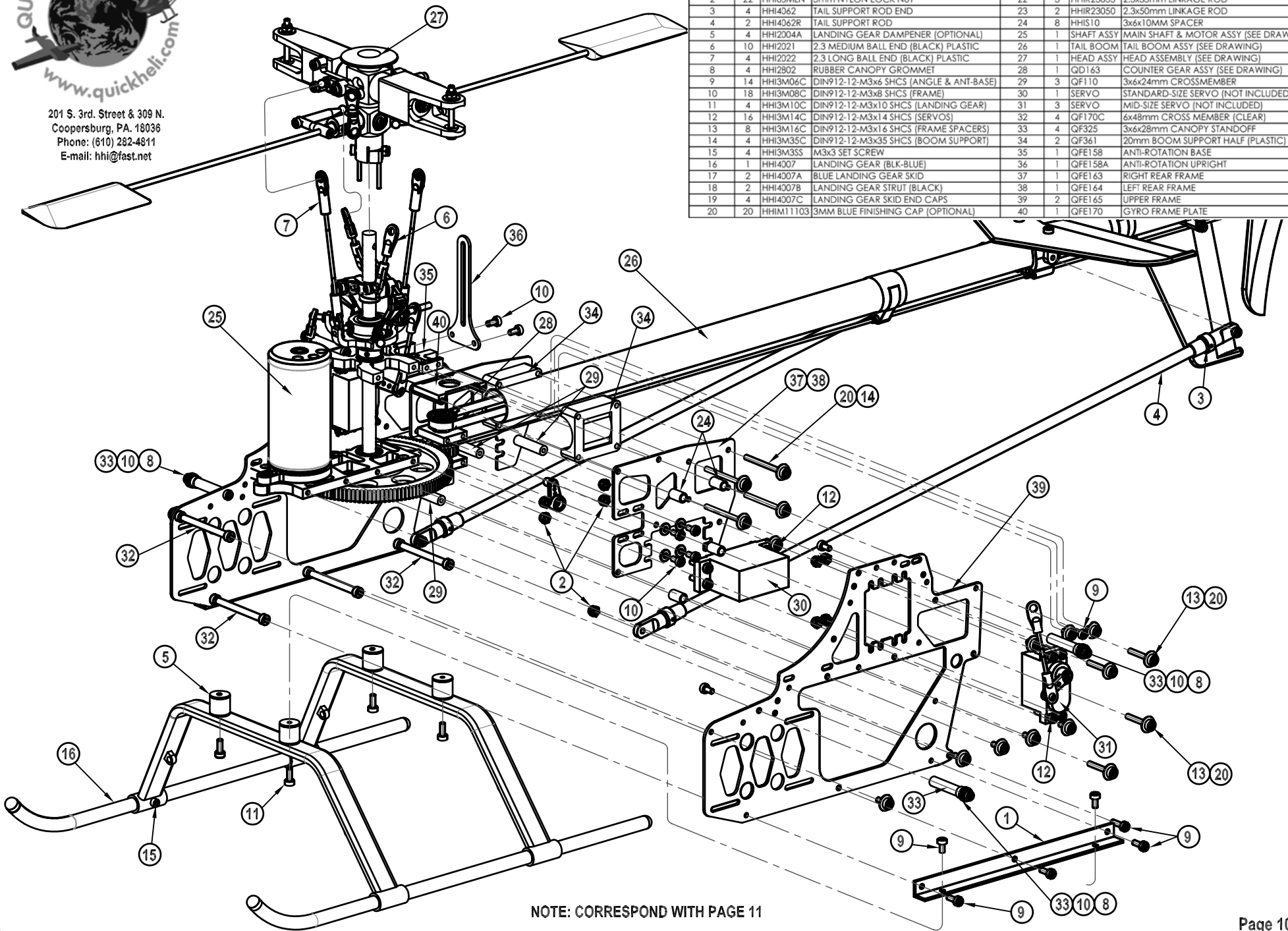


201 S. 3rd. Street & 309 N.
Coopersburg, PA. 18036
Phone: (610) 282-4811
E-mail: hhi@fast.net

Drawn By: Kent Sharp

SWEET 16 BOM

ITEM NO.	QTY.	PART NO.	DESCRIPTION	ITEM NO.	QTY.	PART NO.	DESCRIPTION
1	2	QFE171	ANGLE FRAME (BLUE)	21	2	HHR23020	2.3x20mm LINKAGE ROD
2	22	HHI03MLN	3mm NYLON LOCK NUT	22	3	HHR23035	2.3x35mm LINKAGE ROD
3	4	HHI4062	TAIL SUPPORT ROD END	23	2	HHR23050	2.3x50mm LINKAGE ROD
4	2	HHI4062R	TAIL SUPPORT ROD	24	8	HHS10	3x6x10MM SPACER
5	4	HHI2004A	LANDING GEAR DAMPENER (OPTIONAL)	25	1		SHAFT ASSY MAIN SHAFT & MOTOR ASSY (SEE DRAWING)
6	10	HHI2021	2.3 MEDIUM BALL END (BLACK) PLASTIC	26	1		TAIL BOOM
7	4	HHI2022	2.3 LONG BALL END (BLACK) PLASTIC	27	1		HEAD ASSY HEAD ASSEMBLY (SEE DRAWING)
8	4	HHI2802	RUBBER CANOPY GROMMET	28	1	QD163	COUNTER GEAR ASSY (SEE DRAWING)
9	14	HHI3M06C	DIN912-12-M3x6 SHCS (ANGLE & ANT-BASE)	29	3	QF110	3x6x24mm CROSSMEMBER
10	18	HHI3M08C	DIN912-12-M3x8 SHCS (FRAME)	30	1	SERVO	STANDARD-SIZE SERVO (NOT INCLUDED)
11	4	HHI3M10C	DIN912-12-M3x10 SHCS (LANDING GEAR)	31	3	SERVO	MID-SIZE SERVO (NOT INCLUDED)
12	16	HHI3M14C	DIN912-12-M3x14 SHCS (SERVOS)	32	4	QF170C	6x48mm CROSS MEMBER (CLEAR)
13	8	HHI3M16C	DIN912-12-M3x16 SHCS (FRAME SPACERS)	33	4	QF325	3x6x28mm CANOPY STANDOFF
14	4	HHI3M35C	DIN912-12-M3x35 SHCS (BOOM SUPPORT)	34	2	QF361	20mm BOOM SUPPORT HALF (PLASTIC)
15	4	HHI3M35S	M3x3 SET SCREW	35	1	QFE158	ANTI-ROTATION BASE
16	1	HHI4007	LANDING GEAR (BLK-BLUE)	36	1	QFE158A	ANTI-ROTATION UPRIGHT
17	2	HHI4007A	BLUE LANDING GEAR SKID	37	1	QFE163	RIGHT REAR FRAME
18	2	HHI4007B	LANDING GEAR STRUT (BLACK)	38	1	QFE164	LEFT REAR FRAME
19	4	HHI4007C	LANDING GEAR SKID END CAPS	39	2	QFE165	UPPER FRAME
20	20	HHI1M1103	3MM BLUE FINISHING CAP (OPTIONAL)	40	1	QFE170	GYRO FRAME PLATE

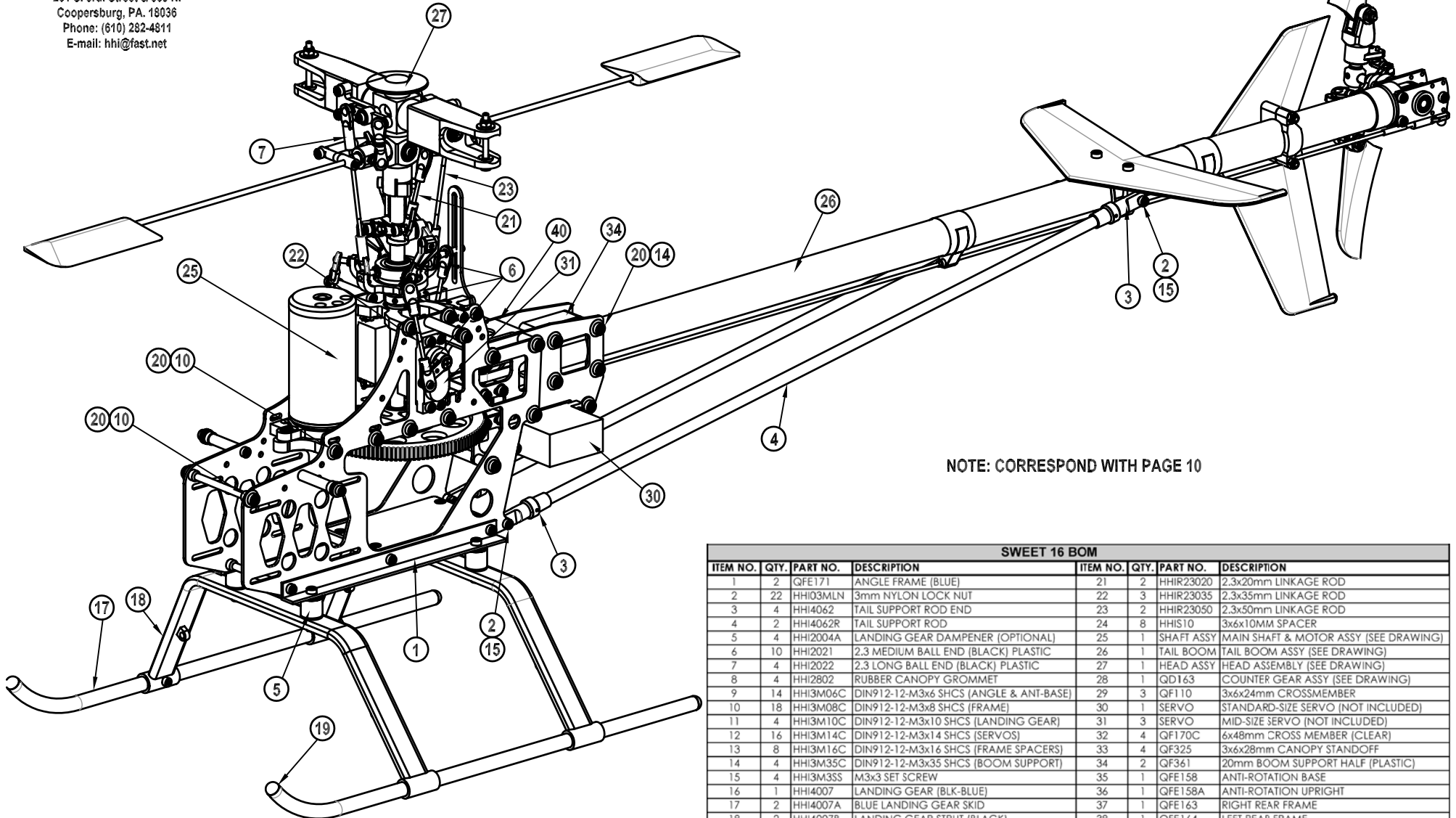


NOTE: CORRESPOND WITH PAGE 11



201 S. 3rd. Street & 309 N.
Coopersburg, PA. 18036
Phone: (610) 282-4811
E-mail: hhi@fast.net

Drawn By: Kent Sharp



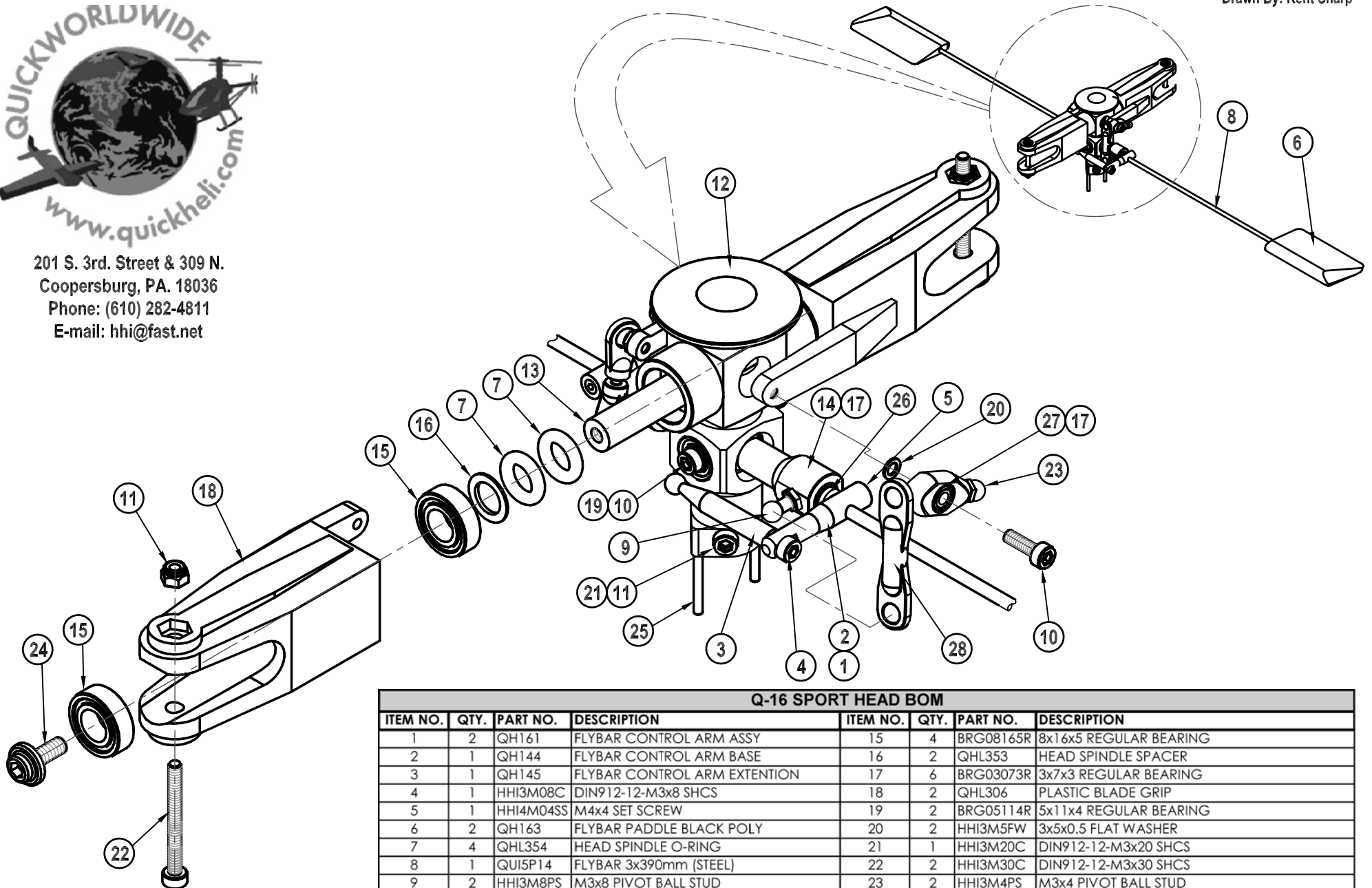
NOTE: CORRESPOND WITH PAGE 10

SWEET 16 BOM							
ITEM NO.	QTY.	PART NO.	DESCRIPTION	ITEM NO.	QTY.	PART NO.	DESCRIPTION
1	2	QFE171	ANGLE FRAME (BLUE)	21	2	HHIR23020	2.3x20mm LINKAGE ROD
2	22	HHI03MLN	3mm NYLON LOCK NUT	22	3	HHIR23035	2.3x35mm LINKAGE ROD
3	4	HHI4062	TAIL SUPPORT ROD END	23	2	HHIR23050	2.3x50mm LINKAGE ROD
4	2	HHI4062R	TAIL SUPPORT ROD	24	8	HHIS10	3x6x10MM SPACER
5	4	HHI2004A	LANDING GEAR DAMPENER (OPTIONAL)	25	1	SHAFT ASSY	MAIN SHAFT & MOTOR ASSY (SEE DRAWING)
6	10	HHI2021	2.3 MEDIUM BALL END (BLACK) PLASTIC	26	1	TAIL BOOM	TAIL BOOM ASSY (SEE DRAWING)
7	4	HHI2022	2.3 LONG BALL END (BLACK) PLASTIC	27	1	HEAD ASSY	HEAD ASSEMBLY (SEE DRAWING)
8	4	HHI2802	RUBBER CANOPY GROMMET	28	1	QD163	COUNTER GEAR ASSY (SEE DRAWING)
9	14	HHI3M06C	DIN912-12-M3x6 SHCS (ANGLE & ANT-BASE)	29	3	QF110	3x6x24mm CROSSMEMBER
10	18	HHI3M08C	DIN912-12-M3x8 SHCS (FRAME)	30	1	SERVO	STANDARD-SIZE SERVO (NOT INCLUDED)
11	4	HHI3M10C	DIN912-12-M3x10 SHCS (LANDING GEAR)	31	3	SERVO	MID-SIZE SERVO (NOT INCLUDED)
12	16	HHI3M14C	DIN912-12-M3x14 SHCS (SERVOS)	32	4	QF170C	6x48mm CROSS MEMBER (CLEAR)
13	8	HHI3M16C	DIN912-12-M3x16 SHCS (FRAME SPACERS)	33	4	QF325	3x6x28mm CANOPY STANDOFF
14	4	HHI3M35C	DIN912-12-M3x35 SHCS (BOOM SUPPORT)	34	2	QF361	20mm BOOM SUPPORT HALF (PLASTIC)
15	4	HHI3M3SS	M3x3 SET SCREW	35	1	QFE158	ANTI-ROTATION BASE
16	1	HHI4007	LANDING GEAR (BLK-BLUE)	36	1	QFE158A	ANTI-ROTATION UPRIGHT
17	2	HHI4007A	BLUE LANDING GEAR SKID	37	1	QFE163	RIGHT REAR FRAME
18	2	HHI4007B	LANDING GEAR STRUT (BLACK)	38	1	QFE164	LEFT REAR FRAME
19	4	HHI4007C	LANDING GEAR SKID END CAPS	39	2	QFE165	UPPER FRAME
20	20	HHIM11103	3MM BLUE FINISHING CAP (OPTIONAL)	40	1	QFE170	GYRO FRAME PLATE



201 S. 3rd. Street & 309 N.
Coopersburg, PA. 18036
Phone: (610) 282-4811
E-mail: hhi@fast.net

Drawn By: Kent Sharp

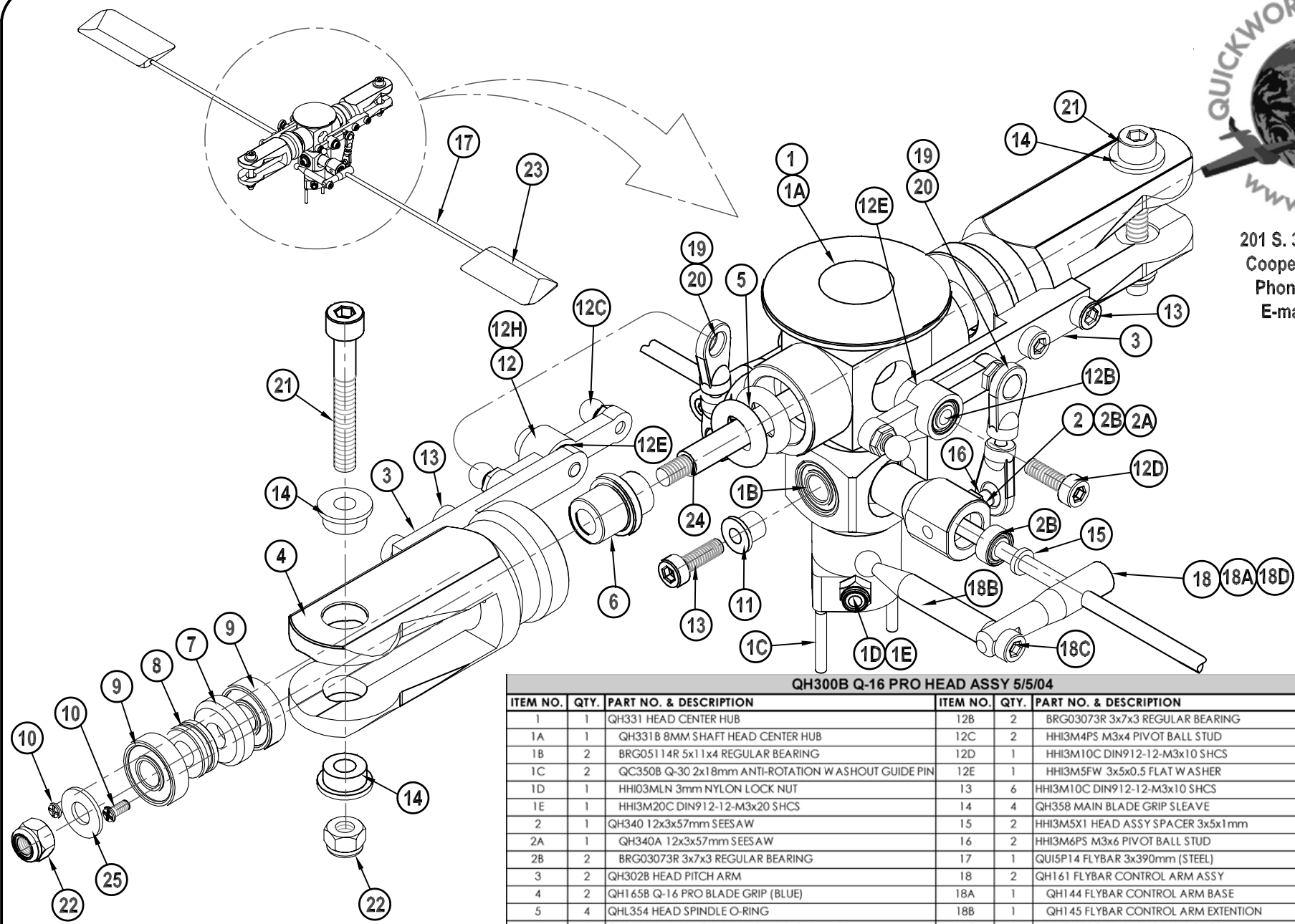


Q-16 SPORT HEAD BOM

ITEM NO.	QTY.	PART NO.	DESCRIPTION	ITEM NO.	QTY.	PART NO.	DESCRIPTION
1	2	QH161	FLYBAR CONTROL ARM ASSY	15	4	BRG08165R	8x16x5 REGULAR BEARING
2	1	QH144	FLYBAR CONTROL ARM BASE	16	2	QHL353	HEAD SPINDLE SPACER
3	1	QH145	FLYBAR CONTROL ARM EXTENTION	17	6	BRG03073R	3x7x3 REGULAR BEARING
4	1	HHI3M08C	DIN912-12-M3x8 SHCS	18	2	QHL306	PLASTIC BLADE GRIP
5	1	HHI4M04SS	M4x4 SET SCREW	19	2	BRG05114R	5x11x4 REGULAR BEARING
6	2	QH163	FLYBAR PADDLE BLACK POLY	20	2	HHI3M5FW	3x5x0.5 FLAT WASHER
7	4	QHL354	HEAD SPINDLE O-RING	21	1	HHI3M20C	DIN912-12-M3x20 SHCS
8	1	QUI5P14	FLYBAR 3x390mm (STEEL)	22	2	HHI3M30C	DIN912-12-M3x30 SHCS
9	2	HHI3M8PS	M3x8 PIVOT BALL STUD	23	2	HHI3M4PS	M3x4 PIVOT BALL STUD
10	4	HHI3M10C	DIN912-12-M3x10 SHCS	24	2	HHI4M08F	M4x8 FHCS
11	3	HHI03MLN	3mm NYLON LOCK NUT	25	2	QC150B	ANTI-ROTATION WASHOUT GUIDE PIN 2x21mm
12	1	QH331A	HEAD CENTER HUB	26	2	HHI3M5X1	HEAD ASSY SPACER 3x5x1mm
13	1	QH311	SPORT HEAD SPINDLE 8x82.5mm (STEEL)	27	2	QH152	HILLER ARM
14	1	QH340A	12x3x57mm SEESAW	28	2	QC556	DOUBLE-LINK (BLACK)



201 S. 3rd. Street & 309 N.
Coopersburg, PA. 18036
Phone: (610) 282-4811
E-mail: hhi@fast.net



QH300B Q-16 PRO HEAD ASSY 5/5/04

ITEM NO.	QTY.	PART NO. & DESCRIPTION	ITEM NO.	QTY.	PART NO. & DESCRIPTION
1	1	QH331 HEAD CENTER HUB	12B	2	BRG03073R 3x7x3 REGULAR BEARING
1A	1	QH331 B 8MM SHAFT HEAD CENTER HUB	12C	2	HHi3M4PS M3x4 PIVOT BALL STUD
1B	2	BRG05114R 5x11x4 REGULAR BEARING	12D	1	HHi3M10C DIN912-12-M3x10 SHCS
1C	2	QC350B Q-30 2x18mm ANTI-ROTATION WASHOUT GUIDE PIN	12E	1	HHi3M5FW 3x5x0.5 FLAT W ASHER
1D	1	HHi03MLN 3mm NYLON LOCK NUT	13	6	HHi3M10C DIN912-12-M3x10 SHCS
1E	1	HHi3M20C DIN912-12-M3x20 SHCS	14	4	QH358 MAIN BLADE GRIP SLEAVE
2	1	QH340 12x3x57mm SEESAW	15	2	HHi3M5X1 HEAD ASSY SPACER 3x5x1mm
2A	1	QH340A 12x3x57mm SEESAW	16	2	HHi3M6PS M3x6 PIVOT BALL STUD
2B	2	BRG03073R 3x7x3 REGULAR BEARING	17	1	QUI5P14 FLYBAR 3x390mm (STEEL)
3	2	QH302B HEAD PITCH ARM	18	2	QH161 FLYBAR CONTROL ARM ASSY
4	2	QH165B Q-16 PRO BLADE GRIP (BLUE)	18A	1	QH144 FLYBAR CONTROL ARM BASE
5	4	QHL354 HEAD SPINDLE O-RING	18B	1	QH145 FLYBAR CONTROL ARM EXTENSION
6	2	QH153 HEAD SPACER DAMPENER 5x8x4mm F	18C	1	HHi3M08C DIN912-12-M3x8 SHCS
7	2	QH159 THRUST BEARING SPACER 5x13x3.5mm	18D	1	HHi4M4SS M4x4 SET SCREW
8	2	BRG05104T 5x10x4 THRUST BEARING	19	4	HHi2020 2.3 SHORT BALL END (BLACK) PLASTIC
9	4	BRG05134R 5x13x4 REGULAR BEARING	20	2	HHiR23010 2.3x10mm LINKAGE ROD
10	4	HHi2M04P DIN912-12-M2x4 PHCS	21	2	HHi4M30C DIN912-12-M4x30 SHCS
11	2	QH351 CENTER-HUB COLLAR 3x5x5mm F	22	4	HHi04MLN 4mm NYLON LOCK NUT
12	2	QH352 HILLER ARM HEAD ASSY	23	2	QH163 FLYBAR PADDLE BLACK POLY
12A	1	QH304 HILLER ARM	24	1	QH160 HEAD SPINDLE 5x97mm (STEEL)
			25	2	HHi5M09FW 5mm x9 FLAT W ASHER

Drawn By: Kent Sharp