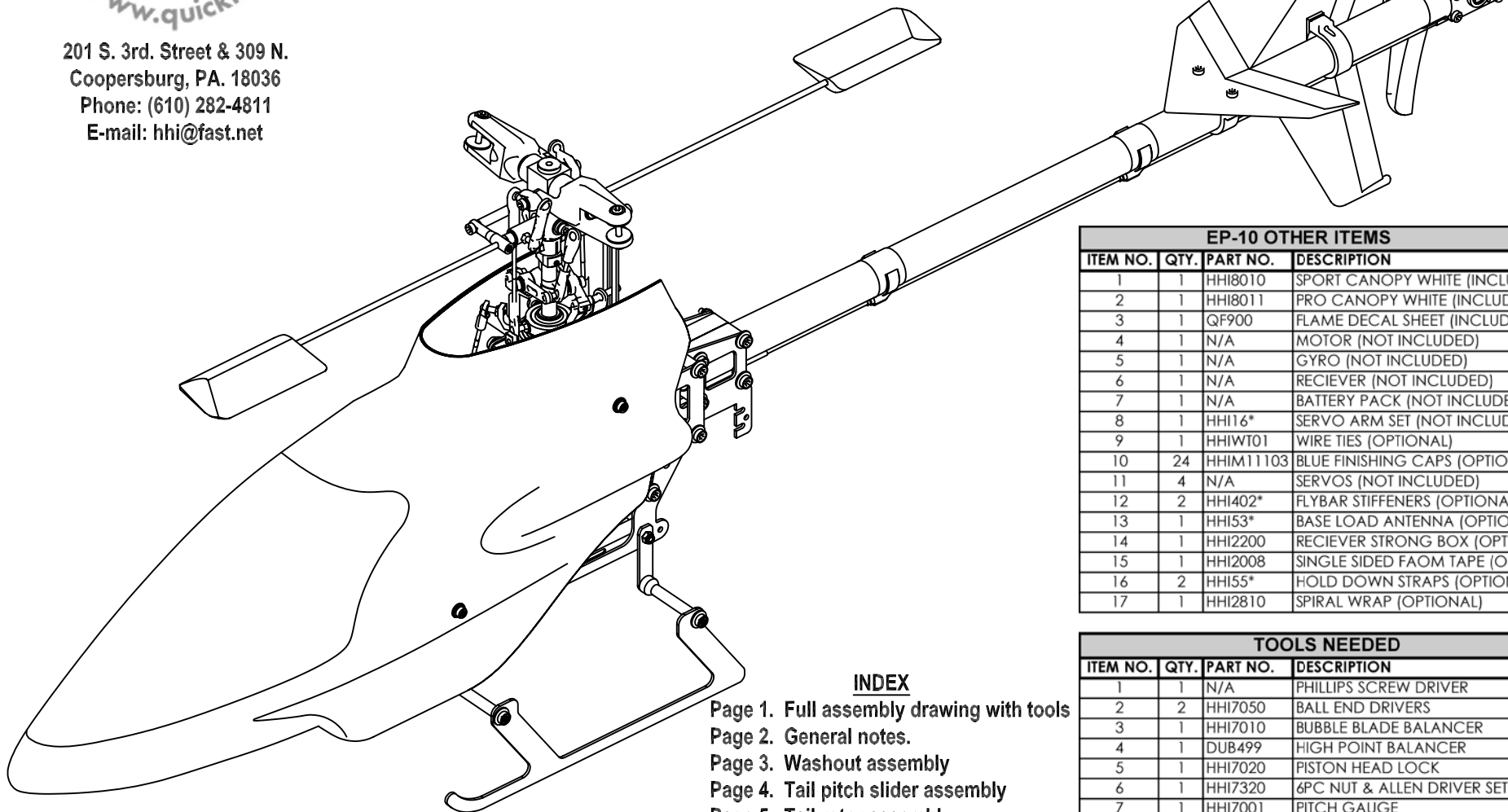




201 S. 3rd. Street & 309 N.
Coopersburg, PA. 18036
Phone: (610) 282-4811
E-mail: hhi@fast.net

Drawn By: Kent Sharp



QUICKIE-10 EP MODEL

INDEX

- Page 1. Full assembly drawing with tools
- Page 2. General notes.
- Page 3. Washout assembly
- Page 4. Tail pitch slider assembly
- Page 5. Tail rotor assembly
- Page 6. Swash plate assembly
- Page 7. Counter gear assembly
- Page 8. Tail boom assembly
- Page 9. Frame assembly
- Page 10. Sport head assembly
- Page 11. Pro head assembly

EP-10 OTHER ITEMS			
ITEM NO.	QTY.	PART NO.	DESCRIPTION
1	1	HHI8010	SPORT CANOPY WHITE (INCLUDED)
2	1	HHI8011	PRO CANOPY WHITE (INCLUDED)
3	1	QF900	FLAME DECAL SHEET (INCLUDED)
4	1	N/A	MOTOR (NOT INCLUDED)
5	1	N/A	GYRO (NOT INCLUDED)
6	1	N/A	RECIEVER (NOT INCLUDED)
7	1	N/A	BATTERY PACK (NOT INCLUDED)
8	1	HHI16*	SERVO ARM SET (NOT INCLUDED)
9	1	HHIWT01	WIRE TIES (OPTIONAL)
10	24	HHIM11103	BLUE FINISHING CAPS (OPTIONAL)
11	4	N/A	SERVOS (NOT INCLUDED)
12	2	HHI402*	FLYBAR STIFFENERS (OPTIONAL)
13	1	HHI53*	BASE LOAD ANTENNA (OPTIONAL)
14	1	HHI2200	RECIEVER STRONG BOX (OPTIONAL)
15	1	HHI2008	SINGLE SIDED FAOM TAPE (OPTIONAL)
16	2	HHI55*	HOLD DOWN STRAPS (OPTIONAL)
17	1	HHI2810	SPIRAL WRAP (OPTIONAL)

TOOLS NEEDED			
ITEM NO.	QTY.	PART NO.	DESCRIPTION
1	1	N/A	PHILLIPS SCREW DRIVER
2	2	HHI7050	BALL END DRIVERS
3	1	HHI7010	BUBBLE BLADE BALANCER
4	1	DUB499	HIGH POINT BALANCER
5	1	HHI7020	PISTON HEAD LOCK
6	1	HHI7320	6PC NUT & ALLEN DRIVER SET
7	1	HHI7001	PITCH GAUGE
8	1	HHI7000	COMPOSITE PADDLE GAUGES
9	1	HHI7040	UNIVERSAL FLYBAR LOCK
10	1	N/A	RULER
11	1	N/A	HOBBIE KNIFE
12	1	N/A	NEEDLE NOSE PLIERS
13	1	N/A	SCISSORS
14	1	GBG1	CA GLUE
15	1	PT40	LOCK-TITE



201 S. 3rd. Street & 309 N.
Coopersburg, PA. 18036
Phone: (610) 282-4811
E-mail: hhi@fast.net

Quick Pre-Assembly Information

Quick Worldwide & Hobbies & Helis International:

Quick of Japan and Hobbies & Helis International teamed up to make parts 6 years ago. In the beginning, our specialty was the manufacturing of various upgrade parts for many of the plastic helicopters on the market.

After four years of distributing numerous upgrades and crash parts for other helicopters, we decided to develop our own line of helicopters. That's when the notion of the Quick Learner was conceived. As the development of the kit began, initial designs were approved, proto-types were made and flown - all to ensure that the design was flawless. No minor details were over-looked. After countless hours of hard work and dedication, Quick-World-Wide is proud to release the first in a new standard in Helicopters - the Quick Learner.

Warning:

The radio-controlled model helicopter contained in this kit is not a toy. Rather, it is a sophisticated piece of equipment. This Product is not recommended for use by children, without adult supervision. Radio controlled models such as this, are capable of causing both property damage and/or bodily harm to both the operator/assembler and/or spectator if not properly assembled and operated. Hobbies & Helis assumes no liability for damage that could occur from the assembly and/or use/misuse of this product.

AMA:

We strongly encourage all prospective and current R/C aircraft pilots to join the Academy of Model Aeronautics. The AMA is a non-profit organization that provides services to model aircraft pilots. As an AMA member, you will receive a monthly magazine entitled Model Aviation, as well as a liability insurance plan to cover against possible accident or injury. All AMA charter aircraft clubs require individuals to hold a current AMA sporting license prior to the operation of their model.

Pre-Assembly Information:

Quick Helicopters are put together with care and quality topping our priority list. A recommendation when you are ready to begin building this model is that you examine the kit and understand the contents of the packages and read thoroughly before starting the assembly process. Purchase a parts box for all the nuts, bolts, and other small parts. We take great care to ensure all parts are in the box.

Radio Requirements

Radios:

Hobbies & Helis & its distributors carry various lines of helicopter radios. Any radio that supports EMS/CCPM Mixing will work fine. We recommend using an eight-channel or better radio, although a six channel radio is all that is required.

Servos:

(x3) Mid size servo's – Approx screw pinning dims 8x39mm.
For rudder use either (x1) Mid size or Standard size. Standard size screw pinning dims are 10x50mm

Introduction:

Please read through the entire manual before starting your construction of the Quickie. If there are any questions or concerns regarding the assembly of the helicopter you can call Hobbies & Helis International (610)-282-4811 or Email the any of the following techs.

Technical Support Personnel:

Jon – Jon@quickworldwide.com (all info.)
Kent – kent@quickworldwide.com (mechanical info.)
Bjorn – bjorn@quickworldwide.com (motors, servo's & electronics)
Irwin – hhi@fast.net (Head cheese)

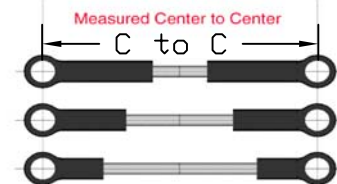
Threadlocker Warning (Very Important):

This is a general warning about the use of threadlocker and its importance. Threadlocker must be used anywhere that a metal fastener i.e. (M2, M3, M4 Cap Head Bolts, Set Screws etc.) are threaded into a metal part i.e. (Bearing Blocks, Cross-members, etc.). The failure to use threadlocker can result in parts falling a part and possible loss of control of the model, which can lead to a crash. Also, be sure to check your bolts' tightness after each flight. Many bolts, even with the use of threadlocker can come loose from vibration in the helicopter.

Linkage Rod Setup

In the following table the linkages will be measured center to center as per the picture. The table explains the amount of rods you need to make and which ball links to use on each end. This will get the helicopter close to finished setup, as always you will need to make some final adjustments to maximize the performance of your Helicopter

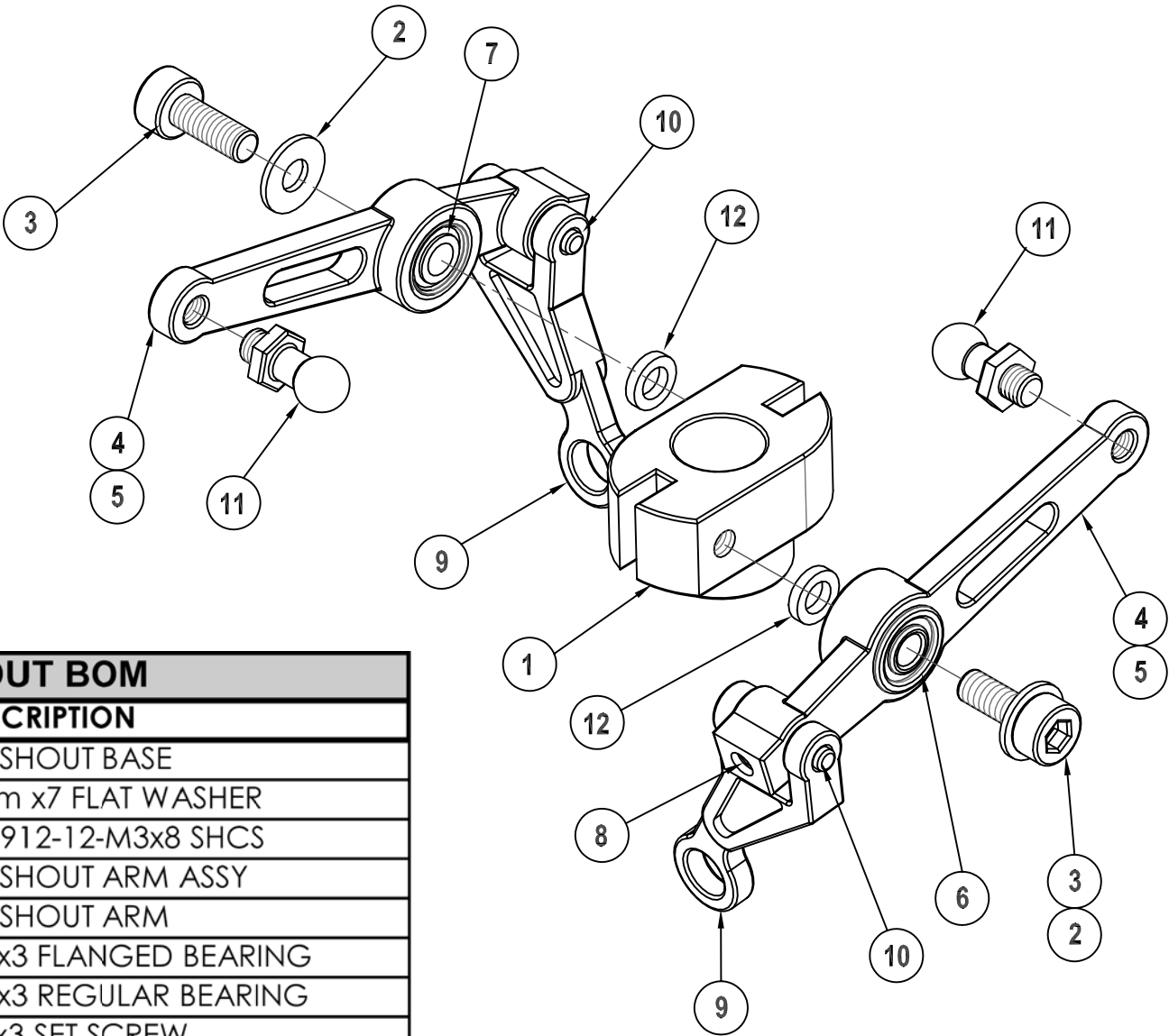
Replacement Part #:
Linkage Rod Set – QC150
All Linkages available individually just know the size



Flybar to Wash out Linkage approx
40mm C to C
Swash to Servo Linkage approx
50mm C to C
Swash to Hiller arm approx
87mm to C to C



201 S. 3rd. Street & 309 N.
 Coopersburg, PA. 18036
 Phone: (610) 282-4811
 E-mail: hhi@fast.net

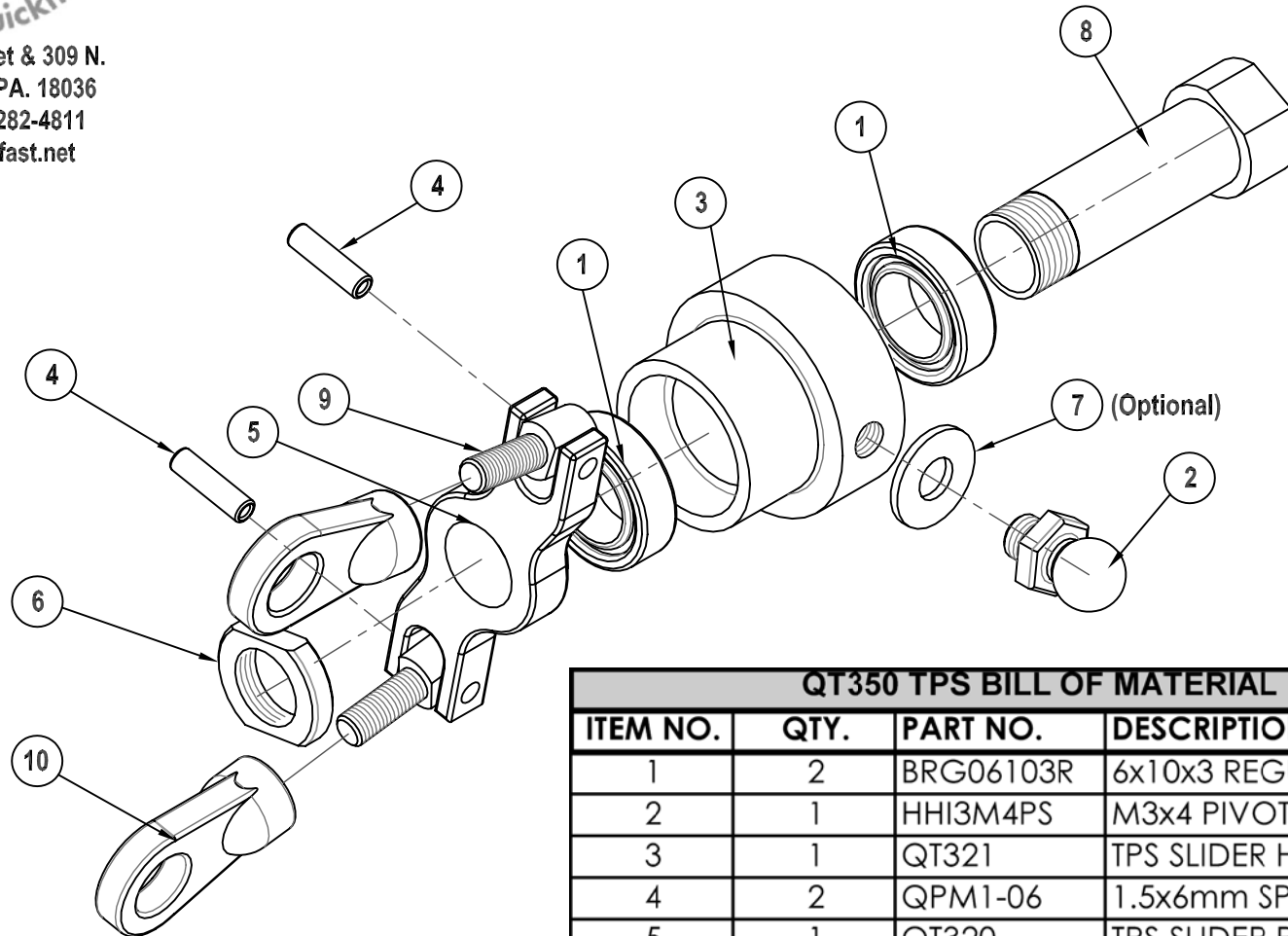


QC152 Q-10 WASHOUT BOM

ITEM NO.	QTY.	PART NO.	DESCRIPTION
1	1	QC104	WASHOUT BASE
2	2	HHI3M7FW	3mm x7 FLAT WASHER
3	2	HHI3M08C	DIN912-12-M3x8 SHCS
4	2	QC105	WASHOUT ARM ASSY
5	2	QC105A	WASHOUT ARM
6	2	BRG03073F	3x7x3 FLANGED BEARING
7	2	BRG03073R	3x7x3 REGULAR BEARING
8	2	HHI3M03SS	M3x3 SET SCREW
9	2	QC358	WASHOUT LINK
10	2	QC606	WASHOUT LINK PIN 2x12mm
11	2	HHI3M6PS	M3x6 PIVOT BALL STUD
12	2	HHI3M5X1	HEAD ASSY SPACER 3x5x1mm



201 S. 3rd. Street & 309 N.
 Coopersburg, PA. 18036
 Phone: (610) 282-4811
 E-mail: hhi@fast.net

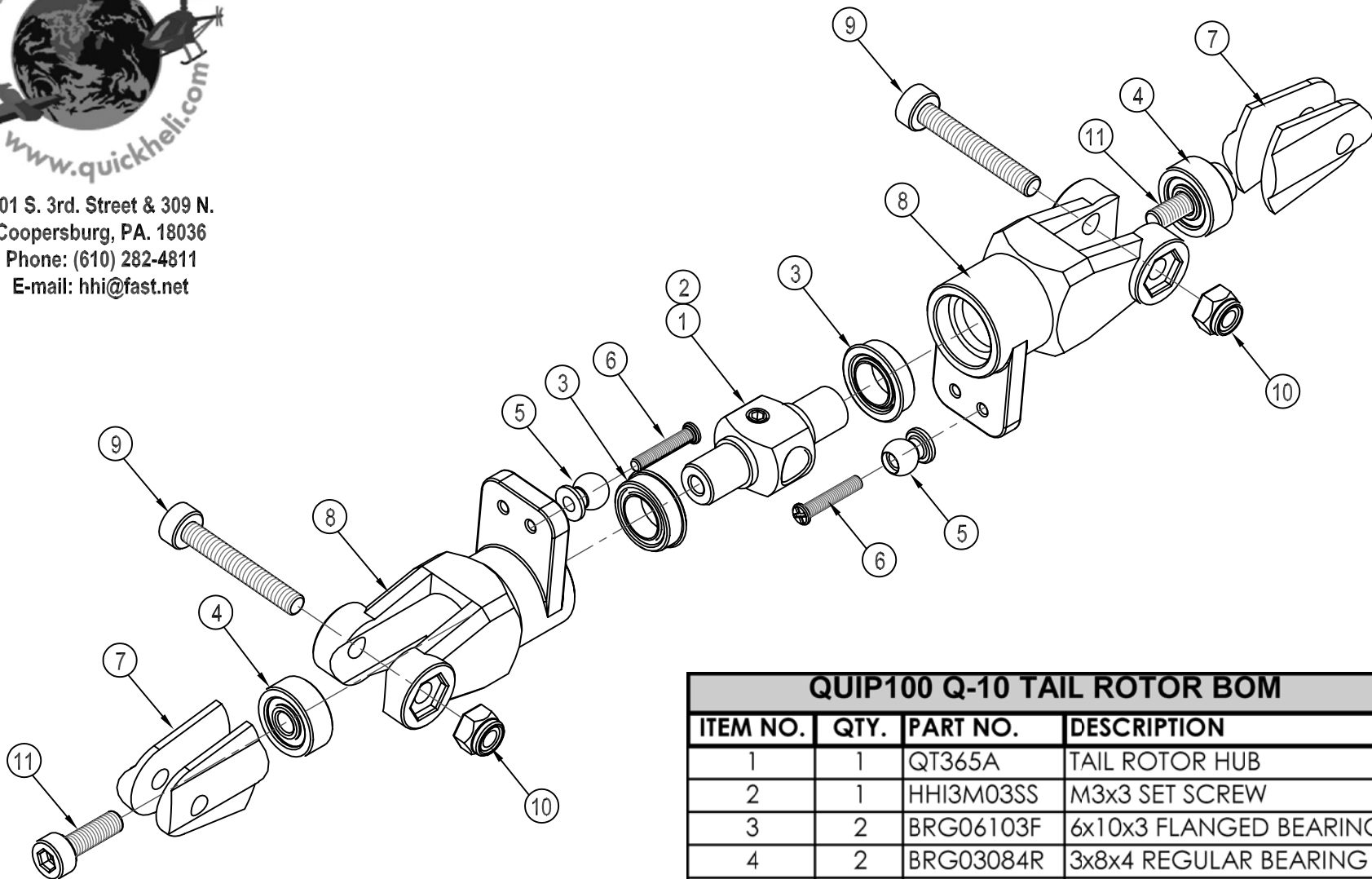


QT350 TPS BILL OF MATERIAL

ITEM NO.	QTY.	PART NO.	DESCRIPTION
1	2	BRG06103R	6x10x3 REGULAR BEARING
2	1	HHI3M4PS	M3x4 PIVOT BALL STUD
3	1	QT321	TPS SLIDER HUB
4	2	QPM1-06	1.5x6mm SPRING ROLL PIN
5	1	QT320	TPS SLIDER PITCH PLATE
6	1	QT323	TPS ALUM. 6mm THREADED NUT
7	1	HHI3M7FW	3mm x7 FLAT WASHER
8	1	QT322	TPS 6x20MM BRASS BUSHING SLEEVE
9	2	QT350A	TPS 2.3mm LINK PIN SCREW
10	2	HHI2020	2.3 SHORT BALL LINK (BLACK)



201 S. 3rd. Street & 309 N.
 Coopersburg, PA. 18036
 Phone: (610) 282-4811
 E-mail: hhi@fast.net



QUIP100 Q-10 TAIL ROTOR BOM

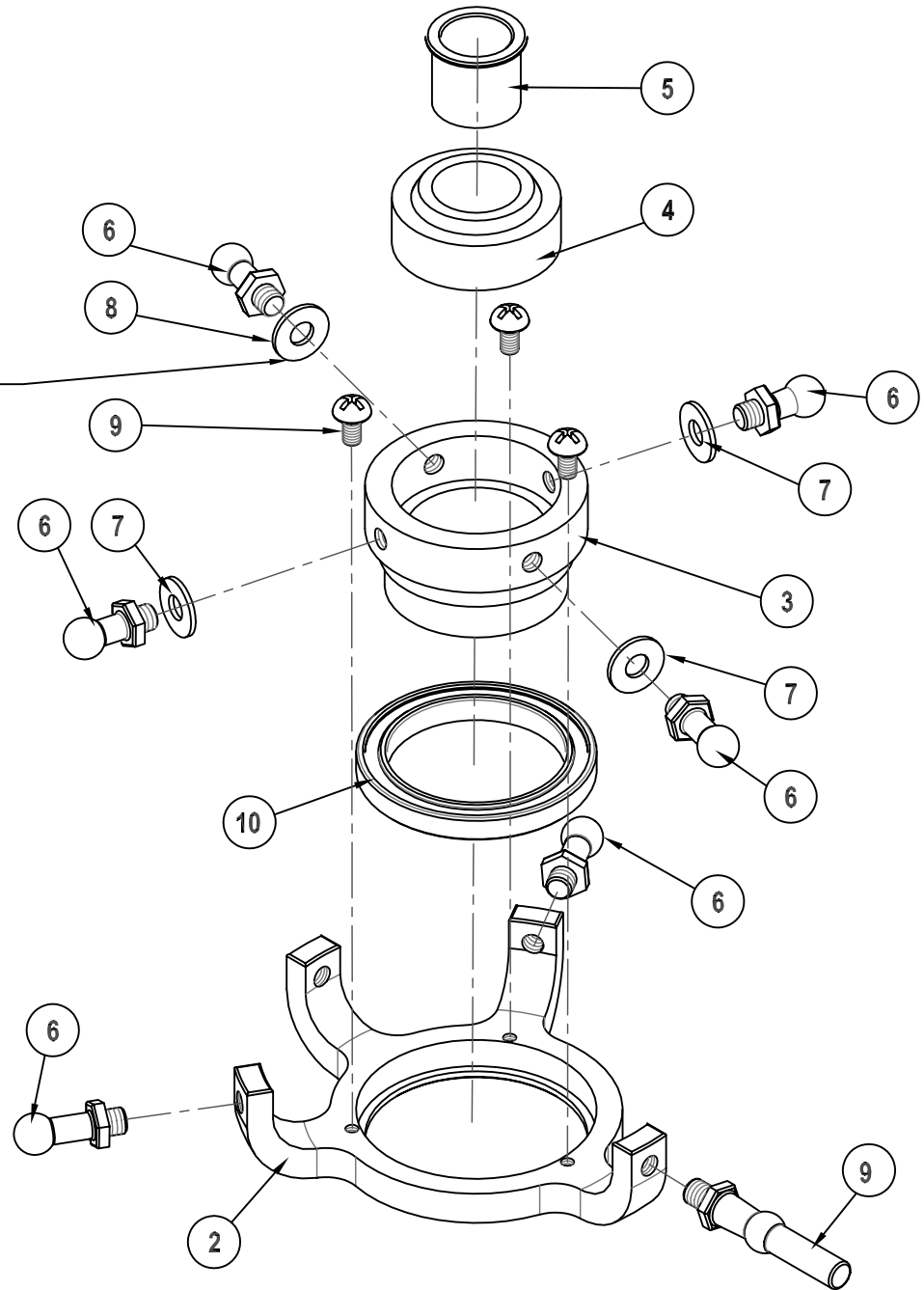
ITEM NO.	QTY.	PART NO.	DESCRIPTION
1	1	QT365A	TAIL ROTOR HUB
2	1	HHI3M03SS	M3x3 SET SCREW
3	2	BRG06103F	6x10x3 FLANGED BEARING
4	2	BRG03084R	3x8x4 REGULAR BEARING
5	2	HHI2M4PS	2mm DIA BORE x 4mm PIVOT BALL STUD
6	2	HHI2M10P	DIN912-12-M2x10 PHCS
7	4	QT365B	TAIL BLADE GRIP SPACER (PLASTIC)
8	2	QT365C	TAIL BLADE GRIP (PLASTIC)
9	2	HHI3M20C	DIN912-12-M3x20 SHCS
10	2	HHI03MLN	3mm NYLON LOCK NUT
11	2	HHI3M10C	DIN912-12-M3x10 SHCS



201 S. 3rd. Street & 309 N.
 Coopersburg, PA. 18036
 Phone: (610) 282-4811
 E-mail: hhi@fast.net

Drawn By: Kent Sharp

USE IF NECESSARY



QCE151 SWASH PLATE ASSY BOM			
ITEM NO.	QTY.	PART NO.	DESCRIPTION
2	1	QC121	SWASH LOWER RING ALUM CASING
3	1	QC120	SWASH UPPER RING CASING
4	1	BRG101909S	19x15x6mm SPHERICAL BEARING
5	1	QC322	BRASS SLEEVE 8x10mm FLANGED
6	6	HHI3M7PS	M3x7 PIVOT BALL STUD
7	4	HHI3M7FW	3mm x7 FLAT WASHER
8	3	HHI2M04B	DIN912-12-M2x4 BHCS
9	1	QCE001	ANTI-ROTATION PIN FOR EP
10	1	BRG20273R	20x27x3 REGULAR BEARING

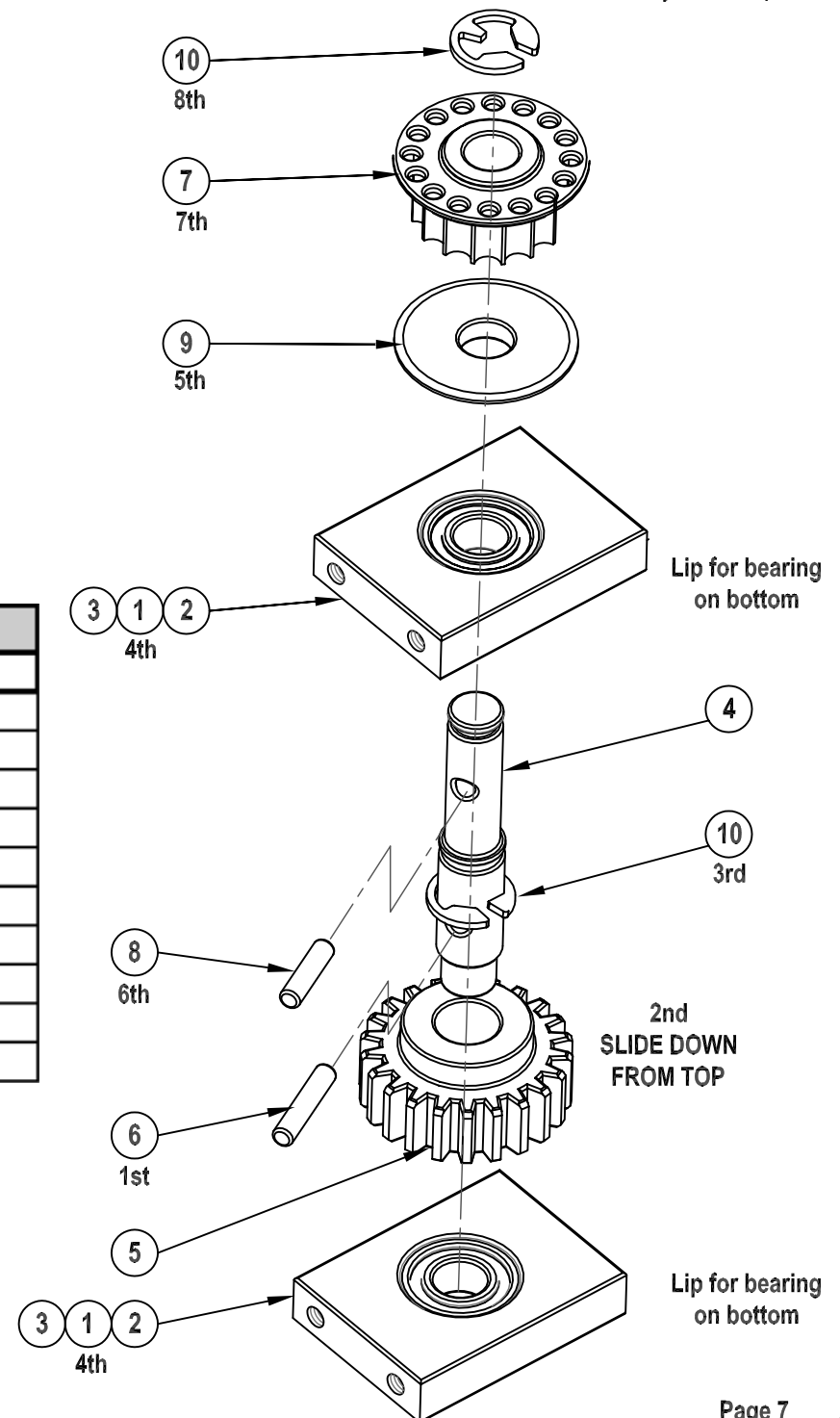


201 S. 3rd. Street & 309 N.
 Coopersburg, PA. 18036
 Phone: (610) 282-4811
 E-mail: hhi@fast.net

Drawn By: Kent Sharp

QD163 Q-10 COUNTER GEAR BOM

ITEM NO.	QTY.	PART NO.	DESCRIPTION
1	2	QD153	COUNTER GEAR BEARING BLOCK ASSY
2	2	QD153A	COUNTER GEAR BEARING BLOCK
3	2	BRG05114R	5x11x4 REGULAR BEARING
4	1	QD151A	COUNTER GEAR SHAFT
5	1	QD151B	COUNTER GEAR
6	1	QD151C	COUNTER GEAR LOCK PIN 2x10mm
7	1	QD164	COUNTER GEAR PULLEY
8	1	QD164A	COUNTER GEAR PULLEY LOCK PIN 2x8mm
9	1	QD165	COUNTER GEAR PULLEY SIDE PLATE
10	2	QPM4CLIP	4mm E-CLIP



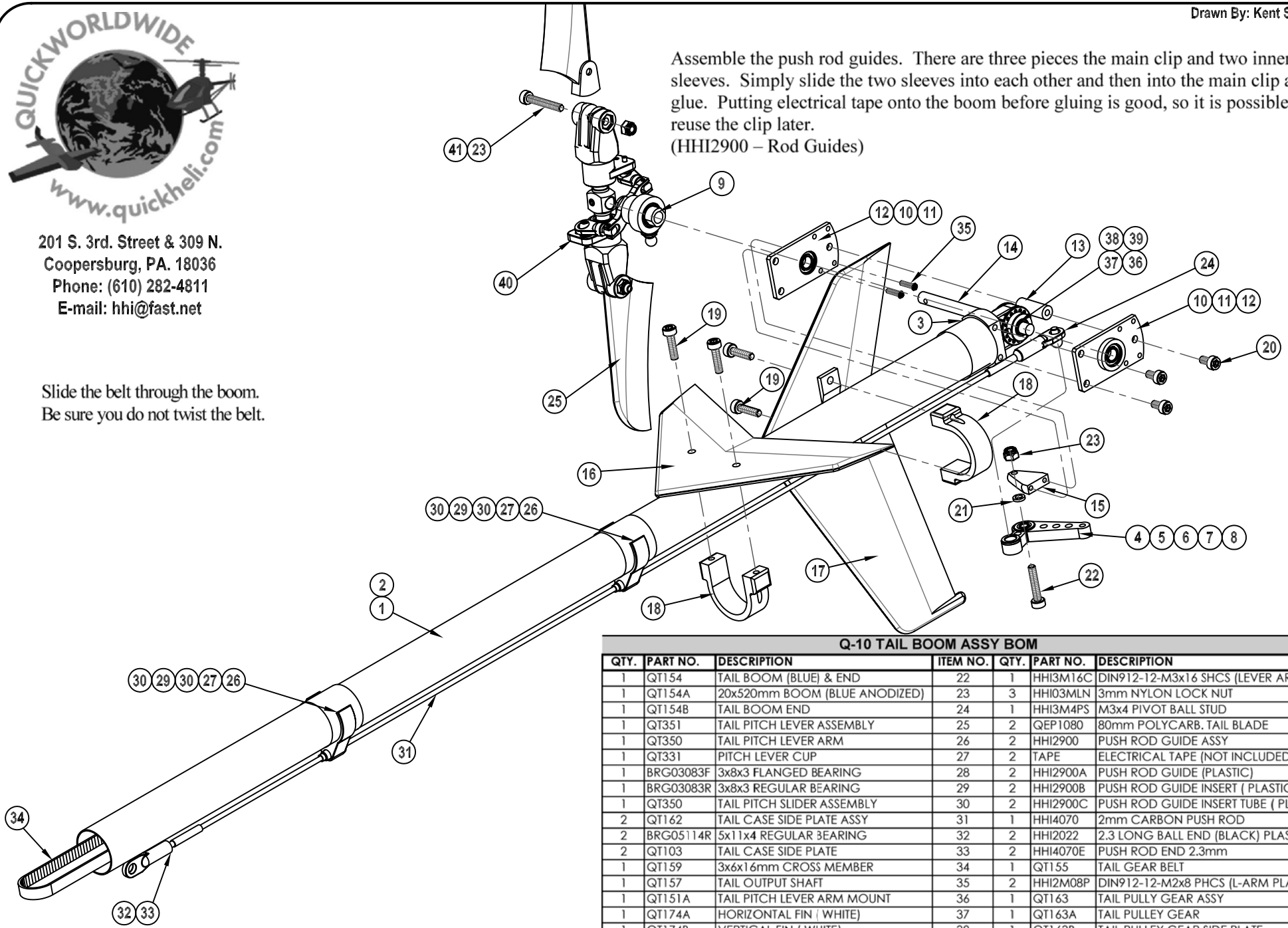


201 S. 3rd. Street & 309 N.
Coopersburg, PA. 18036
Phone: (610) 282-4811
E-mail: hhi@fast.net

Slide the belt through the boom.
Be sure you do not twist the belt.

Drawn By: Kent Sharp

Assemble the push rod guides. There are three pieces the main clip and two inner sleeves. Simply slide the two sleeves into each other and then into the main clip and glue. Putting electrical tape onto the boom before gluing is good, so it is possible to reuse the clip later.
(HHI2900 – Rod Guides)



Q-10 TAIL BOOM ASSY BOM

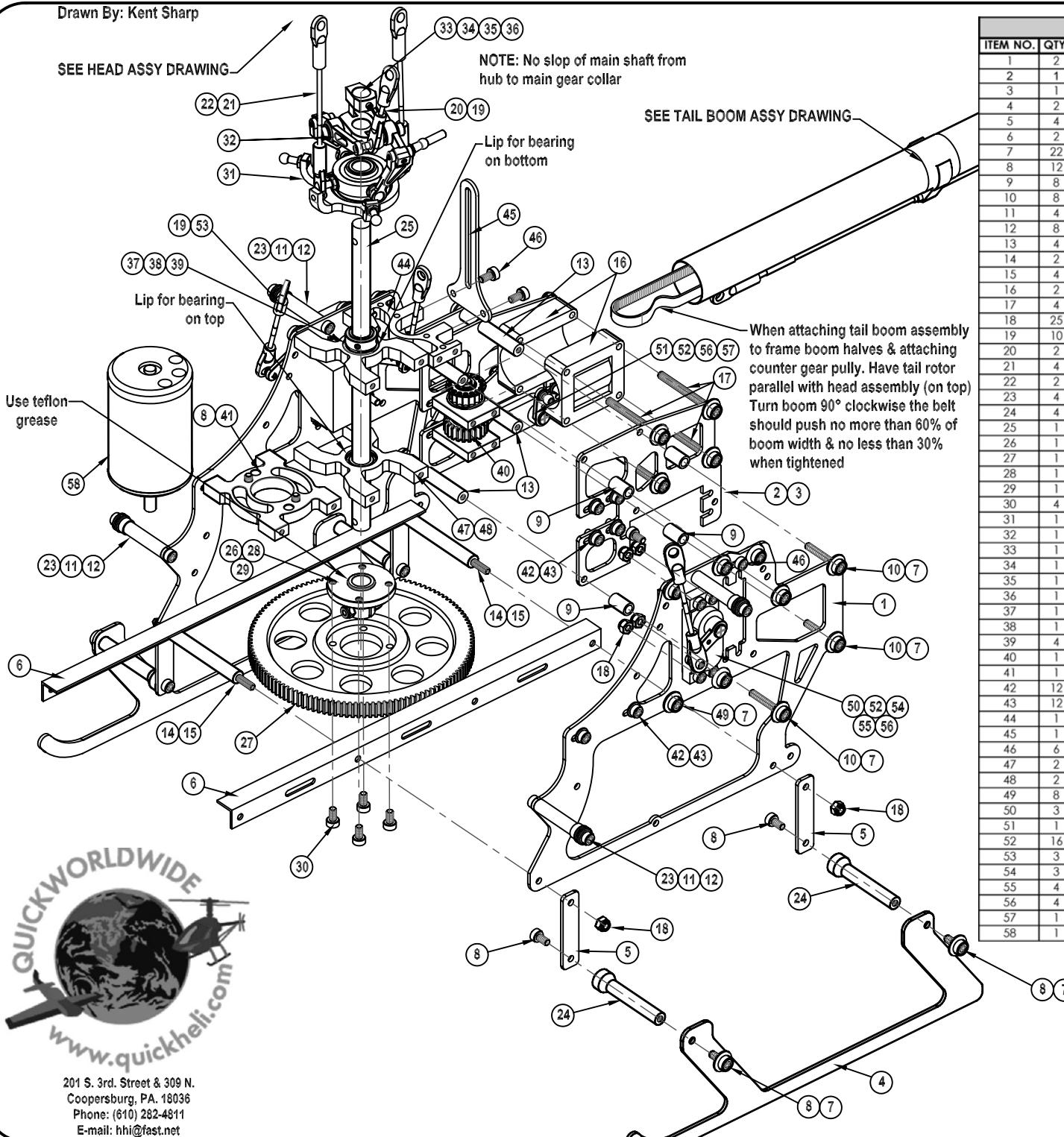
QTY.	PART NO.	DESCRIPTION	ITEM NO.	QTY.	PART NO.	DESCRIPTION
1	QT1 54	TAIL BOOM (BLUE) & END	22	1	HHI3M16C	DIN912-12-M3x16 SHCS (LEVER ARM)
1	QT1 54A	20x520mm BOOM (BLUE ANODIZED)	23	3	HHI03MLN	3mm NYLON LOCK NUT
1	QT1 54B	TAIL BOOM END	24	1	HHI3M4PS	M3x4 PIVOT BALL STUD
1	QT351	TAIL PITCH LEVER ASSEMBLY	25	2	QEP1080	80mm POLYCARB. TAIL BLADE
1	QT350	TAIL PITCH LEVER ARM	26	2	HHI2900	PUSH ROD GUIDE ASSY
1	QT331	PITCH LEVER CUP	27	2	TAPE	ELECTRICAL TAPE (NOT INCLUDED)
1	BRG03083F	3x8x3 FLANGED BEARING	28	2	HHI2900A	PUSH ROD GUIDE (PLASTIC)
1	BRG03083R	3x8x3 REGULAR BEARING	29	2	HHI2900B	PUSH ROD GUIDE INSERT (PLASTIC)
1	QT350	TAIL PITCH SLIDER ASSEMBLY	30	2	HHI2900C	PUSH ROD GUIDE INSERT TUBE (PLASTIC)
2	QT1 62	TAIL CASE SIDE PLATE ASSY	31	1	HHI4070	2mm CARBON PUSH ROD
2	BRG05114R	5x11x4 REGULAR BEARING	32	2	HHI2022	2.3 LONG BALL END (BLACK) PLASTIC
2	QT103	TAIL CASE SIDE PLATE	33	2	HHI4070E	PUSH ROD END 2.3mm
1	QT159	3x6x16mm CROSS MEMBER	34	1	QT155	TAIL GEAR BELT
1	QT1 57	TAIL OUTPUT SHAFT	35	2	HHI2M08P	DIN912-12-M2x8 PHCS (L-ARM PLATE)
1	QT151A	TAIL PITCH LEVER ARM MOUNT	36	1	QT163	TAIL PULLY GEAR ASSY
1	QT174A	HORIZONTAL FIN (WHITE)	37	1	QT163A	TAIL PULLY GEAR
1	QT174B	VERTICAL FIN (WHITE)	38	1	QT163B	TAIL PULLY GEAR SIDE PLATE
2	QT1 601	FINMOUNT C-CLAMP	39	1	HHI3M03SS	M3x3 SET SCREW
4	HHI3M12C	DIN912-12-M3x12 SHCS (FINS)	40	1	QUIP100	TAIL ROTOR HUB ASSY
6	HHI3M06C	DIN912-12-M3x6 SHCS (SIDE PLATE)	41	2	HHI3M20C	DIN912-12-M3x20 SHCS
1	HHI3M5X1	HEAD ASSY SPACER 3x5x1mm				

Drawn By: Kent Sharp

SEE HEAD ASSY DRAWING

NOTE: No slop of main shaft from hub to main gear collar

SEE TAIL BOOM ASSY DRAWING



EP-10 BOM

ITEM NO.	QTY.	PART NO.	DESCRIPTION
1	2	QFE103	UPPER FRAME
2	1	QFE105	LEFT REAR FRAME
3	1	QFE104	RIGHT REAR FRAME
4	2	QFE101	LANDING GEAR
5	4	QFE107	LANDING GEAR STANDOFF
6	2	QFE155	FRAME RAILS 10x10x212mm ALUM. ANGLE
7	22	HHIM11103	3MM BLUE FINISHING CAP (OPTIONAL)
8	12	HHI3M08C	DIN912-12-M3x8 SHCS
9	8	HHI510	3x6x10MM SPACER
10	8	HHI3M20C	DIN912-12-M3x20 SHCS (SPACERS)
11	4	QF325	3x6x28mm CANOPY STANDOFF
12	8	HHI3M06C	DIN912-12-M3x6 SHCS
13	4	QF110	3x6x24mm CROSSMEMBER
14	2	QFE146	3x6x46mm CROSS MEMBER
15	4	HHI3M20SS	M3x20 SET SCREW
16	2	QT161	20mm BOOM SUPPORT HALF (PLASTIC)
17	4	HHI3M35C	DIN912-12-M3x35 SHCS
18	25	HHI03MLN	3mm NYLON LOCK NUT
19	10	HHI2021	2.3 MEDIUM BALL END (BLACK) PLASTIC
20	2	HHIR23020	2.3x20mm LINKAGE ROD
21	4	HHI2022	2.3 LONG BALL END (BLACK) PLASTIC
22	2	HHIR23050	2.3x50mm LINKAGE ROD
23	4	HHI2802	RUBBER CANOPY GROMMET
24	4	QF340	3x6x40mm CROSS MEMBER
25	1	QD156	MAIN SHAFT 8x162mm
26	1	QD154	MAIN GEAR HUB
27	1	QD155	MAIN GEAR
28	1	HHI3M16C	DIN912-12-M3x16 SHCS
29	1	HHI03MLN	3mm NYLON LOCK NUT (HUB)
30	4	HHI3M06C	DIN912-12-M3x6 SHCS (HUB)
31	1	QCE151	SWASH PLATE ASSEMBLY
32	1	QC152	WASHOUT UNIT ASSY
33	1	QC150	ANTI-ROTATION WASHOUT BASE ASSY
34	1	QC150A	ANTI-ROTATION WASHOUT BASE
35	1	QC150B	ANTI-ROTATION WASHOUT GUIDE PIN 2x21mm
36	1	HHI3M5SS	M3x5 SET SCREW
37	1	QD157	MAIN GEAR SHAFT COLLAR ASSY
38	1	QD157A	MAIN GEAR SHAFT COLLAR 8x14x7mm
39	4	HHI3M03SS	M3x3 SET SCREW
40	1	QD163	COUNTER GEAR BEARING BLOCK ASSY
41	1	QDE168	MOTOR MOUNT
42	12	HHI2730	3MM LOC-WASHER (CG BRG BLOCK & MOTOR MOUNT)
43	12	HHI3M06C	DIN912-12-M3x6 SHCS (CG BRG BLOCK & MOTOR MOUNT)
44	1	QFE158	ANTI-ROTATION BASE
45	1	QFE158A	ANTI-ROTATION UPRIGHT
46	6	HHI3M06C	DIN912-12-M3x6 SHCS (ANTI-RO)
47	2	QFE159A	MAIN SHAFT BEARING BLOCK
48	2	BRC08165R	8x16x5 REGULAR BEARING
49	8	HHI3M06C	DIN912-12-M3x6 SHCS (MS BRG BLOCK)
50	3	SERVO	MID-SIZE SERVC (NOT INCLUDED)
51	1	SERVO	STANDARD-SIZE SERVO (NOT INCLUDED)
52	16	HHI3M14C	DIN912-12-M3x14 SHCS (SERVO'S)
53	3	HHIR23035	2.3x35mm LINKAGE ROD
54	3	HHI1011B	SERVO ARM (BLUE ANODIZED)(NOT INCLUDED)
55	4	HHI2M4PS	2x4mm PIVOT BALL STUD FOR SERVO ARM (NOT INCLUDED)
56	4	HHI2M08P	DIN912-12-M2x8 PHCS FOR SERVO ARM (NOT INCLUDED)
57	1	HHI1031B	SHORT SERVO ARM (NOT INCLUDED)
58	1	AVE36382	AVEOX MOTOR (NOT INCLUDED)

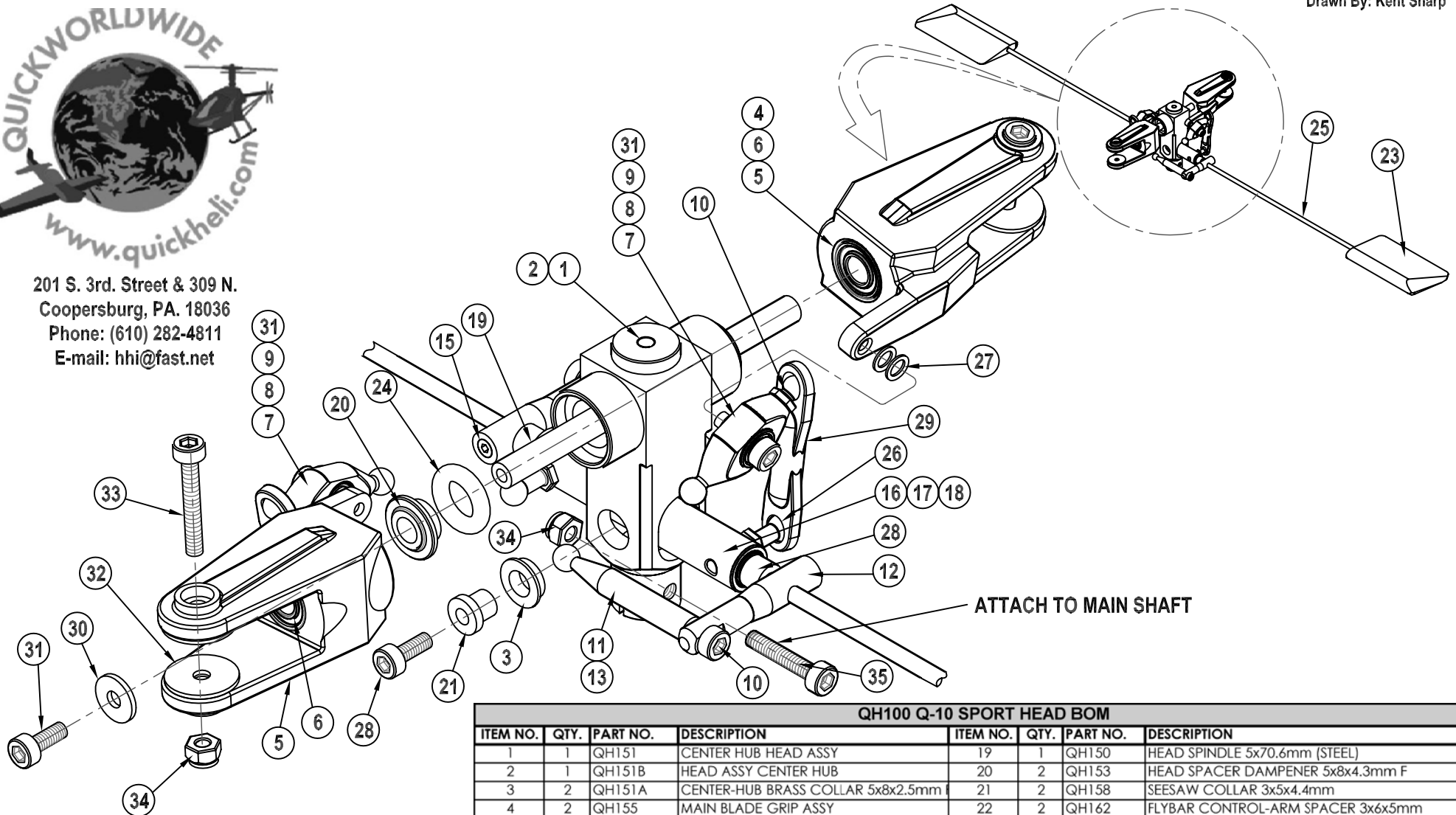


201 S. 3rd. Street & 309 N.
Coopersburg, PA. 18036
Phone: (610) 282-4811
E-mail: hhi@fast.net



201 S. 3rd. Street & 309 N.
Coopersburg, PA. 18036
Phone: (610) 282-4811
E-mail: hhi@fast.net

Drawn By: Kent Sharp

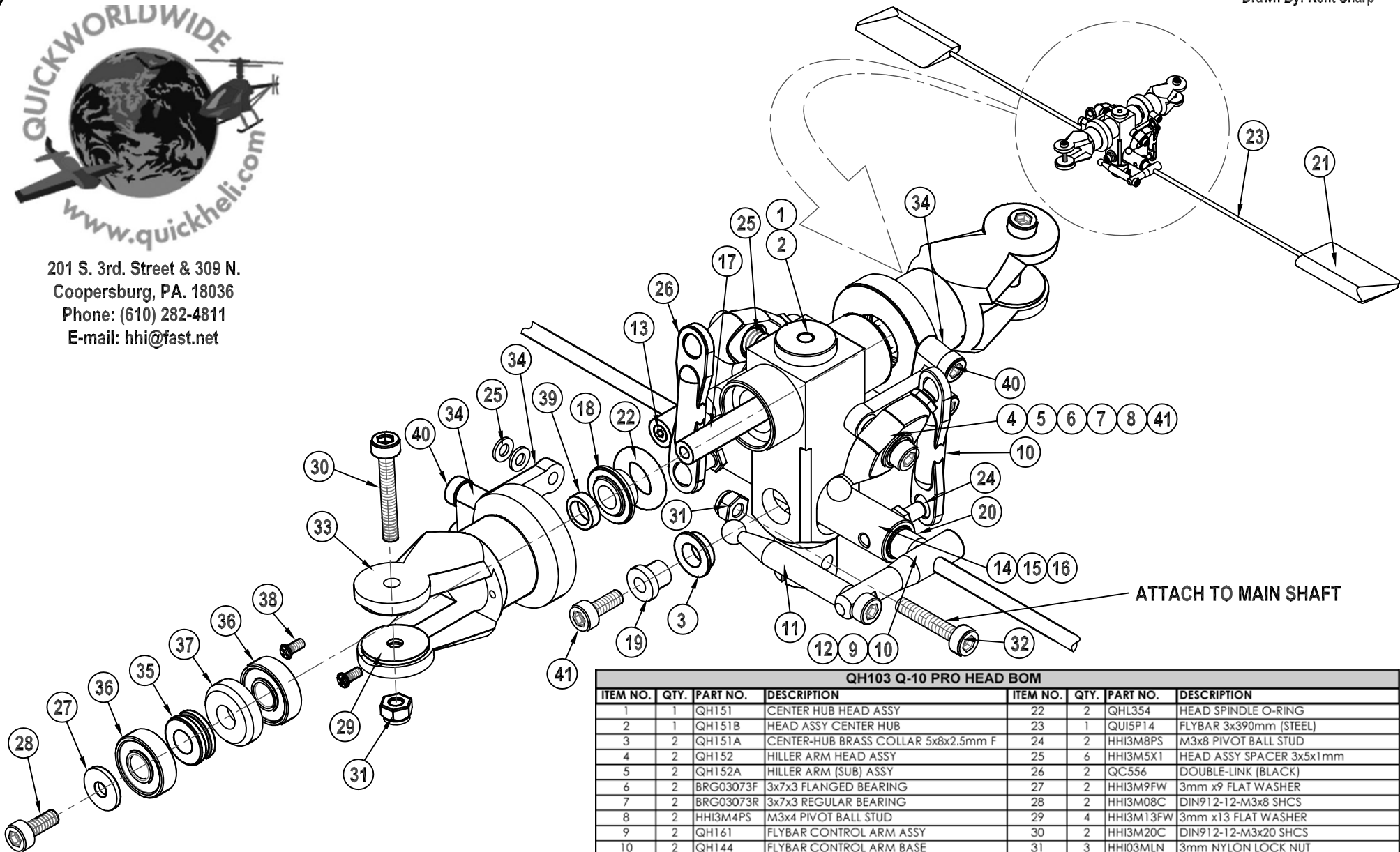


QH100 Q-10 SPORT HEAD BOM

ITEM NO.	QTY.	PART NO.	DESCRIPTION	ITEM NO.	QTY.	PART NO.	DESCRIPTION
1	1	QH151	CENTER HUB HEAD ASSY	19	1	QH150	HEAD SPINDLE 5x70.6mm (STEEL)
2	1	QH151B	HEAD ASSY CENTER HUB	20	2	QH153	HEAD SPACER DAMPENER 5x8x4.3mm F
3	2	QH151A	CENTER-HUB BRASS COLLAR 5x8x2.5mm	21	2	QH158	SEESAW COLLAR 3x5x4.4mm
4	2	QH155	MAIN BLADE GRIP ASSY	22	2	QH162	FLYBAR CONTROL-ARM SPACER 3x6x5mm
5	2	QH156	MAIN BLADE GRIP (PLASTIC)	23	2	QH163	FLYBAR PADDLE BLACK POLY
6	4	BRG05114R	5x11x4 REGULAR BEARING	24	2	QHL354	HEAD SPINDLE O-RING
7	2	QH152	HILLER ARM (SUB) ASSY	25	1	QUI5P14	FLYBAR 3x390mm (STEEL)
8	2	BRG03073F	3x7x3 FLANGED BEARING	26	2	HHI3M8PS	M3x8 PIVOT BALL STUD
9	2	BRG03073R	3x7x3 REGULAR BEARING	27	2	HHI3M5X1	HEAD ASSY SPACER 3x5x1mm
10	2	HHI3M4PS	M3x4 PIVOT BALL STUD	28	2	HHI3M10C	DIN912-12-M3x10 SHCS
11	2	QH161	FLYBAR CONTROL ARM ASSY	29	2	QC556	DOUBLE-LINK (BLACK)
12	2	QH144	FLYBAR CONTROL ARM BASE	30	2	HHI3M9FW	3mm x9 FLAT WASHER
13	2	QH145	FLYBAR CONTROL ARM EXTENTION	31	2	HHI3M08C	DIN912-12-M3x8 SHCS
14	2	HHI3M08C	DIN912-12-M3x8 SHCS	32	4	HHI3M13FW	3mm x13 FLAT WASHER
15	2	HHI4M04SS	M4x4 SET SCREW	33	2	HHI3M20C	DIN912-12-M3x20 SHCS
16	2	QH157	SEESAW ASSEMBLY	34	3	HHI03MLN	3mm NYLON LOCK NUT
17	2	BRG03073R	3x7x3 REGULAR BEARING	35	1	HHI3M16C	DIN912-12-M3x16 SHCS
18	1	QH105	SEESAW 9x50mm (ALUM)				



201 S. 3rd. Street & 309 N.
Coopersburg, PA. 18036
Phone: (610) 282-4811
E-mail: hhi@fast.net



QH103 Q-10 PRO HEAD BOM

ITEM NO.	QTY.	PART NO.	DESCRIPTION	ITEM NO.	QTY.	PART NO.	DESCRIPTION
1	1	QH151	CENTER HUB HEAD ASSY	22	2	QHL354	HEAD SPINDLE O-RING
2	1	QH151B	HEAD ASSY CENTER HUB	23	1	QUI5P14	FLYBAR 3x390mm (STEEL)
3	2	QH151A	CENTER-HUB BRASS COLLAR 5x8x2.5mm F	24	2	HHI3M8PS	M3x8 PIVOT BALL STUD
4	2	QH152	HILLER ARM HEAD ASSY	25	6	HHI3M5X1	HEAD ASSY SPACER 3x5x1 mm
5	2	QH152A	HILLER ARM (SUB) ASSY	26	2	QC556	DOUBLE-LINK (BLACK)
6	2	BRG03073F	3x7x3 FLANGED BEARING	27	2	HHI3M9FW	3mm x9 FLAT WASHER
7	2	BRG03073R	3x7x3 REGULAR BEARING	28	2	HHI3M08C	DIN912-12-M3x8 SHCS
8	2	HHI3M4PS	M3x4 PIVOT BALL STUD	29	4	HHI3M13FW	3mm x13 FLAT WASHER
9	2	QH161	FLYBAR CONTROL ARM ASSY	30	2	HHI3M20C	DIN912-12-M3x20 SHCS
10	2	QH144	FLYBAR CONTROL ARM BASE	31	3	HHI03MLN	3mm NYLON LOCK NUT
11	2	QH145	FLYBAR CONTROL ARM EXTENSION	32	1	HHI3M16C	DIN912-12-M3x16 SHCS
12	2	HHI3M08C	DIN912-12-M3x8 SHCS	33	2	QH156A	MAIN BLADE GRIP (ALUM)
13	2	HHI4M04SS	M4x4 SET SCREW	34	2	QH102	HEAD PITCH ARM
14	1	QH157	SEESAW ASSEMBLY	35	2	BRG05104T	5x10x4 THRUST BEARING
15	2	BRG03073R	3x7x3 REGULAR BEARING	36	4	BRG05134R	5x13x4 REGULAR BEARING
16	1	QH105	SEESAW 9x50mm (ALUM)	37	2	QH159	THRUST BEARING SPACER 5x13x3.5mm
17	1	QH150	HEAD SPINDLE 5x70.6mm (STEEL)	38	4	HHI2M04P	DIN912-12-M2x4 PHCS
18	2	QH153	HEAD SPACER DAMPENER 5x8x4.3mm F	39	2	QT312	HEAD SPACER 5x7x2mm
19	2	QH158	SEESAW COLLAR 3x5x4.4mm	40	4	HHI3M08C	DIN912-12-M3x8 SHCS
20	2	QH162	FLYBAR CONTROL-ARM SPACER 3x6x5mm	41	2	HHI3M12C	DIN912-12-M3x12 SHCS
21	2	QH163	FLYBAR PADDLE BLACK POLY				