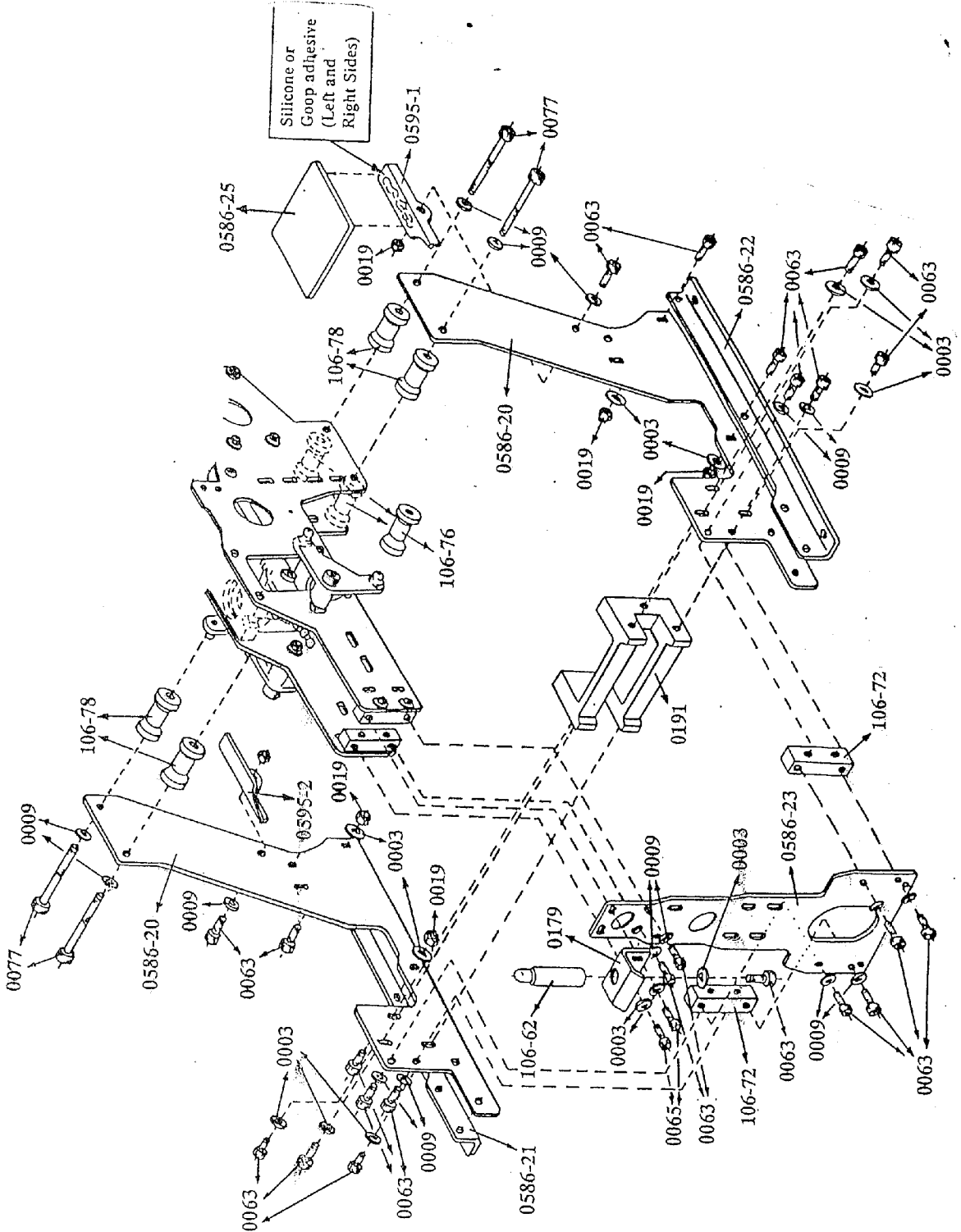


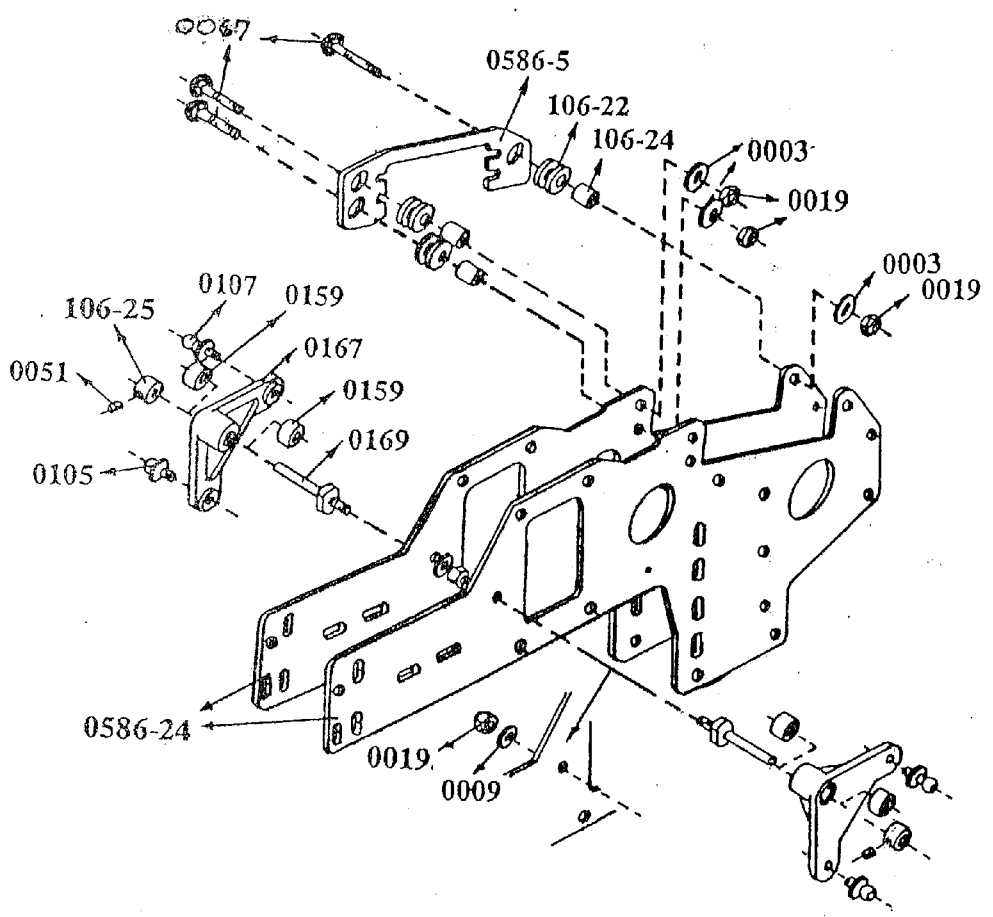
CARBON GRAPHITE FRAME SET**Parts Inventory List:**

20	#0003	3mm Flat Washers (Large)
46	#0009	3mm Flat Washers (Small)
15	#0019	3mm Hex Locknut
30	#0063	M3x10 Socket Head Screws
3	#0067	m3x14 Socket Head Bolts
4	#0077	M3x30 Socket Head Screws
2	#0575-1	Servo Blocks
1	#0586-5	Graphite Elevator Plate (Fits .30 thru .60)
2	#0586-20	Graphite Lower Main Frame Sides
1	#0586-21	Aluminum Lower Frame Channel (Right)
1	#0586-22	Aluminum Lower Frame Channel (Left)
1	#0586-23	Graphite Vertical Front Plate
2	#0586-24	Top Main Frame Sides (Graphite)
1	#0586-25	Graphite Gyro Plate
1	#0595-1	Left Rear Gyro Mounting Plate
1	#0595-2	Right Rear Gyro Mounting Plate
5	#106-22	Rubber Grommet Isolators
3	#106-24	Dampening Sleeves
2	#106-66	Graphite Landing Gear Brace
4	#106-72	Frame Plate Corner Blocks
2	#106-76	"Threaded" Spacers
4	#106-78	"Un-Threaded" Spacers

.60 Size Assembly Notes:

- 1) Disassemble your existing frame set.
- 2) Assemble entire frame set before re- assembling original components. Align entire frame set on a flat surface.
- 3) Loctite all screws (not using #0019 locknuts).
- 4) Install the three rubber grommets (#106-22) into the graphite elevator plate (#0586-24). Squeeze grommets together & push in as far as possible. Use a small straight screwdriver and work around the grommets, pushing one side all the way thru. Center the three dampening sleeves (#106-24) in the grommets.
- 5) Install the elevator servo plate by bolting the elevator plate to the inside of the right upper frame plate (#0827-5) using the following hardware: 3) #0067 M3x14 socket bolts, 3) #0003 M3 washers (large), 3) #0019 locknuts.
- 6) Reinstall all of the original equipment: bellcranks, mainshaft components, tail drive, etc. Note that many of the bolts which are going into graphite will use M3 washers under the bolt heads.
- 7) Mount the servo from the right side in the following order using four of the servo screws provided with your radio equipment and two (#0575-1) servo doublers on the inside. Snugly tighten, but do not crush the servo rubber grommets.
- 8) Route all wires as neatly as possible, making sure that the wires do not rub any graphite edges.
- 9) Reinstall the upper canopy latch (#0179) noting that it may need the two holes widened outwards 1.5mm.





STD. SERVO SCREWS

