

**X-CELL**

# **Spectra-G**

3-D

Kit Drawings

#125-100B - Tempest Head



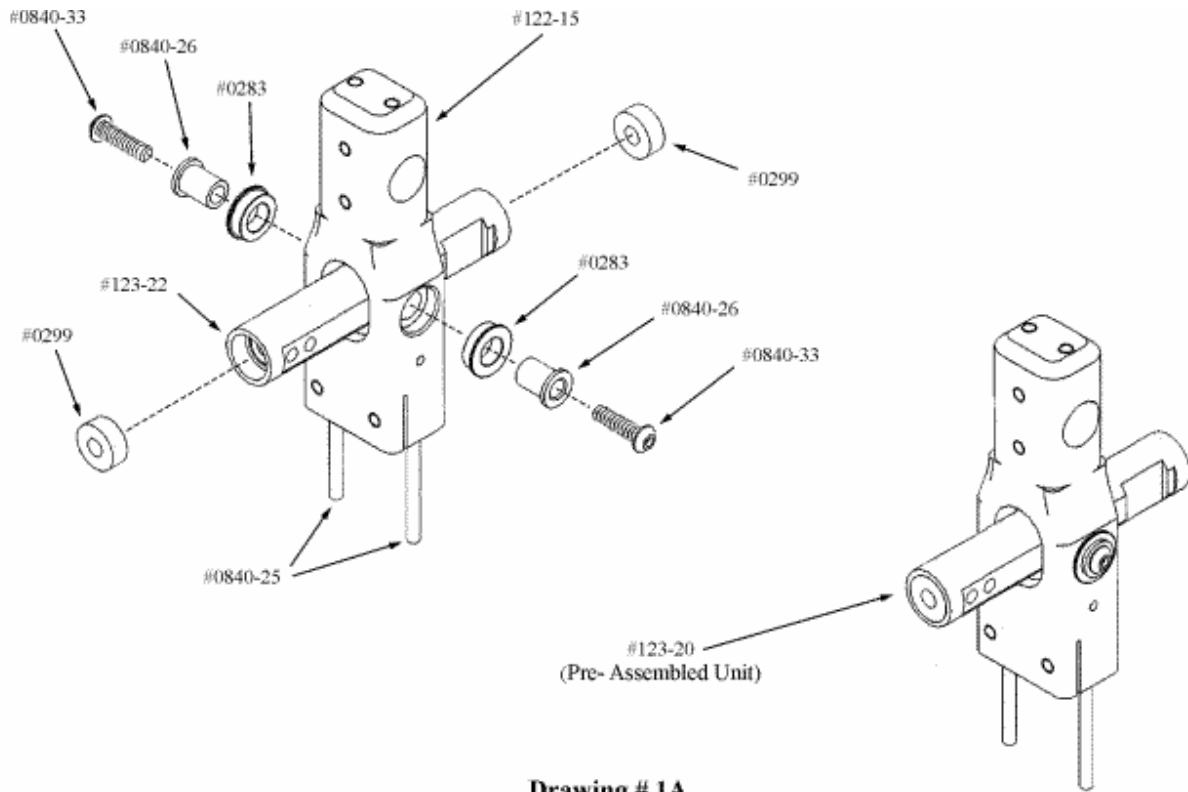
**miniature aircraft usa**

31713 Long Acres Drive  
Sorrento, FL 32776

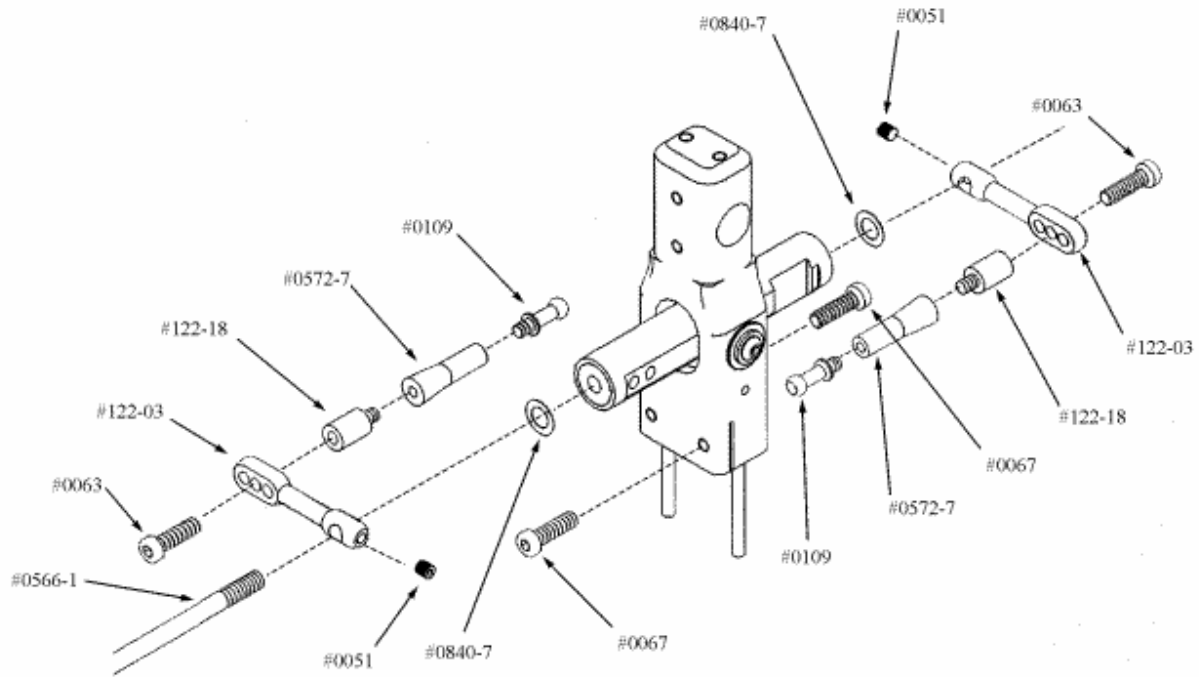
Phone (352)-383-3201 FAX (352)-383-3204

Website: [www.miniatureaircraftusa.com](http://www.miniatureaircraftusa.com)

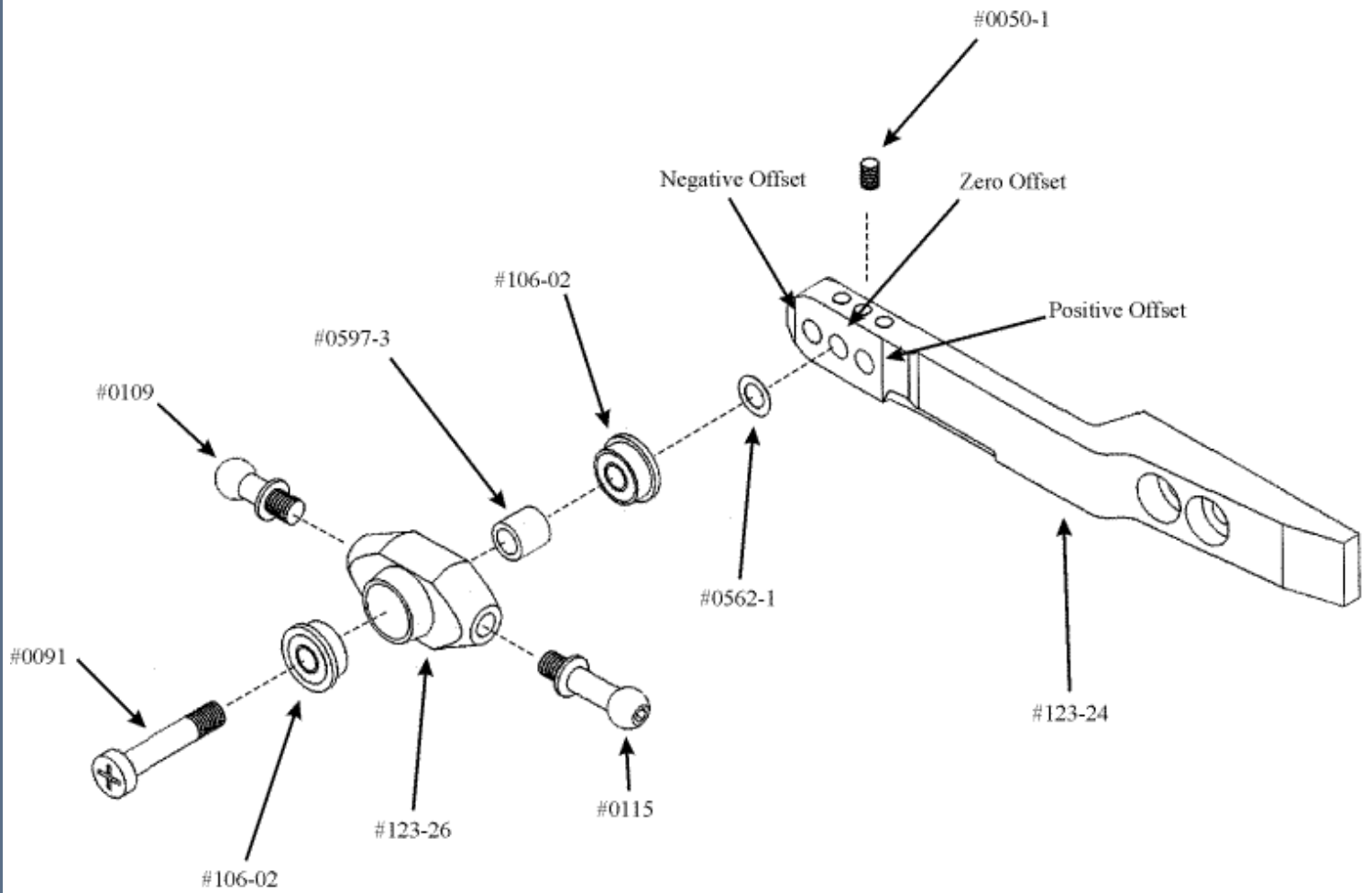
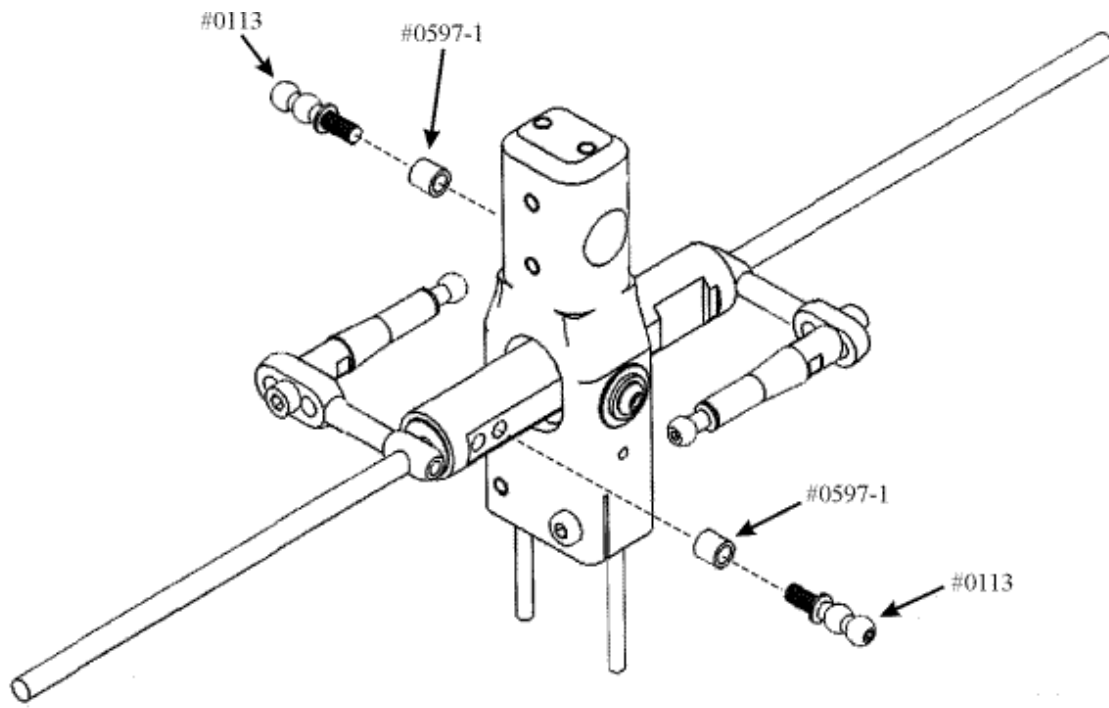
E-Mail: [minair@earthlink.net](mailto:minair@earthlink.net)



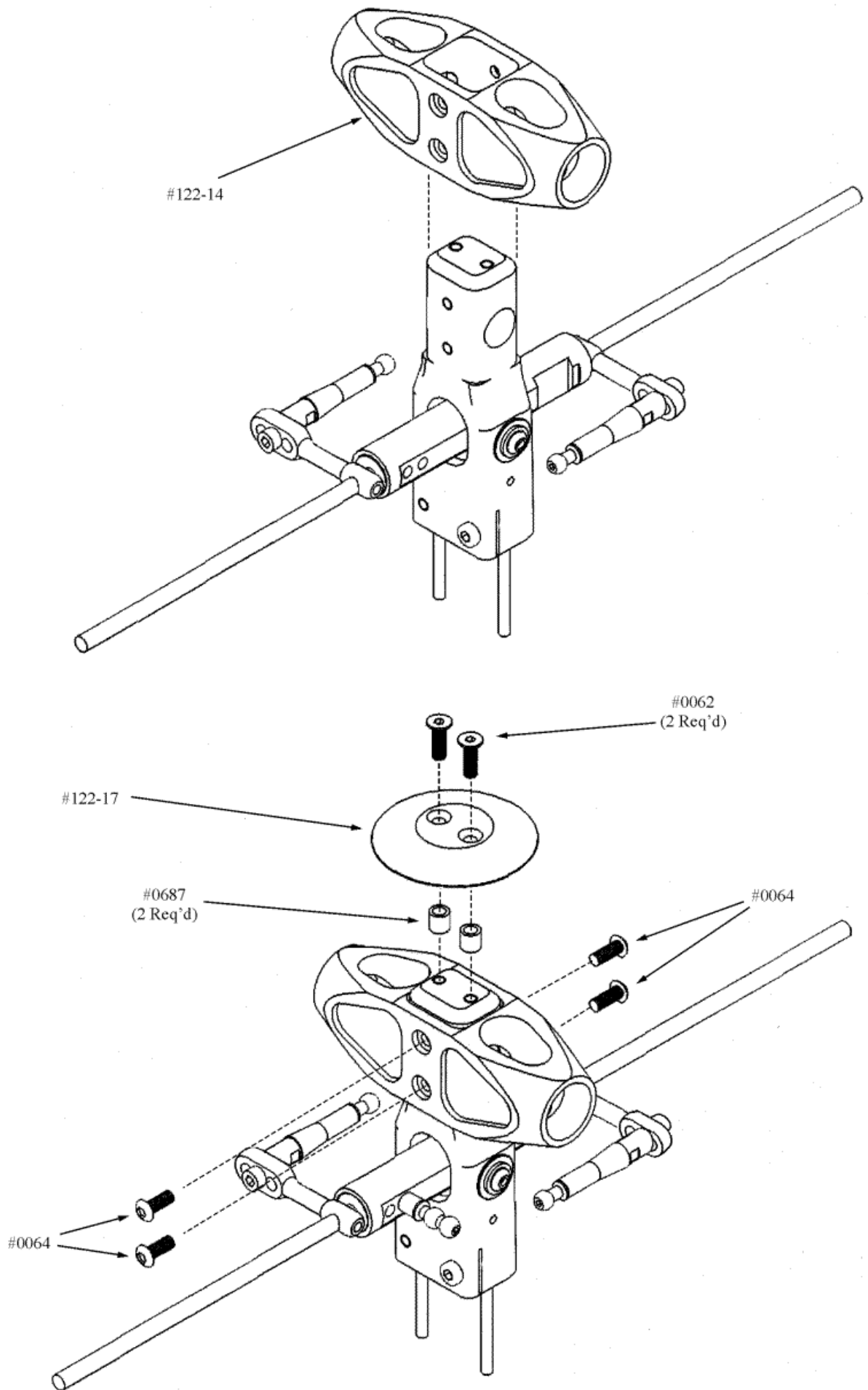
**Drawing # 1A**



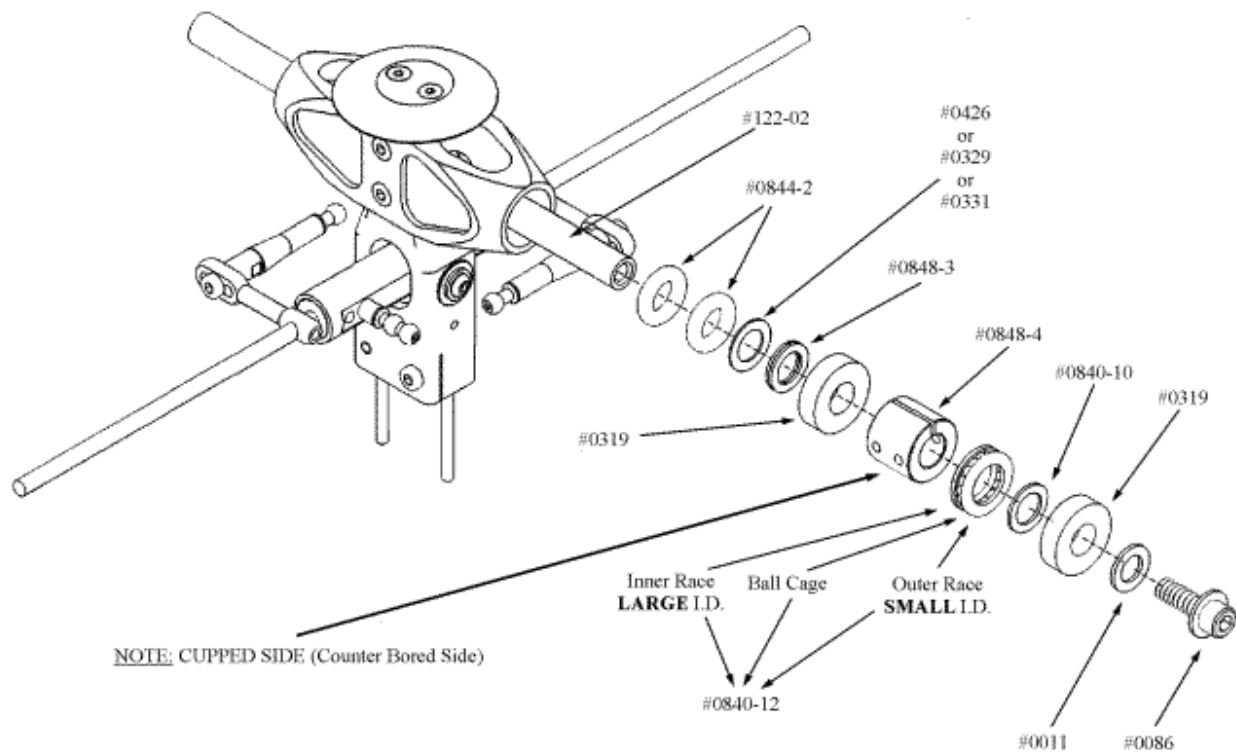
**Drawing # 1B**



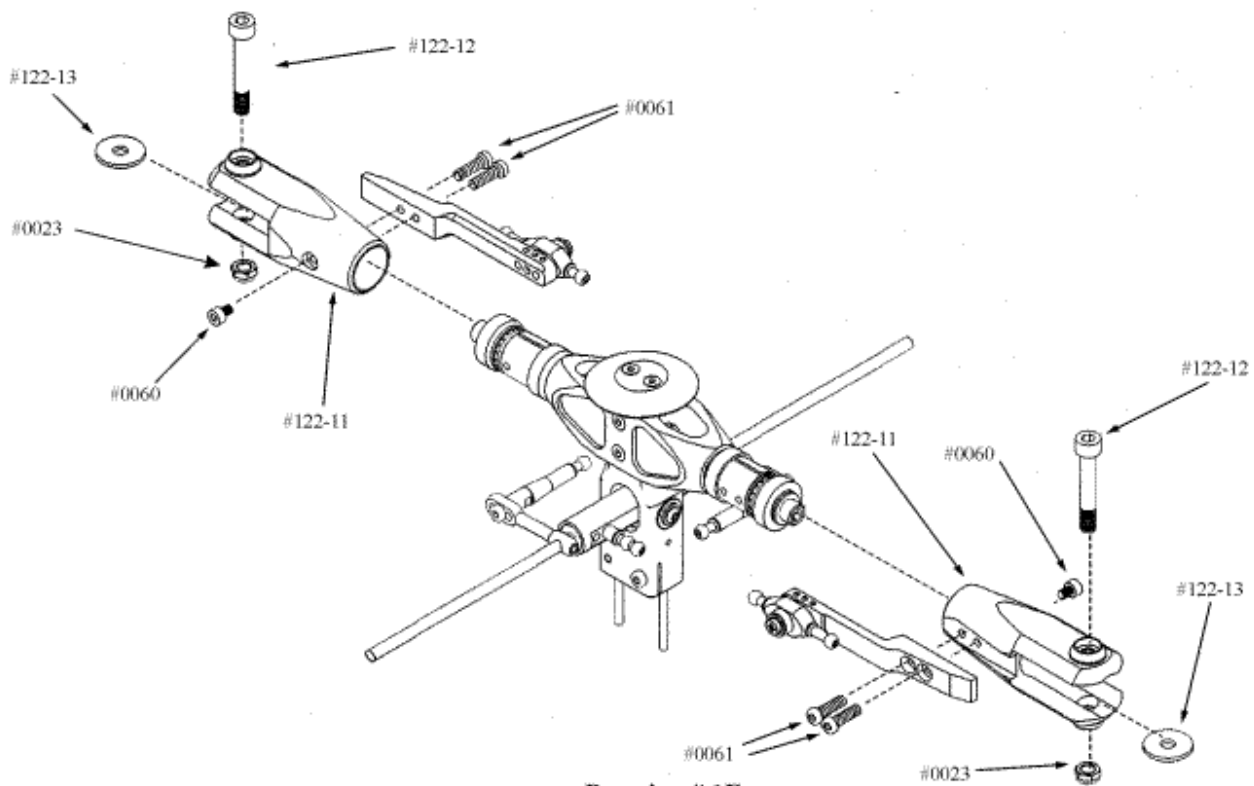
**Drawing # 1C**



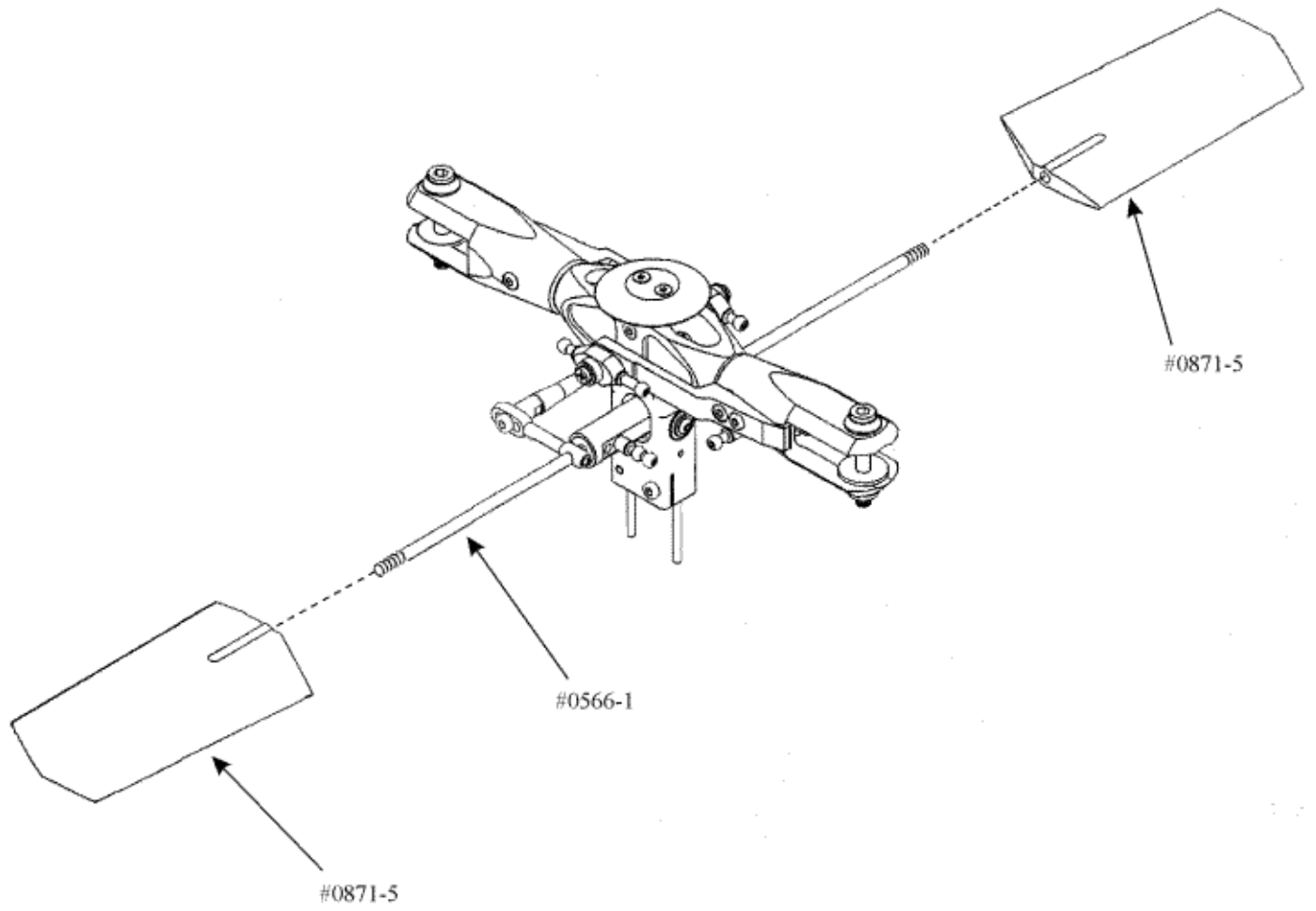
**Drawing # 1D**



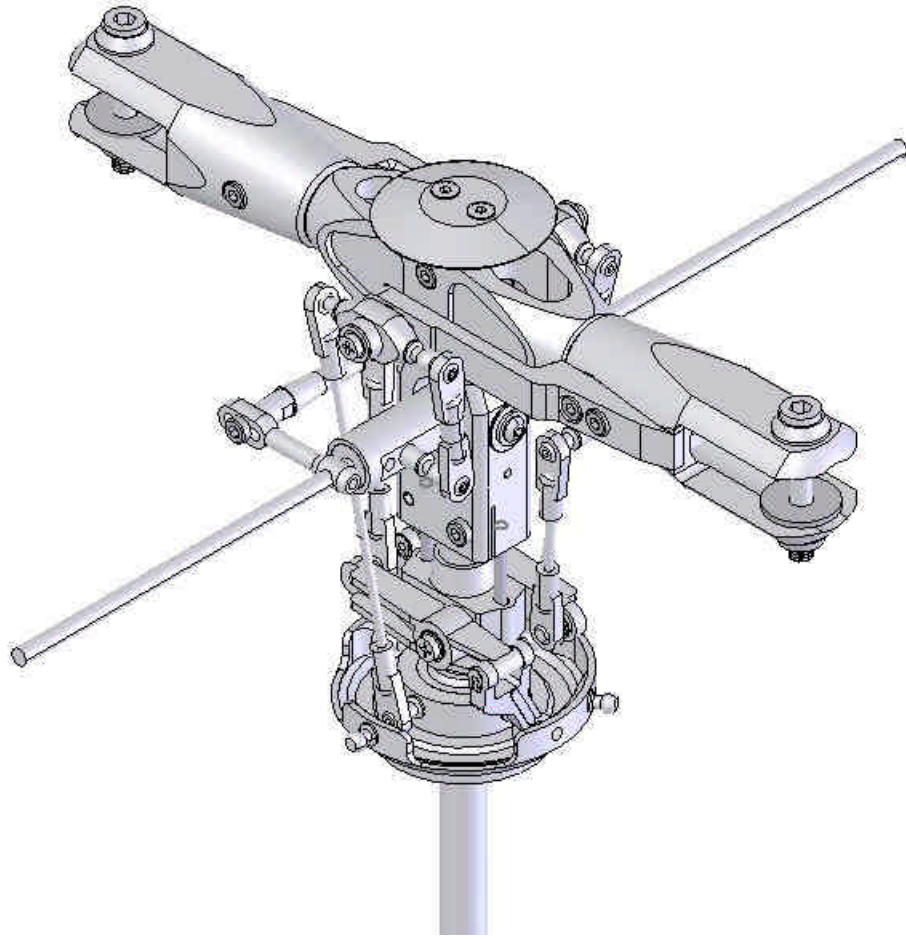
**Drawing # 1E**



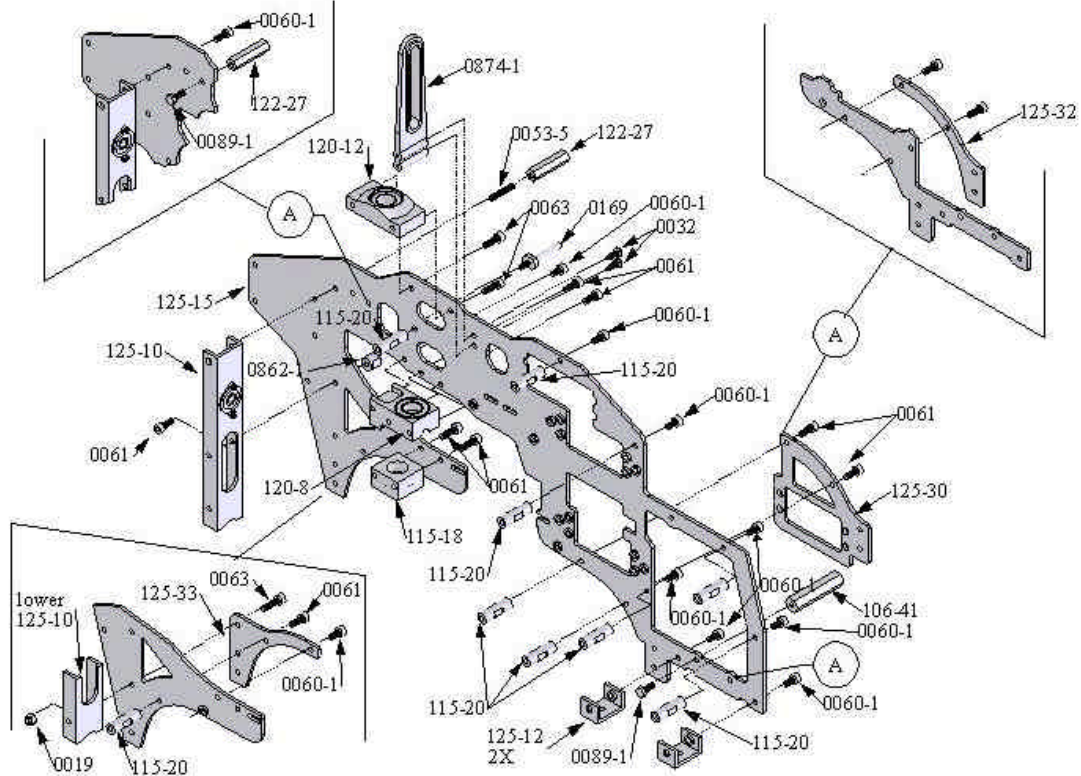
**Drawing # 1F**



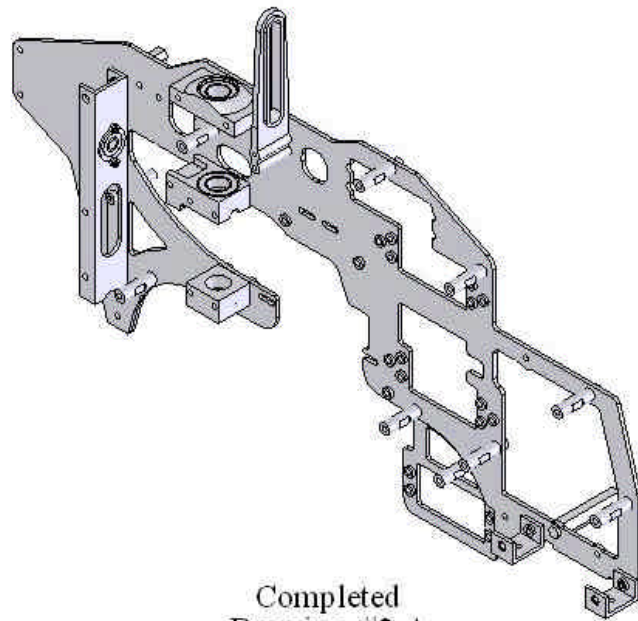
**Drawing # 1G**



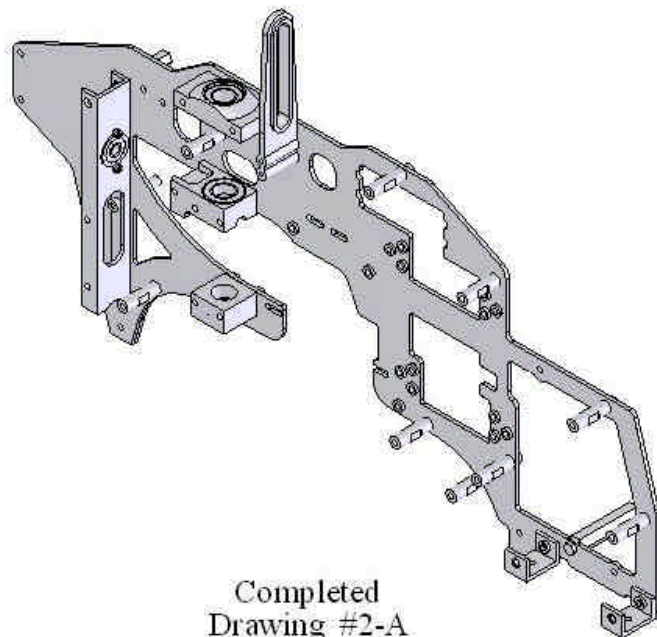
(A) INDICATES ALTERNATE PARTS LOCATION  
FOR FOWARD FACING MOTOR



Drawing #2-A

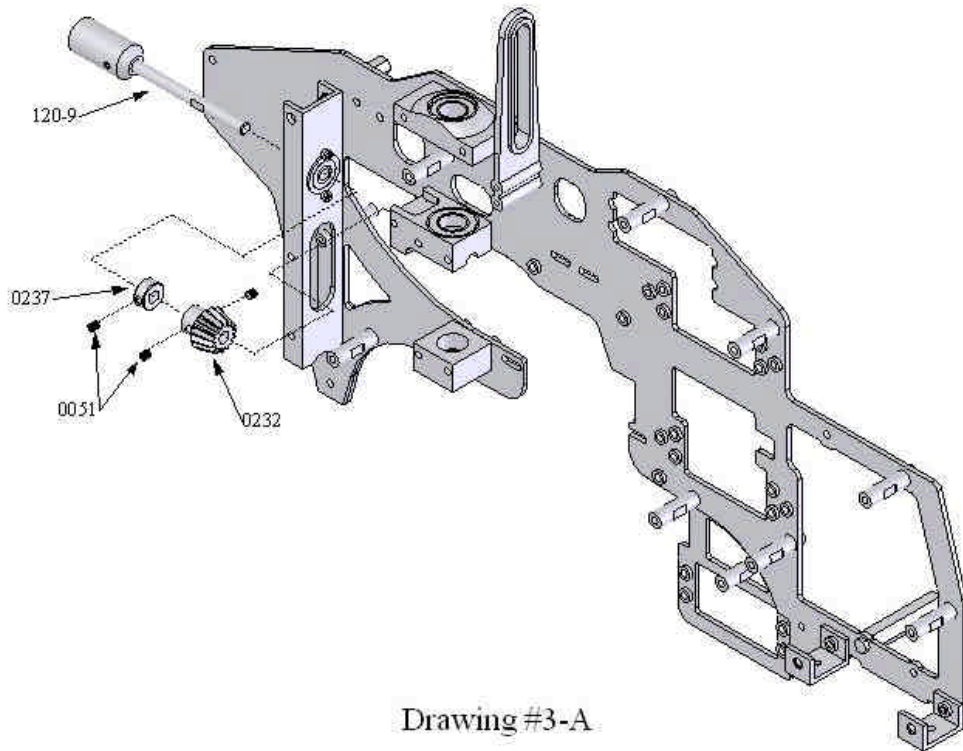


Completed  
Drawing #2-A  
rearward facing motor

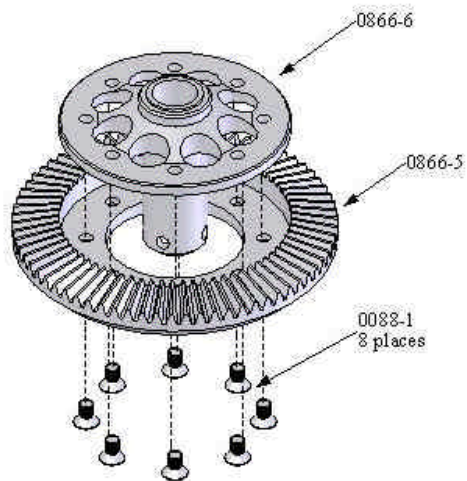


Completed  
Drawing #2-A  
forward facing motor

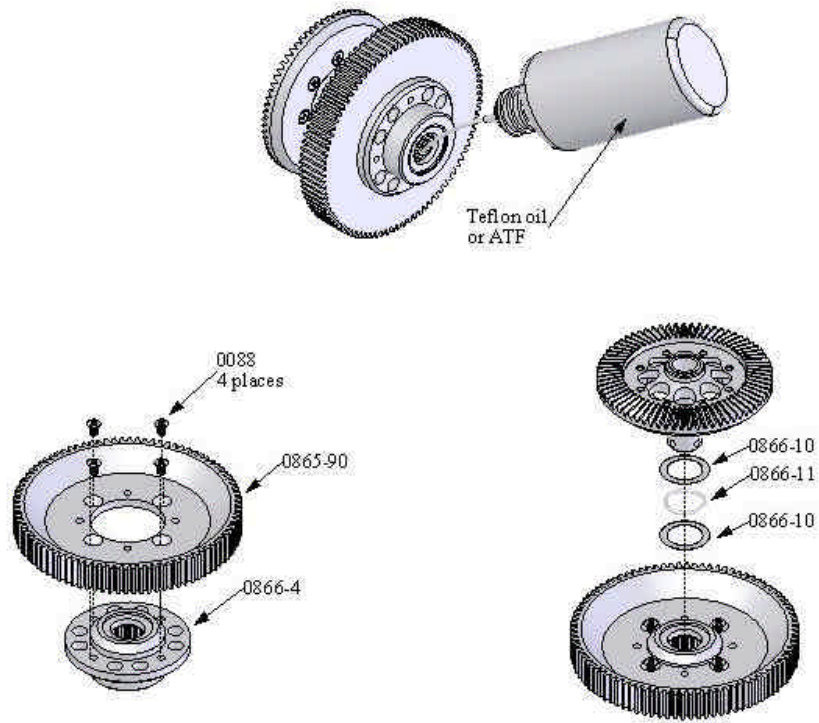




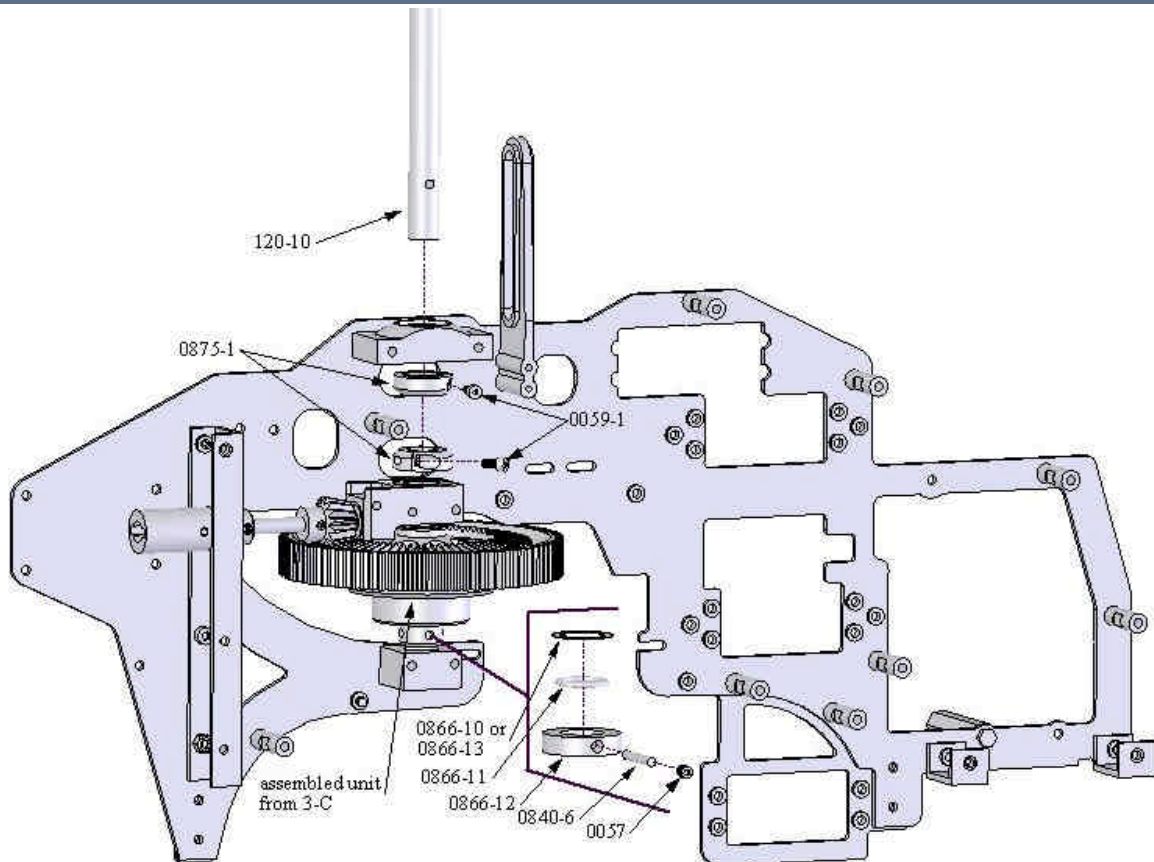
Drawing #3-A



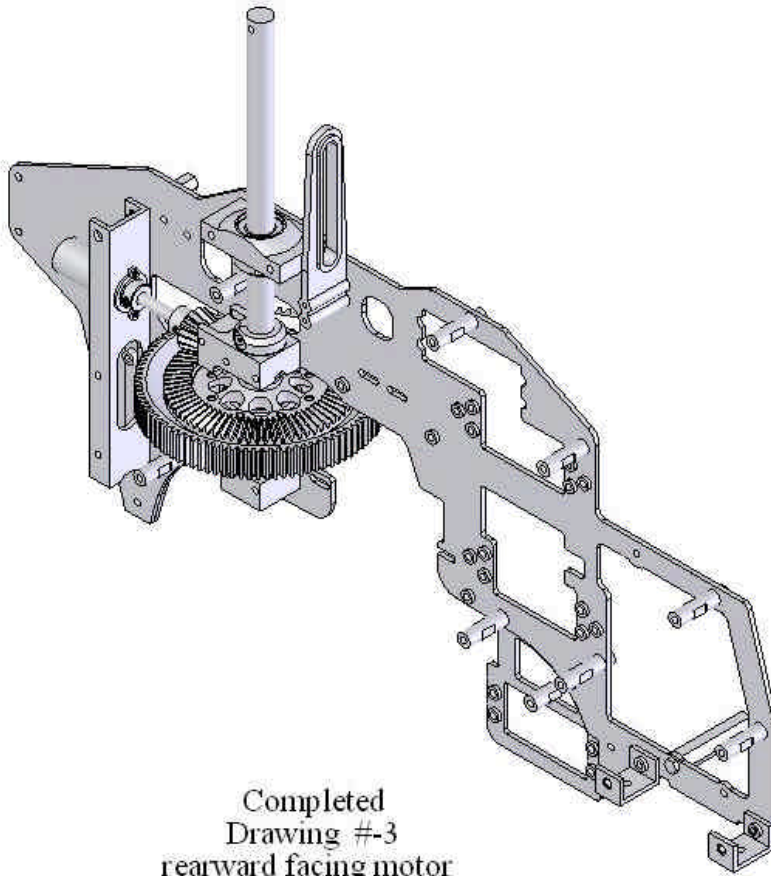
Drawing #3-B



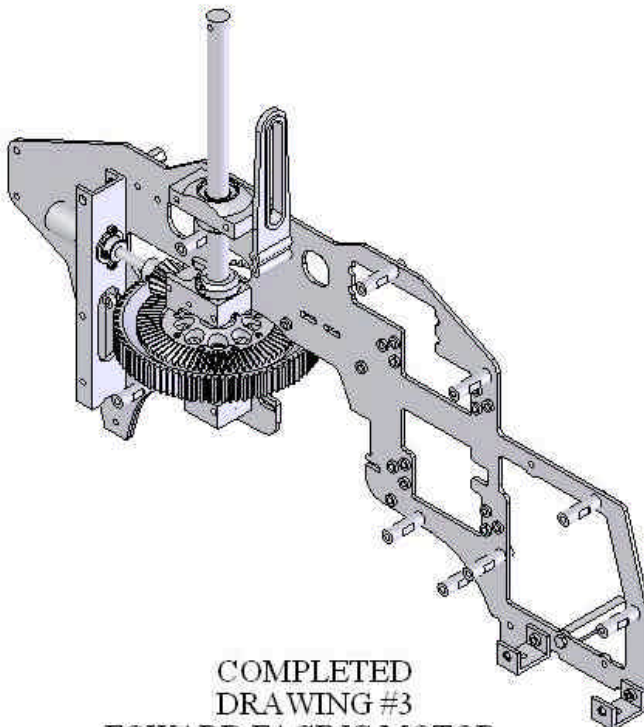
Drawing #3-C



Drawing #3-D

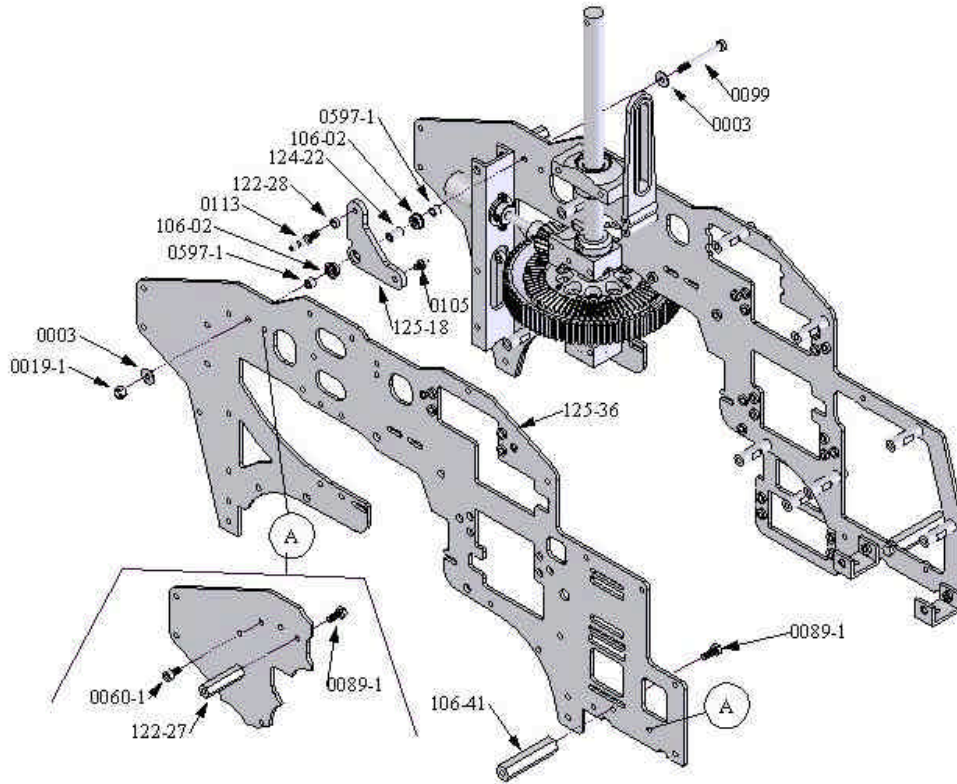


Completed  
Drawing #-3  
rearward facing motor



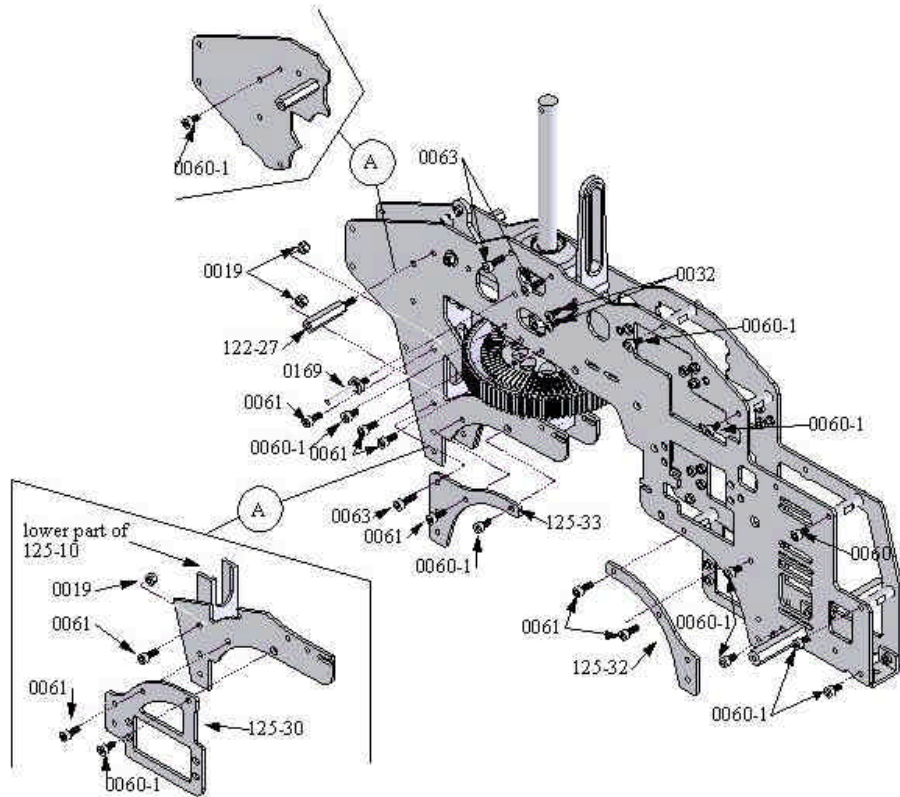
COMPLETED  
DRAWING #3  
FOWARD FACING MOTOR

(A) Indicates alternate parts location for forward mounted motor unit.

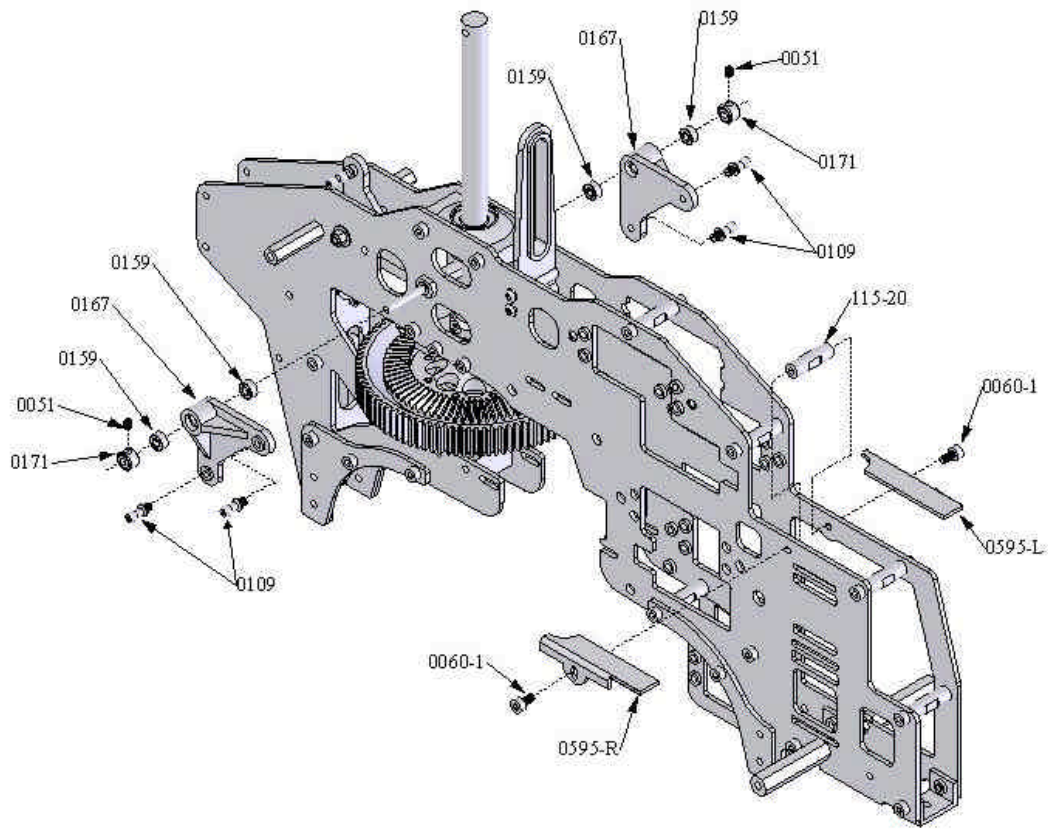


Drawing #4-A

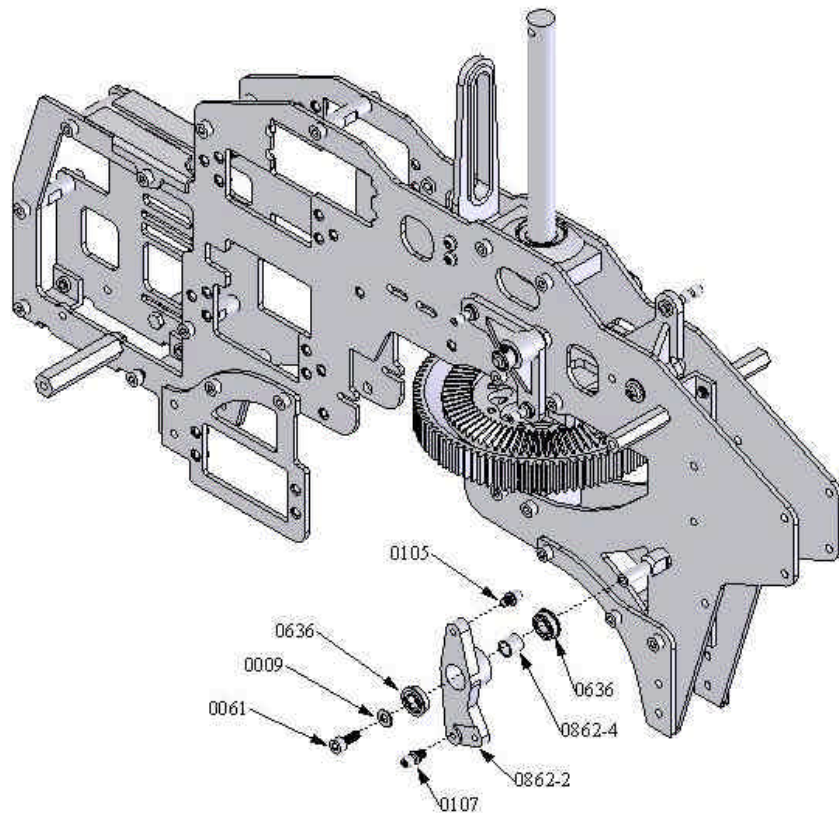
(A) Indicates alternate parts location for forward mounted motor unit.



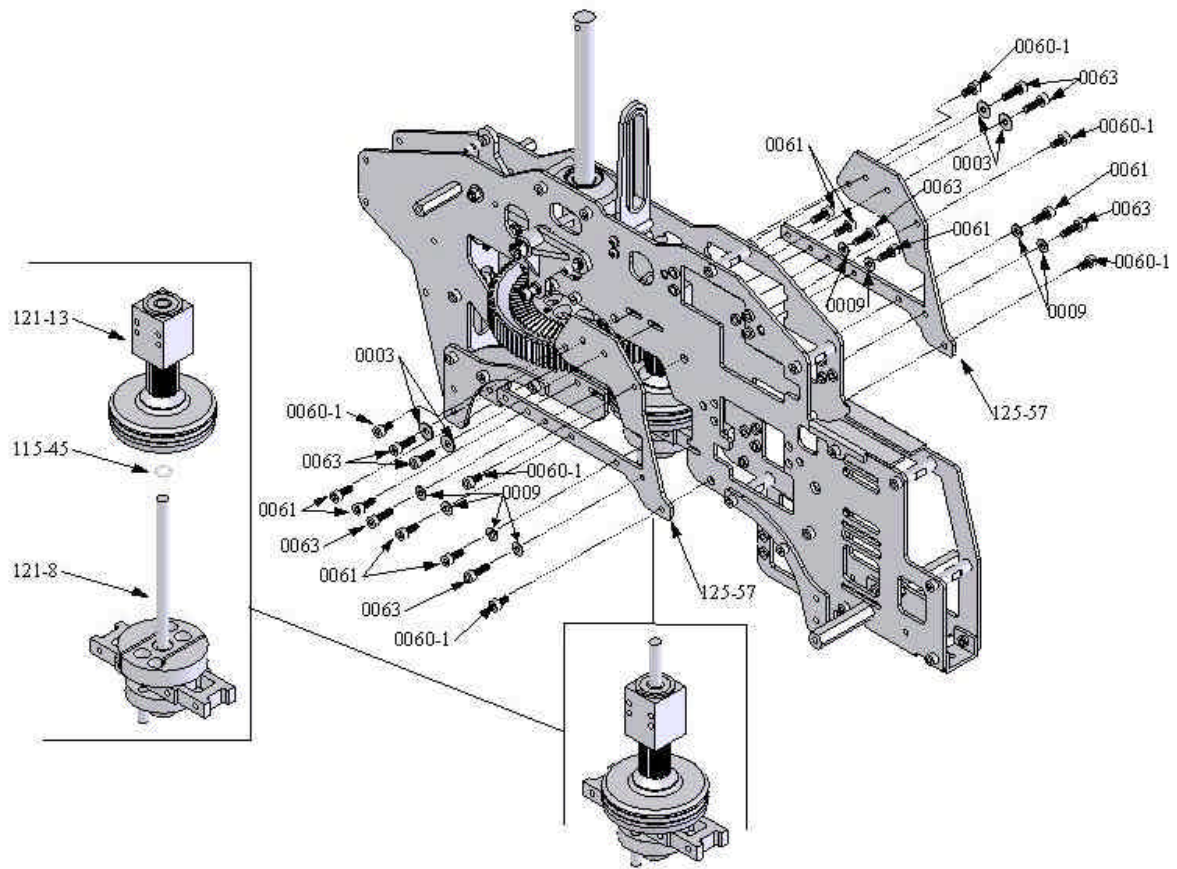
Drawing #4-B



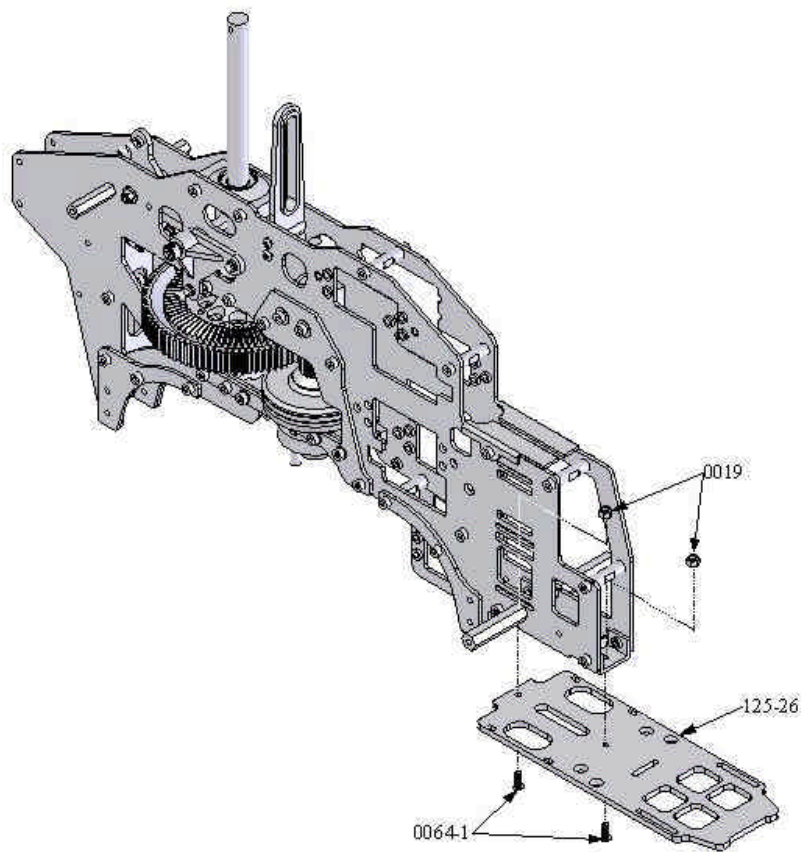
Drawing #4-C



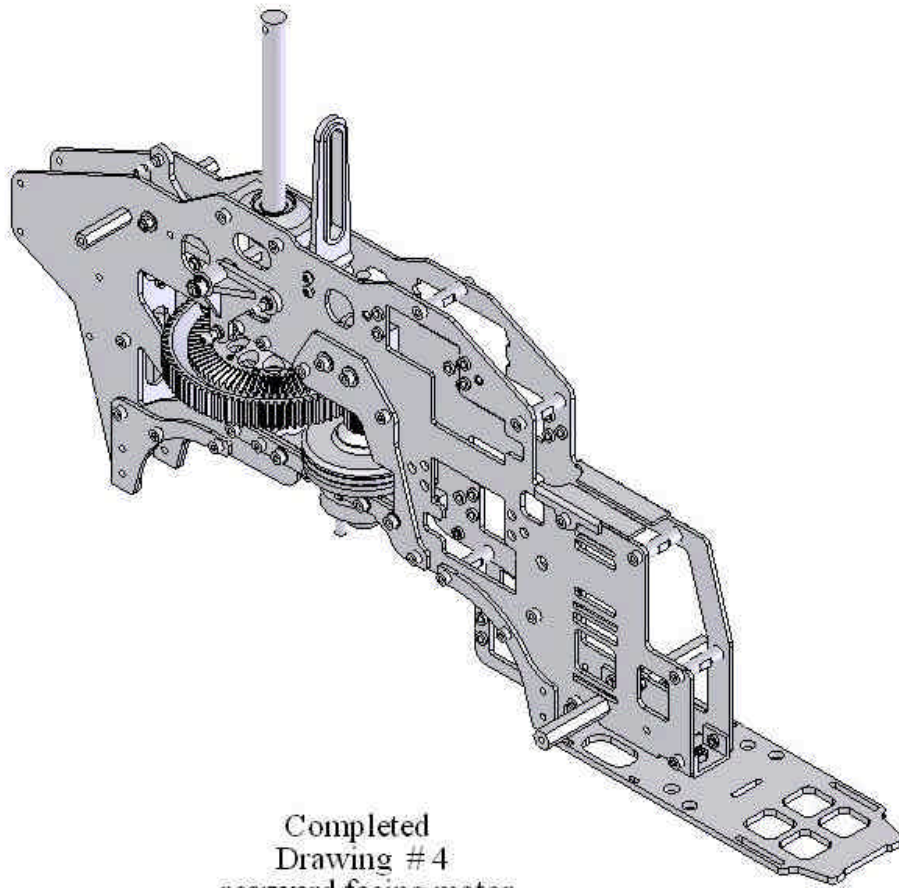
Drawing #4-D



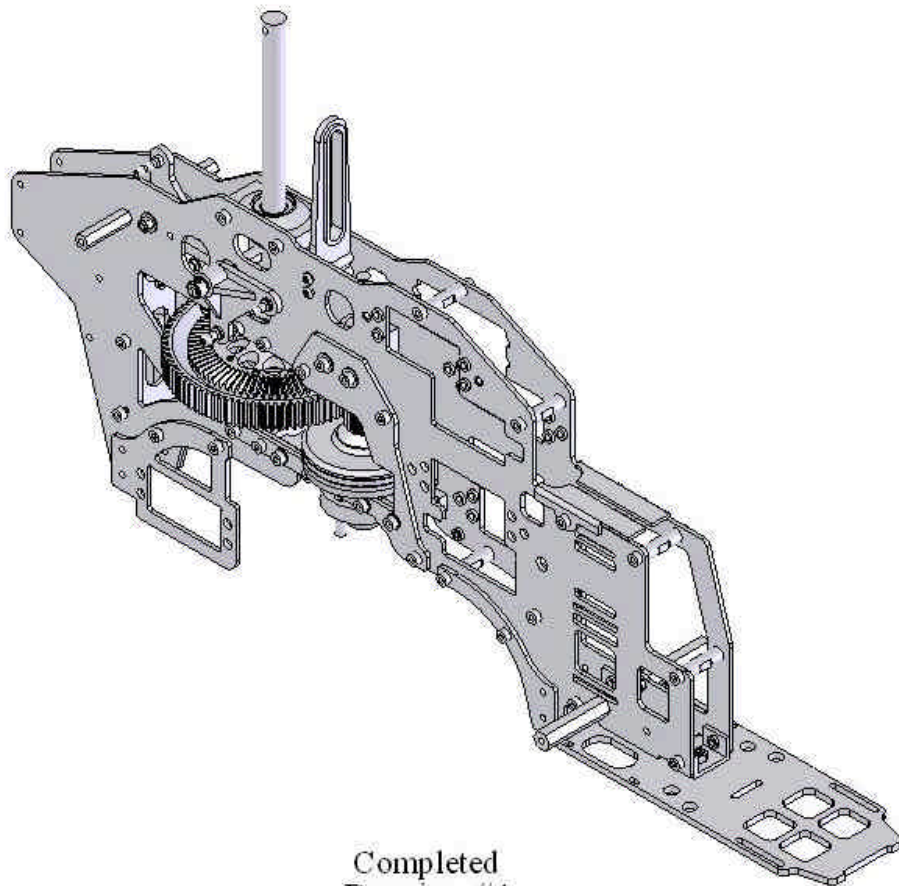
Drawing #4-E



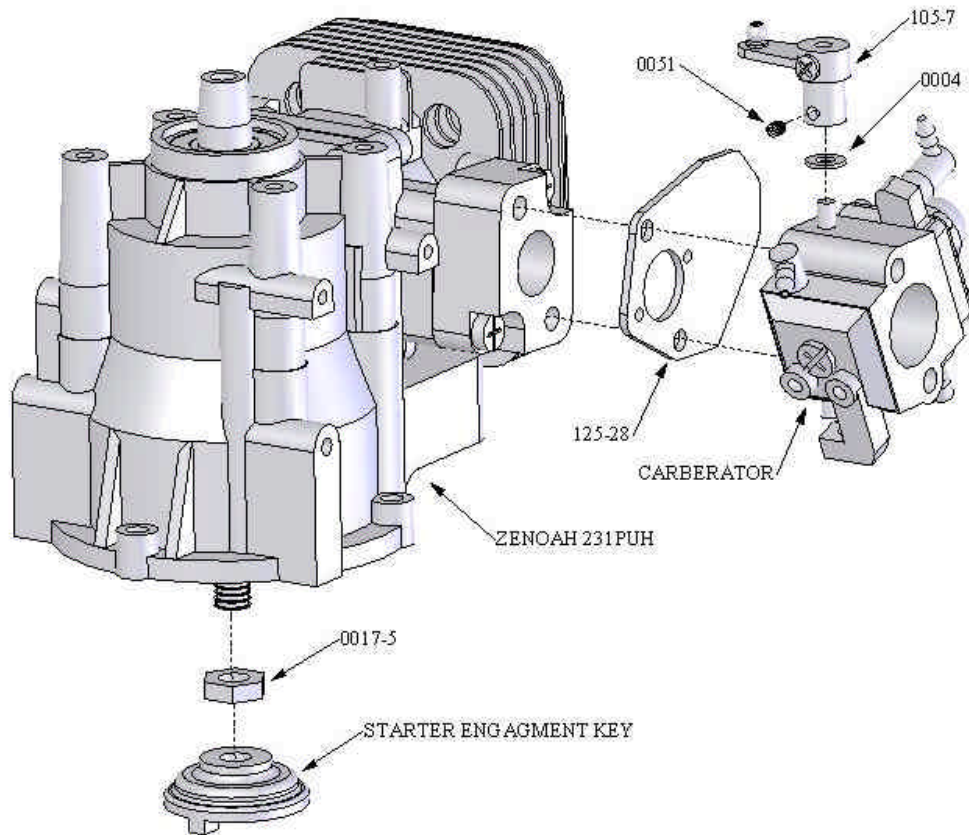
Drawing #4-F



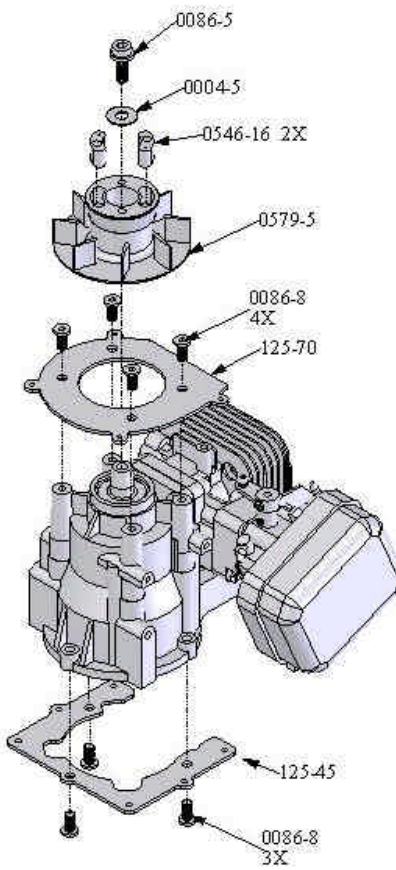
Completed  
Drawing # 4  
rearward facing motor



Completed  
Drawing #4  
foward facing motor

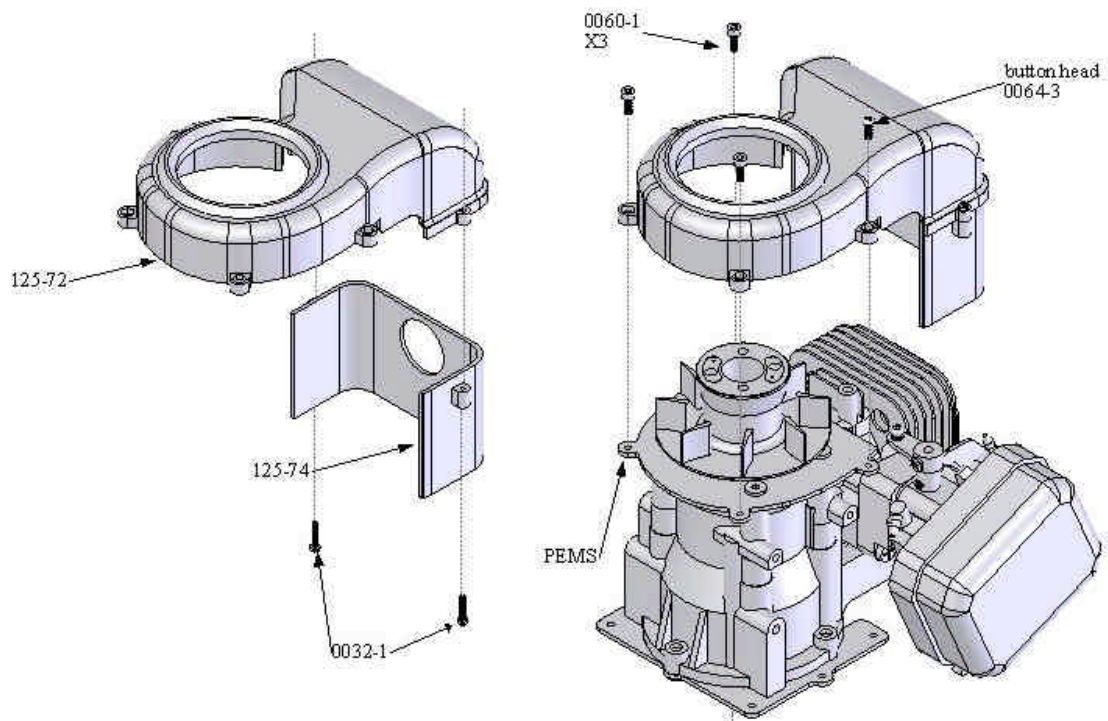


Drawing #5-A

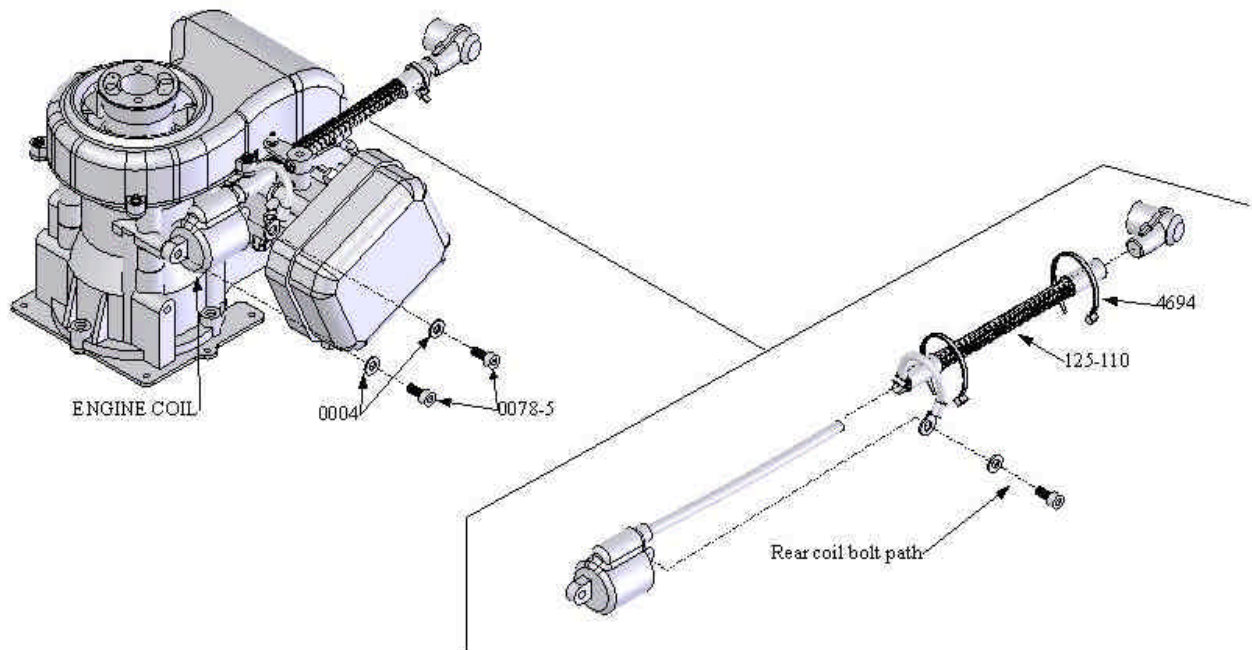


Drawing #5-B

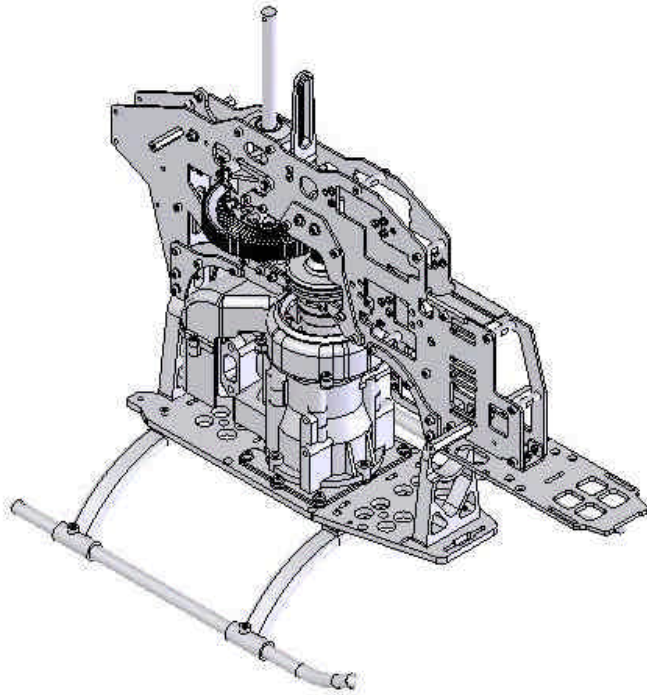




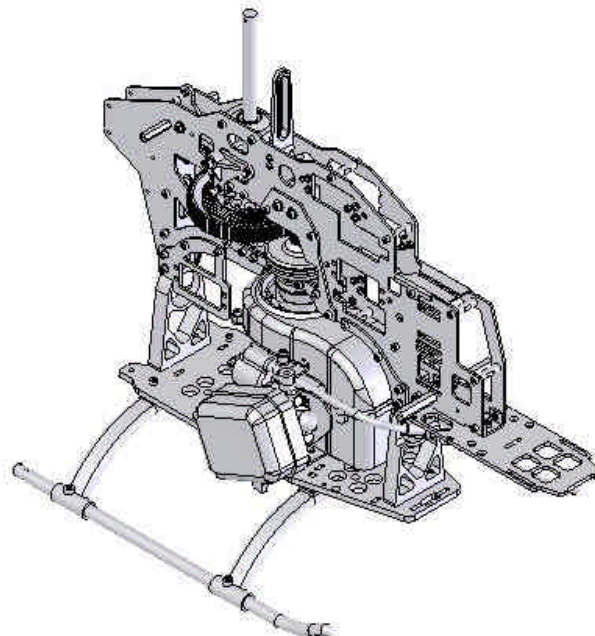
Drawing #5B-1



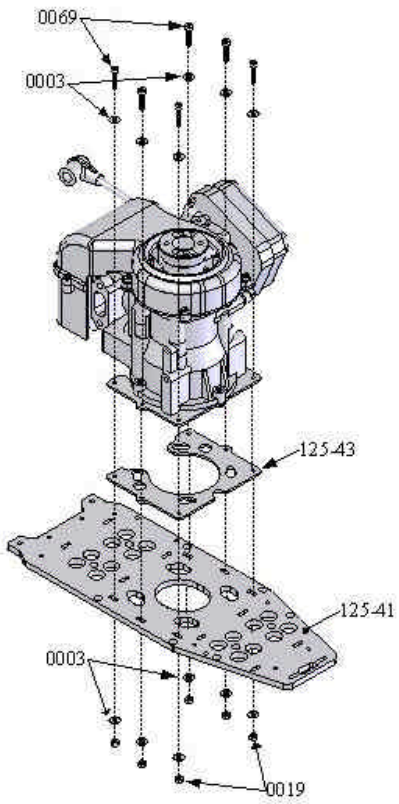
Drawing #5B-2



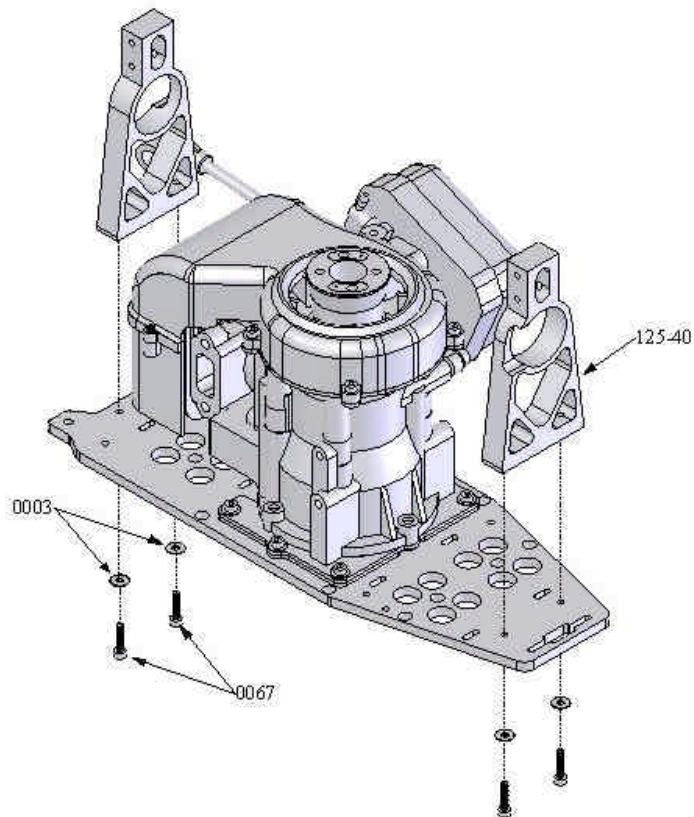
Completed Drawing #5  
motor facing rearward



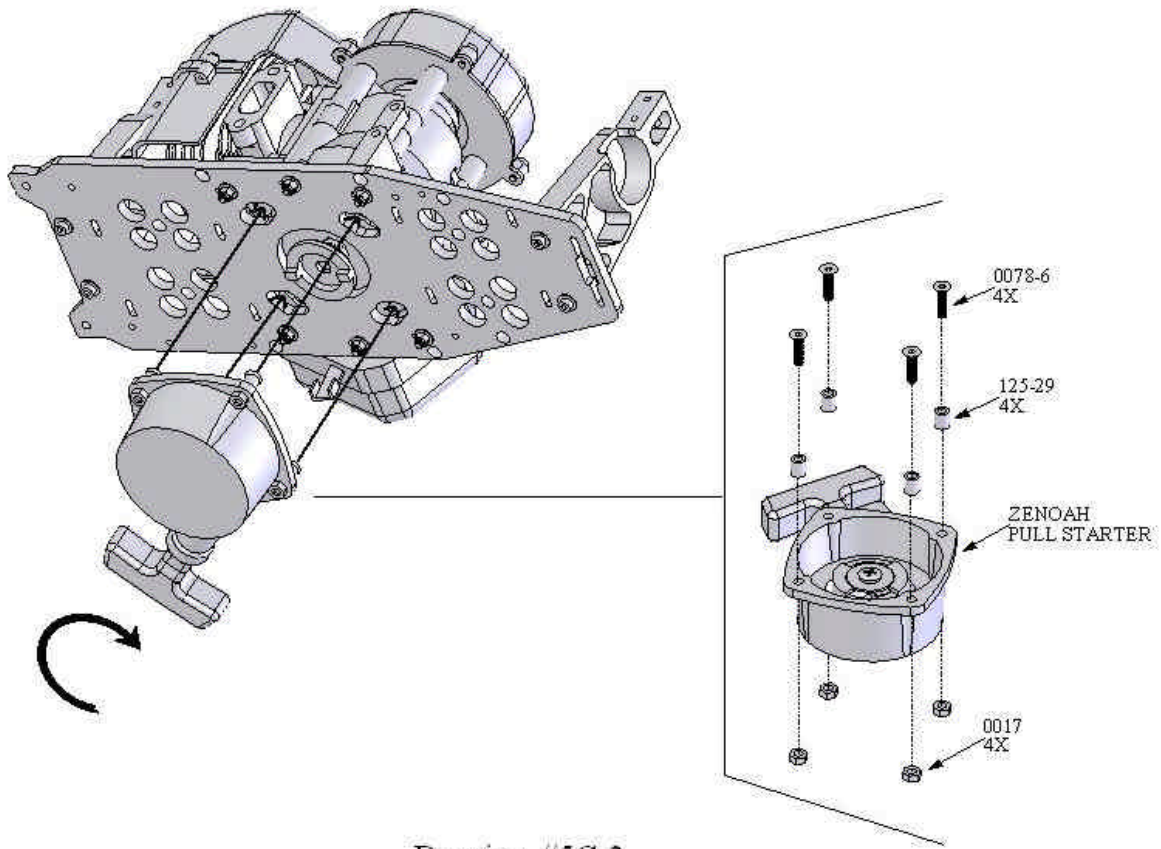
Completed Drawing #5  
foward facing motor



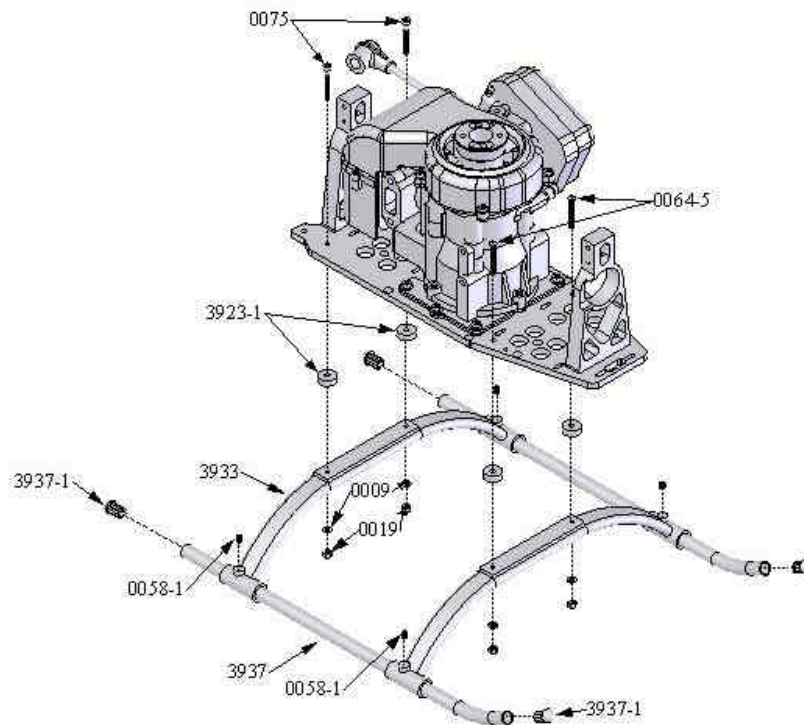
Drawing #5-C



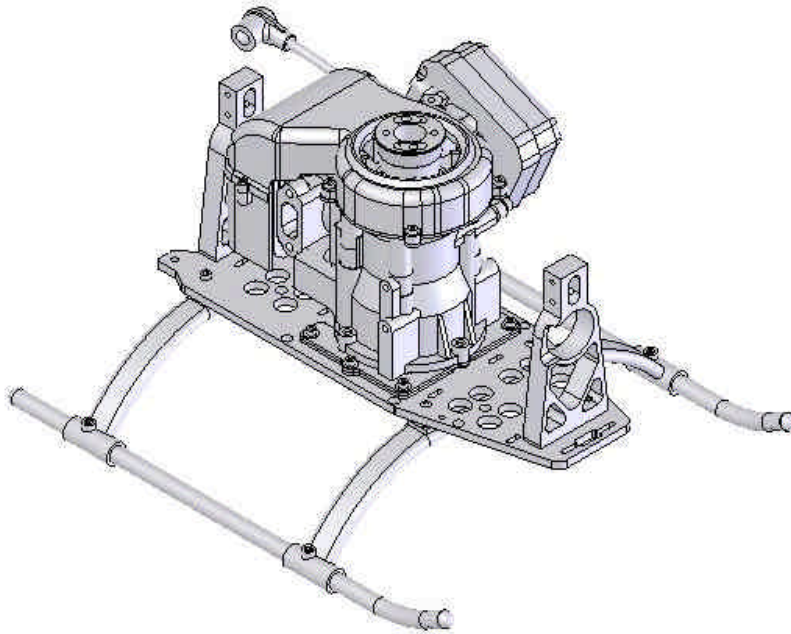
Drawing #5C-1



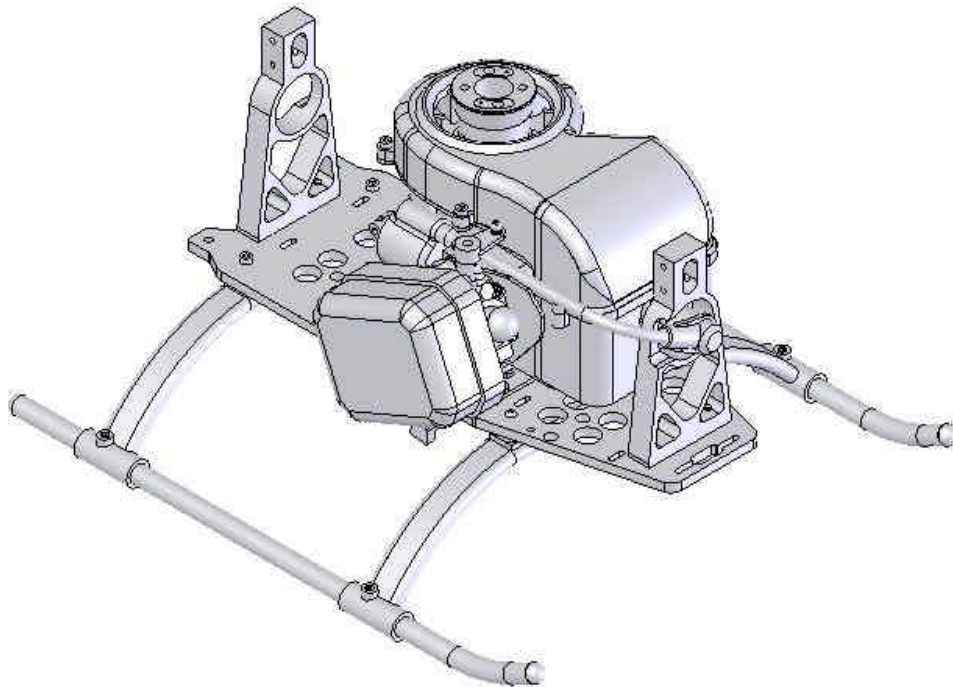
Drawing #5C-2



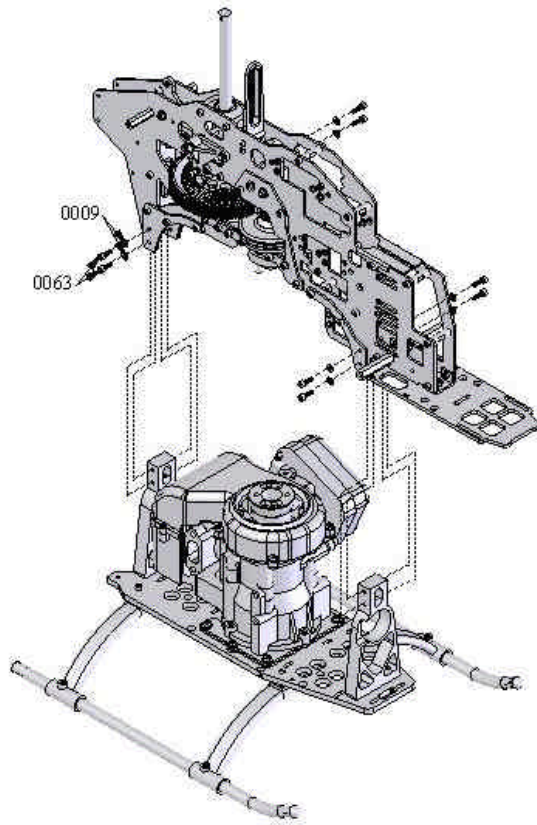
Drawing #5C-3



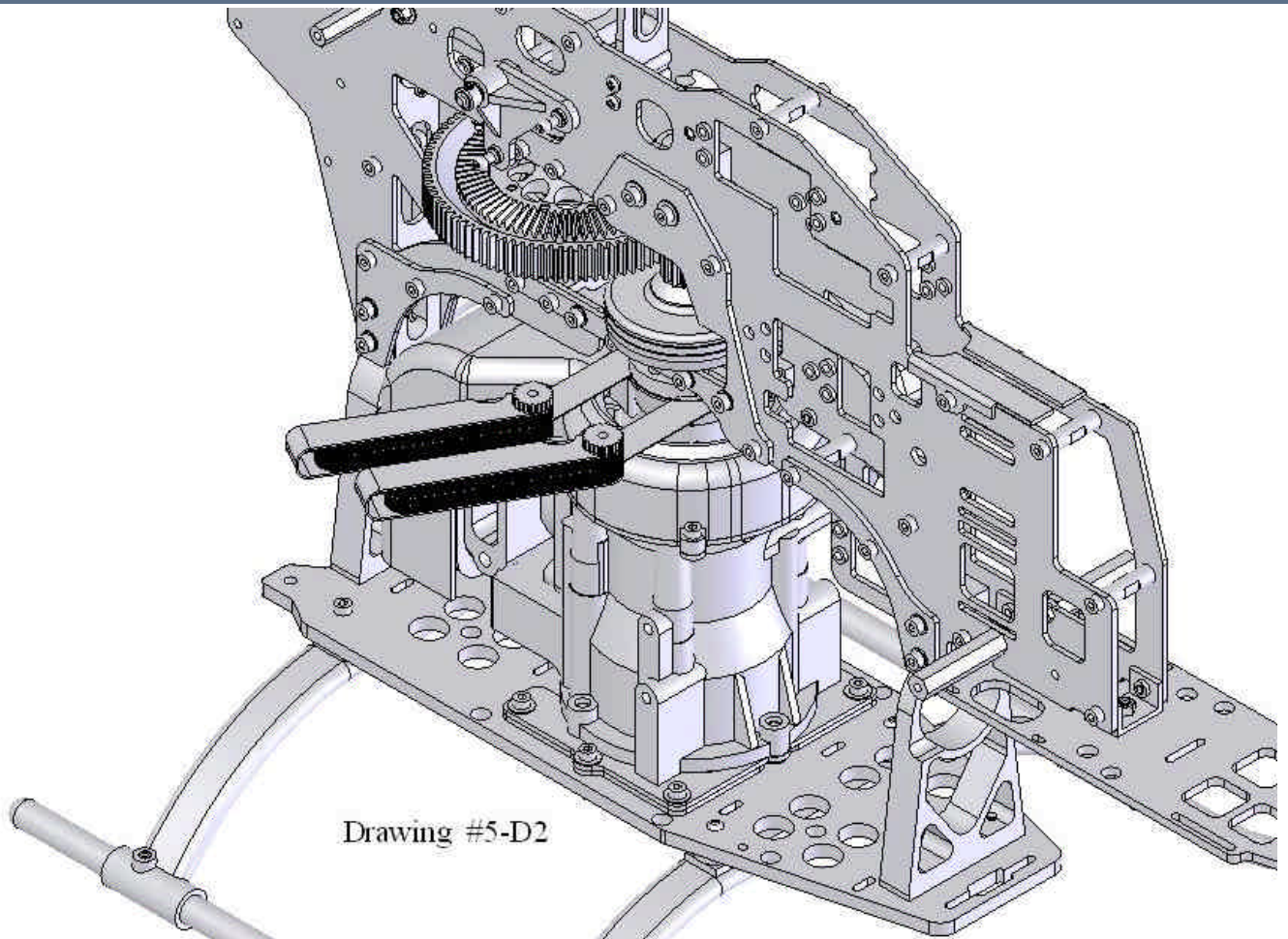
Assembled lower plate  
Drawing #5-D



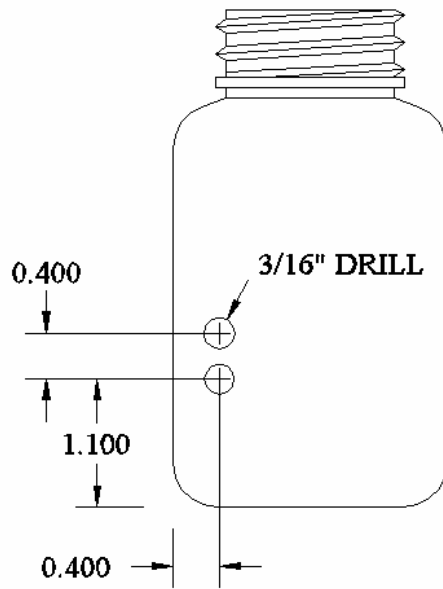
Assembled lower plate for  
forward facing motor  
Drawing #5-D



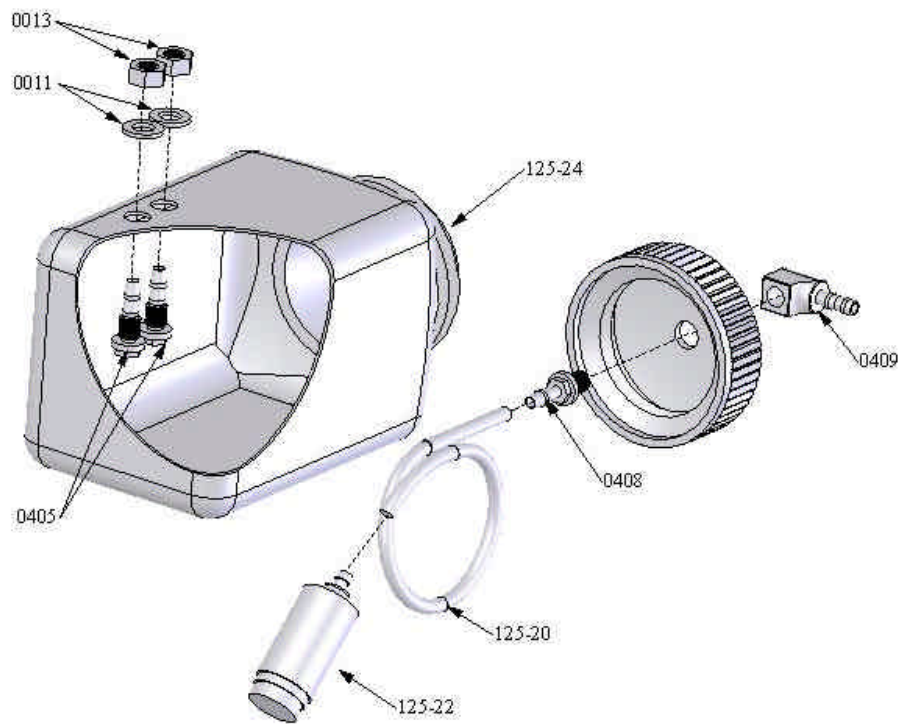
Drawing #5D-1



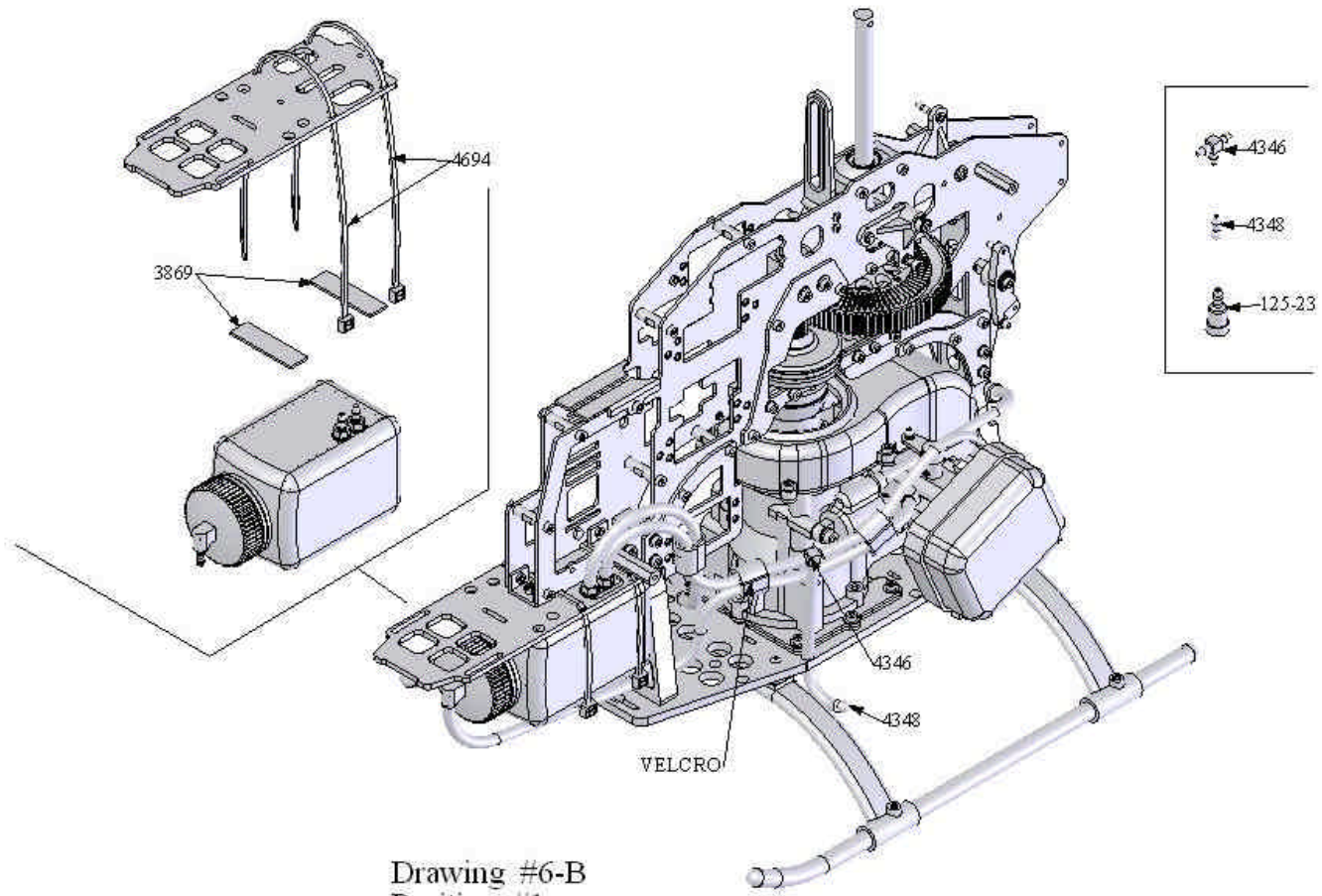
Drawing #5-D2



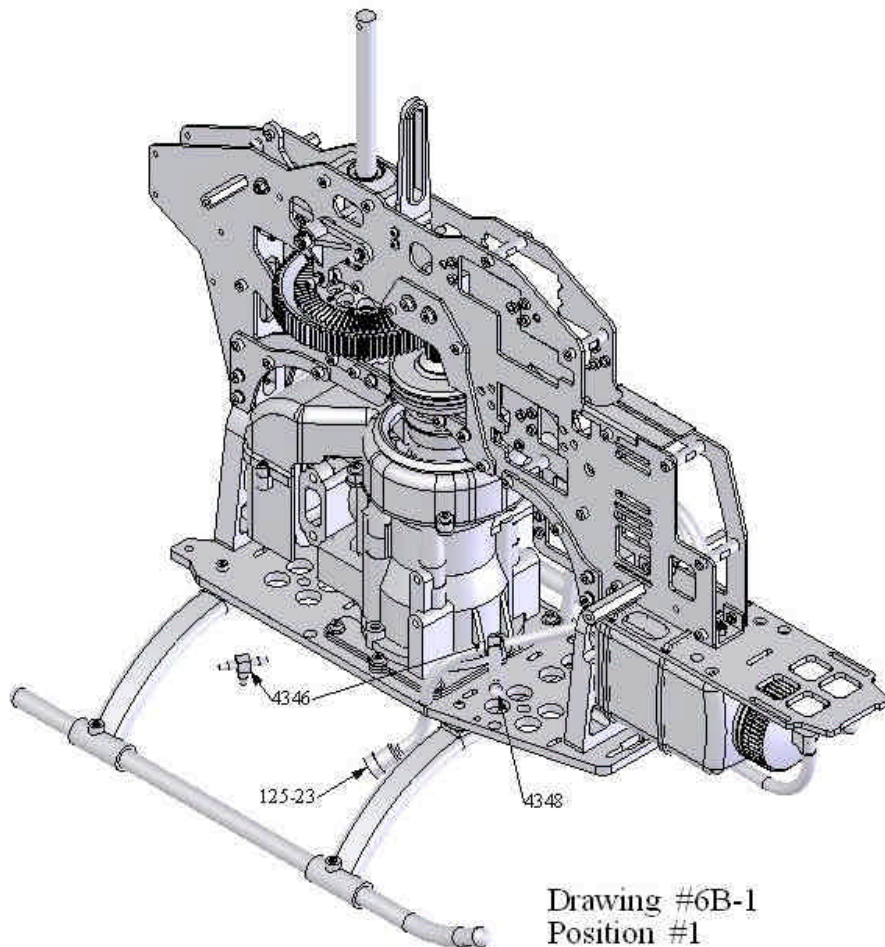
Drawing #6A



Drawing #6-A-1

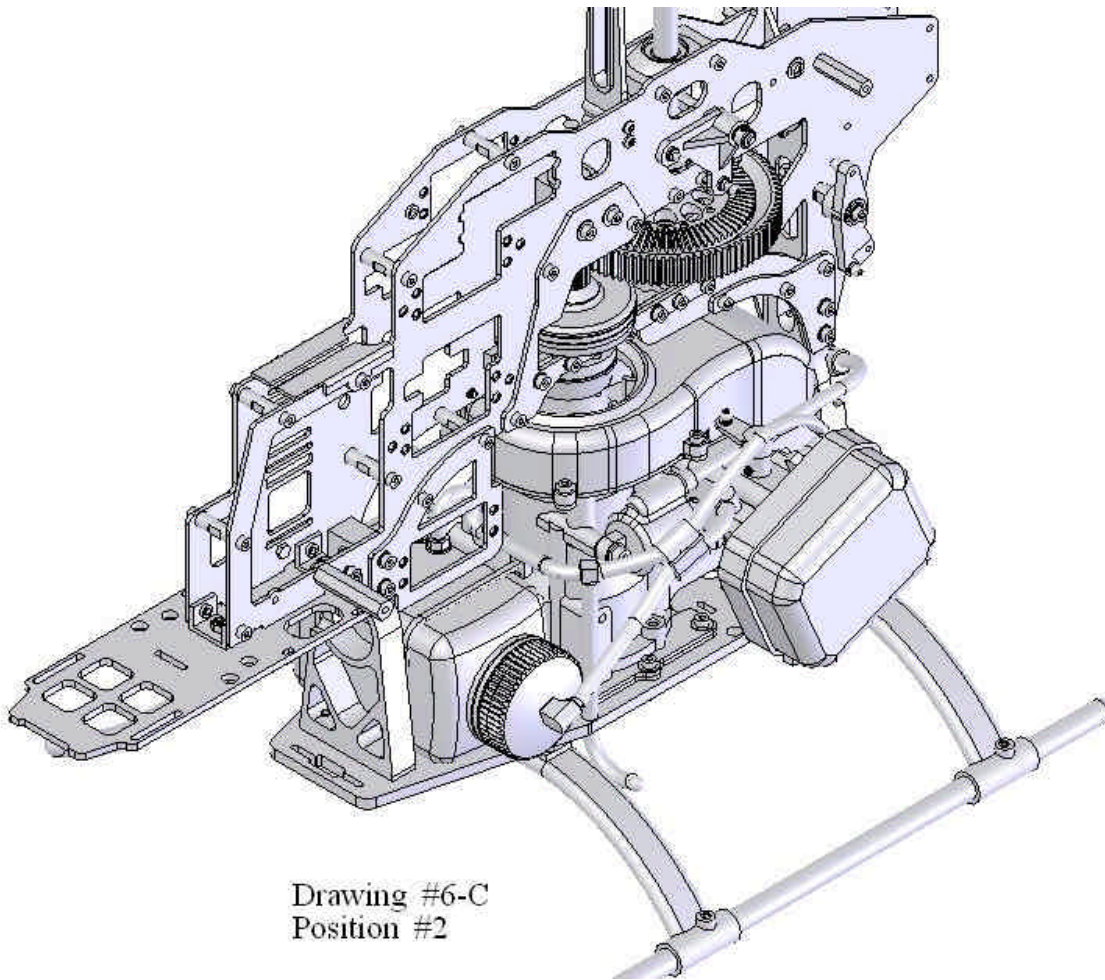


Drawing #6-B  
Position #1

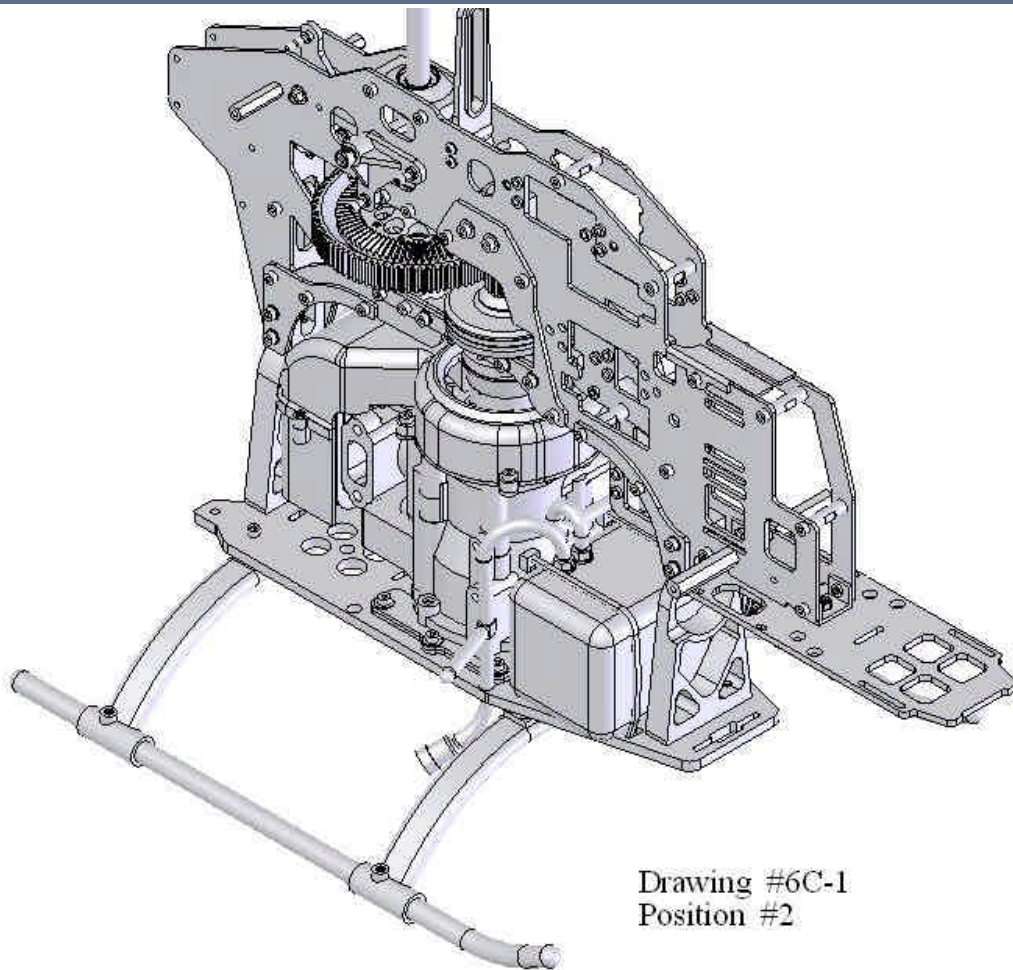


Drawing #6B-1  
Position #1

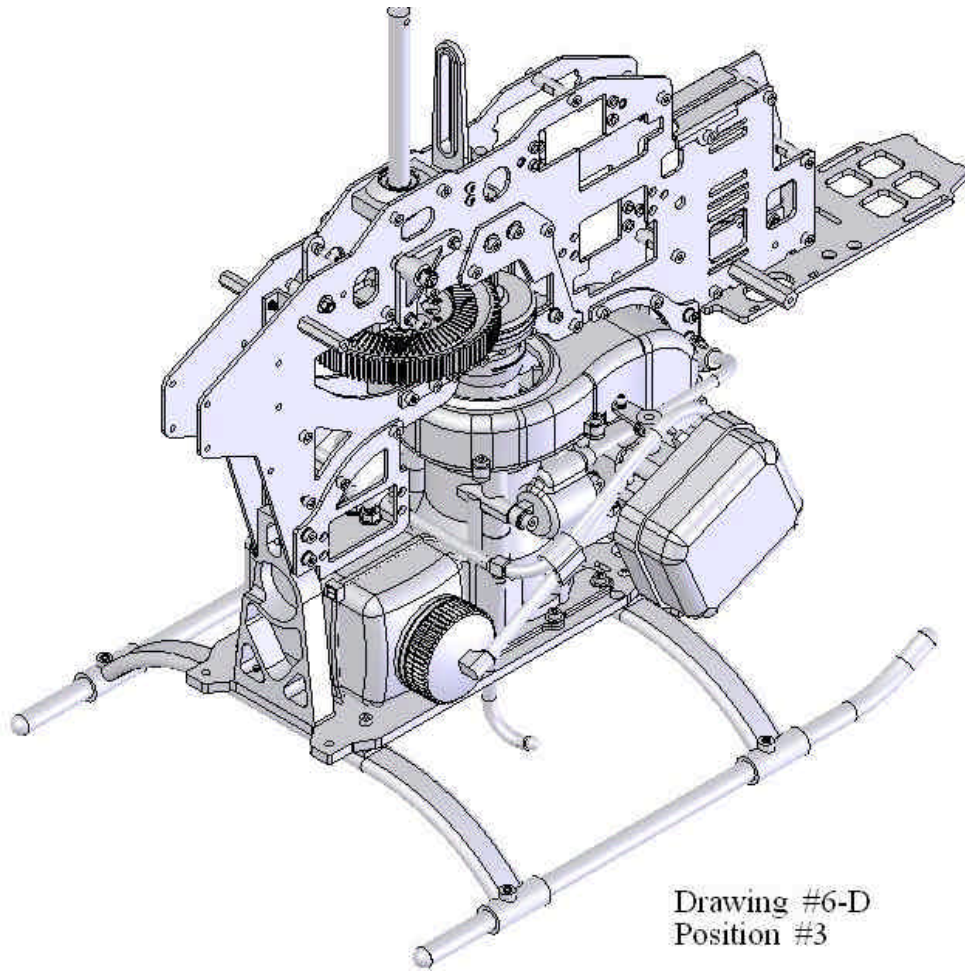




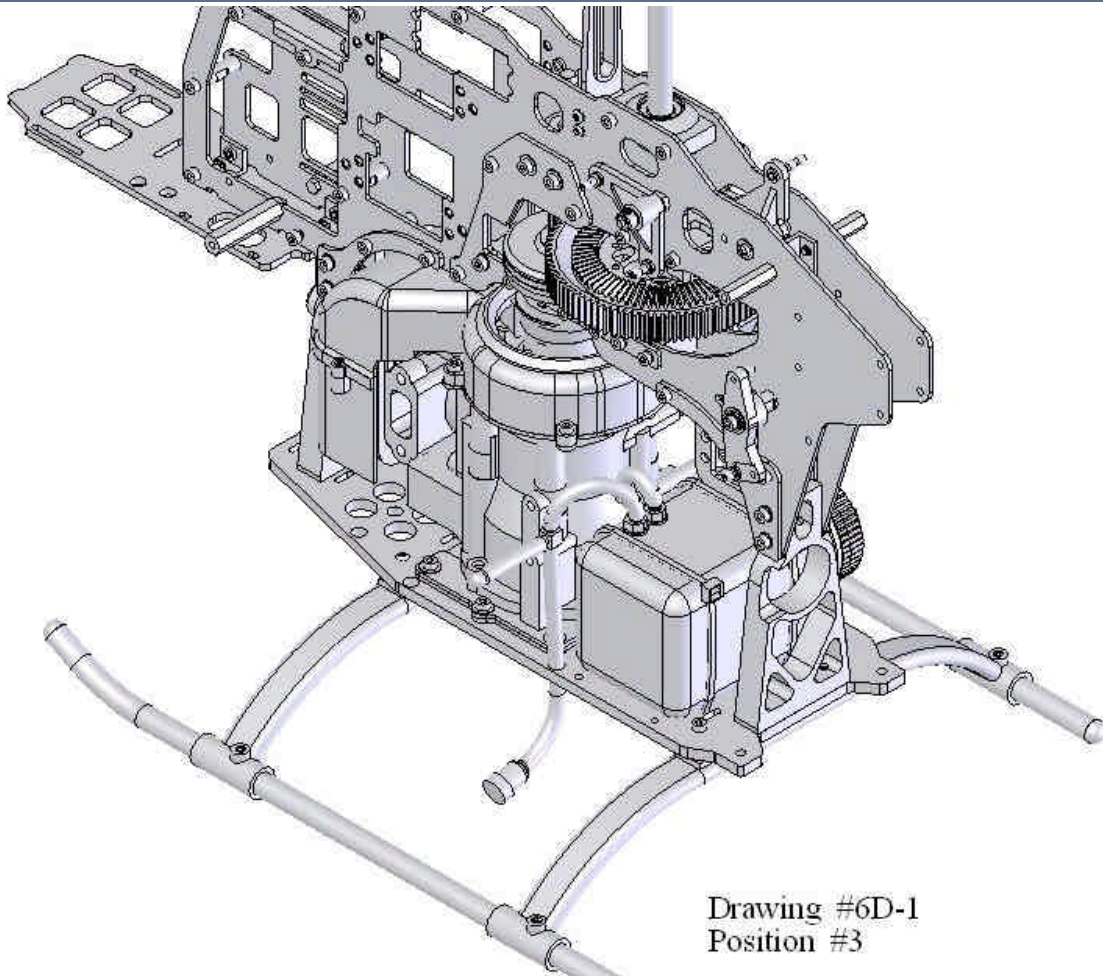
Drawing #6-C  
Position #2



Drawing #6C-1  
Position #2

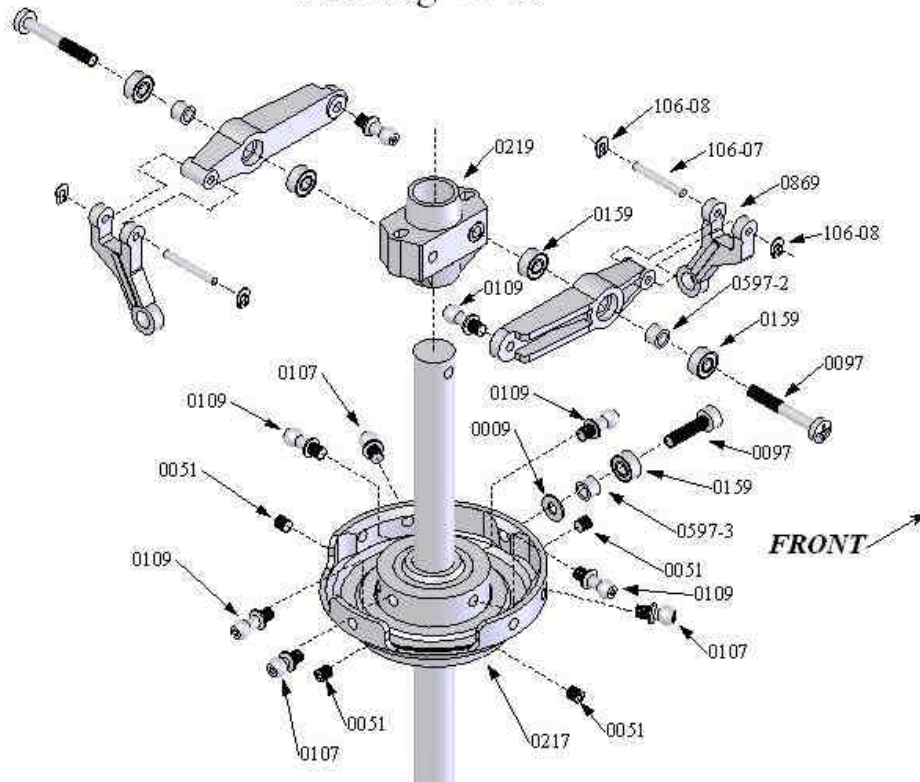


Drawing #6-D  
Position #3

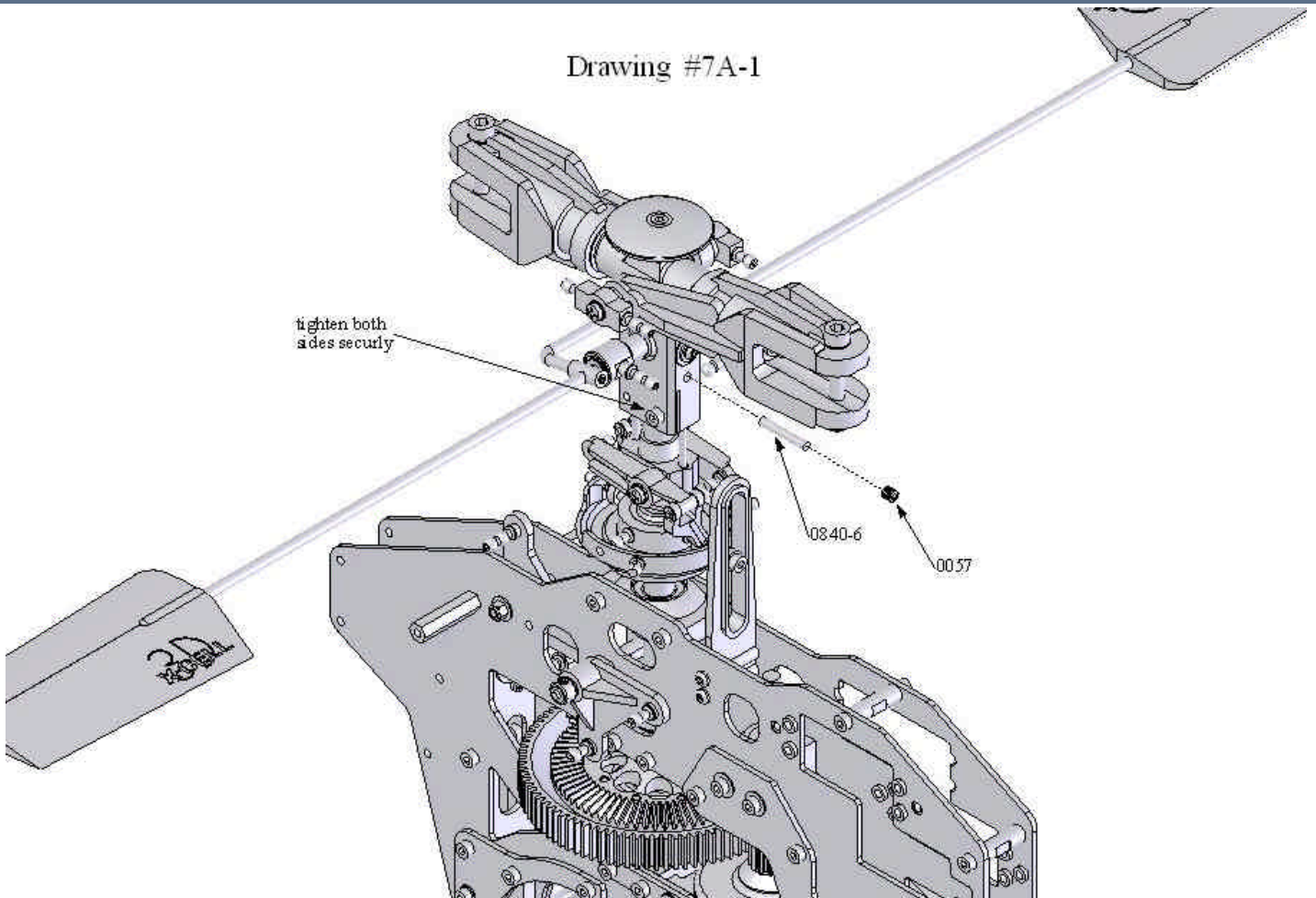


Drawing #6D-1  
Position #3

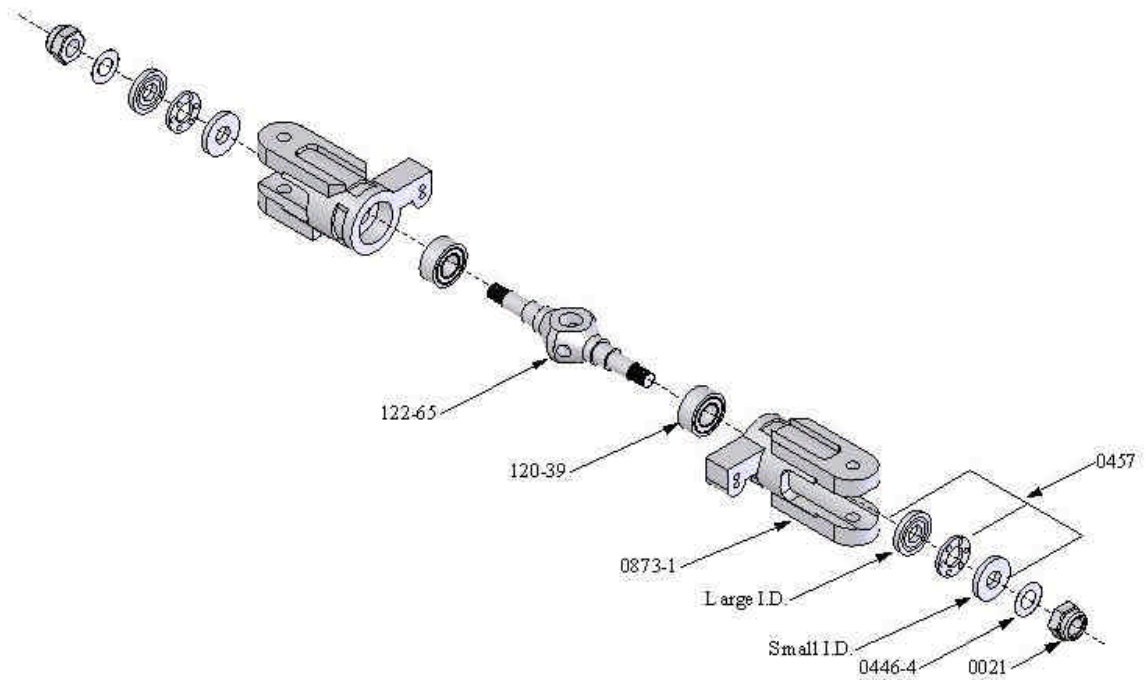
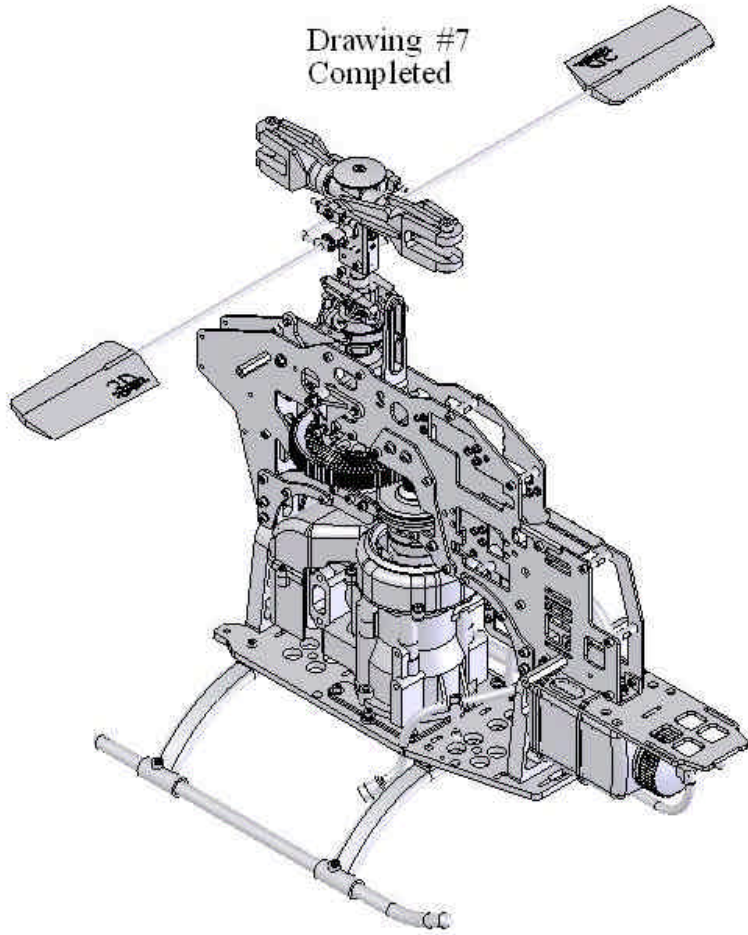
Drawing #7-A



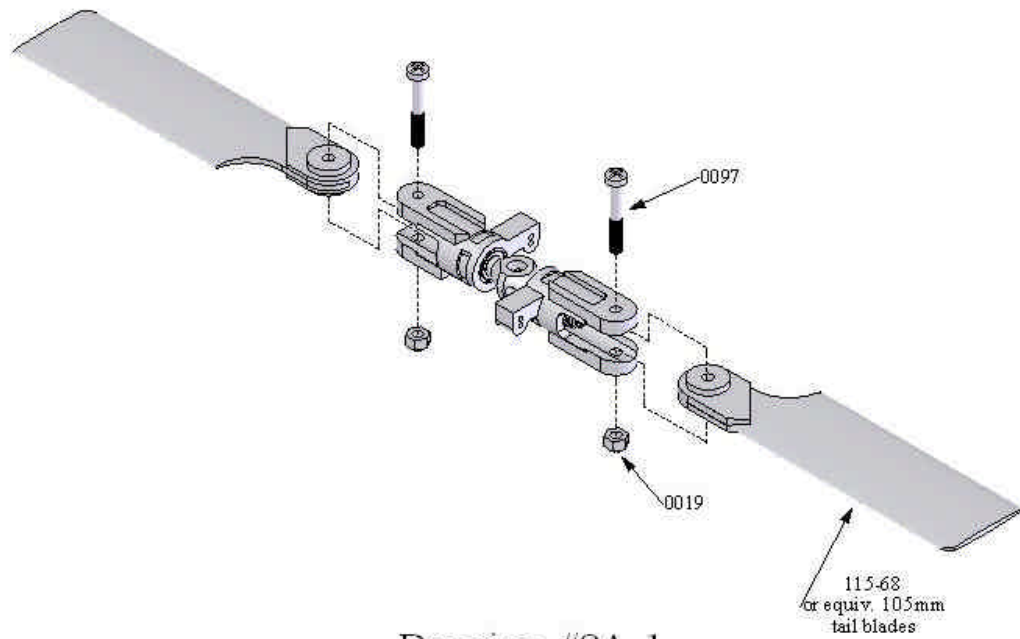
Drawing #7A-1



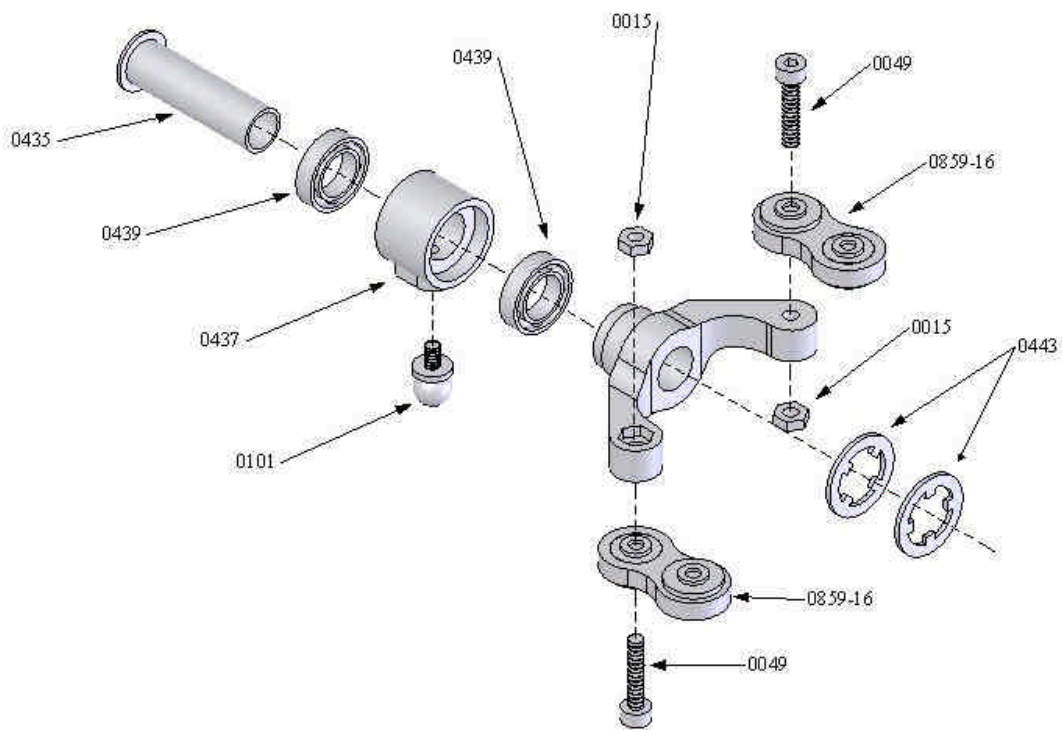
Drawing #7  
Completed



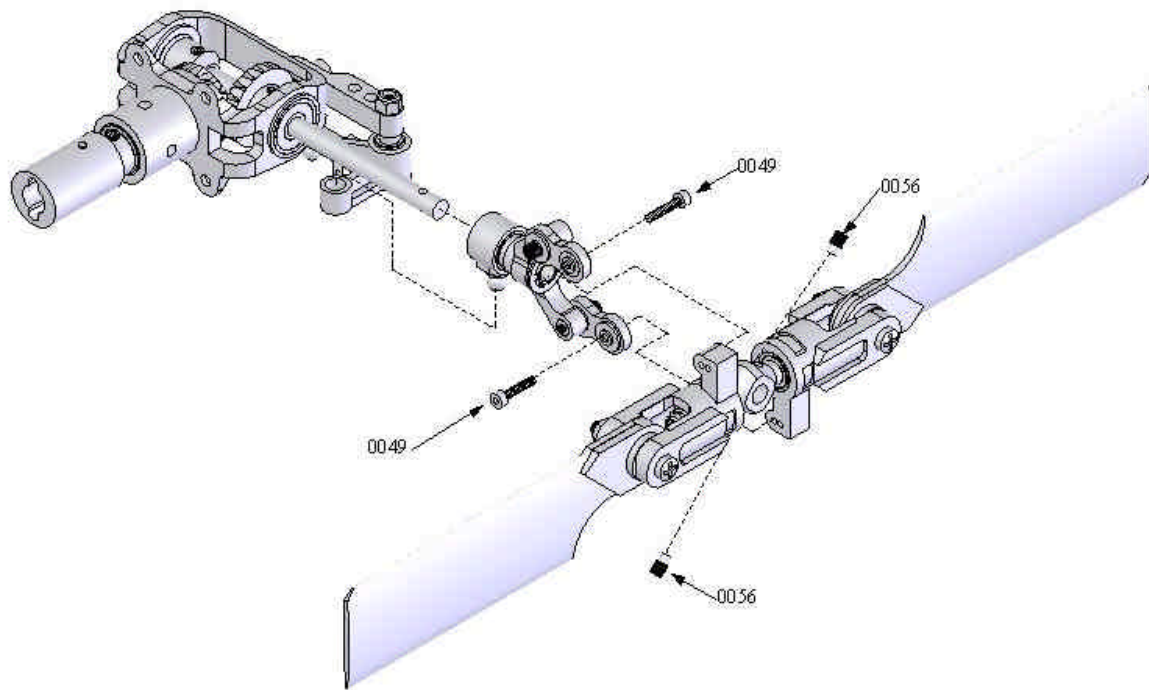
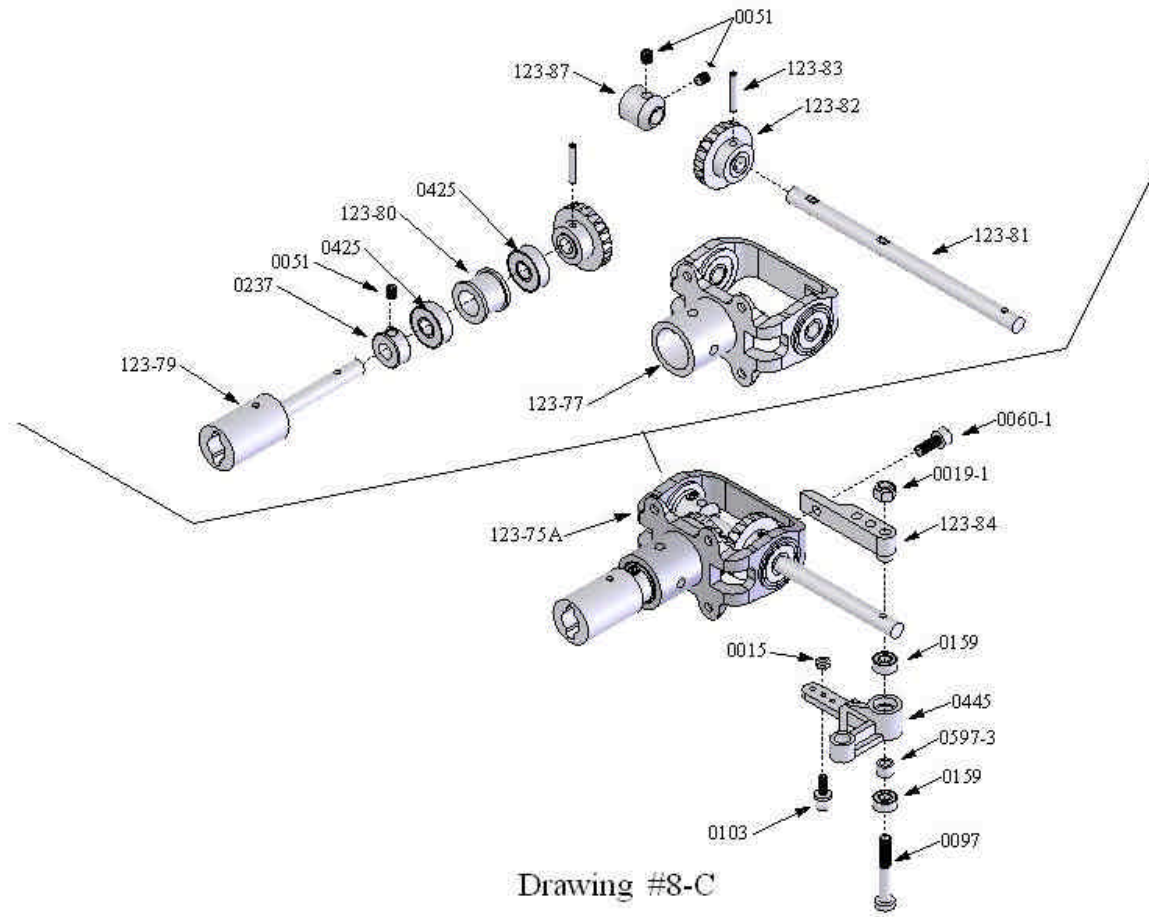
Drawing #8A

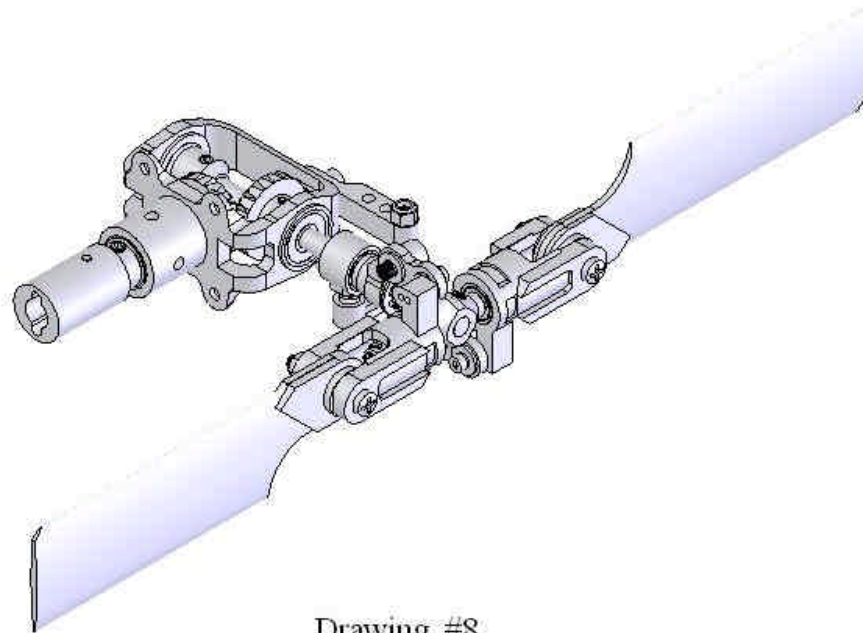


Drawing #8A-1

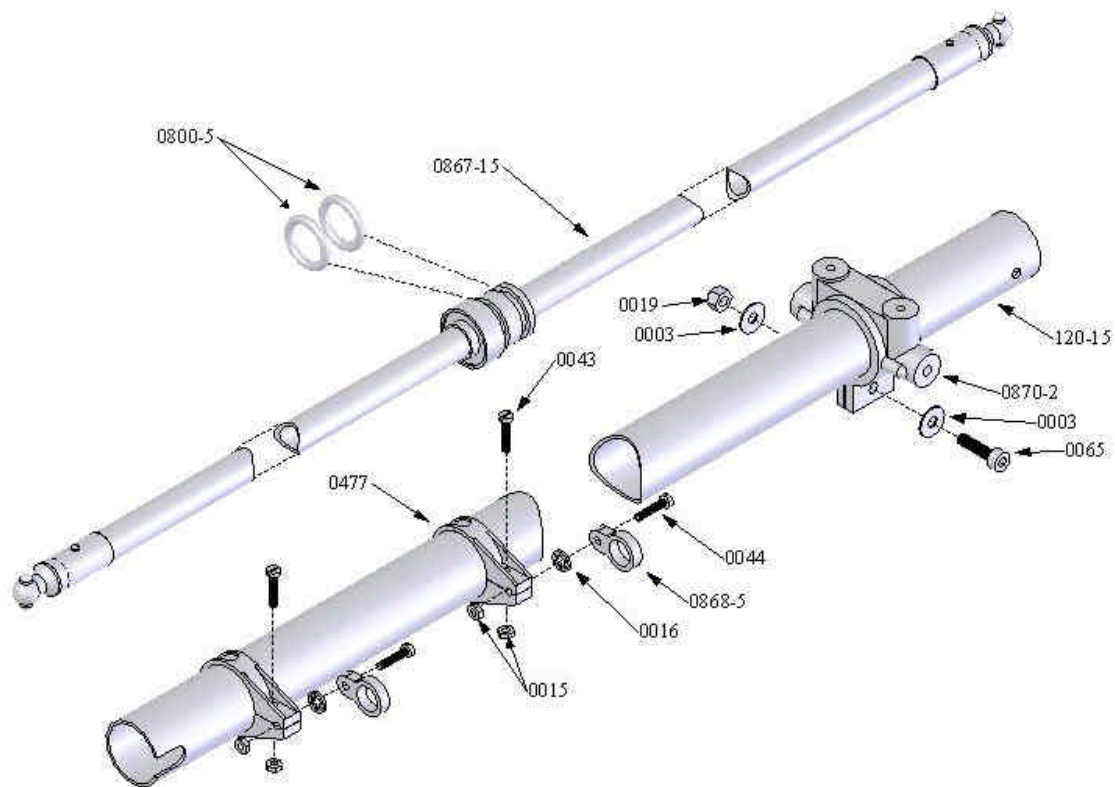


Drawing #8-B

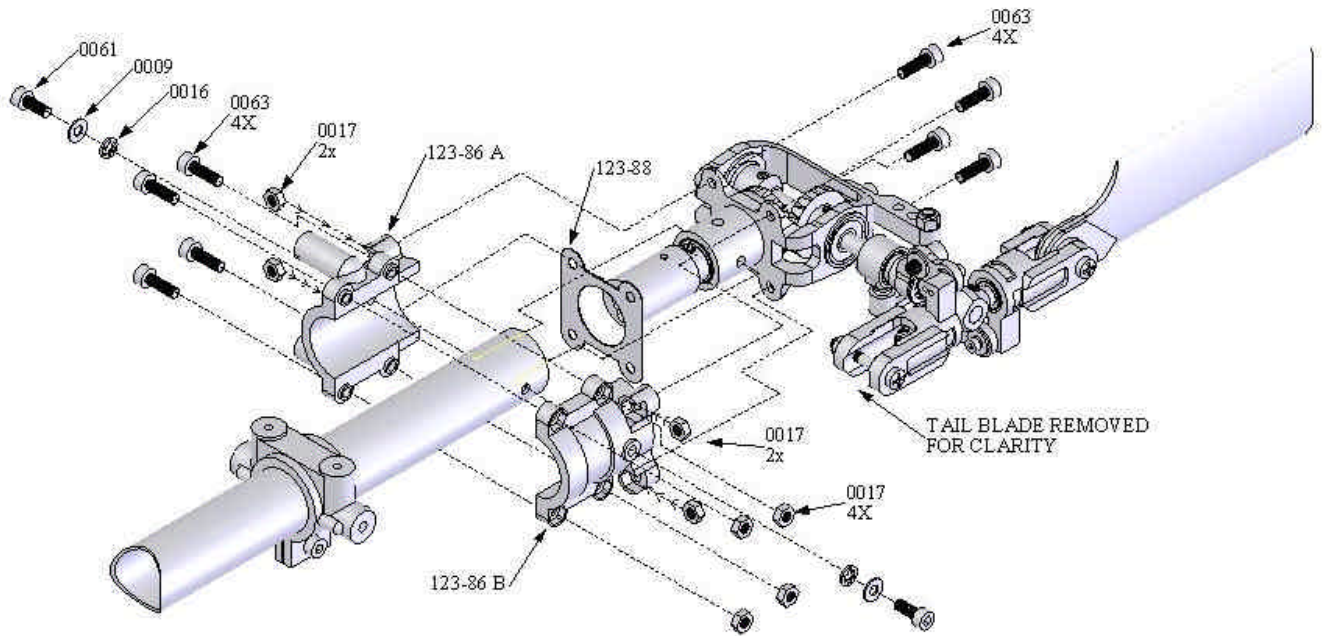




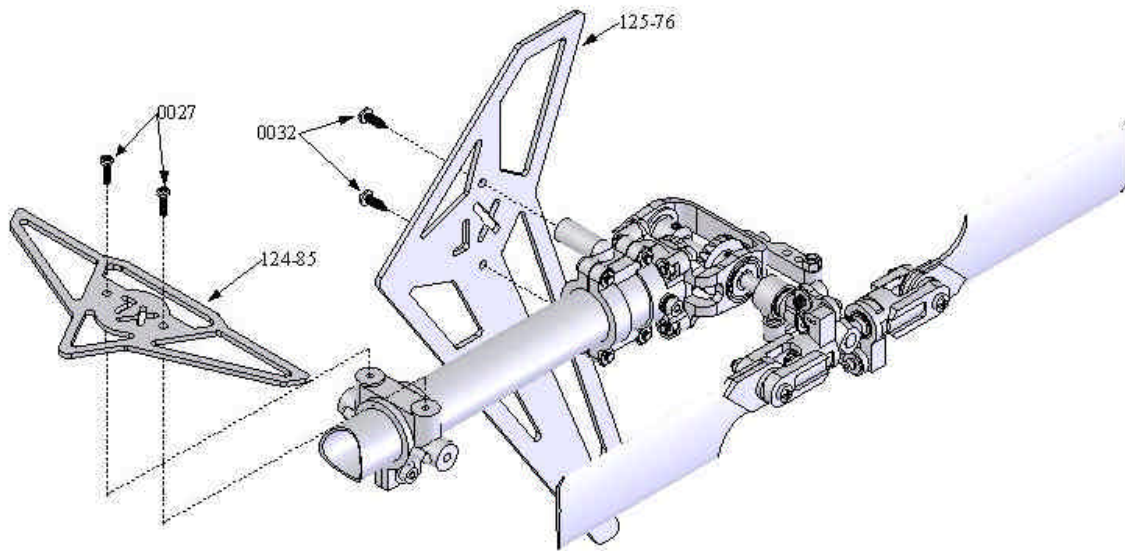
Drawing #8  
Completed



Drawing #9-A

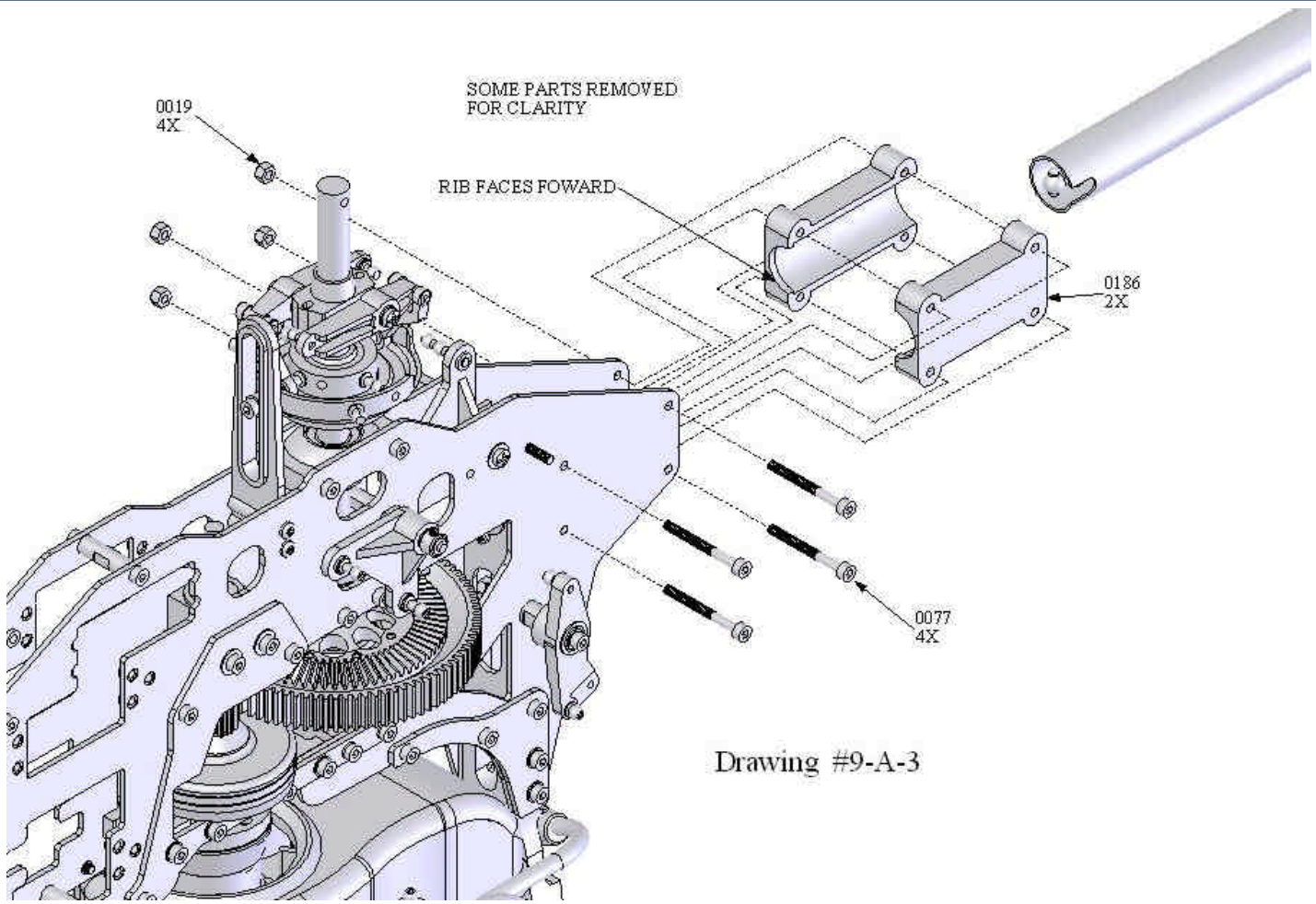


Drawing #9A-1

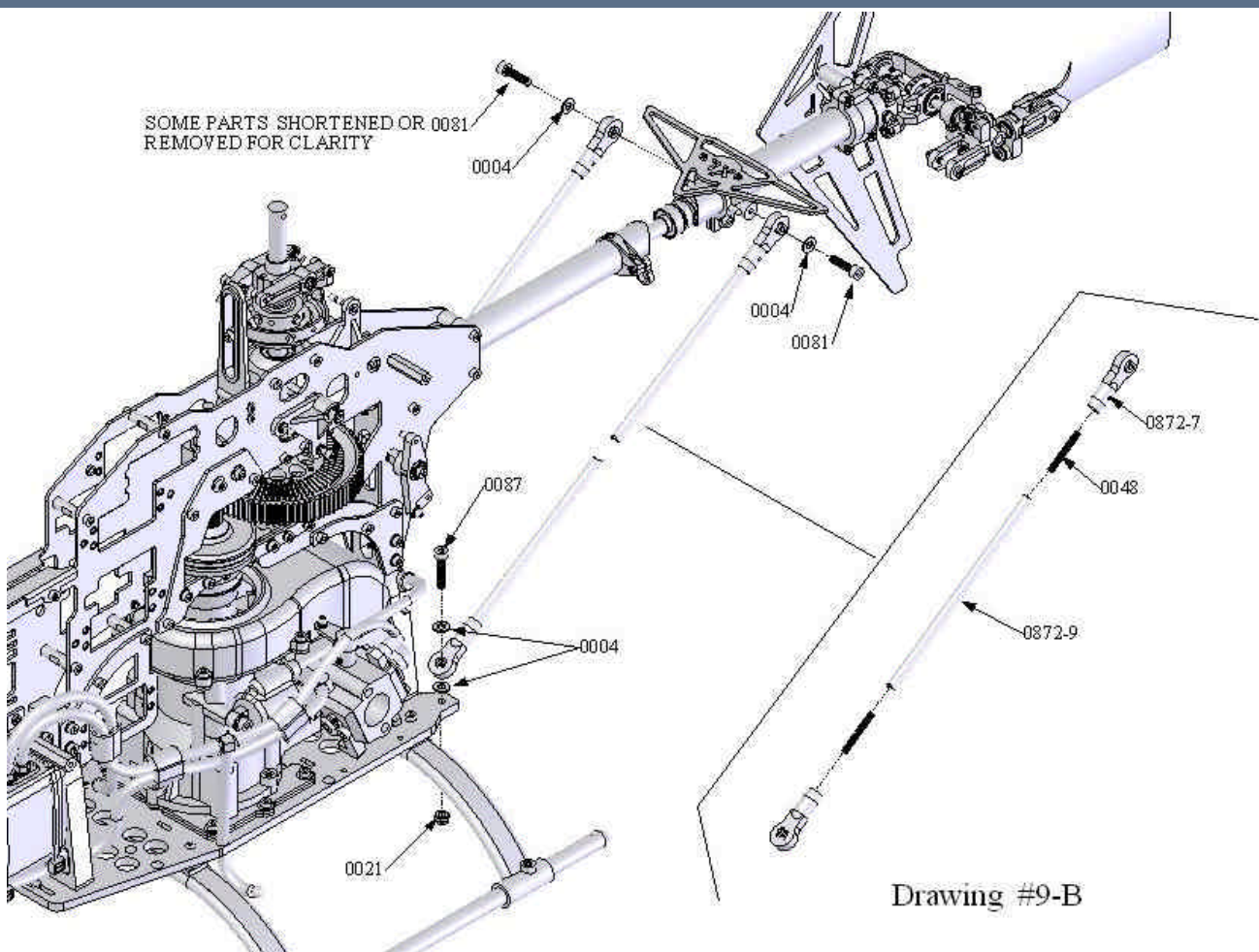


Drawing #9A-2

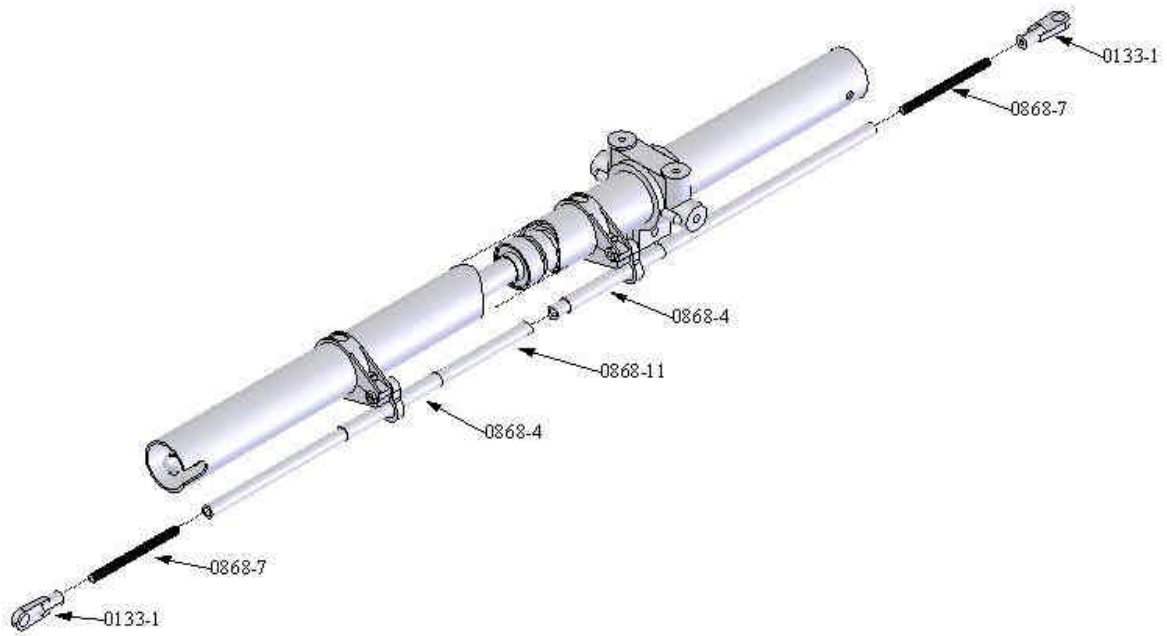




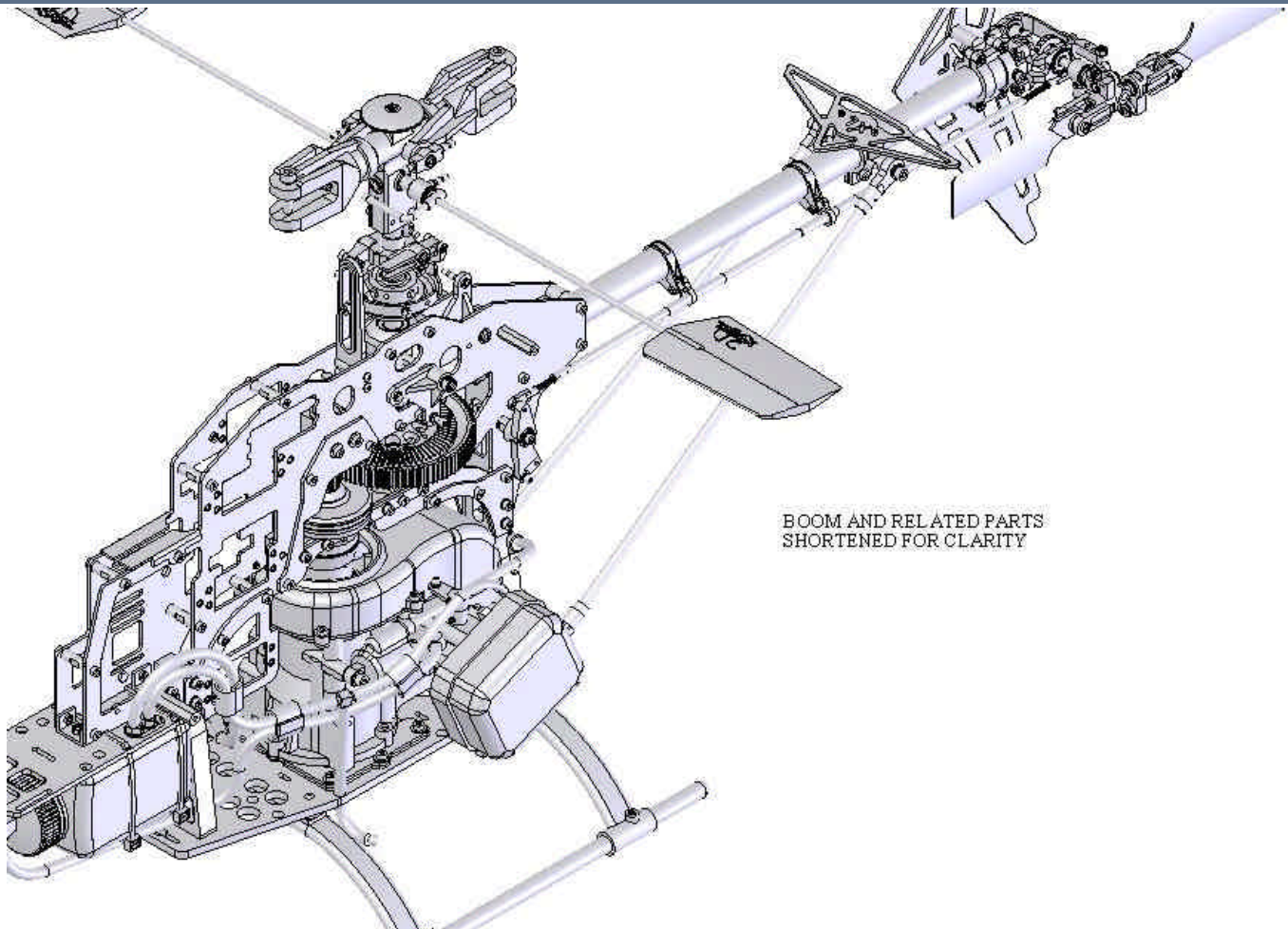
Drawing #9-A-3

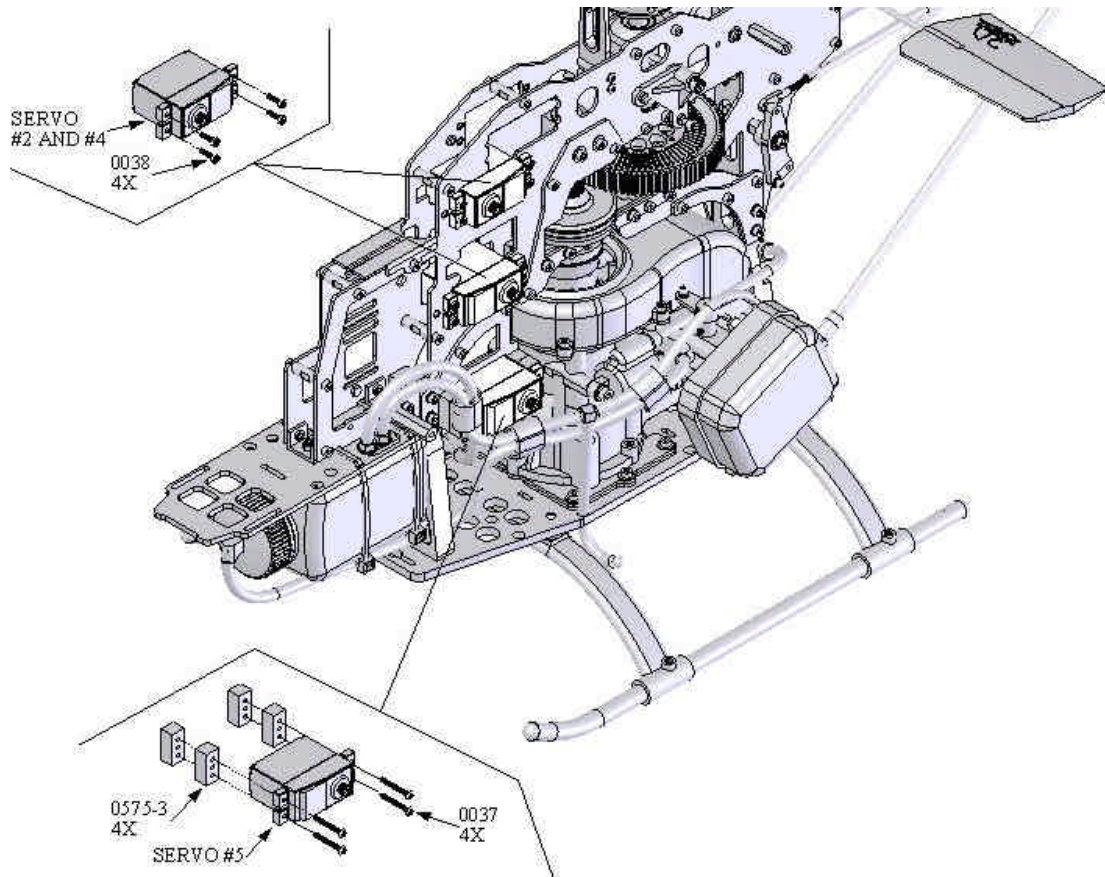


Drawing #9-B

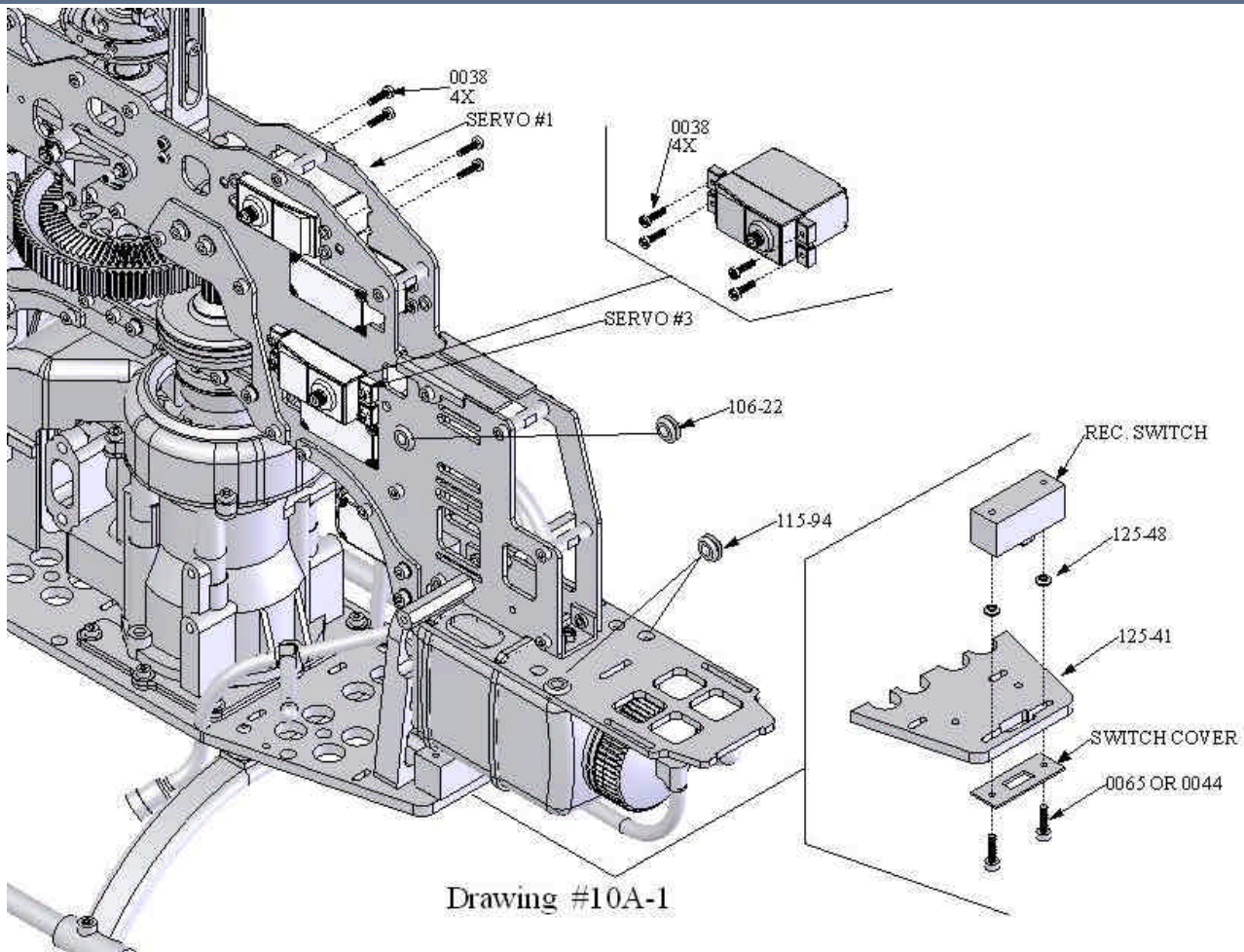


Drawing #9-C



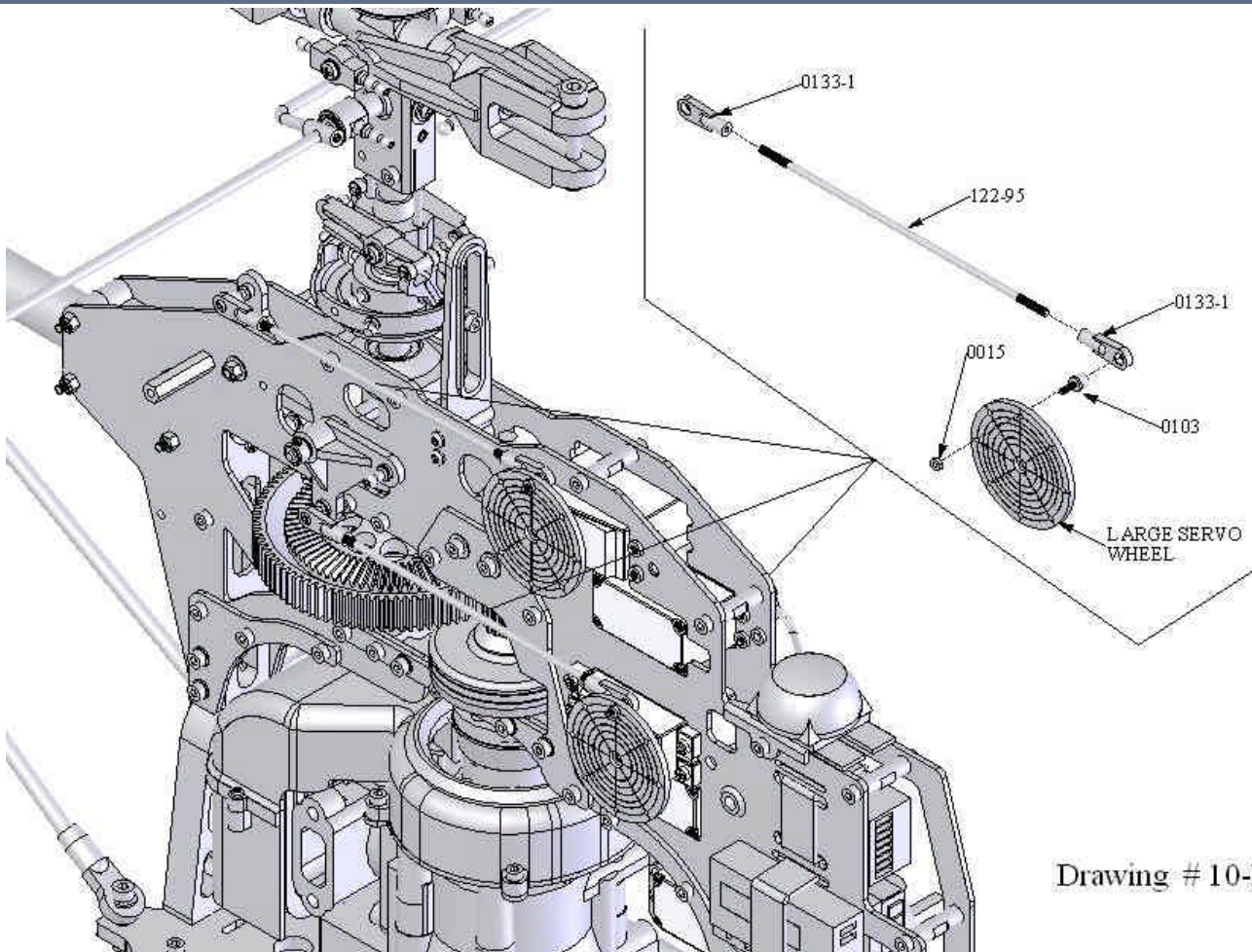
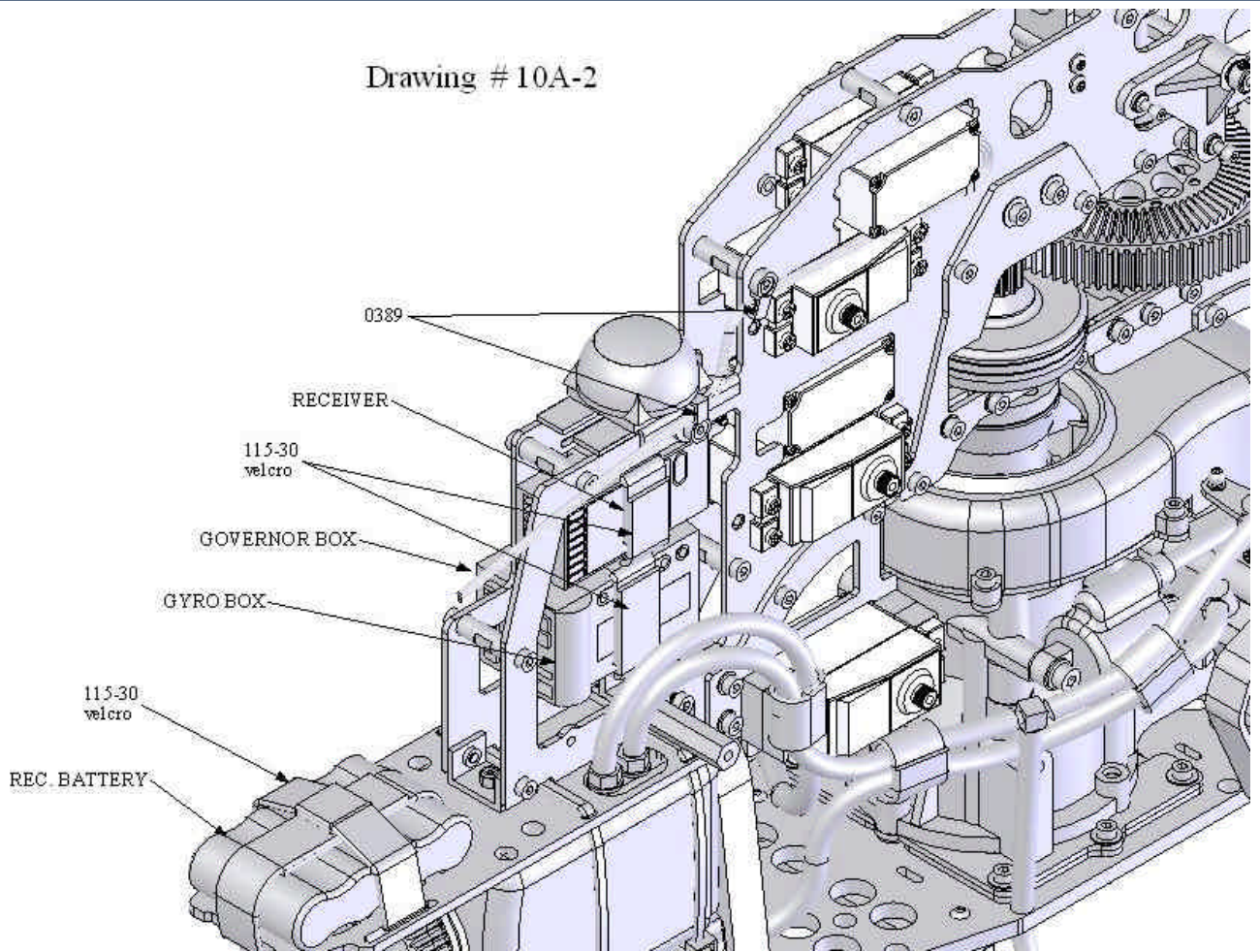


Drawing #10-A

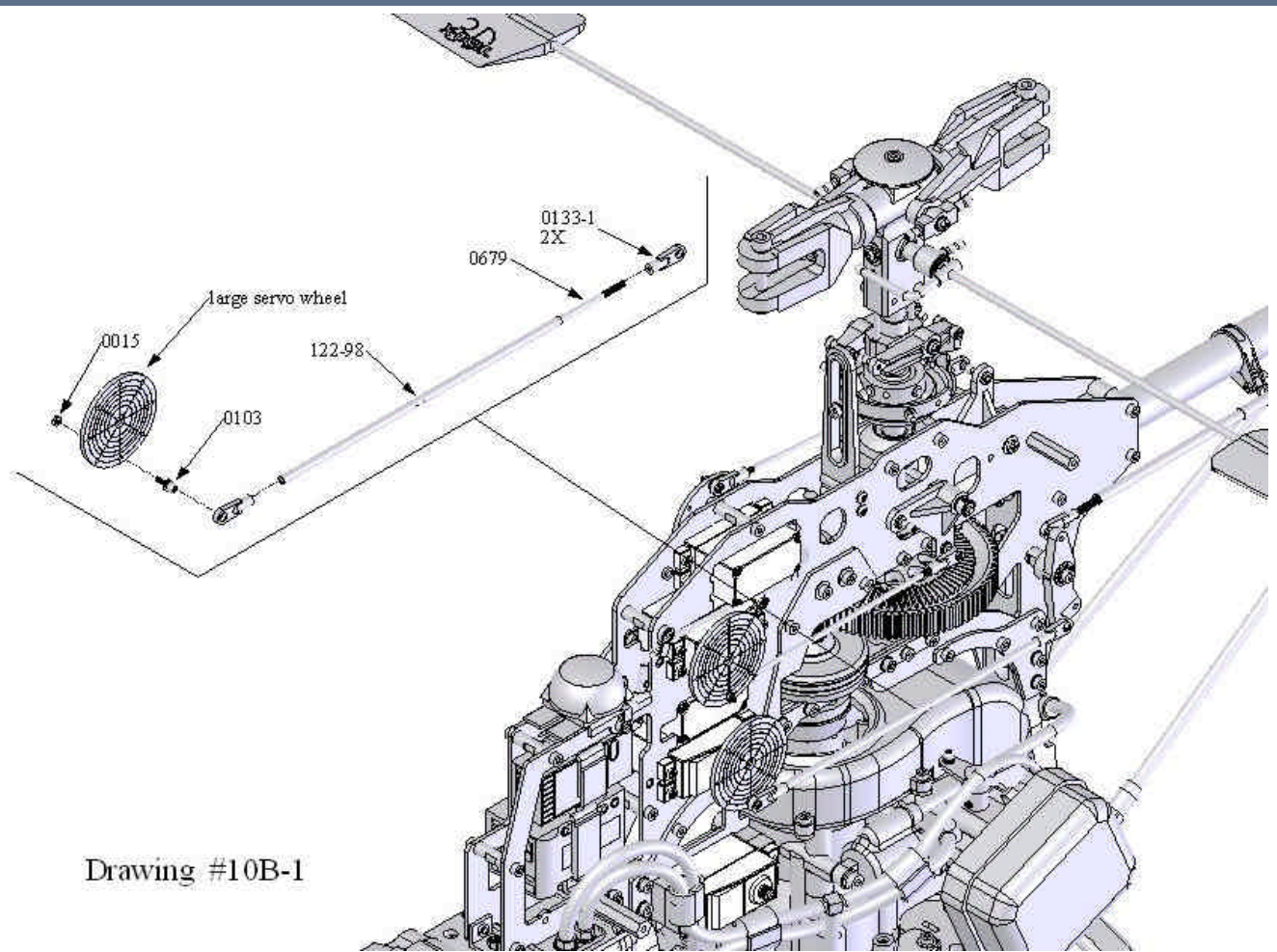


Drawing #10A-1

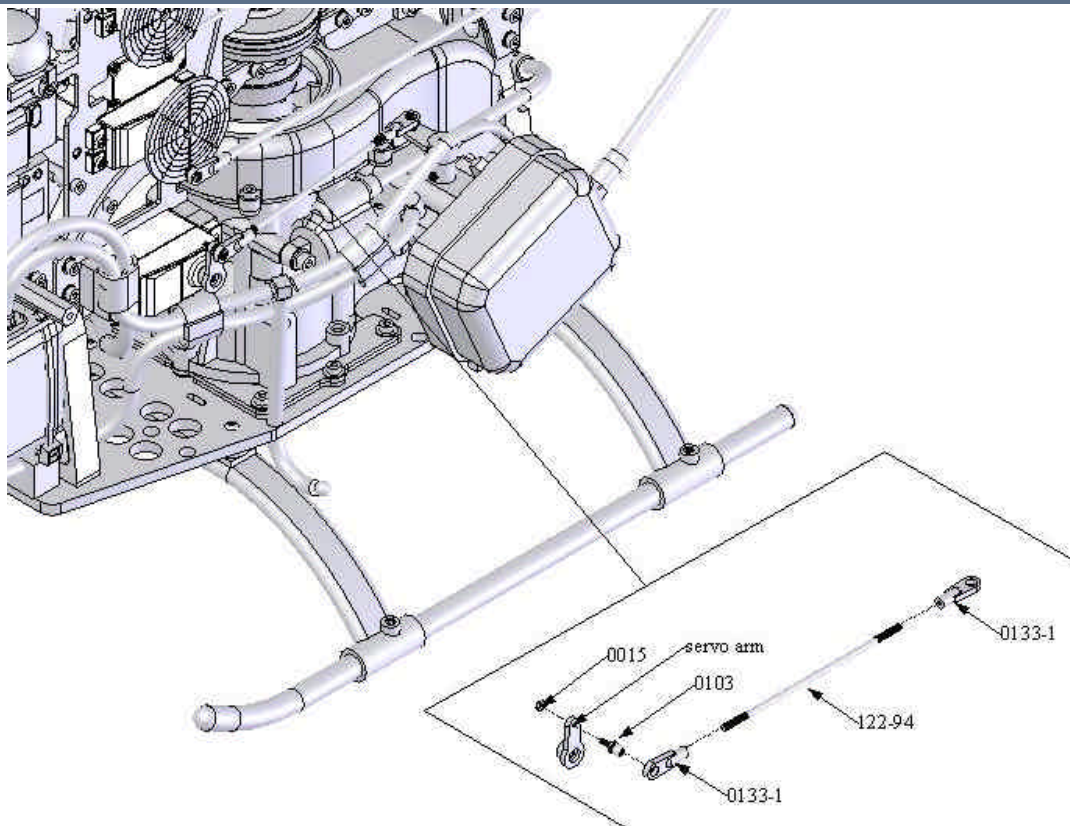
Drawing # 10A-2



Drawing # 10-B

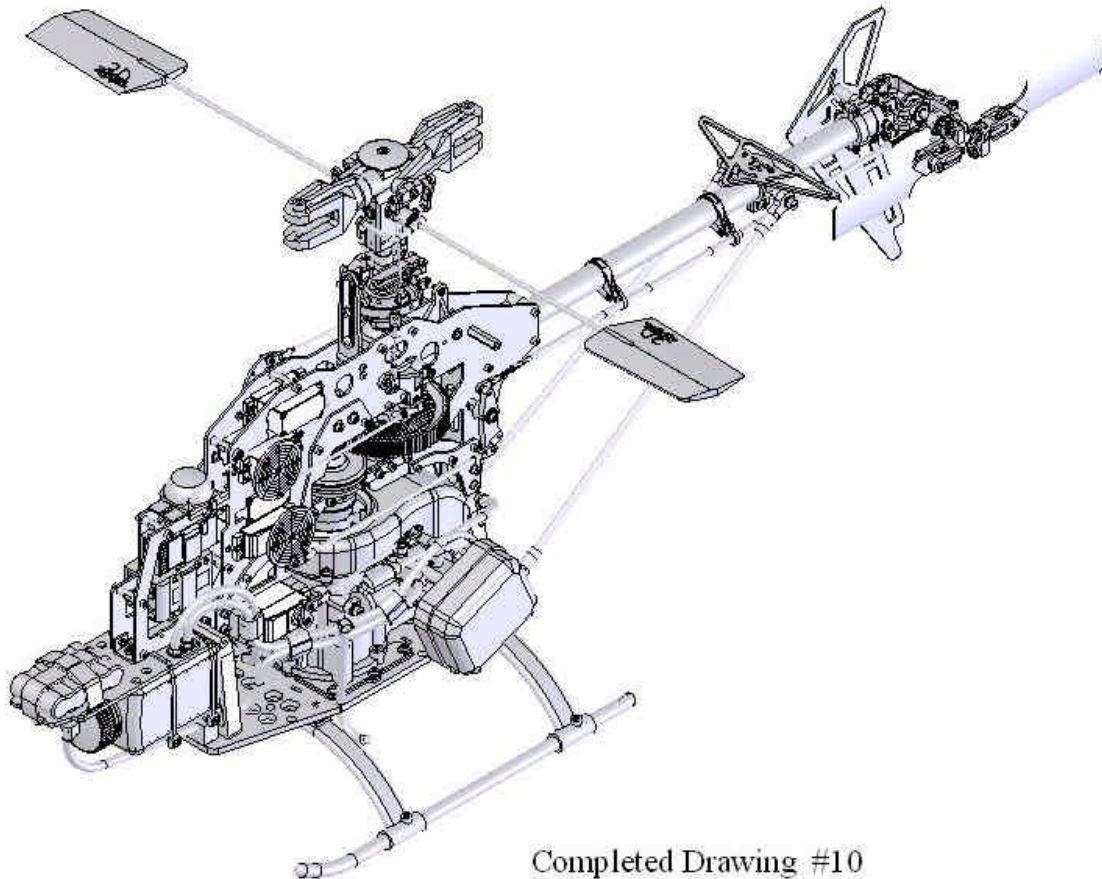
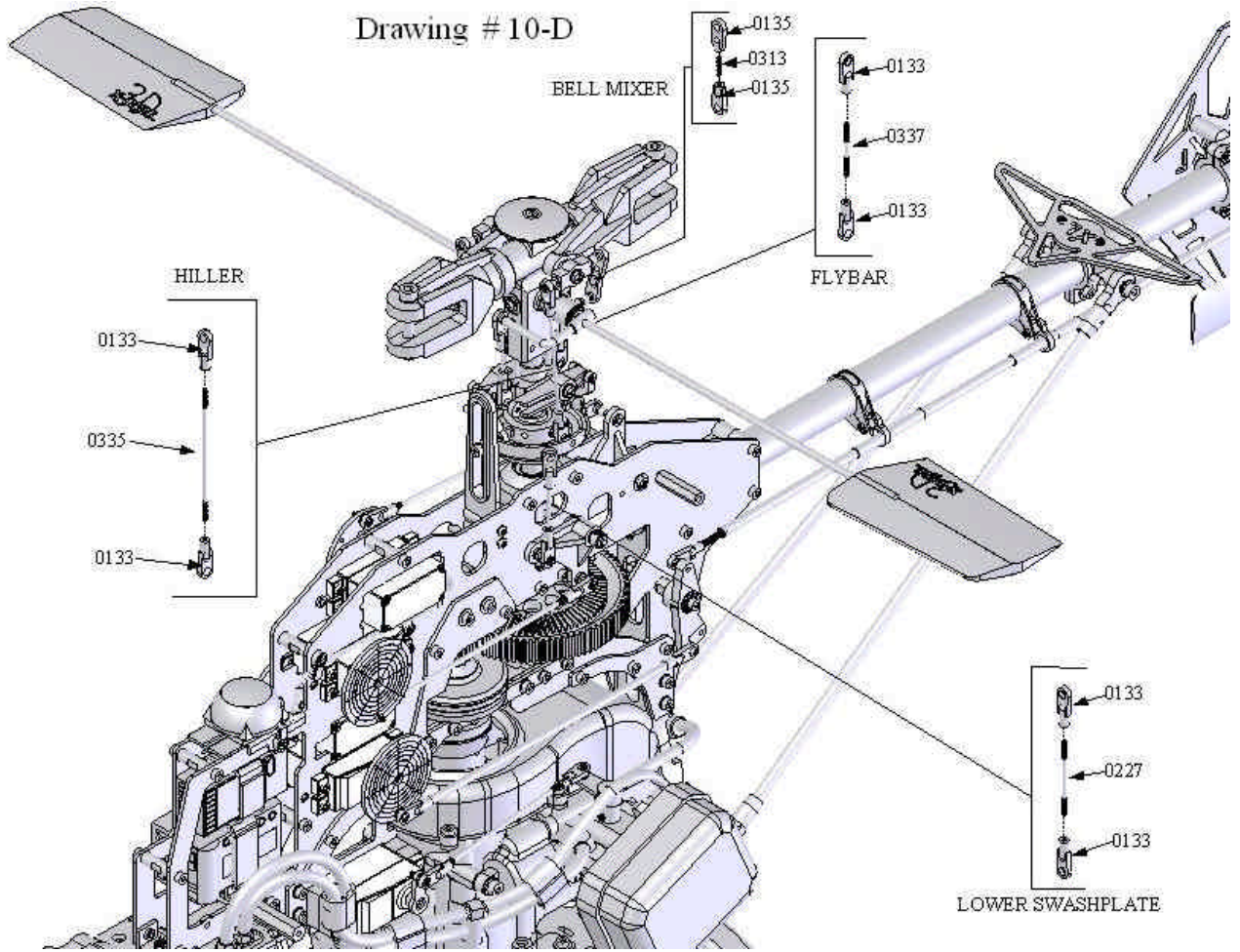


Drawing #10B-1

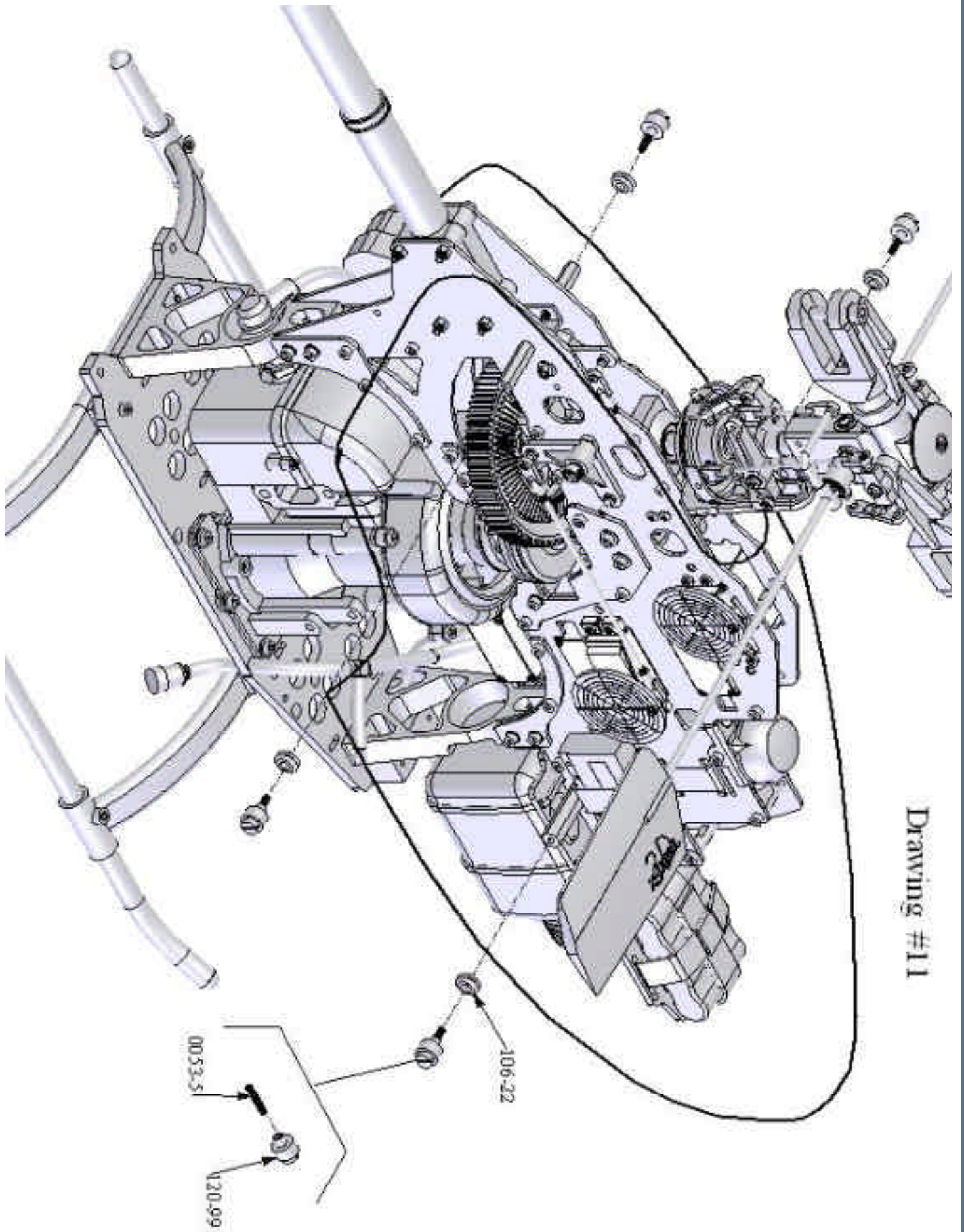


Drawing #10-C

Drawing # 10-D

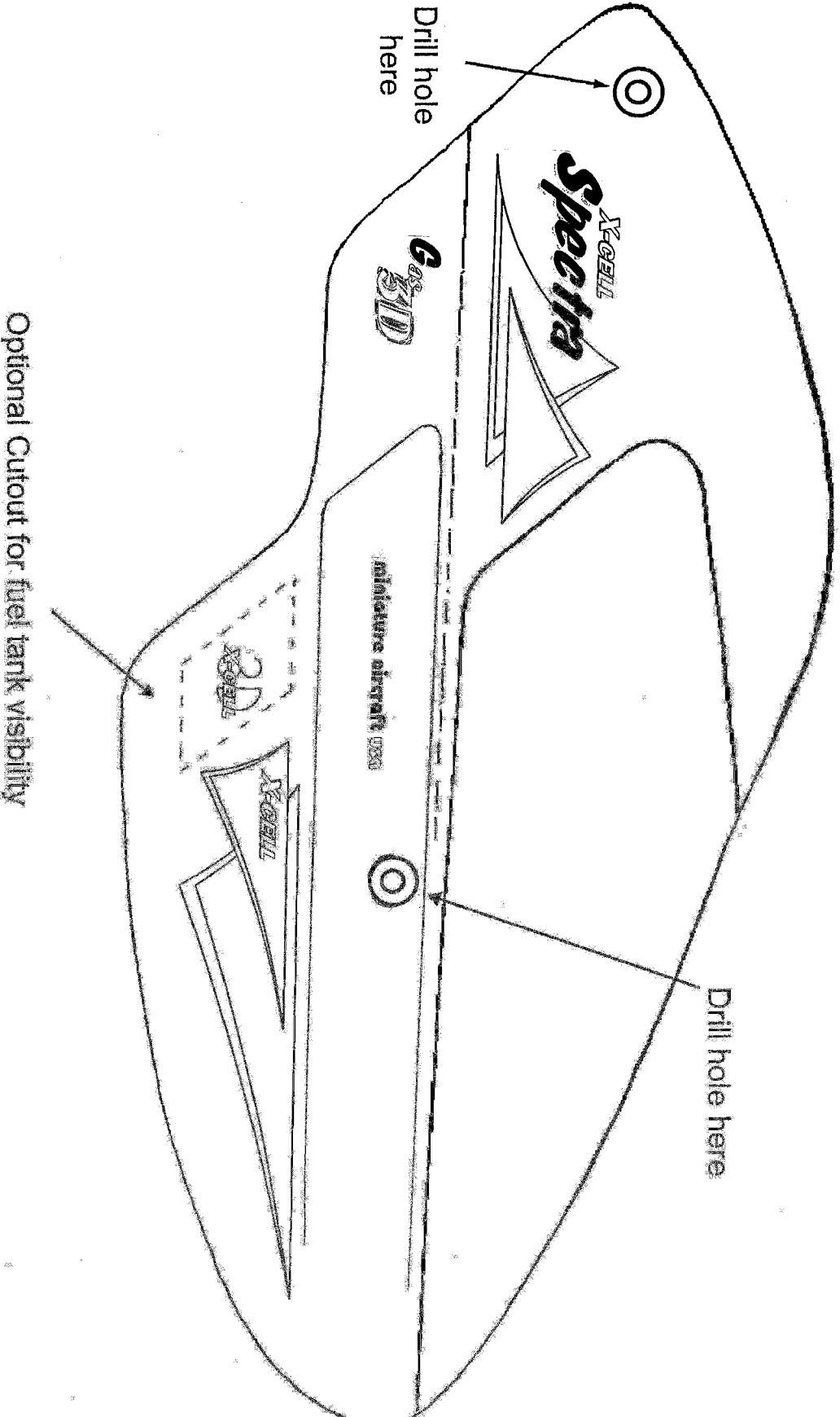


Completed Drawing #10



Drawing #11

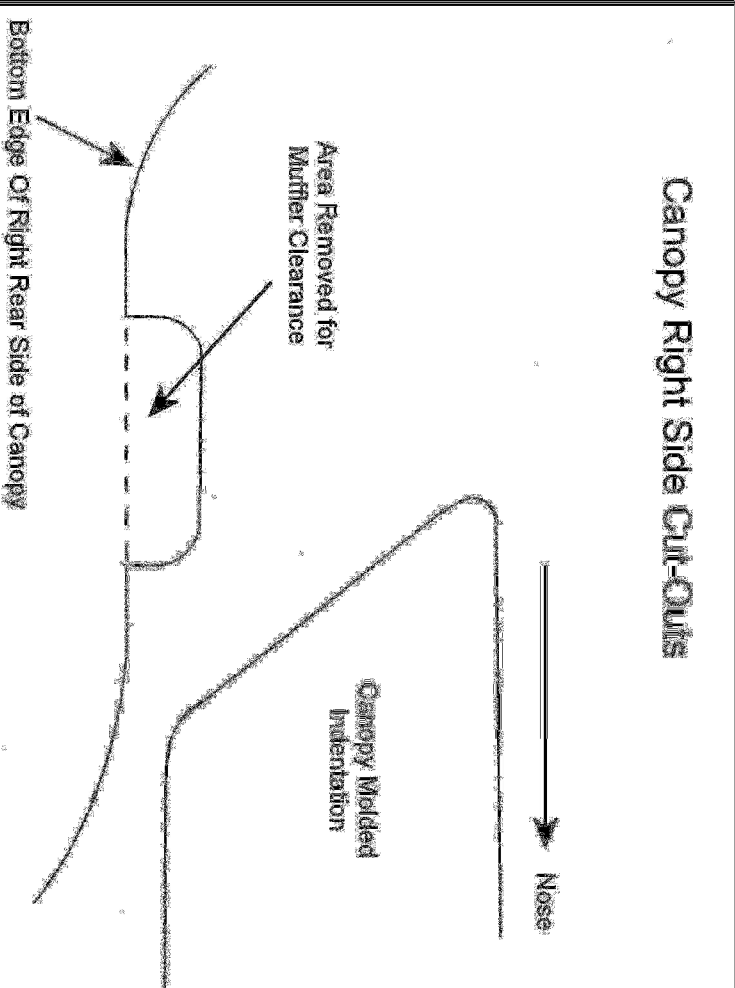
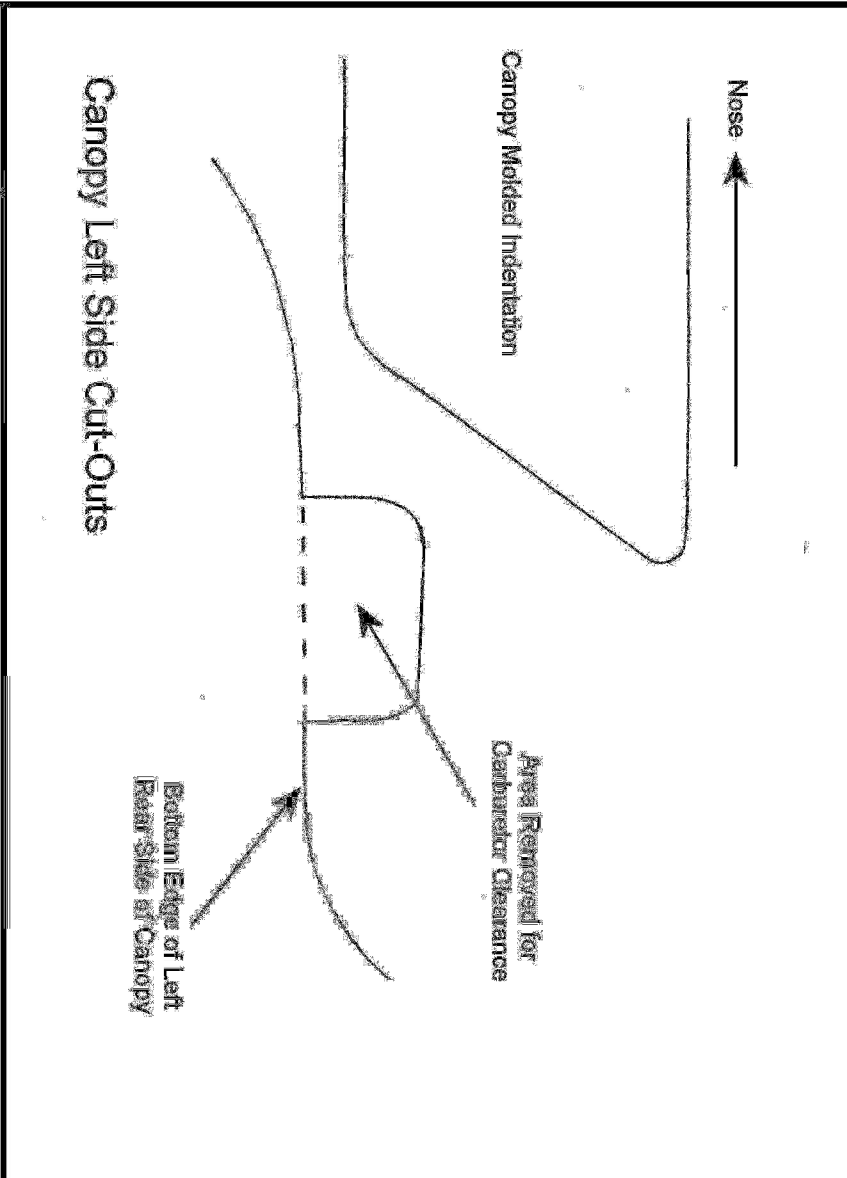
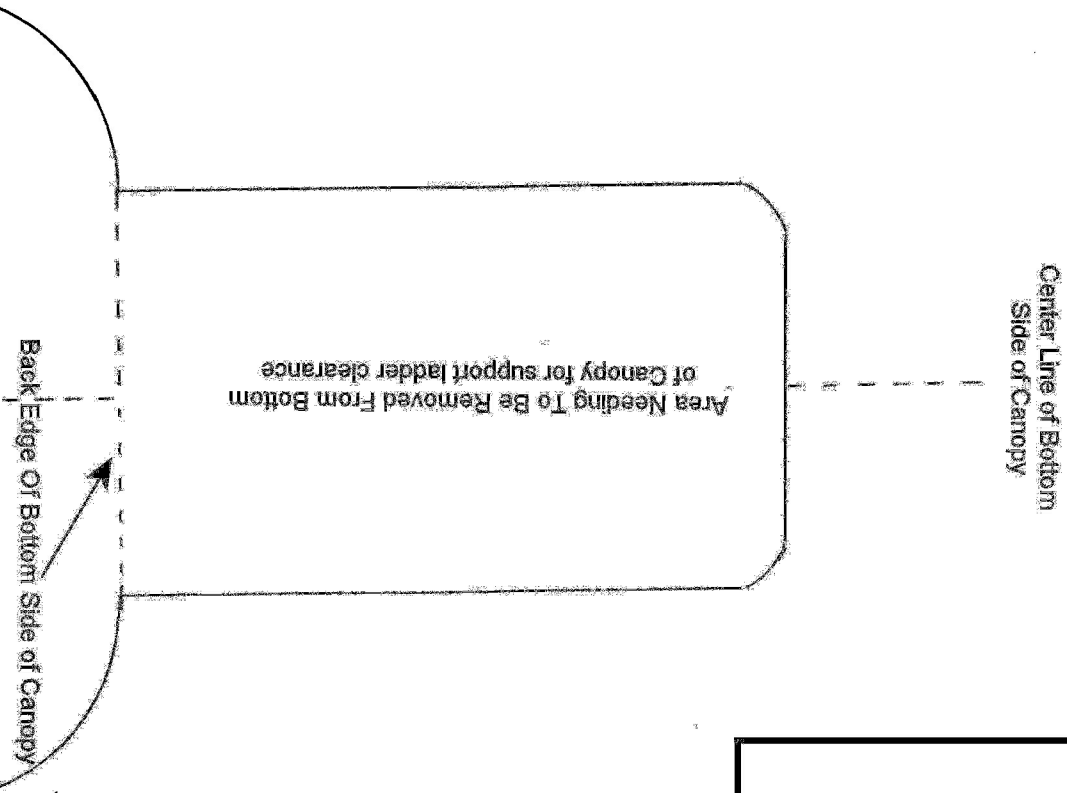
Suggested Locations For Decal Sheet





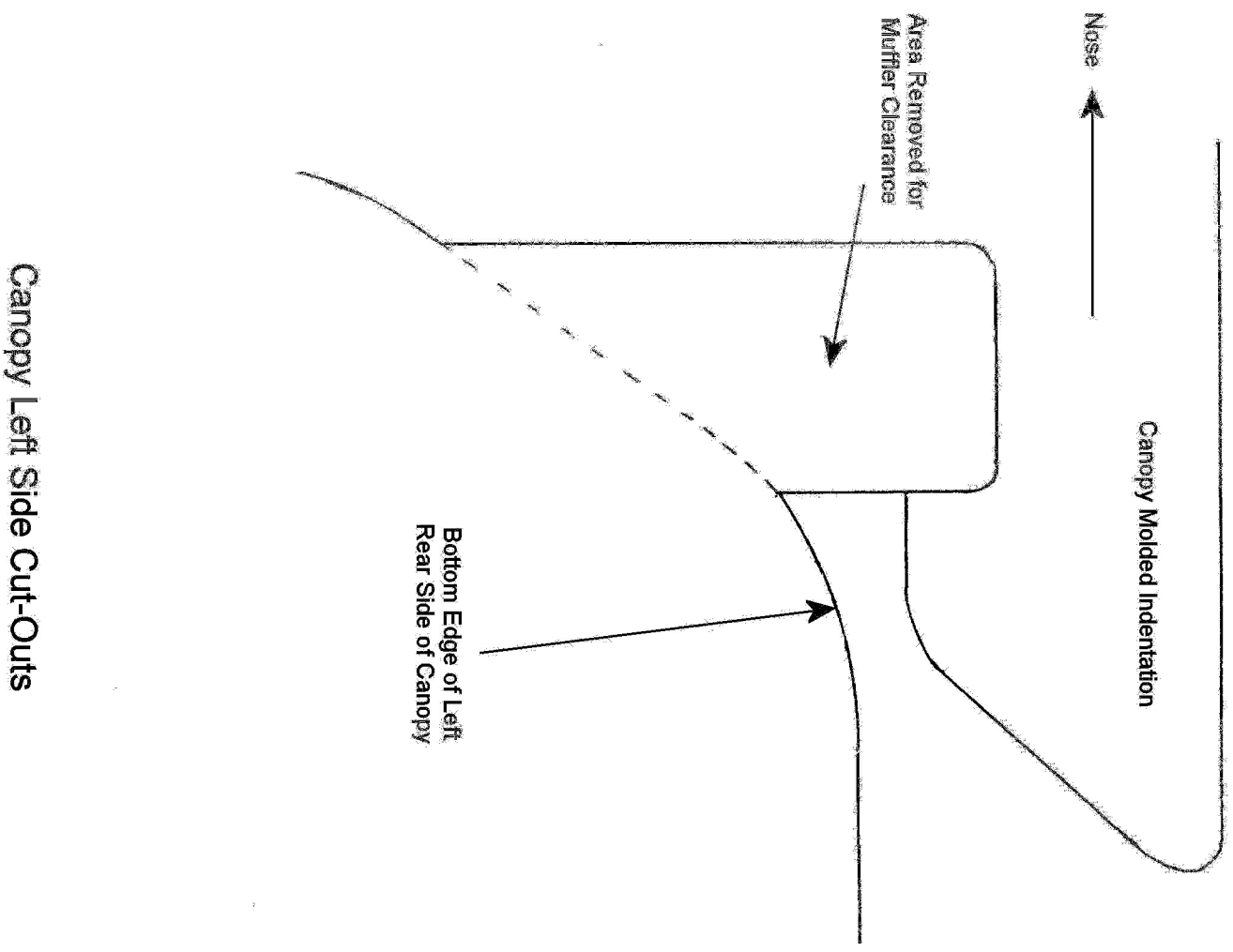
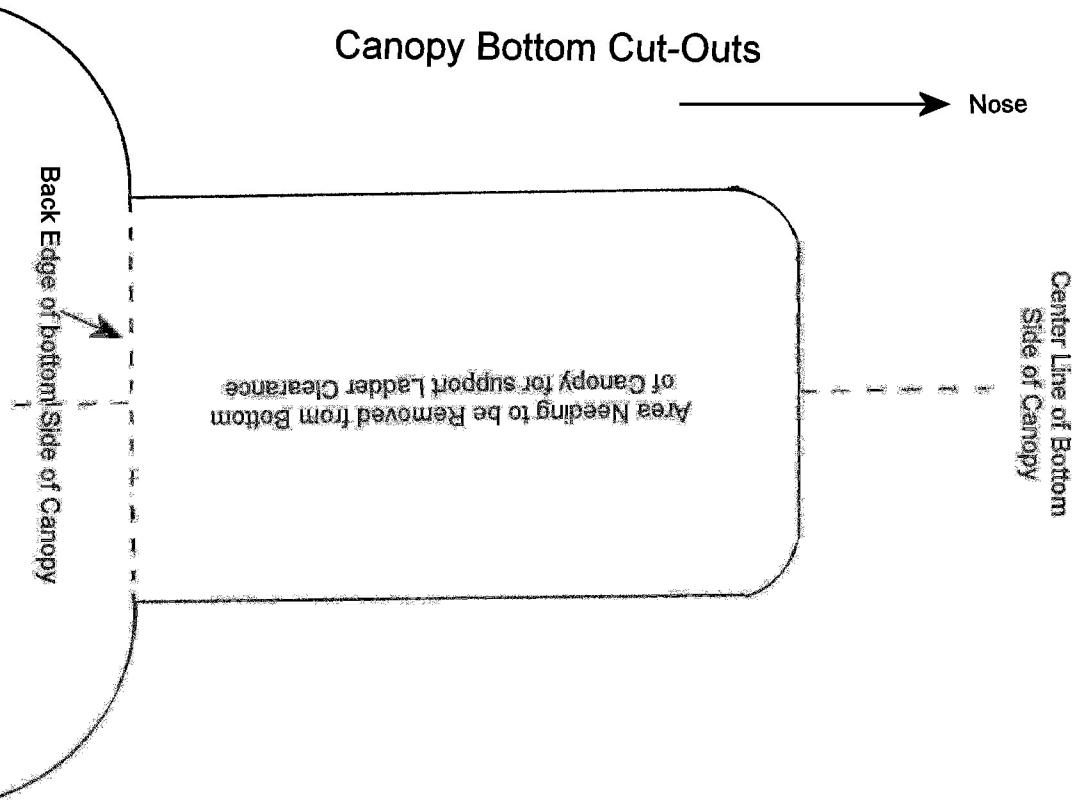
# Canopy Cut-Out Positions for Rearward Facing Motor Installation

Scale - 1:1



Canopy Bottom Cut-Outs

# Canopy Cut-Out Positions for Forward Facing Motor Installation Part A - Scale 1:1



Canopy Left Side Cut-Outs

# Canopy Cut-Out Positions for Forward Facing Motor Installation Part B - Scale 1:1

