

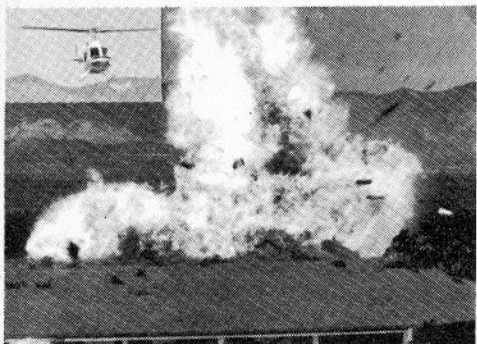


American
R/C Helicopters, Inc.

Decades of Dedication . . .

American R/C Helicopters, Inc. is a full-service manufacturer of remote control models with over 20 years of design and flight experience. We are the only American Helicopter Manufacturer! Complete in-house production and an exceptional staff of highly skilled American craftsmen offer an extraordinary line of products with an unparalleled record of quality and proven reliability. Pioneers in the industry and time honored leaders in the world of r/c American R/C Helicopters offers quality and performance at its best!

As a "true manufacturer" we offer you much more! Each and every component in our highly developed systems is precisely made to match. Because we build the right part instead of looking for one that might work our products have a reputation for durability and have proven to be extremely reliable. Our day to day experience with the very latest developments in materials and technology assures you of the highest level of performance possible. Control over production and subsequent pricing allows us to offer hardware and spare parts on a timely basis at non-fluctuating prices. All parts are American Standard — Not Metric. We keep a large inventory on hand at all times so shipments can usually be made within 24 hours. Quality is the industry's finest — you see we adhere to the most demanding standards — Our Own — and ultimately Yours!



On the Set of Motion Picture "Hanky Panky".

On the Set of Motion Picture "Hanky Panky".
a few of the films where we looped, collided, exploded, caught fire and generally thrilled millions and millions of fans. In the no-nonsense world of studio work performance everything. There is literally no margin for error. We are proud to say that we always delivered, and delivered on que! The continuous request for our special services pays the finest of compliments. Truly a tribute to the unique cooperation between our designers, tool-makers, machinists and pilots. Experience such as this enables us to incorporate the most intricate of design features into sensationally innovative models. A constant working exchange of ideals and recommendations evolve into a finely honed model. Truly state-of-the-art, performance bred models encompassing years of precious experience. The industry's best!

Discover the Difference!

We pride ourselves in our courteous, conscientious service. Our staff of professionals is always ready to help you — be it in some aspect of helicopter assembly, flight, or need for spare parts — help is just a phone call away! So profit by our experience and discover the difference that dedication to product and service can make. We'll be happy to show you just what the best is all about. Products proudly made in America by American Craftsmen!

For Further Information Call or Write:

594 Airport Road ★ Oceanside, California 92054 ★ (619) 439-5454



THE AMERICAN EAGLE

Beyond State-Of-The-Art!

☆☆☆

The Eagle from American R/C . . . destined to become a legend! State-of-the-Art Technology, coupled with Masterful Design at the hands of "movie magician" John Simone, has come together in the form of an all new .60 powered r/c helicopter that promises to shake-up the industry! Gone are the days of the import. American ingenuity and competitive spirit return, and return to stay!

The Helicopter that Includes All the Extras!

The Eagle offers more than you ever thought possible at one low price. This is a machine designed expressly for competitive flight. Virtually every consideration has been given to performance. Quality and Reliability taken to the limits to insure dependable operation under the most demanding conditions. Truly this is a helicopter that can take you to the very edge of your capabilities and bring you back — again and again! The Eagle from American R/C: You've waited a long time for something like this . . . The Wait is Over!

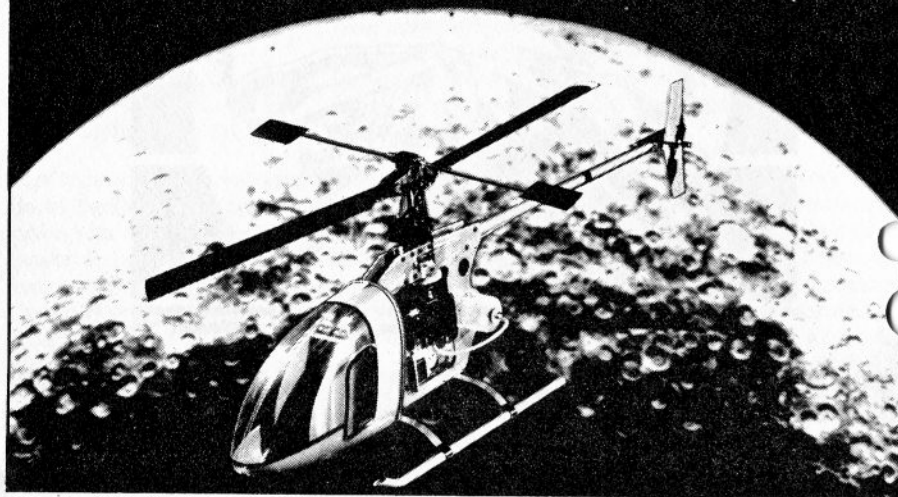
SOME OUTSTANDING FEATURES INCLUDE:

- ★ .61 Powered with Axial Cooling System
- ★ Unique Rotor System with Balanced Blades
- ★ Tail Rotor Shaft-Drive System
- ★ Cone Start System (adapts to **LOK-n-START™**)
- ★ Comprehensive Step-by-Step Manual complete with Photos and Set-Up/Flying Instructions!
- ★ Autorotation Capability
- ★ High Altitude/High Performance Ready
- ★ Shielded Bearings Used Throughout
- ★ All American Standard Hardware
- ★ Full Size Main Plan Included

☆ **THE AMERICAN EAGLE** ☆
The Standard of Performance Has Been Set!

MANTIS

From American R/C Helicopters



Rotor Dia. 41 1/2" / Tail Rotor Dia. 9" / Length 43" / Height 13 1/2" / Weight 6 lbs. / Radio 4 Channel / Engine .40

WE PUT THE THRILL BACK INTO R/C*

... wanted one for years. I am truly amazed by the stability of flight I get from my Mantis. Prior to buying my Mantis I had flown only gliders, yet within 3 days I was making coordinated turns, safe landings and nice long flights. I think the Mantis is truly a great helicopter kit.

GUY ROY, Age 17 - California

It flies great, hovers very well ... I love it very much. Can't wait until I get the new Supermantis. I am sending you a picture ... I hope you like it. P.S. - Keep up the good work. Happy to fly the "American R/C Way".

FRANK R. CASPER, Age 28 - New Jersey

*OUTSTANDING!!! Exceeds all expectations, we use O/S Max .40 ... plenty of power! (after) 4 years flying full-size aircraft, fixed wing, this model put the thrill back into R/C. Look for more orders. ... my friends want one too! All claims of ruggedness gladly confirmed.

CARL P. DEAL Jr., Age 39 - Florida

This is the finest kit I have ever purchased. I have been a modeler for 50 years - I am a tool maker and I know quality. This is the best! You may use this recommendation for advertising.

H.H. MOORE, Age 62 - Texas

I have long been desiring an R/C helicopter. At this cost, yours is a dream come true!

CECIL R. PARRISH, Age 33 - Illinois

For a beginner in R/C Flying I feel you have come up with a real big winner - both in construction and flying. Keep up the good work.

STANLEY A. LEWIS, Age 27 - Florida

... been flying your Revolution I for five years. I know the quality of your products and have been delighted to recommend your machines to my flying friends. Thanks for another fine product that we can all afford!

RUSS RHUE, Age 26 - California

I was surprised at how easy it is to assemble!

PAUL MASTERS, Age 15 - Ohio

FEATURES

- ★ Easy Set-Up and Trimming
- ★ Shielded Bearings
- ★ Fail-Safe Two-Shoe Clutch
- ★ Variable Pitch via Tail Rotor Adjustment
- ★ Full-Size Main Plan and Step-by-Step Instruction Manual with Over 70 Photos
- ★ Contains No Metric Parts - Spares Readily Available at Non-Fluctuating Prices
- ★ Can Incorporate Cone Start and Shaft-Drive Systems



SUPERMANTIS ☆ A PROVEN PERFORMER!

With thousands of dollars and hundreds of hours in production at stake you don't take chances. You get the best. Proven experts in the field of precision r/c flight. Trendsetters in the development of state-of-the-art models. American R/C Helicopters.

A team of American R/C personnel constructed and flew the models that appeared in some of the most exciting footage in the movie hit *Blue Thunder* - but you had to look hard to spot them - They Were That Good!! Truly a tribute to painstaking craftsmanship and pride in performance.



This very same dedication to performance goes into each and every kit we sell! Our vast experience has led to the manufacture of the industry's most successful model. The very latest technology, finely tuned by the highest level of quality control has resulted in a product line that is incomparable in dependability at an unbeatable price. Technical assistance, immediate parts availability and extremely professional and courteous service make for the very best! Discover the difference pride in performance can make. Fly Supermantis from American R/C.

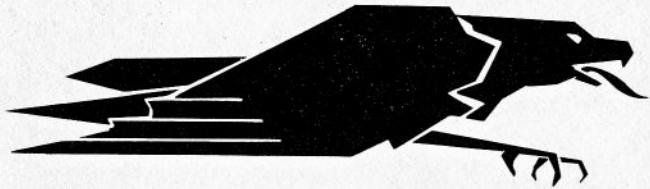
You Don't Have To Spend A Lot To Own The Best!

SUPERMANTIS

Just ask Curtis Croker and his father George. They both flew 8 month old, stock Supermantis Helicopters in the first Schluter West Coast Helicopter Contest - and as you can see, did quite well! George finished 3rd in the expert class as young Curtis showed his father just how it should be done, capturing 1st place with his .40 powered Supermantis as he defeated a competitor flying a .60 model.



Discover for yourself the difference time-proven quality can make ... Fly American R/C - The Industry's Leaders in Innovation with Trendsetting Design and Ultra-Performance!



MANTIS/SUPERMANTIS FACT SHEET

These fine kits are ideal for any modeler who wants to experience the singular excitement of r/c helicopter flight. Attention to design, with careful consideration to performance has led to the development of a helicopter line that provides great flexibility for the modeler, allowing him to select the helicopter set-up that most suits his particular ability and flight requirements. American R/C . . . the Company that offers You a Choice!

DRIVE SYSTEMS – BELT OR SHAFT-DRIVE? Our kits are truly unique, in that they provide the modeler with a choice of drive systems. **The very first helicopter to do so!** Each system has its own merits. **The Belt Drive** is ideal for beginning flyers. Costly damage can be avoided by the use of this system. A common accident among novices is the tail rotor ground strike. Totally devastating to shaft-drives and transmissions, this accident usually causes minimal damage to belt systems. The cost to repair the belt drive system is far less than that one would experience with shaft-drive replacement. Something the novice will readily come to appreciate. The tail rotor belt drive system allows upwards to 60 hours flying time before belt replacement is necessary.

As the flyer gains confidence and skill he can simply upgrade to the **Shaft-Drive System**, a highly developed assembly that is extremely responsive and remarkably quiet. The smooth instantaneous transmission of power it provides is something the experienced pilot will really appreciate as he takes his model to the very limits of his skill. **So which system is right for you? Give us a call, we'll be glad to discuss your situation and offer our recommendation!**

FIXED PITCH OR COLLECTIVE? – A major consideration important in purchasing an r/c helicopter is whether to acquire a **Collective or Fixed Pitch Version**. Just what is the difference anyway? Simply stated; In Fixed Pitch the blades of the helicopter are attached in an **adjustable, pre-determined position**, and the **helicopter uses engine rpm** only to control lift-off and landing; while **Collective Pitch** incorporates **actual blade pitch variation during flight**, along with increasing and decreasing engine rpm.

For the beginning rotary wing flyer, our experience leads us to suggest a fixed pitch helicopter for several reasons – one of the most important being cost! These models are generally less expensive to repair, operate, and maintain, as well as being easier to set-up. The Mantis is ideal in that it provides the simplicity of fixed pitch while offering the option of upgrading to collective – **the only helicopter on the market today that actually adapts to your increasing skills!** Once you have mastered forward flight, for a modest cost, our **Collective Pitch Conversion Kit** transforms your Mantis into a Supermantis, and provides you with a machine that will enable you to explore the totally unique thrill of aerobatic helicopter flight!

ROTOR HEAD – Rotor heads in the Mantis and Supermantis incorporate shielded bearing. Our unique dampener system in the Fixed Pitch Mantis allows you to perform aerobatic flight, such as loops and rolls, without the aid of collective pitch. The Collective Pitch Supermantis provides the ultimate in performance – with the economy of a .40 size engine! The Supermantis rotor head is a Bell/Hiller combination, providing quick response and enabling skilled performance of even the most difficult maneuvers.

ROTOR BLADES – Yet another unique feature on both the Mantis and Supermantis is the **perfectly matched (within .05 gram) rotor blades** and their **special covering material**. Attention to detail in this area enables you to easily balance your finished blades with the simple application of a strip or two of trim tape added to the lighter blade.

THE MAIN FRAME – Our helicopter sideframes are injection molded of space-age materials. They are **virtually indestructible!** Unlike metal frames that fatigue, crack, and bend, our sideframes can withstand excessive abuse without damage. In fact **we guarantee** to replace, without cost, any **unsuable sideframes**, providing they have not been modified.

HARDWARE – All hardware is plated to prevent rust and corrosion. It is American Standard Size – **Not Metric!** – and readily available, as are all of our parts, at non-fluctuating prices!

BEARINGS – Shielded ball bearings have always been utilized in the Mantis and Supermantis. They provide countless hours of trouble-free service along with precision and smoothness of flight. Shielded bearings also diminish concern of damage from dust and provide improved maintenance in the form of lubrication.

ENGINE – Standard .40 size engines **which have not been used previously in fixed wing models** are perfectly adequate. The O.S. Max .40 and .45 FSR provide the ultimate performance.

RADIO – Mantis & Supermantis both use a standard 4 Channel Radio. A gyro is not needed.

INSTRUCTIONS – A full-size Main Plan is included with all kits, along with a step-by-step Instruction Manual, complete with over 70 photographs to aid in building. Assembly is easy and fun. Technical assistance, if required, is gladly rendered during regular office hours.

SPARE PARTS – The use of **non-metric hardware** makes many incidental items available right at your workbench. A phone call to us speeds other replacement parts on their way C.O.D. – usually within 24 hours, as most items are manufactured in our facility.

In Conclusion – We take extreme pride in producing a product **designed and manufactured by skilled American Craftsmen**. Our models have given years of enjoyment to literally thousands across the United States and around the World. If you are searching for an economical and dependable model that can be used as a trainer, and eventually take you to the upper levels of contest performance, search no longer. Consider our fine Mantis line from the company that has done more to build the helicopter that is just right for you. . .

– SUPERMANTIS SPECIFICATIONS –

Rotor Diameter 41½" / Tail Rotor Diameter 9" / Length 43" / Height 13½" / Weight 6 lbs.

FEATURES

- ★ Fully Aerobatic Head
- ★ Fail-Safe Clutch
- ★ Mechanical Tail Rotor Compensation
- ★ Shielded Bearings
- ★ Easy Set-Up and Trimming
- ★ Lightweight Construction
- ★ 10 to 12 Hour Assembly Time
- ★ Full-Size Main Plan & Instruction Manual with Photos
- ★ Contains No Metric Parts – Spares are Readily Available!
- ★ Cone Start and Shaft-Drive Systems are Easily Installed/Adapts Readily to Lok-n-Start™

ACCESSORIES/UP-GRADE SYSTEMS

- ★ CONE START FOR MANTIS & SUPERMANTIS ★

- ★ COLLECTIVE PITCH MODIFICATION ★
– Converts Mantis to Supermantis –

- ★ SHAFT-DRIVE SYSTEM ★

– Contains Components & Hardware necessary to Convert Belt-Drive to Shaft-Drive –

REV-O-LUTIONARY!

PRECISION POWER-STARTING



LOK-n-START SYSTEM™

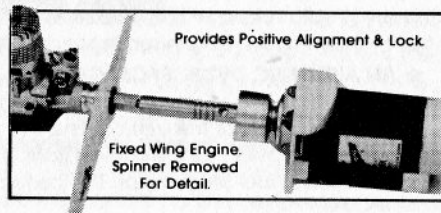
— PATENT PENDING —

The Best Starting System Ever for Fixed Wing Aircraft & Helicopters!

Whether Fixed Wing or Helicopter, conventional starting systems have many shortcomings. The excessive pressure required for starting can lead to slippage, breakage of parts, and injuries. The compression levels of some engines may cause difficulty in starting, and under flooded conditions, starting may be impossible without first loosening the glo plug. Now these starting problems are a thing of the past! American R/C is pleased to present the **LOK-n-START SYSTEM™**. The quicker, more professional way to start your flying day!

FEATURES:

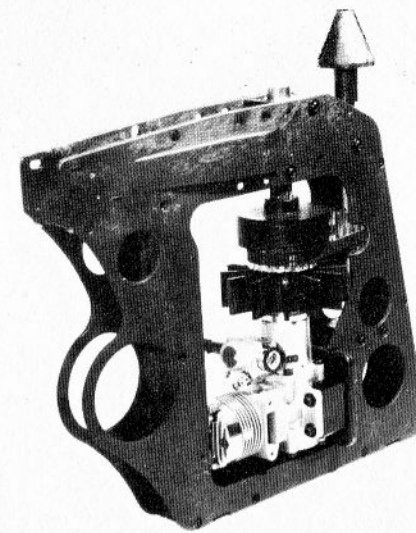
- ★ Fits Most Fixed Wing & Bryon Ducted Fan and Helicopter Cone Start Systems!
- ★ Easy Starting of Engine – Even when flooded Without Loosening Glo Plug!
- ★ Perfect Alignment & Lock between **LOK-n-START SYSTEM™** and the Starting Shaft!
 - ★ System is Absolutely Drag Free!
 - ★ Uses **No Pressure** in the Starting Procedure!
 - ★ Installs and Removes Easily with Common Tools.
- ★ No Set Screws to Loosen or Rubber Starting Inserts to Replace.
 - ★ Far Safer and More Efficient than other systems.
 - ★ Innovative Design and Trouble-Free in Operation!



AIRPLANES
Available for Fixed Wing
Including
Byron Ducted Fan

HELICOPTERS

- For Cone Starts
- ★ Mantis & Supermantis
 - ★ Heim Star Ranger
 - ★ Compeltitor ★ Kavan
 - ★ Schluter ★ Kalt
 - ★ Playboy ★ KKK



★ CONE START SYSTEM ★

Now the convenience of Cone Start with the precision and reliability of American R/C is a reality! True innovation in design has resulted in the development of a remarkable system made expressly for efficient operation and easy installation on your Mantis or Supermantis.

FEATURES:

- ★ No Critical Alignment required as System Operates Independent of Engine
- ★ System is Absolutely Drag Free
- ★ Will Not Rob Engine RPM
- ★ Accepts Lok-n-Start™
- ★ Includes All Necessary Components to Convert Belt System to Cone Start System
- ★ Installs Easily with Common Tools



★ COLLECTIVE PITCH KIT ★

Now you can upgrade your Mantis to the performance capabilities of the Supermantis. With the simple installation of our Collective Pitch Kit you can experience totally aerobatic helicopter flight. This fine conversion kit contains the following hardware:

- ★ All New Head
- ★ Required Linkage
- ★ Hardware
- ★ Blades
- ★ Mixing Arms
- ★ Bushings and Mechanical Tail Rotor Compensation

“Proud to Say”



See Price List for Current Prices



— MasterCard and Visa Honored —



Call for Additional Information:

(619) 439-5454

594 Airport Road ★ Oceanside, California 92054