

Flybarless Rotor Head Conversion KIT

Applicability: No.3925: Titan X50 series (#4855, 4856, 4756, 4757)
No.3926: Raptor 30/50 series (#4839, 485, 4852, 4853, 4854)

No.3925/3926

無平衡翼旋翼頭改裝套件

INSTRUCTION MANUAL

Introduction 簡介

Advised and approved by Thunder Tiger Team International pilots, the factory flybarless rotor head set features both the best performance and rigid structure. The design is applicable to most of the popular brand 3-axis gyros.

With the flybarless rotor head, you will get more power and extend flight time causes of the less mechanical and flybar drags, moreover, the crisp pitch response that makes your helicopter fly much harder than you did ever.

本套件係經由世界級知名飛行員設計驗證，兼具最佳效能及結構強度，並且能適用於市場上主流之無平衡翼控制系統。

減少了平衡翼及相關機構的無平衡翼旋翼頭，可明顯提升動力表現及延長飛行時間，更可獲得更直接快速的螺距反應，使機體更輕易做出高難度的飛行動作！

Features 特點

1. 3-piece assembled main rotor grips for easy repair
2. New Lengthen control arms for high control resolution
3. New designed Rigid, lightweight one-piece main rotor hub
4. Enlarged titanium rod and ball linkage for rigidity & extreme pitch response
5. Applicable to both series of Titan X50 or Raptor 30/50
6. Applicable to most of popular brand 3-axis gyros

1. 主旋翼轉座採三件式組裝，方便維修
2. 加長型控制臂組，提高操控性
3. 全新設計輕量化金屬主旋翼固定座
4. 加粗鈦合金連桿組，螺距反應更明快直接
5. 適用於Titan X50或翼手龍30/50系列
6. 適用於市場主流品牌無平衡翼控制系統

Manual Format 說明書使用方式

1. All the parts illustrated in following assembly steps are both from this kit and from your original model. To rebuild your model clearly, the original parts are always identified by an asterisk * in front of the part number, please re-use them during the conversion.
2. Please refer your original instruction manual of model when disassembling the original model.
1. 各組裝步驟中的零件，有些包含在本套件中，有些是取用於您原本的愛機上。為清楚分辨零件來源，取用於您原有愛機上的零件，將會於零件編號前加註星號，請務必妥善保管，以利完成改裝。
2. 原機拆解時，請務必翻閱您手上的原機說明書。

Symbols Used Throughout The Manual 符號說明

The parts in the Kit are packed according to each major assembly steps. The part number and quantity are always shown in the square box on each page. To avoid confusion, only open up the bag that you need for the particular assembly. 零件均依照組裝步驟包裝，請依照組裝程序，逐一開啓零件包，避免零件遺失。

Note 注意

Assembly drawings will contain icons that indicate use of Threadlocker glue as needed. Examples of the icons are as right shown: 請依組裝步驟圖示，使用防鬆膠。圖示如右：

T22(#262)
THREADLOCKER
螺絲防鬆膠

Apply grease
使用潤滑油膏(黃油)

Hint
組裝提示

Apply threadlocker
使用螺絲防鬆膠

Spare Parts 零件包



PV1385 FLYBARLESS ELEVATOR LEVER ROD
無平衡翼升降舵推拉桿



PV1386 120° FLYBARLESS CONTROL ARM SET
120° 無平衡翼控制搖臂組



PV0115-1 WASHOUT LINK
連接座



PV0365 THRUST BEARING, d6xD12xW4.5
止推軸承組, d6xD12xW4.5



PV1323 METAL HEAD BUTTON
金屬旋翼頭制動器



PV1339 OUTER DAMPER (7mm)
外避震墊圈 (7mm)



PV1339-1 INNER DAMPER (7mm)
內避震墊圈 (7mm)



PV1361 SPINDLE SET (7mm)
固定軸組 (7mm)



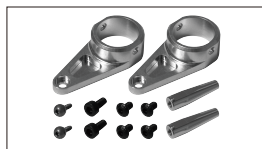
PV1362 SPINDLE BRG. SET (7mm), d7xD13xW5(2)
固定軸軸承組 (7mm), d7xD13xW5(2)



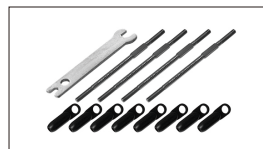
PV1382 FLYBARLESS METAL MAIN ROTOR HUB
無平衡翼金屬主旋翼固定座



PV1383 FLYBARLESS METAL CONTROL LEVER SET
無平衡翼金屬控制搖臂組



PV1384 FLYBARLESS METAL ROTOR GRIP LEVER SET
無平衡翼金屬轉座搖臂組



PV1387 TITANIUM LINKAGE ROD SET (76mm)
鈦合金連桿組 (76mm)



PV1418 METAL MAIN ROTOR GRIP
金屬旋翼轉座 (本體)



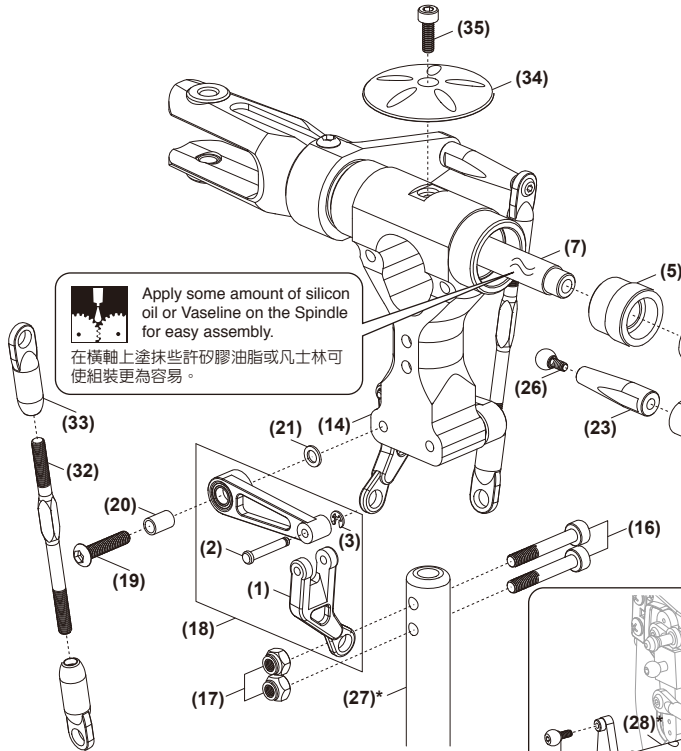
PV0651-1 HARDENED MAIN SHAFT
強化主軸

NOTE 備註

- PV1385 and PV1386 are included in #3925 kit ONLY.
- PV0651-1 is included in #3926 kit ONLY.
- PV1385和PV1386僅包含在#3925套件裡。
- PV0651-1僅包含在#3926套件裡。

Assembly 組裝說明

Secure all screws shown (except #16) on this page with a drop of threadlocker.
組裝圖上顯示之螺絲 (#16除外) 請使用適量防鬆膠鎖固。

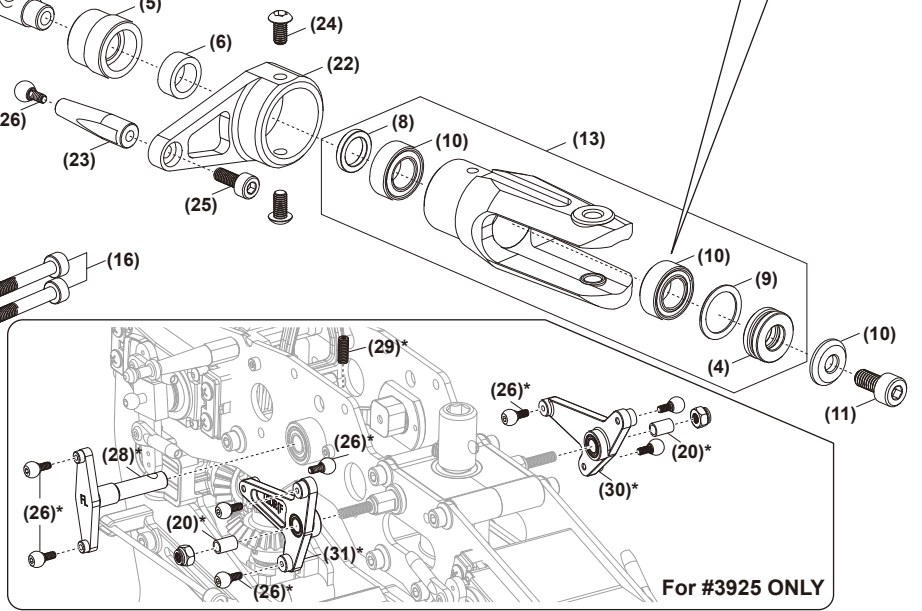
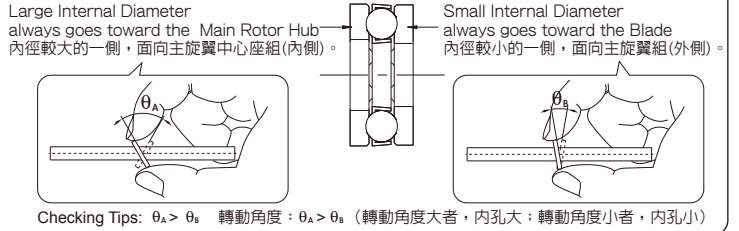


Apply some amount of silicon oil or Vaseline on the Spindle for easy assembly.
在橫軸上塗抹些許矽膠油脂或凡士林可使組裝更為容易。

* available depending on the item you purchased.
內附零件因購買套件不同而有差異。

Apply threadlocker 使用螺絲防鬆膠
Apply grease 使用潤滑油膏(黃油)

Diagram for Thrust Bearing Assembly 止推軸承安裝示意圖



CAUTION 注意事項

Preflight check both the mechanism settings and blade tracking is recommended, please refer your original instruction manual.
飛行前，請翻閱您手上的直升機組裝說明書，務必再次確認機構設定及主旋翼軌跡是否正確。

Spare Parts List 維修零件包表格

No.	Description	名稱	No.	Description	名稱	Qty	Index No.
PV0115-1	WASHOUT LINK	連接座	BK0016-1	Washout Link	連接座	2	1
			BK0171	Pin	插銷	2	2
			HMS15	E Ring	E型扣環	2	3
PV0365	THRUST BEARING, d6xD12xW4.5	止推軸承組, d6xD12xW4.5	HMX0612	Thrust Bearing, d6xD12xW4.5	止推軸承組, d6xD12xW4.5	2	4
PV1339	OUTER DAMPER (7mm)	外避震墊圈 (7mm)	BK2573	Outer Damper, 7mm	外避震墊圈, 7mm	4	5
PV1339-1	INNER DAMPER (7mm)	內避震墊圈 (7mm)	BK2572	Inner Damper, 7mm	內避震墊圈, 7mm	4	6
PV1361	SPINDLE SET (7mm), X50	固定軸組 (7mm), X50	BK2214	Hardened Feathering Shaft	強化固定軸, D7	1	7
			BK2525	Flap Collar, d7xD10xW1.5	避震軸環, d7xD10xW1.5	2	8
			BK2216	Thrust Washer, d10xD13xW0.5	止推墊片, d10xD13xW0.5	2	9
			BK0435	Washer, d4xD11xW1.7	墊圈, d4xD11xW1.7	2	10
			HMC4-8B	Socket Screw, M4x8	內六角螺絲, M4x8	2	11
PV1362	SPINDLE BRG. SET (7mm) d7xD13xW5(2)	固定軸承組 (7mm), d7xD13xW5(2)	HMV1370ZZWY	Bearing, d7xD13xW5	滾珠軸承, d7xD13xW5	2	12
PV1418	METAL MAIN ROTOR GRIP	金屬旋翼轉座 (本體)	BV2574	Metal Main Rotor Grip	金屬旋翼轉座組	2	13
			BK2216	Thrust Washer	止推墊片	2	9
			HMX0612	Thrust Bearing	止推軸承	2	4
PV1382	FLYBARLESS METAL MAIN ROTOR HUB	無平衡翼金屬主旋翼固定座	BK2510	FB Metal Main Rotor Hub	無平衡翼金屬主旋翼固定座	1	14
			BK2573	Outer Damper, 7mm	外避震墊圈, 7mm	2	5
			BK2572	Inner Damper, 7mm	內避震墊圈, 7mm	2	6
			BK0616	Part-thread Socket Screw, M3x20	半牙內六角螺絲, M3x20	2	16
			HMM3Z	Nylon Nut, M3	止鬆螺帽, M3	2	17
PV1383	FLYBARLESS METAL CONTROL LEVER SET	無平衡翼金屬控制搖臂組	BV2508	FB Metal Control Lever Set	無平衡翼金屬控制搖臂組	2	18
			HSA3-14	Button Head Socket Screw, M3x14	半圓頭內六角螺絲, M3x14	2	19
			BK0077	Collar, d3xD4xW6	軸環, d3xD4xW6	2	20
			BK0088	Washer, d3xD4xW0.5	墊片, d3xD5xW0.5	2	21
PV1384	FLYBARLESS METAL ROTOR GRIP LEVER SET	無平衡翼金屬轉座擺臂組	BK2575	FB Metal Rotor Grip Lever	無平衡翼金屬轉座擺臂	2	22
			BK2576	FB Metal Rotor Grip Post	無平衡翼金屬連接座	2	23
			HSA3-6B	Button Head Socket Screw, M3x6	半圓頭內六角螺絲, M3x6	4	24
			HMC3-8B	Socket Screw, M3x8	內六角螺絲, M3x8	2	25
			BK0649-1	Linkage Ball (A)	內六角連接頭螺絲 (A)	2	26
			BK6512	Hardened Main Shaft	強化主軸	1	27
PV0651-1	HARDENED MAIN SHAFT	強化主軸	BK2571	FB Elevator Lever Rod	無平衡翼升降舵推拉桿	1	28
PV1385	FLYBARLESS ELEVATOR LEVER ROD	無平衡翼升降舵推拉桿	BK0649-1	Linkage Ball (A)	內六角連接頭螺絲 (A)	2	26
			HME3-8B	Set Screw, M3x8	無頭內六角螺絲, M3x8	1	29
PV1386	120° FLYBARLESS CONTROL ARM SET	120° 無平衡翼控制搖臂組	BV2570	120° FB Control Arm-L	120° 無平衡翼控制搖臂, 左	1	30
			BV2569	120° FB Control Arm-R	120° 無平衡翼控制搖臂, 右	1	31
			BK0077	Collar, d3xD4xW6	軸環, d3xD4xW6	2	20
			BK0649-1	Linkage Ball (A)	內六角連接頭螺絲 (A)	6	26
PV1387	TITANIUM LINKAGE ROD SET (76mm)	鈦合金連桿組 (76mm)	BK2596	Linkage Rod, 52L	連接桿, 52L	4	32
			BK1925	Ball Link	單頭連接桿	8	33
			BD7425	Wrench	拉桿調整扳手	1	-
PV1323	METAL HEAD BUTTON	金屬旋翼頭制動器	BK2182	Metal Head Button	金屬旋翼頭制動器	1	34
			HMC25-8B	Socket Screw, M2.5x8	內六角螺絲, M2.5x8	1	35

