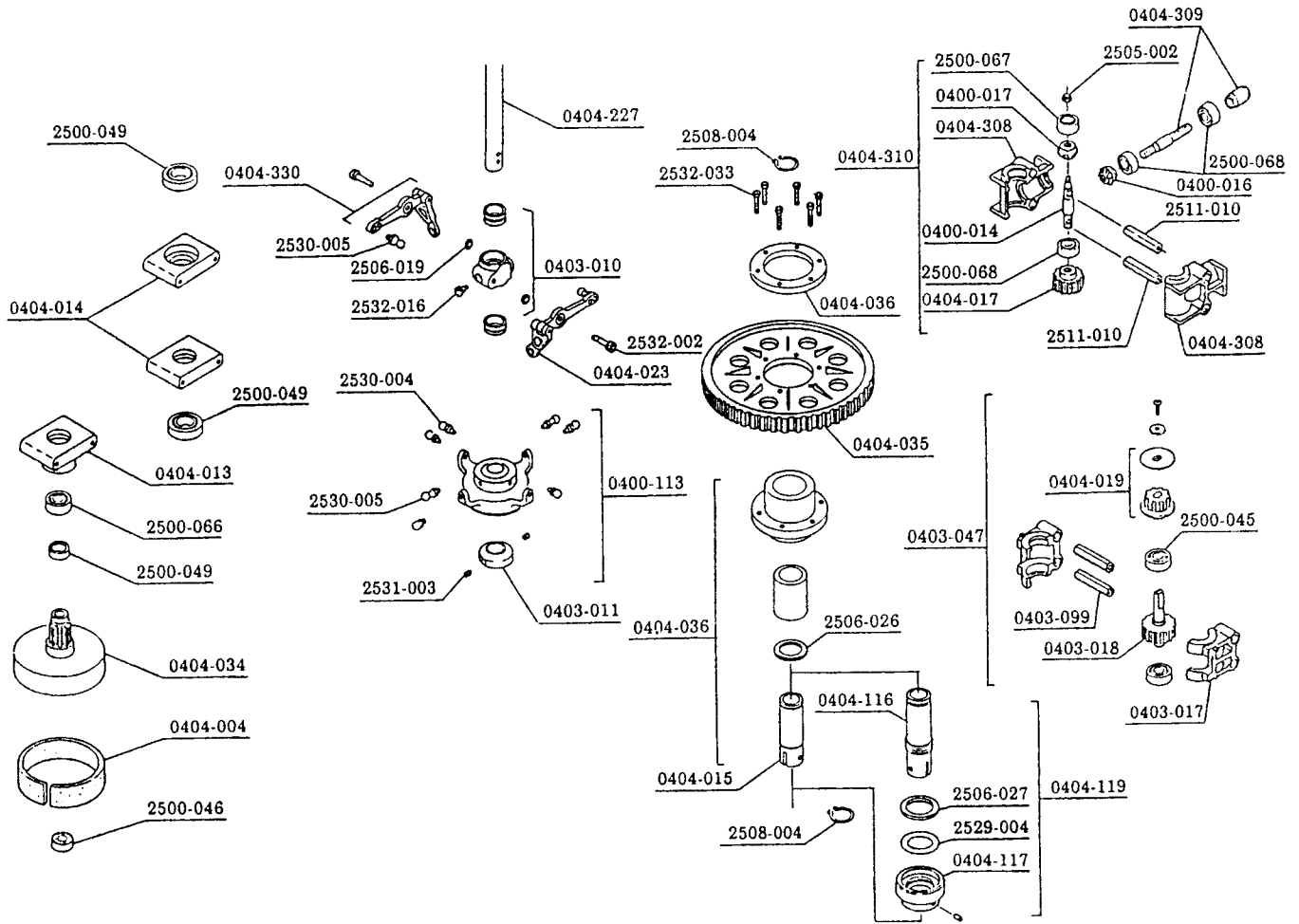
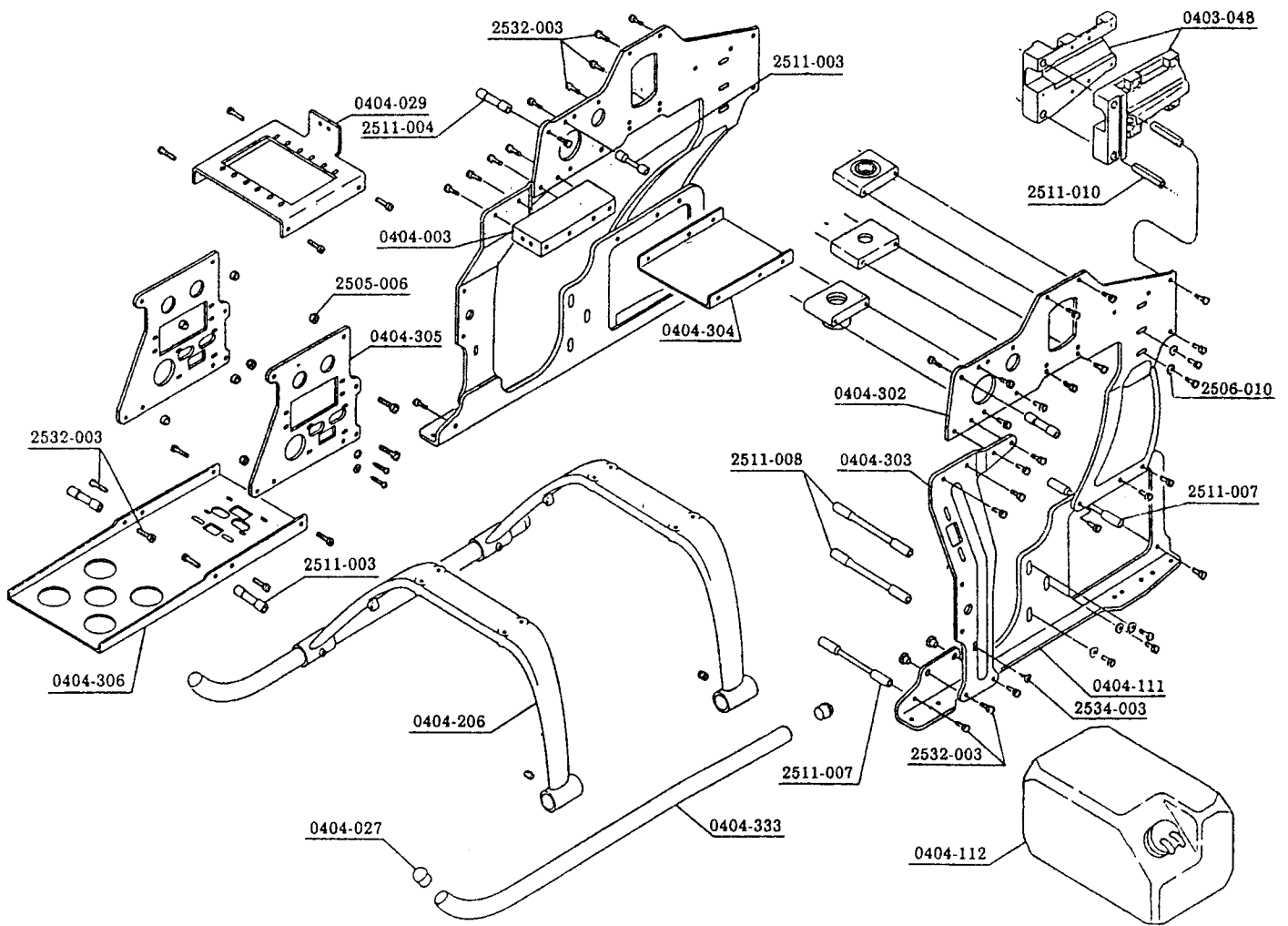


◎ : Standard equipped
 ○ : Single part, inter changeable without machining
 △ : More than two parts are needed. Further machining may be needed.

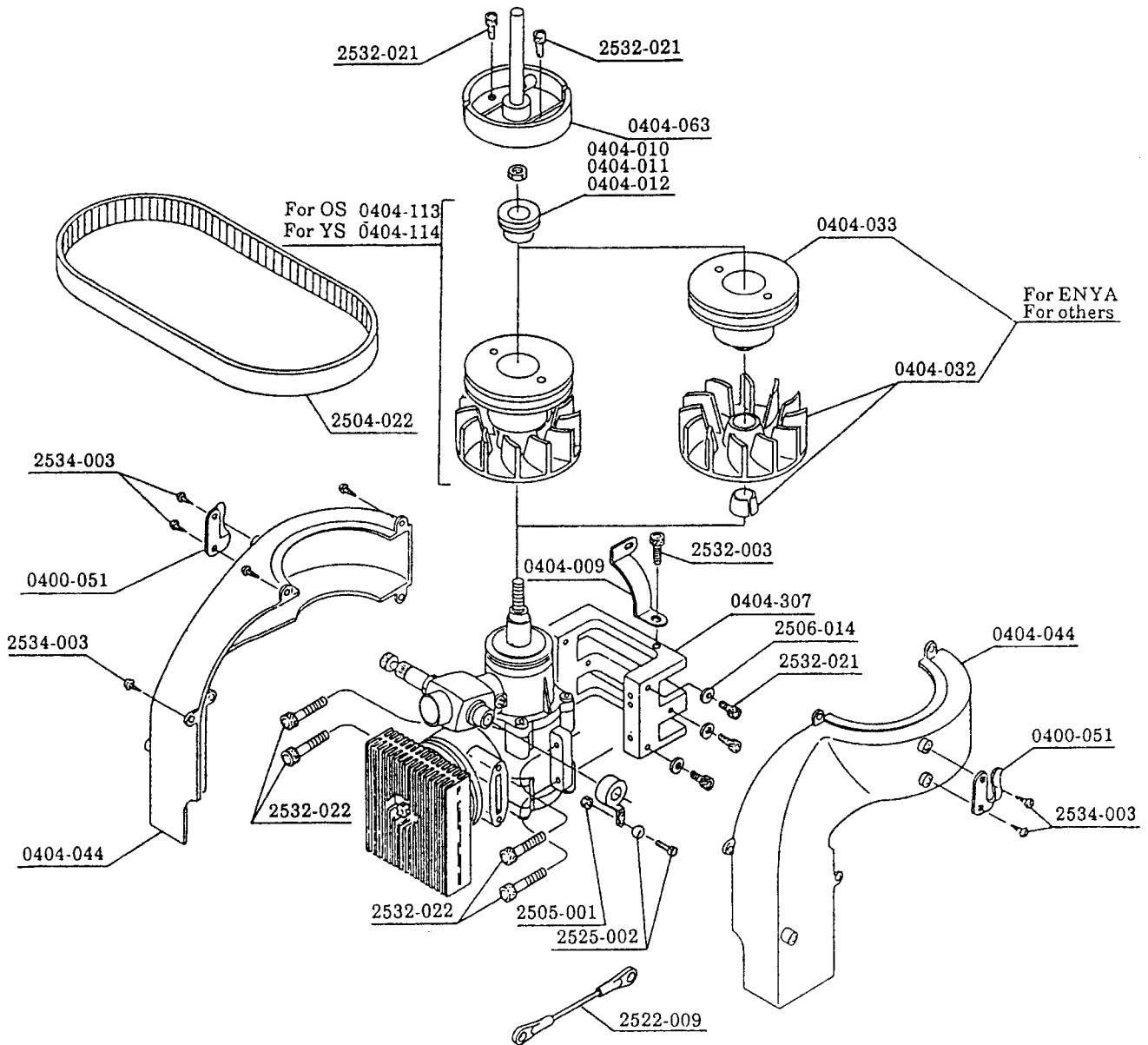
Code No.	Name of parts	Quantity	Japanese retail price (¥)	Remarks	10DDF	SSR	SSR- II	SSZ	FFZ
0401-002	Seesaw	1	2,200		◎	◎	◎		
0401-004	Stabilizer control arm	2	1,200		◎	◎	◎	◎	◎
0401-010	Blade holder	1	8,000	With drag metal	◎	◎	◎	◎	
0402-006	Damper rubber	4	400	Common with Shuttle			◎		
0403-081	Stabilizer bar	2	1,000		◎	◎	◎	◎	◎
0404-001	Mixing arm	1	1,500	With bearing	◎	◎	◎	◎	◎
0404-089	SSR feathering spindle	1	2,800			◎	◎	◎	
0404-207	Semi-symmetrical main blade with weight L=655	1 set	4,500	Weight with reinforcement plate	○	○	◎	○	◎
0404-208	Stabilizer blade CG-W60-L105	2	1,600	With stabilizer cover film	○	○	◎	◎	◎
0404-216	Pitch arm P=13	2	600	With M3×8 cap screw	○	○	◎	◎	◎
0404-221	Center hub SSR- II	1	4,000				◎		
0404-222	SSZ yoke side plate	2	4,000	Pressure fit damper outer collar			◎	◎	
0404-223	SSZ damper inner collar set	2	350				◎	◎	



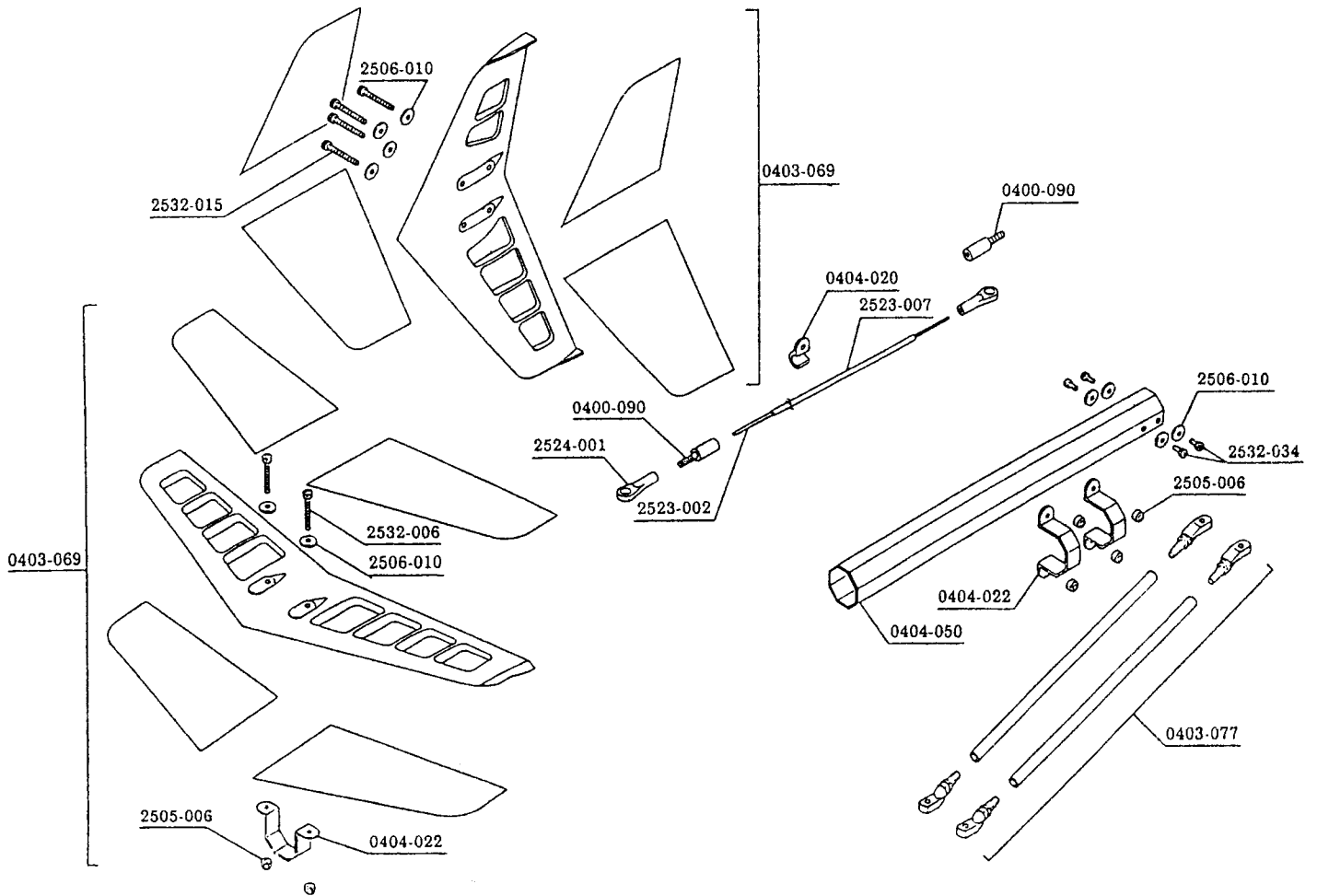
Code No.	Name of parts	Quantity	Japanese retail price (¥)	Remarks	DDF SST	SST-E	New SST-E	SST-C	BBZ S
0400-004	Metal made clutch bell lining	2	200		○	○	○	○	
0400-014	Counter shaft	1	600		○	○	○		
0400-016	Miter gear (II) Left	1	1,500		○	○	○		
0400-017	Miter gear (AB) Right	1	1,500		○	○	○		
0400-113	Co-axial swash assembly	1 set	7,500	Pre-assembled	○	○	○	○	○
0403-010	Slide block set	1	1,000		△	○	○	○	○
0403-011	Mast lock	1	300		○	○	○	○	○
0403-017	Counter gear case	1 set	800	Common with R and L			○	○	○
0403-018	Counter gear 18T	1	1,300				○	○	○
0403-019	Timing pulley 9T	1 set	300	With flange			○	○	○
0403-047	Counter gear set (Belt type)	1 set	3,800				○	○	○
2511-010	Hexagon cross member L = 26	2	400			○	○	○	○
0404-013	W type bearing holder φ19	1	1,500	2500-066 Bearing φ6×φ19×6ZZ 2500-049 Bearing φ10×φ19×5ZZ		○	○	○	
0404-014	Metal made bearing holder φ19	1	1,000	2500-049 Bearing φ10×φ19×5ZZ		○	○	○	○
0404-015	φ14 auto-rotation drive shaft	1	3,000			○	○		
0404-017	Counter gear 18T	1	2,200			○	○		
0404-023	Radius arm	2	300		○	○	○	○	○
0404-034	Clutch bell with gear	1	4,500	With bearing		○	○	○	
0404-035	Main gear for auto-rotation 97T	1	1,500			○	○		
0404-036	φ14 auto-rotation clutch set	1	10,000	Pre-assembled		○	○	△	△
0404-116	EX auto-rotation drive shaft	1	6,800			△	△		
0404-117	EX auto-rotation torque limiter	1	2,000			△	△		
0404-119	EX auto-rotation drive shaft set	1 set	8,000			○	○		
0404-227	Main mast L = 185, 195	1	1,000	0404-037 is discontinued.		○	○		
0404-308	Counter gear case (R, L)	1 set	600				○		
0404-309	Counter joint shaft	1	900	Joint shaft with cover			○		
0404-310	Counter gear assembly	1 set	7,800	0404-018 is discontinued.		○	○		
0404-330	Metal made control arm	1	1,600		○	○	○	○	○



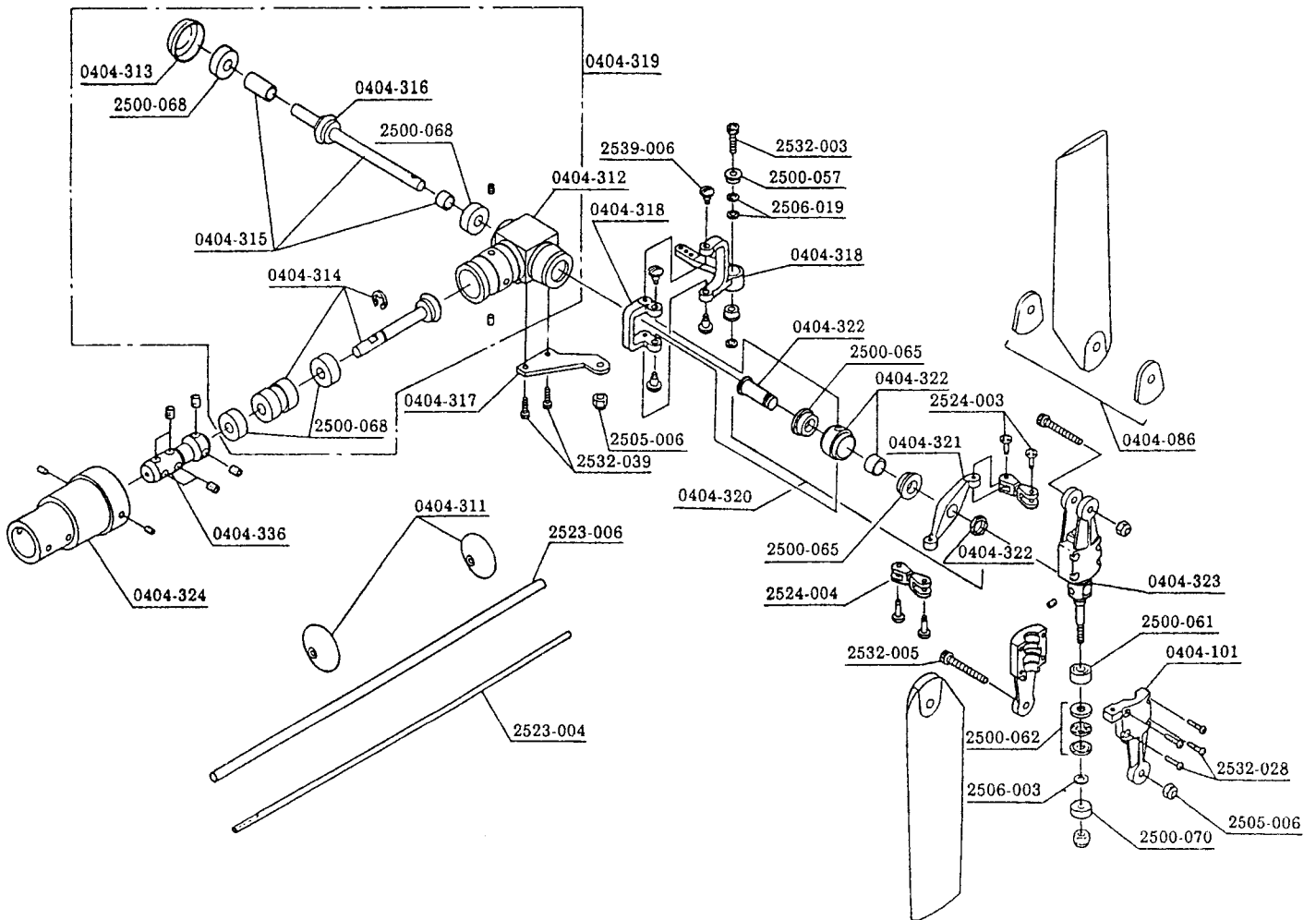
Code No.	Name of parts	Quantity	Japanese retail price (¥)	Remarks	DDF SST	SST-E	New SST-E	SST-C	BBZ-S
0403-048	Tail boom holder	1 for each	1,200	(R), (L)		○	○	○	○
2511-010	Hexagon cross member L=26	2	400			○	○	○	○
0404-003	Front cross member block	1	1,500			○	○	○	○
2511-007	Cross member M3×64	2	500			○	○	○	○
2511-003	Cross member M3×26	2	500			○	○	○	
2511-008	Cross member M3×69	2	500			○	○	○	
2511-004	Cross member M3×38	2	500			○	○	○	
0404-027	Skid pipe cap	4	300			○	○	○	○
0404-029	Servo mount (A)	1	800			○	○	○	
0404-111	Main frame (B) for large fuel tank	1 for each	4,000	(R), (L)		△	○	△	
0404-112	Large type fuel tank	1 set	1,900			△	○	△	
0404-206	Skid foot (Condor)	2	1,000			△	○	○	○
0404-302	Main frame (A)	1 for each	3,600	(R), (L)		△	○	△	
0404-303	Main frame (C)	1 for each	2,500	(R), (L)		△	○	△	
0404-304	Gyro mount	1	1,000			△	○	△	
0404-305	Servo mount (D)	2	1,200			△	○	△	
0404-306	Mechanical plate	1	1,200			○	○	○	
0404-333	Skid pipe (Black)	2	1,600			○	○	○	○



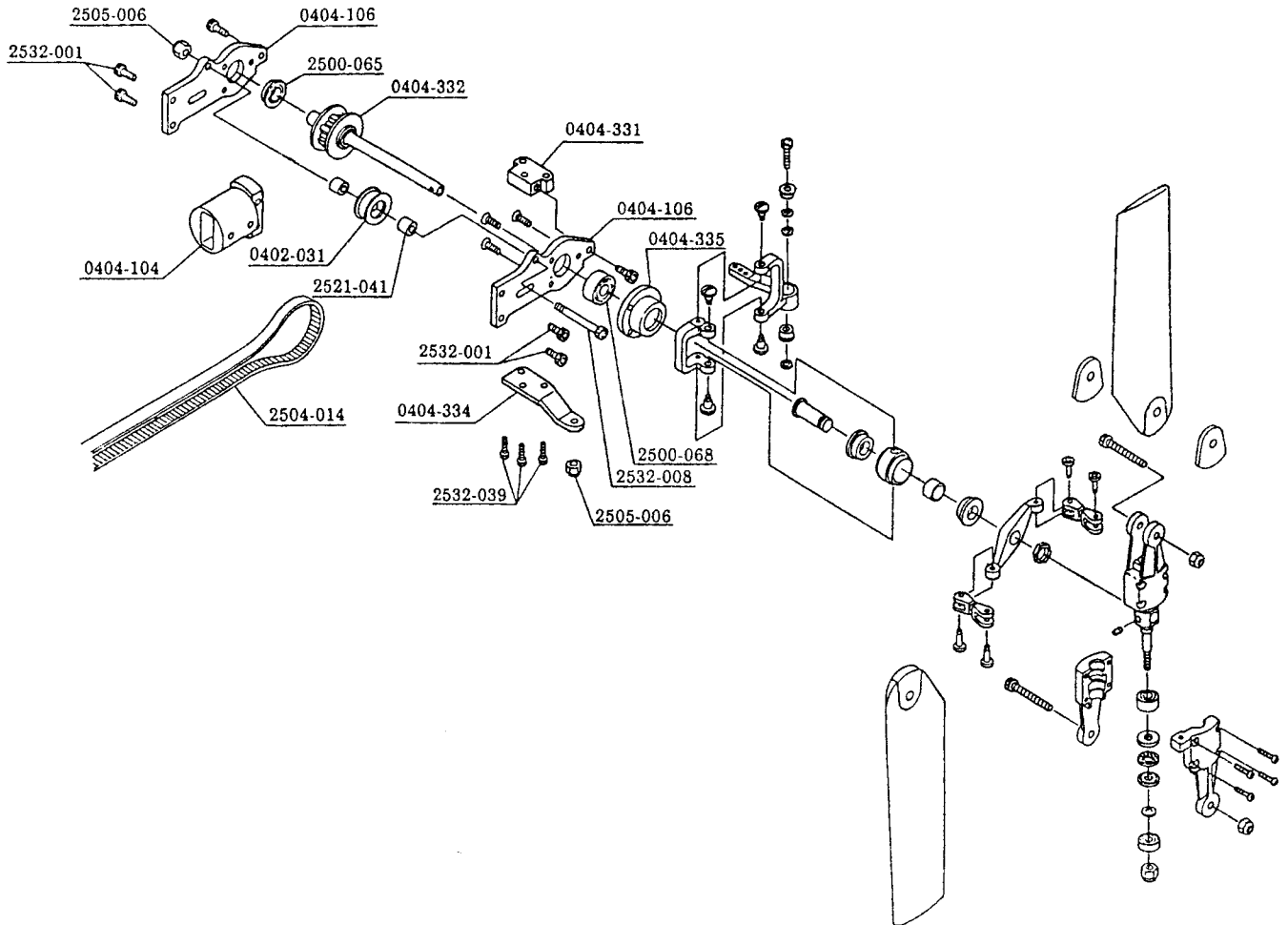
Code No.	Name of parts	Quantity	Japanese retail price (¥)	Remarks	DDF SST	SST-E	New SST-E	SST-C	BBZ-S
0400-051	Starting belt hook	1 for each	500	(R), (L)	○	○	○	○	
0404-009	Cooling cover setting bracket	1	300			○	○	○	
0404-010	Starter pulley washer For OS	1	300		○	○	○	○	
0404-011	Starter pulley washer For ENYA	1	300		○	○		○	
0404-012	Starter pulley washer For YS	1	300		○	○		○	
0404-032	Cooling fan set	1 set	2,000	With tapered spacer	○	○		○	
0404-033	Starter pulley	1	3,000		○	○		○	
0404-044	Divisional type cooling cover	1 for each	1,000	(R), (L)	○	○	○	○	
0404-063	Clutch shoe with shaft	1	3,000			○	○	○	
0404-113	EX starter pulley For OS	1 set	5,100	With washer		○	○	○	
0404-114	EX starter pulley For YS	1 set	5,100	With washer		○	○	○	
0404-307	Engine mount	1	2,500		○	○	○	○	



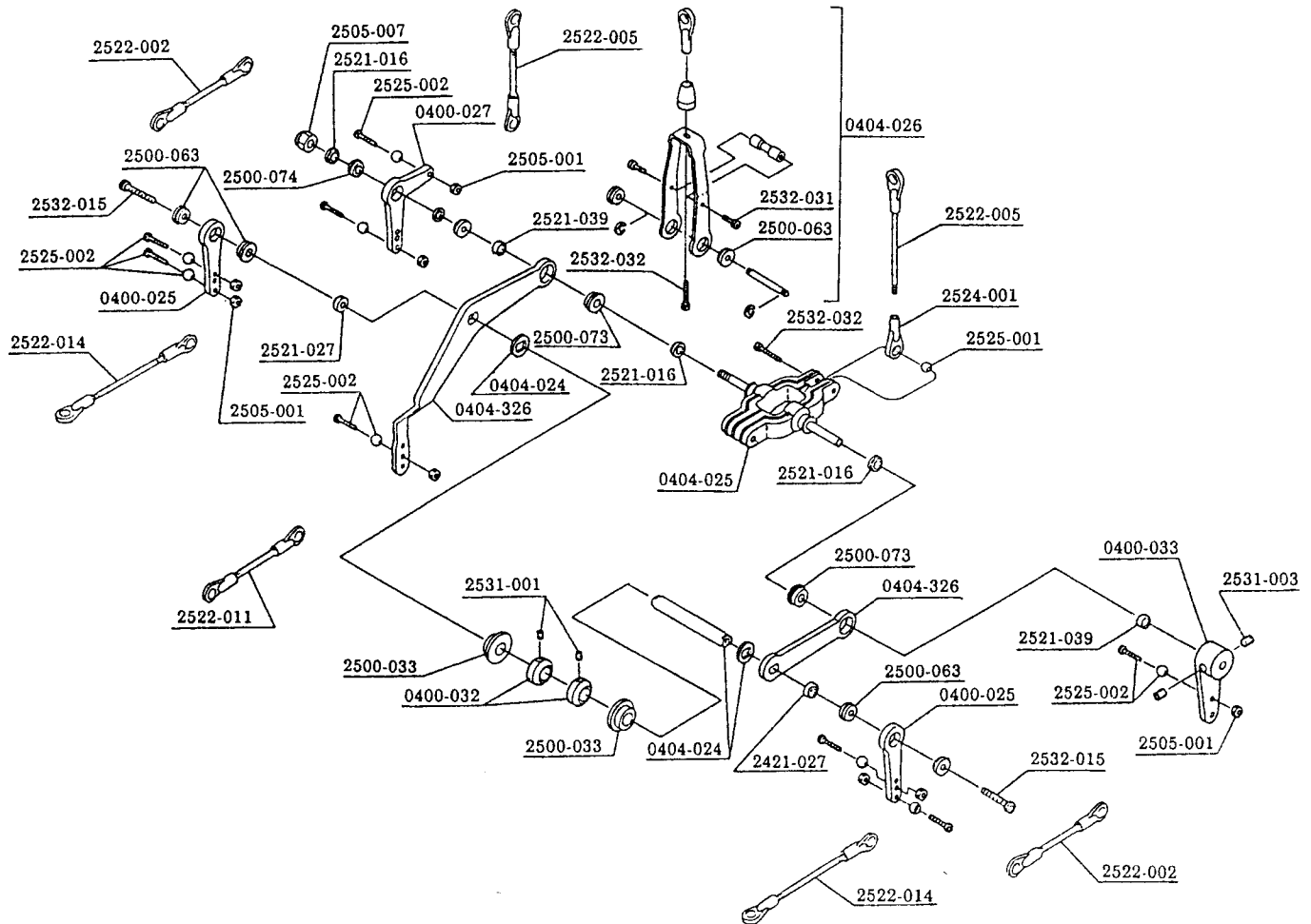
Code No.	Name of parts	Quantity	Japanese retail price (¥)	Remarks	DDF SST	SST-E	New SST-E	SST-C	BBZ-S
0400-090	Adjust joint (B)	5	500		⊙	⊙	⊙	⊙	
0403-069	Stabilizer set	1 set	1,500	With horizontal, vertical and seal		⊙	⊙	⊙	⊙
0403-077	Tail boom brace set	1 set	1,000	With terminal		⊙	⊙	⊙	⊙
0404-020	Pipe clamp bracket	2	250			⊙	⊙	⊙	⊙
0404-022	Pipe band	3	500			⊙	⊙	⊙	⊙
0404-050	Octagonal tail boom pipe L=735	1	1,600			⊙	⊙	⊙	
0404-329	Octagonal long tail boom pipe L=820	1	1,800	With collar for mounting the tail gear		△	△	△	



Code No.	Name of parts	Quantity	Japanese retail price (¥)	Remarks	DDF SST	SST-E	New SST-E	SST-C	BBZ S
0404-086	Symmetrical tail blade L = 105	1 set	800	With reinforcement plate	△	△	◎	△	△
0404-101	EX tail blade holder	2 for each	300	(A), (B)		△	◎	△	△
0404-336	Tail joint ø2	1	700		○	○	◎		
0404-311	Tail drive guide	2	500			△	◎		
0404-312	Tail gear box	1	4,800				◎		
0404-313	Tail gear box cap	1	700				◎		
0404-314	Gear with shaft	1 set	2,500	ø5×13×16 collar With ø4 E ring			◎		
0404-315	Tail 2nd shaft	1 set	600	With collar roll pin			◎		
0404-316	ø5 miter gear	1 set	2,300	With roll pin			◎		
0404-317	Tail pitch lever stay	1	400				◎		
0404-318	Tail pitch lever set	1 for each	500	(A), (B)			◎		
0404-319	Tail gear assembly	1 set	13,000	Tail box, gear and shaft		△	◎	△	△
0404-320	Tail pitch plate set	1 set	2,800	With boss, slide shaft and bearing			◎		
0404-321	Tail pitch plate	1	200				◎		
0404-322	Tail pitch plate boss	1 set	1,200	With collar			◎		
0404-323	Tail housing	1	800				◎		
0404-324	Tail holder ø19	1	1,300				◎		



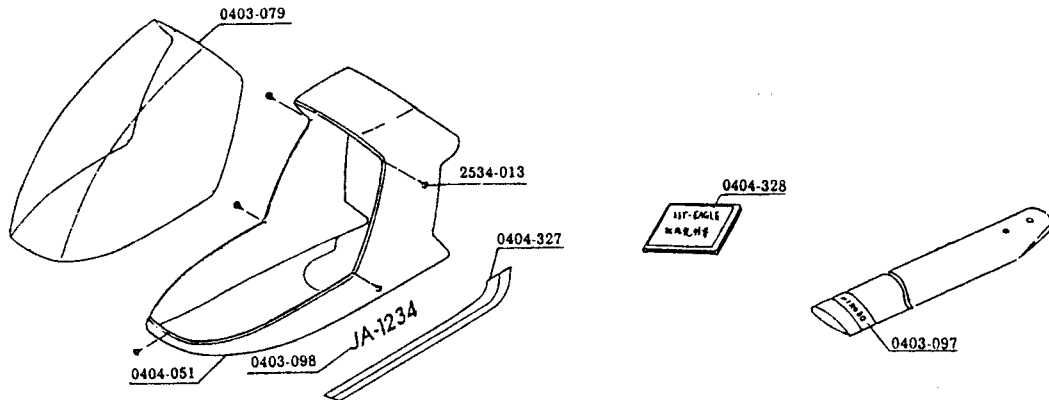
Code No.	Name of parts	Quantity	Japanese retail price (¥)	Remarks	DDF SST	SST-E	New SST-E	SST-C	BBZ-S
0402-031	Guide pulley (With bearing)	1 set	800	With bearing			◎	◎	◎
0404-104	EX unit base (A)	1	3,200				◎		
0404-106	EX unit plate	1 for each	2,200	(R), (L)			◎		
0404-331	Tail unit base (B)	1	2,400				◎		
0404-332	φ5 tail shaft	1	1,200	With 9T pulley			◎		
0404-334	Tail unit stay	1	400				◎		
0404-335	Bearing holder φ13	1 set	1,500	With M2×6×6 countersunk screw			◎		
0404-107	EX unit holder	1	2,000	For body mounting and belt type					



Code No.	Name of parts	Quantity	Japanese retail price (¥)	Remarks	DDF SST	SST-E	New SST-E	SST-C	BBZ-S
0400-025	Metal made I-type lever ø3	1 set	1,800	With bearing	○	○	○		
0400-027	Metal made L-type lever ø4	1 set	2,200	With bearing	○	○	○		
0400-032	Shaft lock ø6	2	400	With screw	○	○	○		
0400-033	Elevator torque lever	1	600	With screw	○	○	○		
0404-024	Pitch lever shaft	1	400	With reinforcement washer		○	○		
0404-025	Elevator lever	1	1,200	With shaft		○	○		
0404-026	Elevator rod set	1 set	2,000	With bearing and link stand shaft		○	○		
0404-326	Collective pitch lever set	1 for each	800	(A), (B)		△	○	△	

New SST-EAGLE - 9

HIROBO LIMITED



Code No.	Name of parts	Quantity	Japanese retail price (¥)	Remarks	DDF SST	SST-E	New SST-E	SST-C	BBZ-S
0403-079	Canopy	1	1,600			⊙	⊙	△	
0404-051	Cabin	1	7,800			⊙	⊙	△	
0403-098	Decal for identification numbers	1	500		○	⊙	○	○	○
0403-097	Tracking tape	1	500						
	Optional parts								
0400-124	50-61 square type side exhaust muffler	1 set	6,200	OS61 short YS60 ENYA 60	○	○	○	○	
0401-095	Rear exhaust muffler for SST	1 set	6,200		○	○	○	○	
0401-103	Side exhaust muffler for OS61SFH	1 set	6,200	OS61SF-H	○	○	○	○	
0401-104	Muffler adapter for OS61SFH	1	1,200						
0403-061	Side exhaust muffler for BBC	1 set	4,300	With plate for 46VFH	○	○	○	○	⊙
0403-096	Metal made seesaw set	1 set	9,800	Pre-assembled	⊙	⊙	⊙		
0403-101	Starter cone	1	1,000	With screw		△	△	△	△
0404-053	Bearing holder with thrust	1 set	3,000			○	○	○	
0404-054	Cross member M3×74	1	600	For servo bed assembly		○	○	○	
0404-055	EX W-type wash-out	1 set	5,500		△	○	○	○	○
0404-056	EX main gear 95T	1	3,000			○	○		
0404-057	EX main gear 97T	1	3,000			○	○		
0404-058	EX main gear 99T	1	3,000			○	○		
0404-060	Clutch shoe for cone starter with shaft	1 set	3,000			△	△	△	
0404-110	Clutch assembly for cone starter	1 set	4,600			○	○	○	
0404-215	FFZ rotor head assembly	1 set	19,800			△	△	⊙	⊙
0404-220	SSR-II rotor head assembly	1 set	39,800			△	⊙	△	
0404-224	SSZ rotor head assembly	1 set	39,800			△	△	△	△
0404-325	For tail holder body ø19	1	1,300				△		
0404-327	SST-EAGLE decal	1 set	1,300	With stabilizer decal		○	⊙		
0404-328	SST-EAGLE instruction manual	1	1,000				⊙		
2400-001	Z starter 12V adapter cord	1	1,000		○	○	○	○	○
2400-002	Z starter	1 set	6,800						
2400-005	Z starter case set	1 for each	700	(R), (L)					
2400-006	Adapter rubber for Z starter spinner	1	300						
2400-011	Main blade heat shrink tubing (Black)	1	300	2m	○	○	○	○	○
2400-012	Main blade heat shrink tubing (Red)	1	300	2m	○	○	○	○	○
2400-013	Main blade heat shrink tubing (White)	1	300	2m	○	○	○	○	○
2400-014	Tail blade heat shrink tubing (Black)	1	200	1m	○	○	○	○	○
2400-015	Tail blade heat shrink tubing (Red)	1	200	1m	○	○	○	○	○
2400-016	Tail blade heat shrink tubing (White)	1	200	1m	○	○	○	○	○
0404-329	Octagonal long tail pipe L=820	1	1,800	For tail gear mounting With holder		△	△	△	△
2404-019	Timing belt 730XL020	1	1,800			△	△	△	△
2523-005	Stainless pipe ø1.2×1000	5	3,500	For rudder control and guide	○	○	○	○	○

New SST-EAGLE - 10

HIROBO LIMITED

Code No.	Name of parts	Quantity	Japanese retail price (¥)	Remarks
2500-016	Bearing $\phi 4 \times \phi 9 \times 4F$ ZZ	2	1,200	For support of SSZ yoke side plate
2500-045	Bearing $\phi 6 \times \phi 15 \times 5ZZ$	2	1,200	For belt, counter gear, For support of shaft
2500-033	Bearing $\phi 6 \times \phi 12 \times 4F$ ZZ	2	1,200	For support of collective pitch lever shaft
2500-036	Bearing $\phi 3 \times \phi 8 \times 4F$ ZZ	2	1,200	For support of seesaw
2500-044	Bearing $\phi 8 \times \phi 16 \times 5ZZ$	2	1,200	For support of blade holder
2500-045	Bearing $\phi 6 \times \phi 15 \times 5ZZ$	2	1,200	For support of counter gear (for belt)
2500-046	Bearing $\phi 6 \times \phi 12 \times 4ZZ$	2	1,200	For support of clutch bell inner side
2500-049	Bearing $\phi 10 \times \phi 19 \times 5ZZ$	2	1,200	For support of main mast and clutch bell upper side
2500-057	Bearing $\phi 3 \times \phi 6 \times 2.5F$ ZZ	2	1,200	For support of tail pitch lever
2500-060	Bearing $\phi 6 \times \phi 12 \times 4.5H$ thrust	2	1,200	For support of blade holder
2500-061	Bearing $\phi 4 \times \phi 9 \times 4ZZ$	2	1,200	For support of stabilizer bar and tail blade holder inner side
2500-062	Bearing $\phi 4 \times \phi 9 \times 4H$ thrust	2	1,200	For support of tail blade holder
2500-063	Bearing $\phi 3 \times \phi 7 \times 2F$ OP	2	1,200	For support of mixing arm, metal made control arm, metal made I-type lever $\phi 3$
2500-065	Bearing $\phi 6 \times \phi 10 \times 3F$ ZZ	2	1,200	For support of $\phi 5$ tail shaft (for belt) right side, For tail pitch plate
2500-066	Bearing $\phi 6 \times \phi 19 \times 6$ ZZ	2	1,600	For support of clutch shaft
2500-067	Bearing $\phi 4 \times \phi 13 \times 5$ ZZ	2	1,200	For support of counter shaft (for shaft) upper side
2500-068	Bearing $\phi 5 \times \phi 13 \times 4$ ZZ	2	1,200	For support of counter shaft (for shaft) upper side, lower side, counter joint shaft, tail 1st shaft, 2nd shaft and $\phi 5$ tail shaft left
2500-070	Bearing $\phi 3 \times \phi 9 \times 3$	2	1,200	For support of tail blade holder outer side
2500-073	Bearing $\phi 4 \times \phi 8 \times 3F$	2	1,200	For support of elevator lever
2500-074	Bearing $\phi 4 \times \phi 7 \times 2F$ OP	2	1,200	For metal made L-type lever
2504-014	Timing belt 670X1.020	1	1,800	SST-EAGLE, For standard
2504-019	Timing belt 730X1.020	1	1,800	For long tail
2504-022	Starting belt L=400	1	600	
2505-001	M2 nut	20	200	
2505-002	M3 nut	20	200	
2505-006	M3 nylon nut	10	200	
2505-007	M4 nylon nut	10	200	
2506-003	Flat washer $\phi 3 \times \phi 6 \times 0.5$	20	100	
2506-005	Flat washer $\phi 4 \times \phi 6 \times 0.5$	10	100	
2506-006	Flat washer $\phi 4 \times \phi 8 \times 0.5$	20	100	
2506-010	Flat washer $\phi 3 \times \phi 9 \times 1$	20	100	
2506-014	$\phi 4$ hardened washer	5	400	
2506-018	Flat washer $\phi 4 \times \phi 20 \times 1$	5	500	For main blade mounting
2506-019	Flat washer $\phi 3 \times \phi 4.5 \times 0.5$	10	200	
2506-024	Flat washer $\phi 4 \times \phi 20 \times 2$	4	500	
2506-026	Flat washer $\phi 14 \times \phi 18.5 \times 0.5$	2	300	$\phi 14$ auto-rotation drive shaft
2506-027	Flat washer $\phi 16 \times \phi 21 \times 1$	5	400	EX auto-rotation drive shaft
2506-028	Flat washer $\phi 3.9 \times \phi 5.8 \times 0.1$	10	400	For blade holder and clearance adjusting
2508-002	S-8 stop ring	5	200	Feathering spindle
2508-004	S-14 stop ring	5	500	For auto-rotation drive shaft
2521-016	Bearing collar $\phi 4 \times 1.5S$	1	200	Elevator lever
2521-027	Bearing collar 2.5t	2	300	For metal made I-type arm and mixing arm
2521-034	Blade holder bearing collar	2	200	
2521-039	Collar $\phi 4 \times 6 \times 2$	2	400	Elevator lever
2521-041	Collar $\phi 3 \times \phi 6 \times 4.7$	2	300	Guide pulley
2522-001	Adjust rod M2 \times 16	5	500	Mixing arm \leftrightarrow Pitch arm

New SST-EAGLE - 11

HIROBO LIMITED

Code No.	Name of parts	Quantity	Japanese retail price (¥)	Remarks
2522-002	Adjust rod M2×25	5	500	Metal made I-type arm ↔ Metal made L-type arm and elevator torque lever
2522-005	Adjust rod M2×45	5	500	Swash plate ↔ Metal made L-type arm and elevator torque lever
2522-009	Adjust rod M2×70	5	500	W-type wash-out ↔ Stabilizer control arm Throttle lever ↔ Throttle servo
2522-011	Adjust rod M2×90	5	500	Mixing arm ↔ Wash-out plate Pitch lever ↔ Pitch servo
2522-014	Adjust rod M2×110	5	500	Metal made I-type arm ↔ Aileron servo and elevator servo
2523-002	Rudder control shaft ϕ 1.2×1100	10	1,500	
2523-004	Tail drive shaft	10	2,000	With ϕ 2
2523-005	Stainless pipe ϕ 1.2×1000	5	3,500	For rudder control
2523-006	SUS pipe ϕ 2×700	5	3,500	For tail drive
2523-007	Rudder control tube	10	2,000	
2524-001	M2 rod end	10	500	
2524-003	Rod end pin M2×4.5	10	350	
2524-004	Double link pin type	2	300	Tail pitch plate ↔ Tail blade holder
2524-013	M2 rod end (S)	5	300	Mixing arm ↔ Pitch arm
2525-001	ϕ 5 hardened ball	10	500	
2525-002	EX ϕ 5 hardened ball	5	1,000	With cap screw M2×8
2529-004	P-16 O-ring	5	500	EX auto-rotation drive shaft
2530-001	Pivot bolt (A)	2	300	Pitch arm
2530-004	Pivot bolt (D)	2	300	Swash plate
2530-005	Pivot bolt (E)	2	300	Swash plate, Metal made control arm
2531-001	Set screw M3×3	10	300	
2531-003	Set screw M4×4	10	300	
2532-001	Cap screw M3×6	10	400	
2532-002	Cap screw M3×8	10	400	
2532-003	Cap screw M3×10	10	400	
2532-004	Cap screw M3×12	10	400	
2532-005	Cap screw M3×16	10	400	
2532-006	Cap screw M3×20	10	400	
2532-008	Cap screw M3×25	10	400	
2532-015	Cap screw M3×15	10	400	
2532-016	Wash-out guide pin	2	500	
2532-021	Cap screw M4×10	10	600	
2532-022	Cap screw M4×15	10	600	
2532-026	Cap screw M4×35	10	600	
2532-028	Cap screw M2×8	10	800	
2532-031	Cap screw M2×6	10	800	
2532-032	Cap screw M2×12	10	800	
2532-033	Cap screw M2.6×12	10	400	ϕ 14 auto-rotation gear
2532-034	Cap screw M3×5	10	400	For tail holder mounting
2532-039	Cap screw M2.6×6	10	400	For tail pitch lever stay mounting
2534-003	Tapping screw M3×8	10	100	
2539-006	M2×6 shouldered truss	2	500	For tail pitch lever