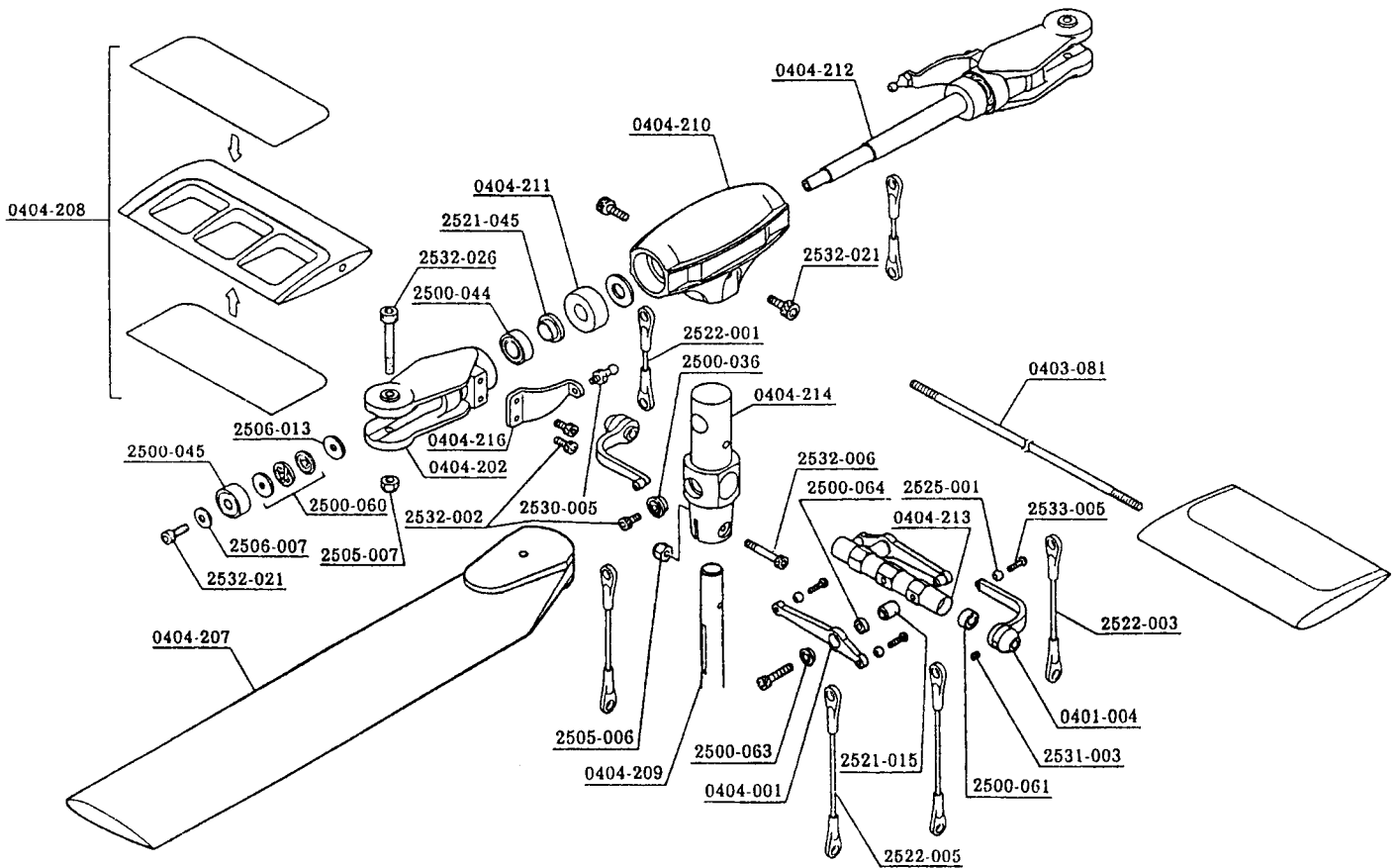


# SST-CONDOR - 1

HIROBO LIMITED

## FFZ Rotor head

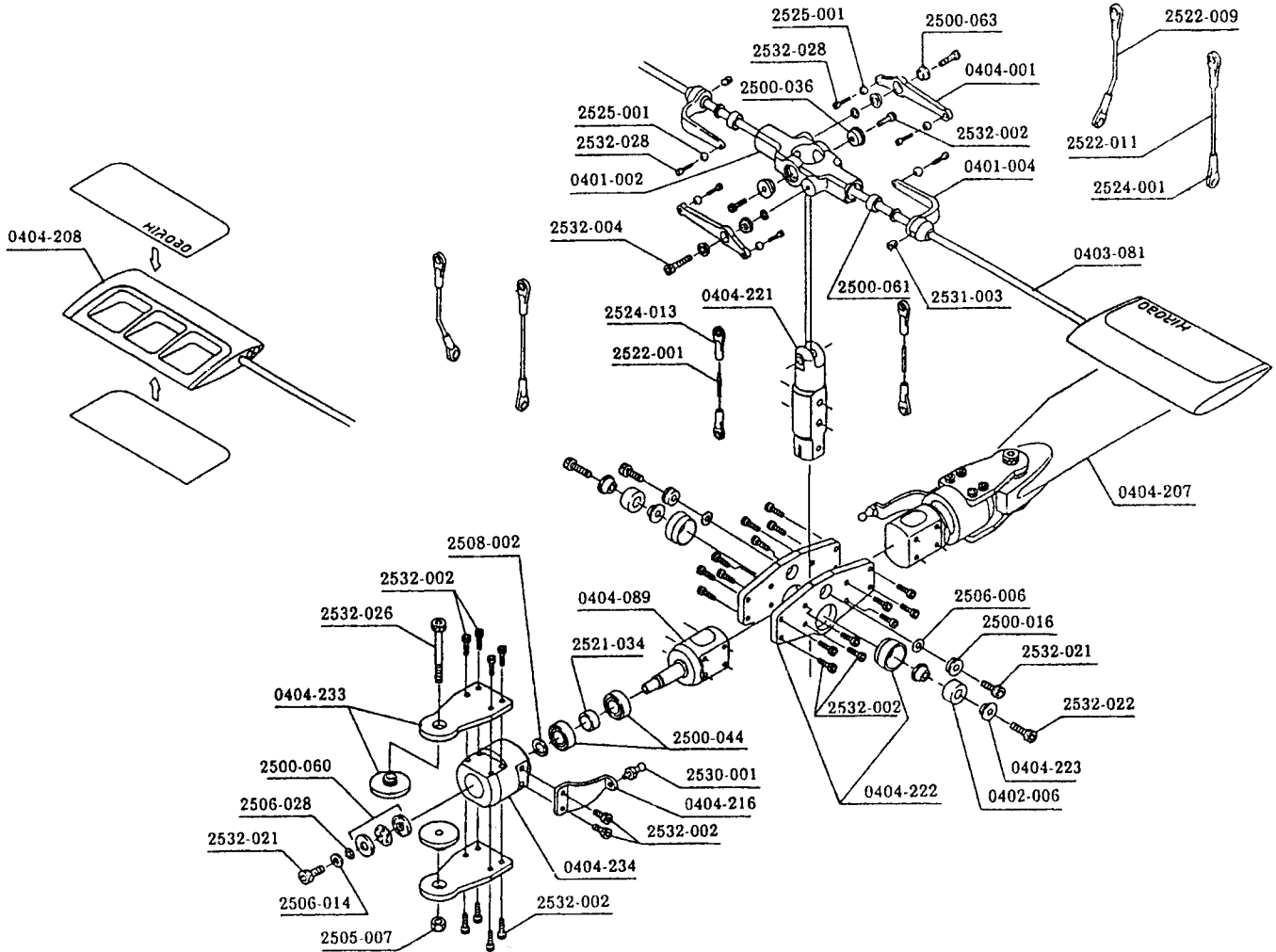


| Code No. | Name of parts                           | Quantity | Japanese retail price (¥) | Remarks                             | SST-E | SST-C | BBZ-S |
|----------|---|----------|---------------------------|-------------------------------------|-------|-------|-------|
| 0401-004 | Stabilizer control arm                  | 2        | 1,200                     |                                     | ⊙     | ⊙     | ⊙     |
| 0404-216 | Pitch arm P=13                          | 2        | 650                       |                                     | ⊙     | ⊙     | ⊙     |
| 0403-081 | Stabilizer bar                          | 2        | 1,000                     |                                     | ⊙     | ⊙     | ⊙     |
| 0404-001 | Mixing arm                              | 1        | 1,500                     | With bearing                        | ⊙     | ⊙     | ⊙     |
| 0404-202 | Blade holder                            | 2        | 1,200                     |                                     |       | ⊙     | ⊙     |
| 0404-207 | Semi-symmetrical main blade with weight | 2        | 4,500                     | With weight and reinforcement plate | ⊙     | ⊙     |       |
| 0404-208 | Stabilizer blade GCW 60-L105            | 2        | 1,600                     | A complete set                      | ⊙     | ⊙     | ⊙     |
| 0404-209 | Main mast (L=178)                       | 1        | 1,000                     |                                     |       | ⊙     | ⊙     |
| 0404-210 | Yoke (FFZ)                              | 1        | 1,000                     |                                     |       | ⊙     | ⊙     |
| 0404-211 | Damper rubber (FFZ)                     | 2        | 300                       |                                     |       | ⊙     | ⊙     |
| 0404-212 | Feathering spindle (FFZ)                | 1        | 1,000                     |                                     |       | ⊙     | ⊙     |
| 0404-213 | Seesaw (FFZ)                            | 1        | 2,200                     |                                     |       | ⊙     | ⊙     |
| 0404-214 | Center hub (FFZ)                        | 1        | 4,000                     |                                     |       | ⊙     | ⊙     |
| 0404-215 | FFZ rotor head assembly                 | 1        | 19,800                    | Rotor head complete                 |       | ⊙     | ⊙     |

# SST-CONDOR - 2

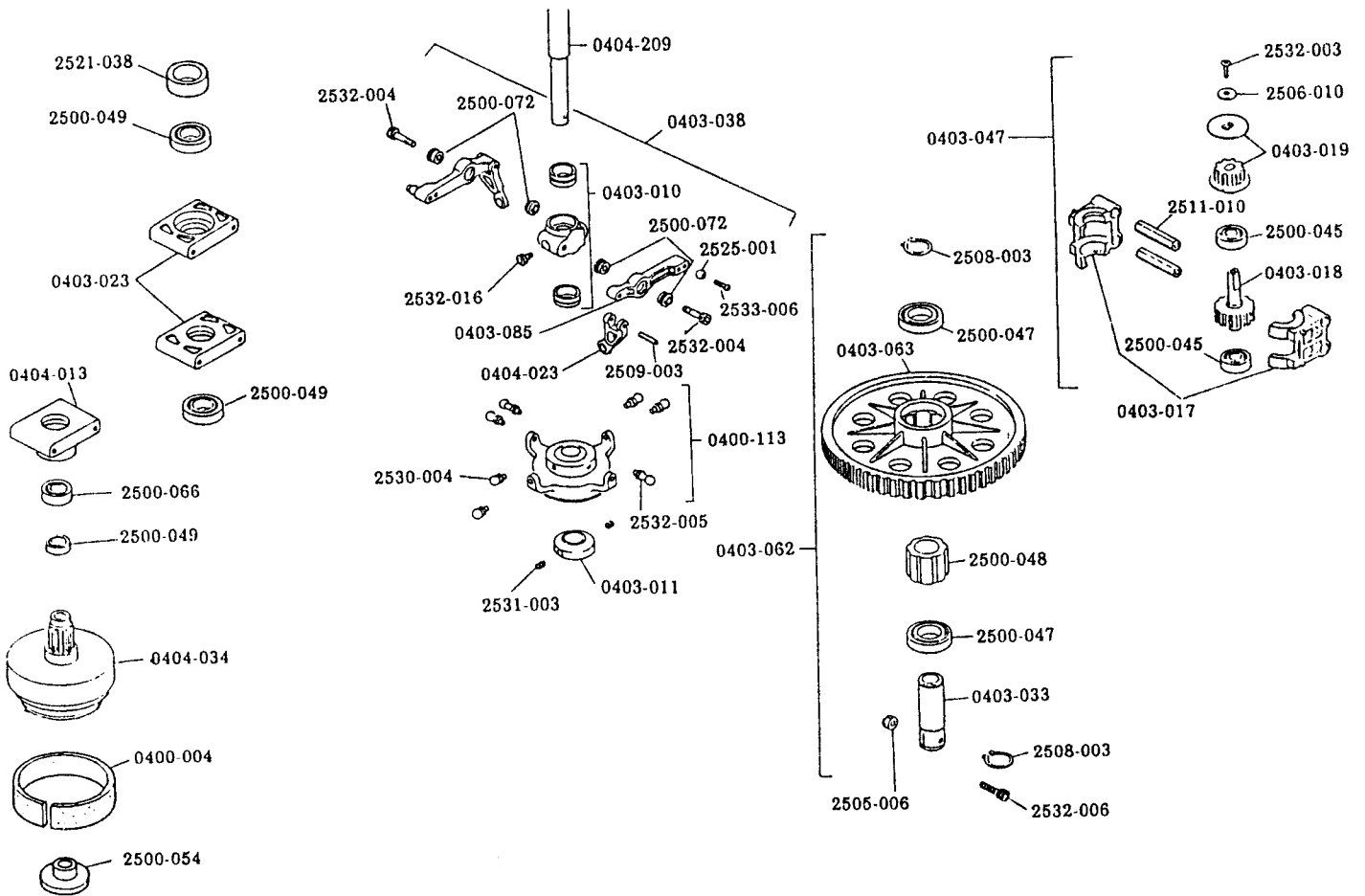
HIROBO LIMITED

## SSR-III Rotor head



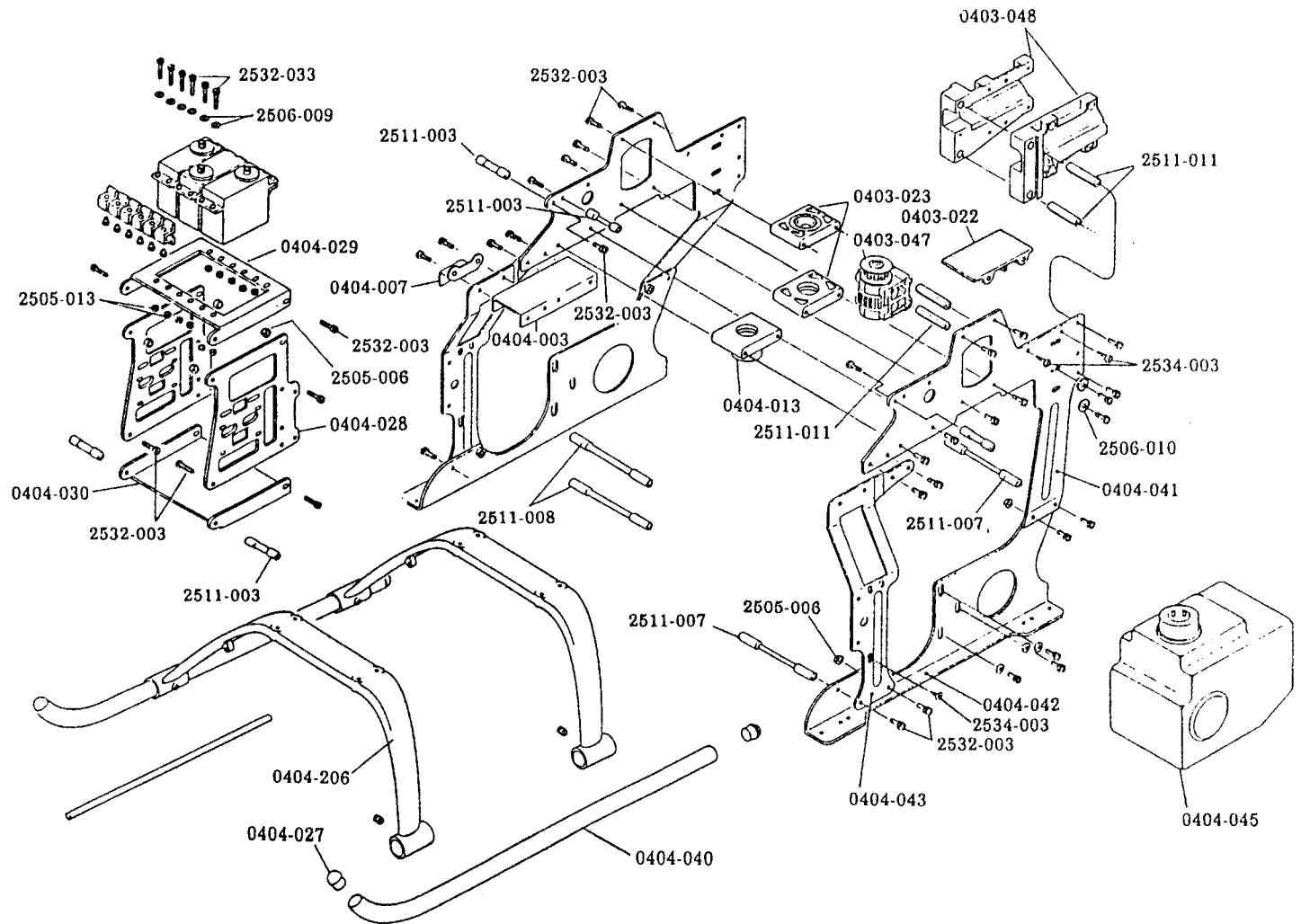
| Code No. | Name of parts                                 | Quantity | Japanese retail price (¥) | Remarks | SST-E | SST-C | BBZ-S |
|----------|---|----------|---------------------------|---------|-------|-------|-------|
| 0401-002 | Seasaw  | 1        | 2,200                     |         |       |       |       |
| 0401-004 | Stabilizer control arm                        | 2        | 1,200                     |         |       |       |       |
| 0402-006 | Damper rubber                                 | 4        | 400                       |         |       |       |       |
| 0403-081 | Stabilizer bar                                | 2        | 1,000                     |         |       |       |       |
| 0404-001 | Mixing arm (with bearing)                     | 1        | 1,500                     |         |       |       |       |
| 0404-089 | SSR feathering spindle                        | 1        | 2,800                     |         |       |       |       |
| 0404-207 | Semi-symmetrical main blade with weight L=655 | 2        | 4,500                     |         |       |       |       |
| 0404-208 | Stabilizer blade                              | 2        | 1,600                     |         |       |       |       |
| 0404-216 | FFZ pitch arm                                 | 2        | 800                       |         |       |       |       |
| 0404-221 | SSR- II Center hub                            | 1        | 4,000                     |         |       |       |       |
| 0404-222 | SSZ yoke side plate                           | 2        | 4,000                     |         |       |       |       |
| 0404-223 | Damper inner collar set                       | 2        | 350                       |         |       |       |       |
| 0404-233 | Holder plate                                  | 1        | 2,000                     |         |       |       |       |
| 0404-234 | Holder block                                  | 1        | 3,000                     |         |       |       |       |
| 0404-236 | SSR- III R/H assembly                         | 1 set    | 29,800                    |         |       |       |       |

Wash-out



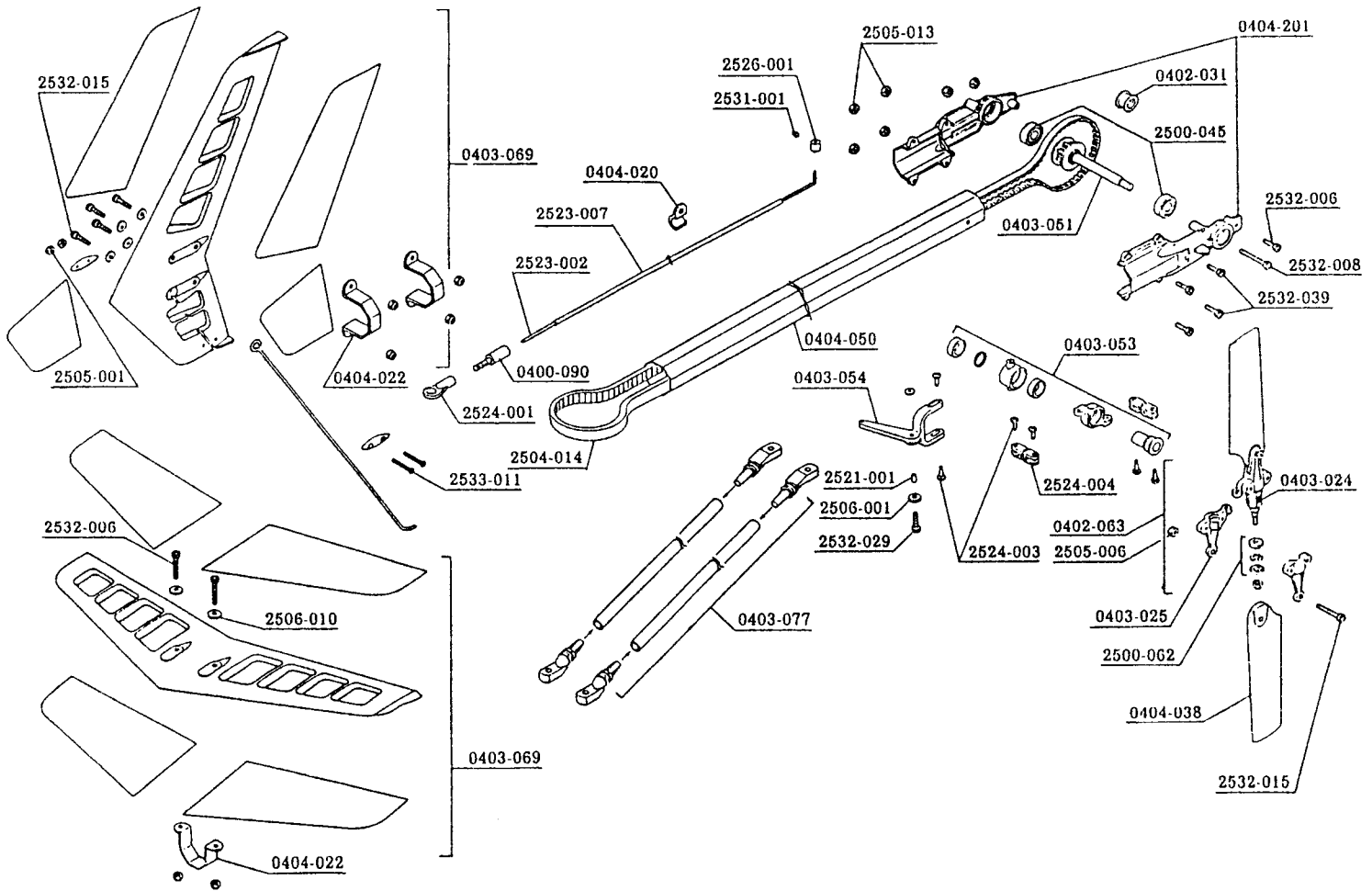
| Code No. | Name of parts                    | Quantity | Japanese retail price (¥) | Remarks        | SST-E | SST-C | BBZ-S |
|----------|----------------------------------|----------|---------------------------|----------------|-------|-------|-------|
| 0400-004 | Metal made clutch bell lining    | 2        | 200                       | Pre-assembled  | ⊙     | ⊙     |       |
| 0400-113 | Coaxial swash assembly           | 1 set    | 7,500                     |                | ⊙     | ⊙     | ⊙     |
| 0403-010 | Slide block set                  | 1        | 1,000                     | With bushing   | ⊙     | ⊙     | ⊙     |
| 0403-011 | Mast lock                        | 1        | 300                       |                | ⊙     | ⊙     | ⊙     |
| 0403-017 | Counter gear case                | 2        | 800                       |                | ⊙     | ⊙     | ⊙     |
| 0403-018 | Counter gear 18T                 | 1        | 1,300                     |                | ⊙     | ⊙     | ⊙     |
| 0403-019 | Timing pulley 9T                 | 1        | 300                       |                | ⊙     | ⊙     | ⊙     |
| 0403-023 | Bearing holder set               | 1 set    | 800                       | 6800×2, 696×1  |       | ⊙     | ⊙     |
| 0403-033 | Auto rotation drive shaft        | 1        | 1,800                     | With stop ring |       | ⊙     | ⊙     |
| 0403-038 | W-type wash-out                  | 1 set    | 3,000                     | Pre-assembled  |       | ⊙     | ⊙     |
| 0403-047 | Counter gear set                 | 1 set    | 3,800                     |                | ⊙     | ⊙     | ⊙     |
| 0403-062 | Main gear with auto rotation 97T | 1 set    | 5,000                     |                |       | ⊙     | ⊙     |
| 0403-063 | Main gear 97T                    | 1        | 1,200                     | Pre-assembled  |       | ⊙     | ⊙     |
| 0403-085 | W-type wash-out control arm      | 2        | 350                       |                |       | ⊙     | ⊙     |
| 2511-010 | Hexagon cross member L=26        | 2        | 400                       |                | ⊙     | ⊙     | ⊙     |
| 0404-013 | W-type bearing holder φ19        | 1        | 1,500                     |                | ⊙     | ⊙     | ⊙     |
| 0404-023 | Radius arm                       | 2        | 300                       |                | ⊙     | ⊙     | ⊙     |
| 0404-034 | Clutch bell with gear            | 1 set    | 4,500                     | Pre-assembled  | ⊙     | ⊙     |       |
| 0404-209 | Main mast (L=178)                | 1        | 1,000                     |                |       | ⊙     | ⊙     |

Main frame



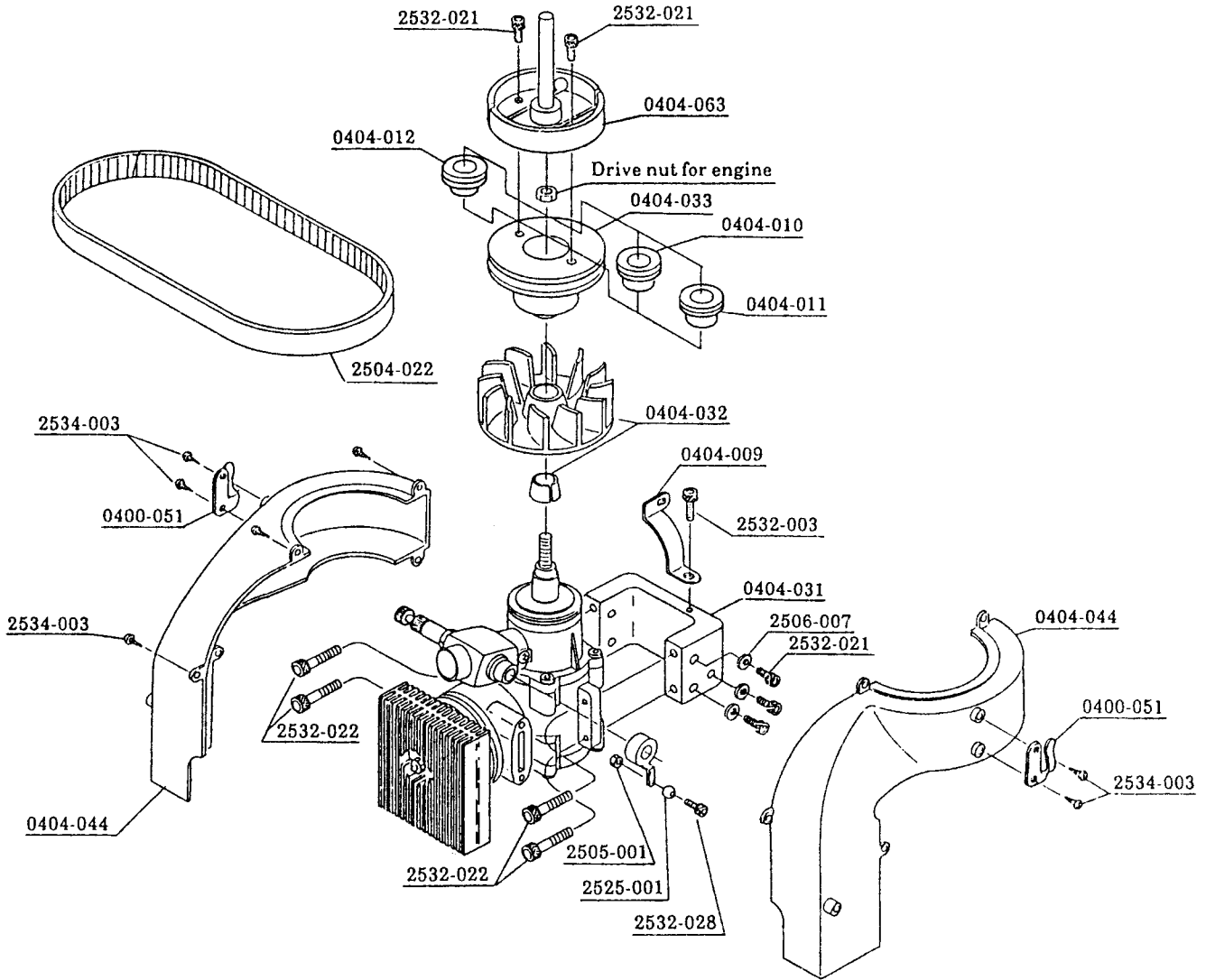
| Code No. | Name of parts                  | Quantity     | Japanese retail price (¥) | Remarks                   | SST-E | SST-C | BBZ-S |
|----------|--------------------------------|--------------|---------------------------|---------------------------|-------|-------|-------|
| 0403-022 | Gyro mount                     | 1            | 300                       |                           |       | ○     | ○     |
| 0403-048 | Tail boom holder               | 1 for each   | 1,200                     | (R) (L) each 1            | ○     | ○     | ○     |
| 2511-010 | Hexagon cross member L=26      | 2            | 400                       |                           | ○     | ○     | ○     |
| 0404-003 | Front cross member block       | 1            | 1,500                     |                           | ○     | ○     |       |
| 2511-007 | Cross member M3×64             | 2            | 500                       | Old code No. 0404-004     | ○     | ○     |       |
| 2511-003 | Cross member M3×26             | 2            | 500                       | Old code No. 0404-005     | ○     | ○     | ○     |
| 2511-008 | Cross member M3×69             | 2            | 500                       | Old code No. 0404-006     | ○     | ○     |       |
| 0404-007 | Servo mount (C)                | 2            | 500                       |                           |       | ○     |       |
| 2511-004 | Cross member M3×38             | 2            | 500                       | Old code No. 0404-008     | ○     |       |       |
| 0404-027 | Skid pipe cap                  | 4            | 300                       |                           | ○     | ○     | ○     |
| 0404-028 | Servo mount support            | Discontinued |                           | Use 0404-305              | ○     | ○     |       |
| 0404-029 | Servo mount (A)                | 1            | 800                       |                           | ○     | ○     |       |
| 0404-030 | Servo mount (B)                | Discontinued |                           | Use 0404-305 and 0404-306 | ○     | ○     |       |
| 0404-040 | Skid pipe                      | 2            | 1,000                     |                           | ○     | ○     | ○     |
| 0404-041 | Main frame (A)                 | Discontinued |                           | (R) (L) Use 0404-302      | ○     | ○     |       |
| 0404-042 | Main frame (B)                 | Discontinued |                           | (R) (L) Use 0404-111      | ○     | ○     |       |
| 0404-043 | Main frame (C)                 | Discontinued |                           | (R) (L) Use 0404-111      | ○     | ○     |       |
| 0404-045 | Fuel tank 420cc                | Discontinued |                           | Use 0404-112              |       |       |       |
| 0404-205 | Landing gear assembly (Condor) | 1 set        | 2,500                     |                           | ○     | ○     | ○     |
| 0404-206 | Skid foot                      | 1            | 1,000                     |                           | ○     | ○     | ○     |

## Tail unit



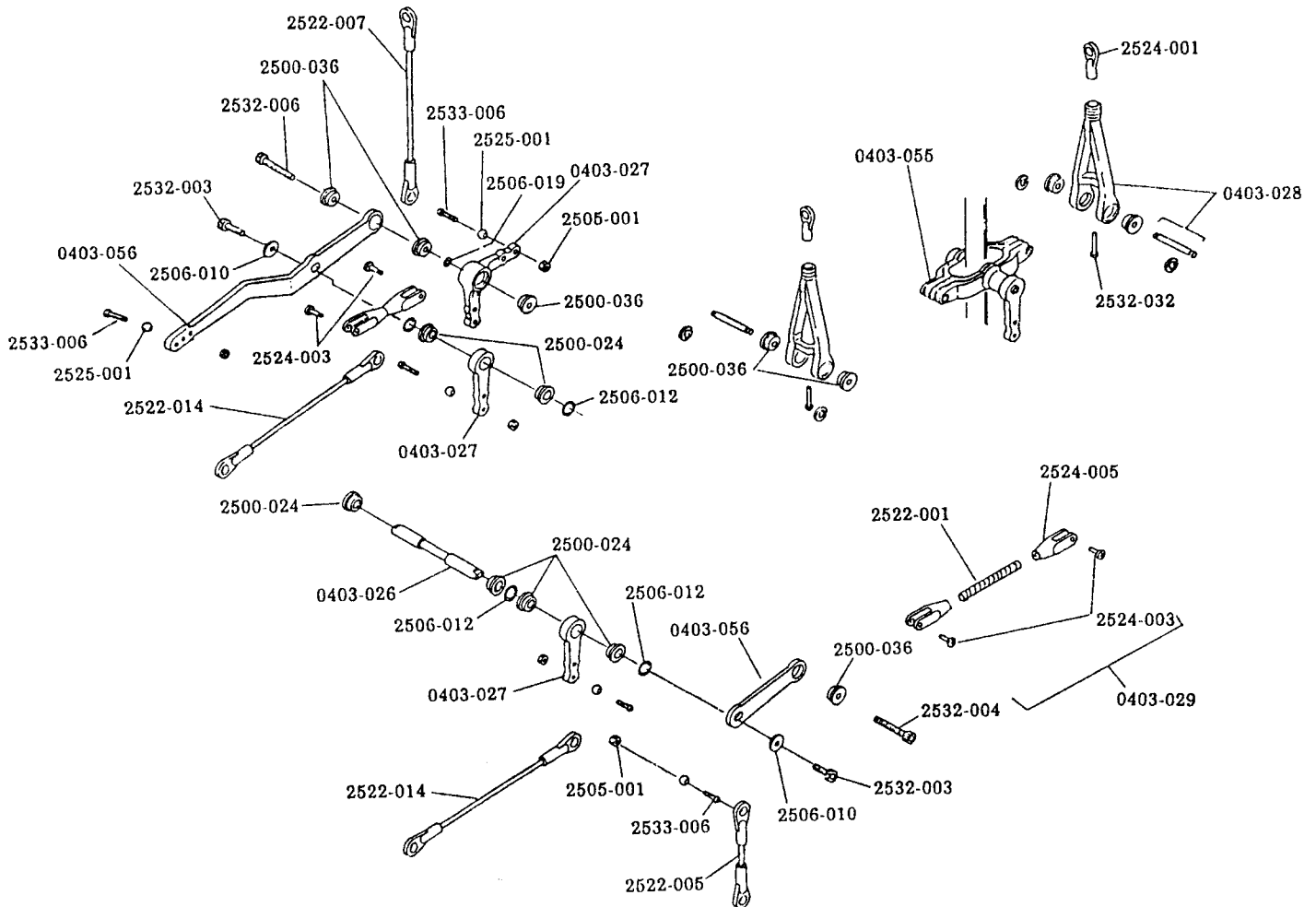
| Code No. | Name of parts                        | Quantity   | Japanese retail price (¥) | Remarks                       | SST-E | SST-C | BBZ-S |
|----------|--------------------------------------|------------|---------------------------|-------------------------------|-------|-------|-------|
| 2523-007 | Rudder control pipe                  | 10         | 2,500                     |                               | ⊙     | ⊙     | ⊙     |
| 0400-090 | Adjust joint (B)                     | 5          | 500                       |                               | ⊙     | ⊙     |       |
| 0402-031 | Guide pulley                         | 1          | 800                       |                               |       | ⊙     | ⊙     |
| 0402-063 | Tail housing assembly                | 1 set      | 2,500                     |                               |       | ⊙     | ⊙     |
| 0403-024 | Tail housing                         | 1          | 600                       |                               |       | ⊙     | ⊙     |
| 0403-025 | Tail blade holder                    | 2 for each | 300                       | (A) (B) each 2                |       | ⊙     | ⊙     |
| 0403-051 | Tail shaft                           | 1          | 700                       | With 9T pulley                |       | ⊙     | ⊙     |
| 0403-053 | Tail pitch plate                     | 1 set      | 2,500                     | Pre-assembled                 |       | ⊙     | ⊙     |
| 0403-054 | Tail pitch lever                     | 1          | 400                       |                               |       | ⊙     | ⊙     |
| 0403-069 | Stabilizer set                       | 1 set      | 1,500                     | Horizontal, Vertical and film | ⊙     | ⊙     | ⊙     |
| 0403-077 | Tail boom brace set                  | 1 set      | 1,000                     |                               | ⊙     | ⊙     | ⊙     |
| 0404-020 | Pipe clamp bracket                   | 2          | 250                       |                               | ⊙     | ⊙     | ⊙     |
| 0404-022 | Pipe band                            | 3          | 500                       |                               | ⊙     | ⊙     | ⊙     |
| 0404-038 | Semi-symmetrical tail blade<br>L=105 | 2          | 600                       |                               | ⊙     | ⊙     | △     |
| 0404-050 | Octagonal tail boom pipe L=735       | 1          | 1,600                     | L=735                         | ⊙     | ⊙     |       |
| 0404-201 | Tail unit case                       | 1 for each | 800                       | (R) (L)                       |       | ⊙     | ⊙     |

Engine unit



| Code No. | Name of parts                  | Quantity     | Japanese retail price (¥) | Remarks           | SST-E | SST-C | BB2-S |
|----------|--------------------------------|--------------|---------------------------|-------------------|-------|-------|-------|
| 0400-051 | Starting hook set              | 1 for each   | 500                       | (R) (L)           | ⊙     | ⊙     |       |
| 2504-022 | Starting belt MB-400           | 1            | 600                       |                   | ⊙     | ⊙     | ⊙     |
| 0404-009 | Cooling cover setting bracket  | 1            | 300                       |                   | ⊙     | ⊙     |       |
| 0404-010 | Starter pulley washer for OS   | 1            | 300                       |                   | ⊙     | ⊙     |       |
| 0404-011 | Starter pulley washer for ENYA | 1            | 300                       |                   | ⊙     | ⊙     |       |
| 0404-012 | Starter pulley washer for YS   | 1            | 300                       |                   | ⊙     | ⊙     |       |
| 0404-031 | SST engine mount               | Discontinued |                           | Use 0404-307      | ⊙     | ⊙     |       |
| 0404-032 | Cooling fan set                | 1            | 2,000                     | With taper collar | ⊙     | ⊙     |       |
| 0404-033 | Starter pulley                 | 1            | 3,000                     |                   | ⊙     | ⊙     |       |
| 0404-044 | Divisional type cooling cover  | 1 for each   | 1,500                     | (R) (L)           | ⊙     | ⊙     |       |
| 0404-063 | Clutch shoe with shaft         | 1            | 3,000                     |                   | ⊙     | ⊙     |       |

Pitch up

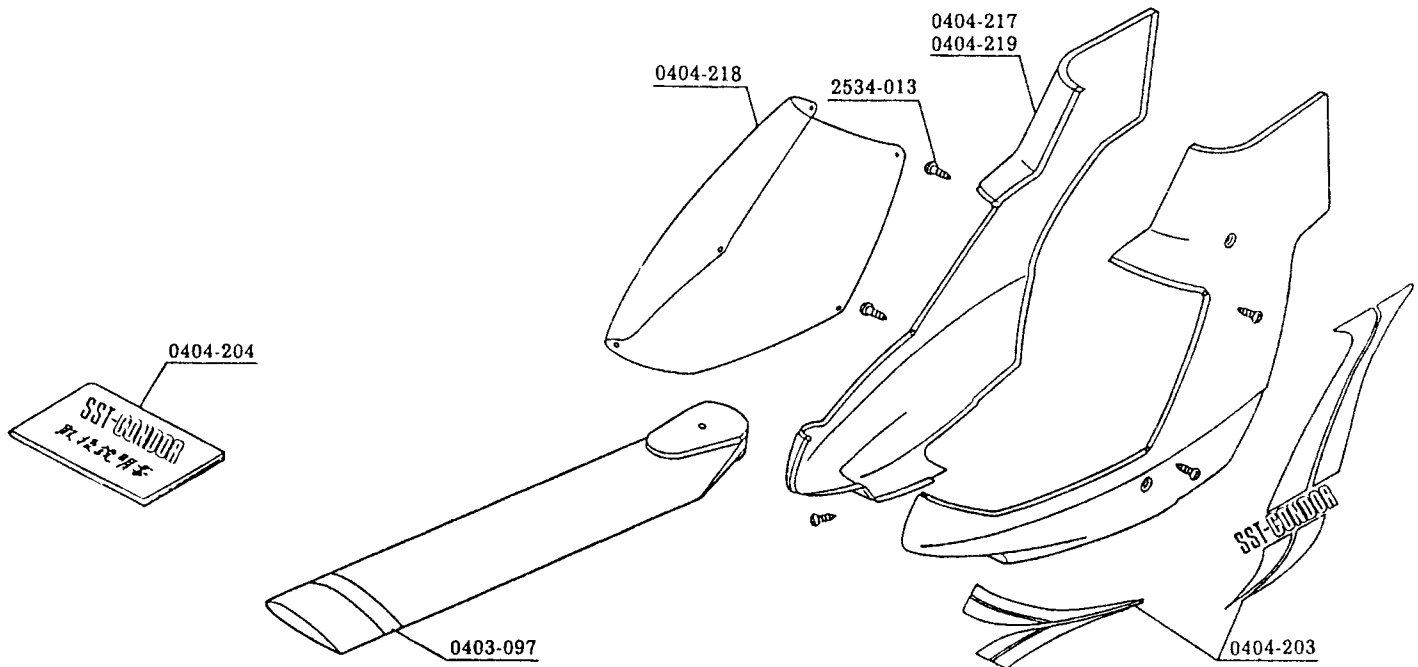


| Code No. | Name of parts              | Quantity   | Japanese retail price (¥) | Remarks             | SST-E | SST-C | BBZ-S |
|----------|----------------------------|------------|---------------------------|---------------------|-------|-------|-------|
| 0403-026 | Pitch lever shaft          | 1          | 350                       |                     |       | ⊙     | ⊙     |
| 0403-027 | L and I-type lever set     | 1 set      | 600                       | L-type×1, I-type×1  |       | ⊙     | ⊙     |
| 0403-028 | Elevator rod set           | 1 set      | 600                       | With pin and E-ring |       | ⊙     | ⊙     |
| 0403-055 | Elevator lever             | 1          | 500                       |                     |       | ⊙     | ⊙     |
| 0403-056 | Collective pitch lever set | 1 for each | 800                       | (A) (B)             | ⊙     | ⊙     | ⊙     |

# SST-CONDOR - 8

HIROBO LIMITED

Cabin · Others



| Code No. | Name of parts                           | Quantity     | Japanese retail price (¥) | Remarks         | SST-E | SST-C | BBZ-S |
|----------|---|--------------|---------------------------|-----------------|-------|-------|-------|
| 0404-218 | Windshield                              | 1            | 1,600                     |                 | △     | ◎     | ◎     |
| 0404-217 | Cabin                                   | 1            | 6,000                     | (R) (L)         | △     | ◎     | ◎     |
| 0403-097 | Tracking tape                           | 1            | 500                       |                 | ◎     | ◎     | ◎     |
| 0404-203 | SST-CONDOR decal set                    | 1            | 800                       |                 |       | ◎     | ◎     |
| 0404-204 | SST-CONDOR instruction manual           | 1            | 1,000                     |                 |       | ◎     |       |
| 2513-002 | L-type wrench set                       | 1 for each   | 200                       | 1.5 2.0 2.5 3.0 | ◎     | ◎     | ◎     |
| 2534-013 | Tapping screw M2.6×6 truss No.2 type    | 10           | 200                       |                 |       | ◎     | ◎     |
|          | Optional parts                          |              |                           |                 |       |       |       |
| 0400-018 | Counter gear 17T                        | 1            | 1,500                     |                 | ◎     |       |       |
| 0400-124 | 50-61 square type side exhaust muffler  | 1 set        | 6,200                     |                 | ◎     | ◎     |       |
| 0400-125 | Blade balancer                          | Discontinued |                           |                 |       |       |       |
| 0401-095 | Rear exhaust muffler for SST            | 1 set        | 500                       |                 | ◎     | ◎     |       |
| 0401-103 | Side exhaust muffler for OS61SFH        | 1 set        | 6,200                     |                 | ◎     | ◎     |       |
| 0401-104 | Muffler adapter for OS61SFH             | 1            | 1,200                     |                 | ◎     | ◎     |       |
| 0403-087 | L-type lever with bearing               | 1 set        | 1,800                     |                 | ◎     | ◎     |       |
| 0403-088 | I-type lever with bearing               | 1 set        | 1,800                     |                 |       | ◎     | ◎     |
| 0403-089 | Elevator rod with bearing               | Discontinued |                           |                 |       |       |       |
| 0403-090 | Collective pitch lever set with bearing | Discontinued |                           | (A) (B)         |       |       |       |
| 0403-091 | W-type wash-out with bearing            | Discontinued |                           |                 |       |       |       |
| 0403-098 | Decal for identification numbers        | 1            | 500                       |                 | ◎     | ◎     | ◎     |
| 0403-101 | Starter cone                            | 1            | 1,000                     |                 | △     | △     | △     |
| 0403-102 | Linkage bearing set                     | Discontinued |                           |                 |       |       |       |
| 0403-105 | Drag metal                              | Discontinued |                           |                 |       |       |       |
| 0404-014 | Metal made 6800 bearing holder ø19      | 1            | 1,000                     |                 | ◎     | ◎     | ◎     |
| 0404-053 | Thrust bearing holder (With thrust)     | 1 set        | 3,000                     |                 | ◎     | △     | △     |
| 2511-009 | Cross member M3×74                      | 1            | 600                       |                 | ◎     | ◎     | ◎     |
| 0404-055 | EX W-type wash-out                      | 1 set        | 5,500                     |                 | ◎     | ◎     | ◎     |
| 0404-060 | Cone starter clutch set                 | 1 set        | 3,000                     |                 | △     | △     | △     |