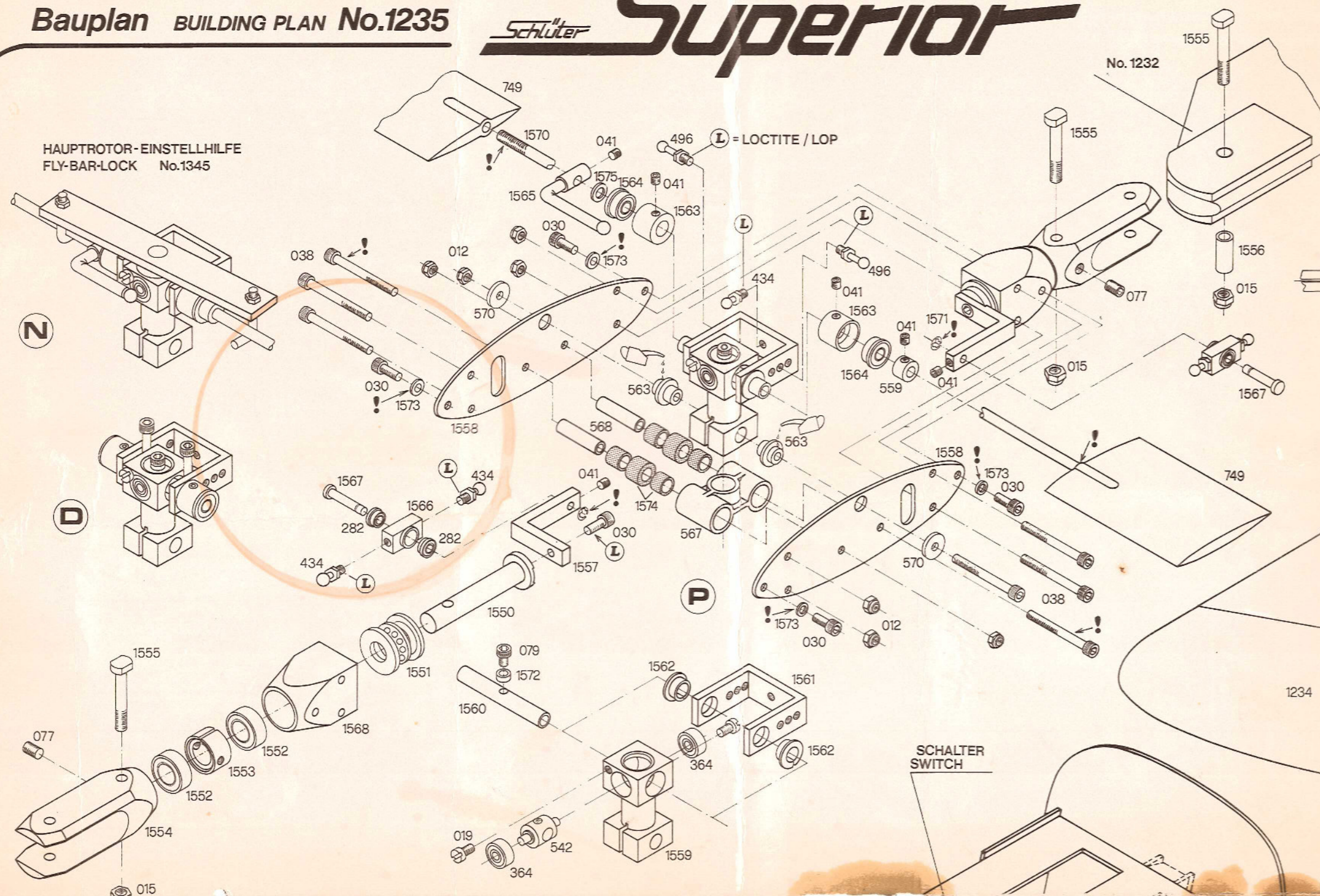
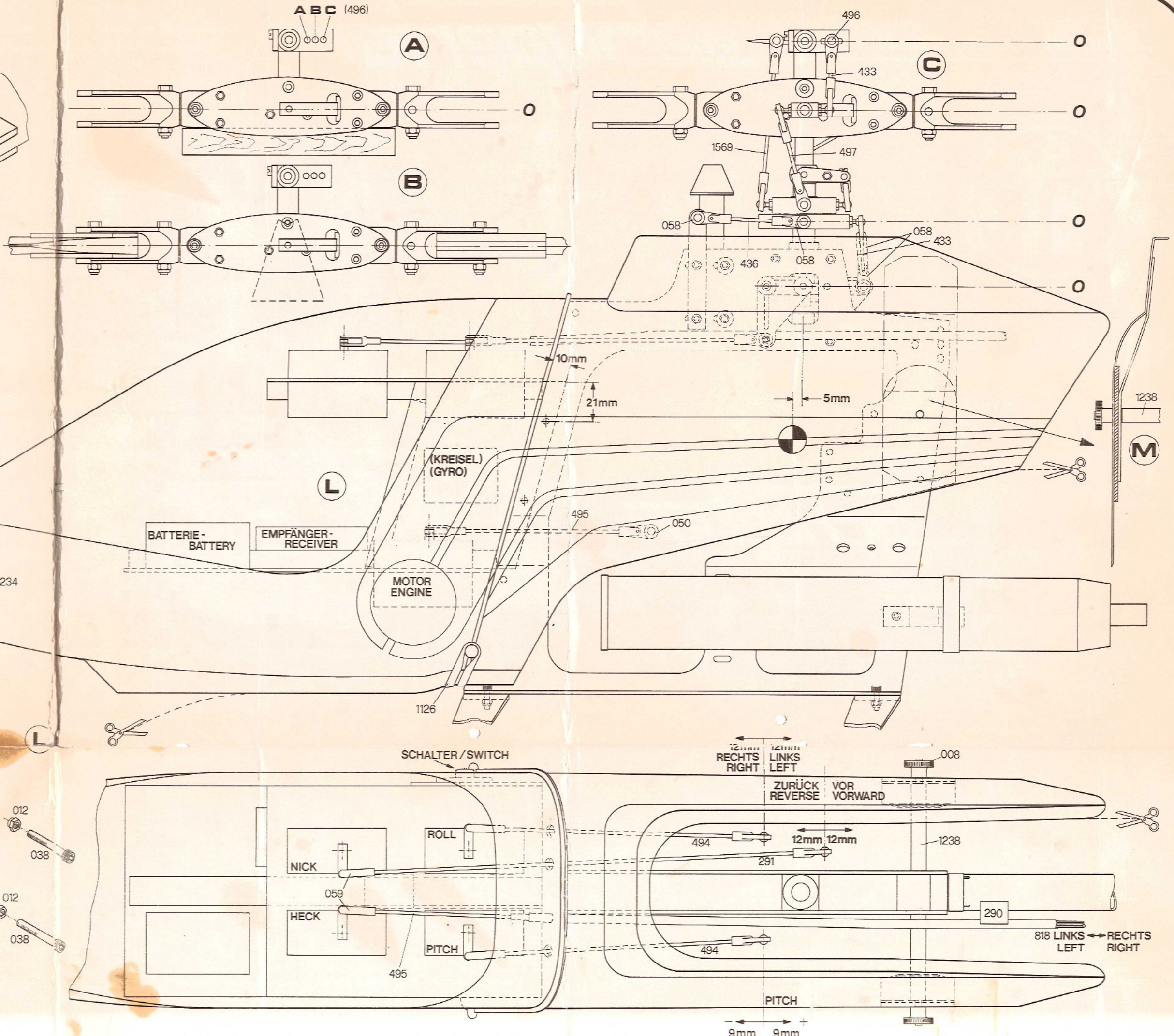
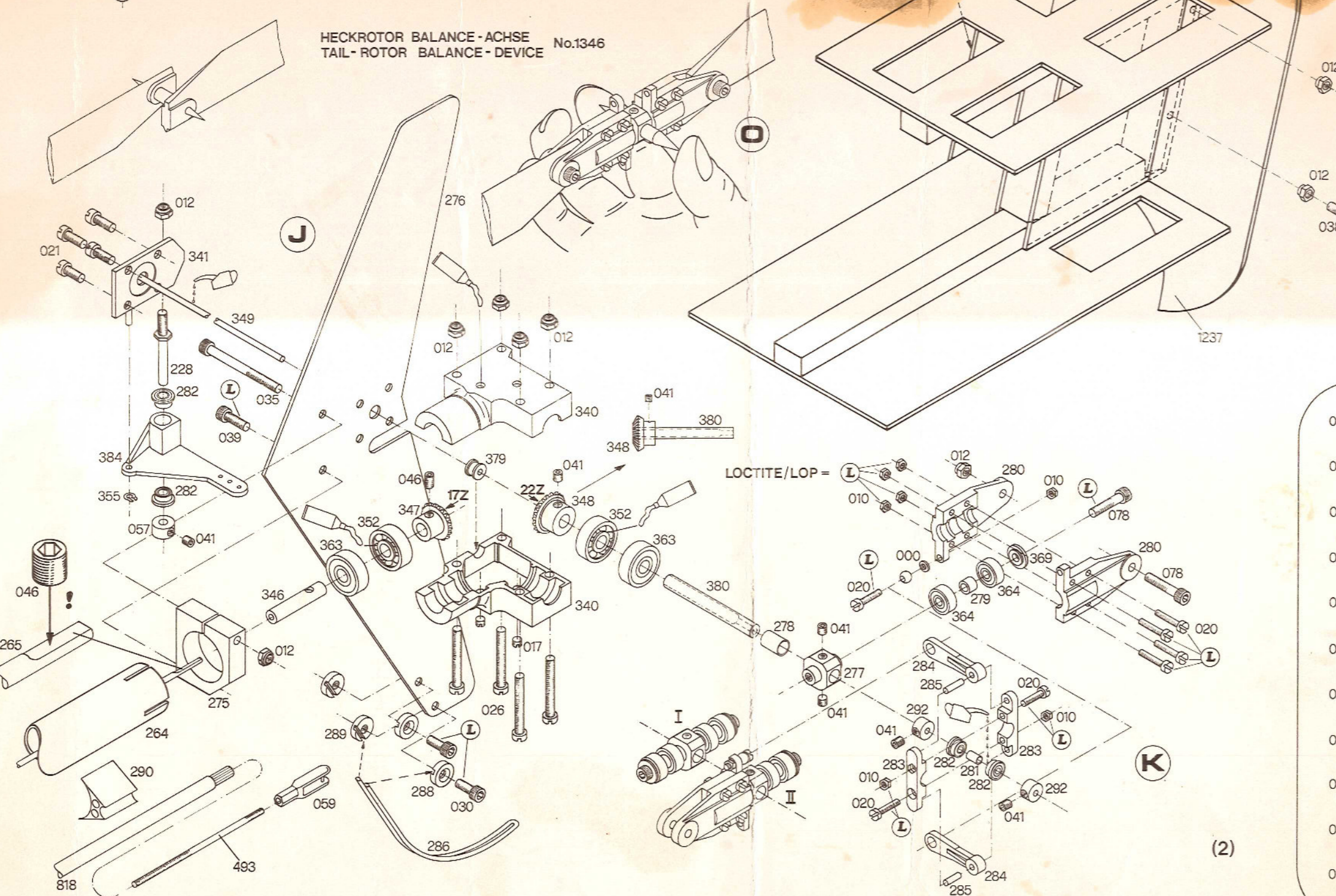


HAUPTROTOR-EINSTELLHILFE
FLY-BAR-LOCK No.1345



HECKROTOR BALANCE-ACHSE
TAIL-ROTOR BALANCE-DEVICE No.1346



COPYRIGHT BY ING. D. SCHLÜTER 6052 MÜHLHEIM/M WEST GERMANY

080	M 2 x 10	029	M 2 x 8	033	M 4 x 10	010	M 2	000	2,2/5 Ø x 0,4
079	M 3 x 5	020	2 x 10	034	4 x 15	011	M 3	065	2,7/8 Ø x 0,6
030	3 x 8	028	2 x 12	049	4 x 20	013	M 4	001	3,2/7 Ø x 0,5
039	3 x 10	070	2 x 20	048	4 x 30	012	M 3 Stop	007	3,2/9 Ø x 0,8
073	3 x 12	019	M 3 x 5	041	M 3 x 3	015	M 4 Stop	1573	3,2/8 Ø x 1
031	3 x 15	021	3 x 8	046	M 3 x 5	069	M 3 x 10	1280	3,1/10 Ø x 1
078	3 x 16	022	3 x 10	072	M 3 x 8	042	2,2 Ø x 6,5	1575	4,1/7 Ø x 0,8
036	3 x 20	023	3 x 15	040	M 2,6 x 4	075	2,2 Ø x 9,5	002	4,3/9 Ø x 0,8
037	3 x 25	024	3 x 20	017	M 3,5 x 3	044	2,9 Ø x 9,5	005	6,4/12,5 Ø x 1,5
038	3 x 30	026	3 x 25	077	M 4 x 5	043	2,9 Ø x 13	006	7,4/14 Ø x 1,5
035	3 x 35	027	3 x 30	076	M 4 x 25	045	2,9 Ø x 22		