

CONTENTS

INTRODUCTION.....	II
IMPORTANT NOTES AND SAFETY CHECK BEFORE FLY.....	II-III
WARNING AND TECHNICAL PARAMETERS.....	III-IV
1. MAIN FRAME ASSEMBLY 1.....	P1
1-1 CLUTCH BELL ASSEMBLY.....	P2
1-2 GUIDE PULLEY ASSY ASSEMBLY.....	P2
2. MAIN FRAME ASSEMBLY 2.....	P3
3. MAIN FRAME ASSEMBLY 3.....	P4
3-1 T-ARM LEBET ASSEMBLY.....	P5
3-2 TAIL BELL CRANK INSTALLATION.....	P5
4. MAIN FRAME ASSEMBLY 4.....	P6
4-1 ELEVATOR ARM ASSEMBLY.....	P7
5. MAIN FRAME ASSEMBLY 5.....	P8
5-1 FUEL TANK ASSEMBLY.....	P8
6. MAIN FRAME ASSEMBLY 6.....	P9
6-1 FAN SHroud SET ASSEMBLY.....	P9
7. MAIN FRAME ASSEMBLY 7.....	P10
8. COOLING FAN AND ENGINE ASSEMBLY	P10
8-1 ENGINE ASSEMBLY.....	P11
9. LANDING STRUT ASSEMBLY.....	P11
10. MAIN GEAR AND MAIN FRAME ASSEMBLY.....	P12
10-1 SOUBLE MAIN DRIE GEAR ASSEMBLY.....	P12
11. MAIN SHAFT ASSY ASSEMBLY.....	P13
11-1 SWASH PLATE ASSEMBLY.....	P13
11-2 WASHOUT BASE ASSEMBLY.....	P14
11-3 ROTOR HEAD、 MIXING ARM AND BLADE ASSEMBLY.....	P14
11-4 MAIN BLADE HOLDER ASSEMBLY.....	P15
11-5 MIXING ARM ASSEMBLY.....	P15
11-6 ROTOR HEAD ASSEMBLY.....	P16
11-7 MIXING ARM AND MAIN BLADE HOLDER ASSEMBLY.....	P17
12. TAIL DRIBING ASSEMBLY.....	P17
13. TALL BOOM BRACE INSTALLATION	P18
13-1 TAIL CASE ASSEMBLY.....	P19
13-2 TAIL BLADE ASSEMBLY.....	P20
13-3 TAIL CASE AND TAIL BLADE ASSEMBLY.....	P21

14. CONTROL TOD ASSEMBLY 1.....	P22
15. CONTROL TOD ASSEMBLY 2.....	P23
16. CONTROL TOD ASSEMBLY 3.....	P24
17. CANOPY ASSEMBLY.....	P25

A letter to customers

Dear Customers:

Thank you for your selection of our TZV2 50 helicopters. Getting your preference and patronage is our company's honour. At the same time of thanking you for your buying our products, our company sincerely serve you. It's our unshrinkable responsibility, letting you to enjoy best after-sales service. In accordance with the business concept the "most sincere service can move god" , For your more convince and ease of using this model helicopter, Please read this instruction manual in detail.

Flying model helicopter is a sport & leisure activity with strong technique. It is not a toy. Therefore, if you possess no good base of remote –control technique, it is suggested that you don't be eager to start the model helicopter for fly in sky .you should understand the performance of this product, learn from experts or be technical trained in model helicopter field and step by step become a excellent pilot of this model helicopter. We believe, that after you will have mastered the remote-control technique of this product, you will fondle admiringly, since it will bring you limitless joy.

CHENGDU JINGSHI R/C MODEL DEVELOPMENT CO., LTD.

Important Notes

R/C helicopters, including the TZV2 50 Nitro are not toys. R/C helicopter utilizes various high-tech products and technologies to provide superior performance. Improper use of this product can result in serious injury or even death. Please read this manual carefully before using and make sure to be conscious of your own personal safety as well as others and your environment when operating all TZ products. Manufacturer and seller assume no liability for the operation or the use of this product. Intending for use only by adults who have remote control helicopters flying experience at a legal flying field. After the sale of this product we can't maintain any control over its operation or usage.

We recommend that you obtain the assistance of an experienced pilot before attempting to fly our products for the first time. A local expert is the best way to properly assemble, setup, and fly your model for the first time. The TZ V2 50 Nitro requires a certain degree of skill to operate, and is a consumer item, any damage or dissatisfaction as a result of accidents or modifications are not covered by any warrantee and can't be returned for repair or replacement, please contact our distributors for free technical consultation and parts at discounted rates when you experience problems during operation or maintenance.

Safety Notes

Fly only in safe areas, away from other people. Don't operate R/C helicopter within the vicinity of homes or crowds of people, R/C helicopter prone to accidents, failures, and crashes due to a variety of reasons including, lack of maintenance, pilot error and radio interference. Pilots are responsible for their actions

and damage or injury occurring during the operation or as of a result of R/C helicopter models.

Safety check before fly

1. Before every time fly, you must perform a complete check to the body and mechanical part of this model helicopter, including every link head, every screw bolt, if a problem is found, you must immediately maintain it and exchange components.
 2. Before every time fly, you must check every movement direction of the model helicopter and movement amount being formed for normal. You must form such habit of operation sequence, before starting model helicopter, at first switch off receiver.
 3. Before every time fly, you must check the battery of remote controller and receiver for sufficiency for fly and check the servo of it for normal in order to avoid helicopter's danger out of control.
 4. Before fly, please investigate clearly whether if frequencies of remote-control of your model plane friends on fly identical to that of your helicopter remote-control. If identical please consult about fly sequence with your friend. One identical frequency start model planes at the same time, it will cause the danger of controller failure of both parties.
 5. Before starting helicopter, please confirm if the batteries of remote control and receiver are switched on, if the movement is normal, if throttle position is in lowest place, if the switcher for flameout and landing is switched off and if other passages' switchers are back to normal positions.
 6. After model helicopter is started, the rotation speeds of main rotor and tail rotor are very high, so anyone must be 10meters away from the helicopter.
 7. As a acceptable operator of remote –controlled helicopter, you must have safety concept and responsibility sense. Your fly must be responsible for safety of lives and properties of you selves and other people.

Warning

1. LOCATE AN APPROPRIATE LOCATION

R/C helicopters fly at high speed, thus posing a certain degree at potential danger. Choose a legal flying field consisting of flat, smooth ground without obstacles. Don't fly near buildings, high voltage cables, or trees to ensure the safety of yourself, others and your model. For the first practice, please choose a legal flying field and can use a training skid to fly for reducing the damage. Don't fly your model in inclement weather, such as rain, wind, snow or darkness.

2. PREVENT MOISTURE

R/C models are composed of many precision electrical components. It is critical to keep the model and associated equipment away from moisture and other contaminants. The introduction or exposure to water or moisture in any form can cause the model to malfunction resulting in loss of use, or a crash. Don't operate or expose to rain or moisture.

3. PROPER OPERATION

Please use the replacement of parts on the manual to ensure the safety of instructors. This products is for R/C model, so don't use for other purpose.

4. OBTAIN THE ASSISTANCE OF AN EXPERIENCED PILOT

The guidance provided by an experienced pilot will be invaluable for the assembly, tuning, trimming, and actual first flight. (Recommend you to practice with computer-based flight simulator).

5. SAFE OPERATION

Operate this unit within your ability. Don't fly under tired condition and improper operation may cause in danger.

6. ALWAYS BE AWARE OF THE ROTATING BLADES

During the operation of the helicopter, the main rotor and tail rotor will be spinning at a high rate of speed. The blades are capable of inflicting serious bodily injury and damage to the environment. Be conscious of your actions, and careful to keep your face, eyes, hands, and loose clothing away from the blades. Always fly the model at a safe distance from yourself and others, as well as surrounding objects. Never take your eyes off the model or leave it unattended while it is turned on, immediately turn off the model and transmitter when you have landed the model.

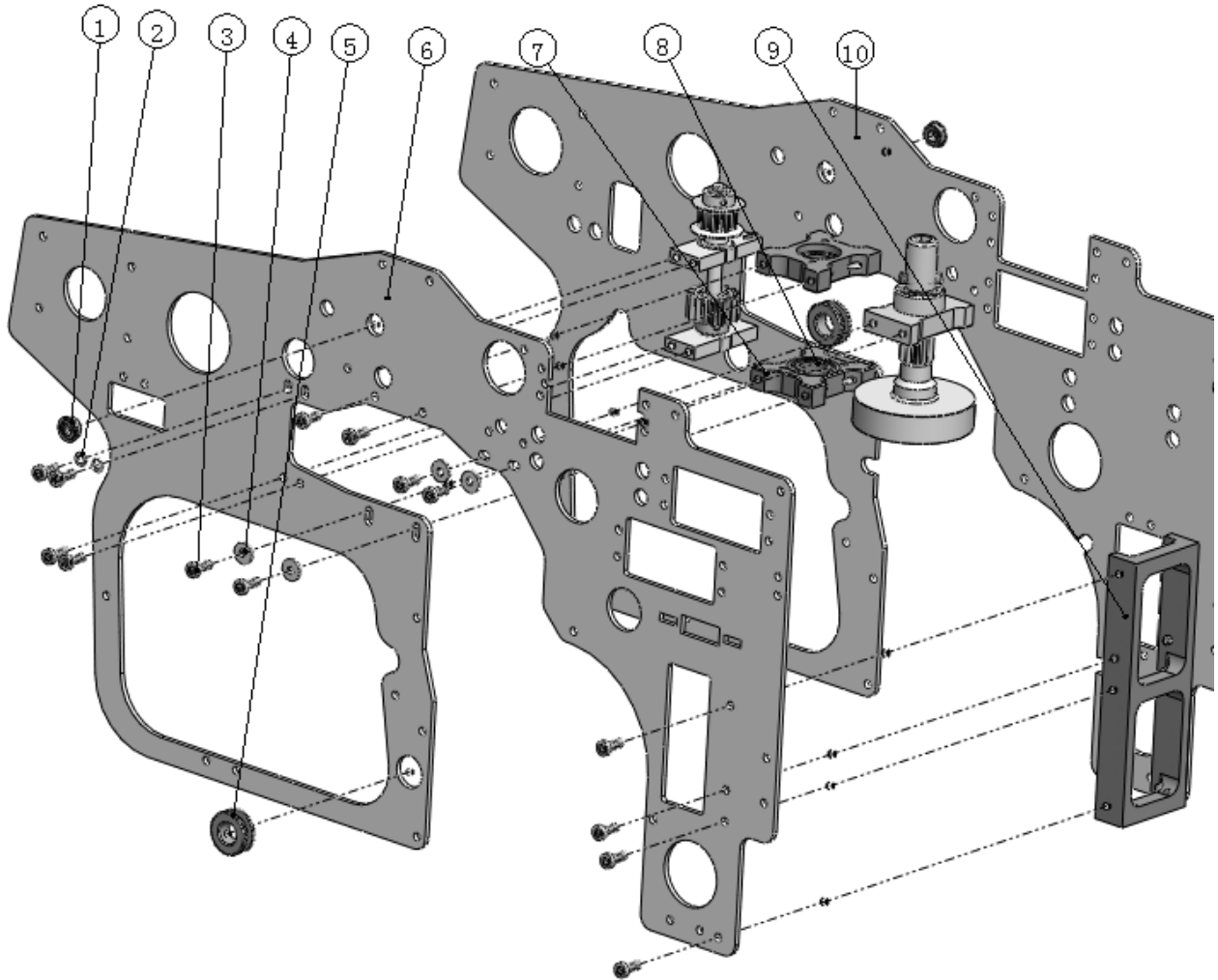
7. KEEP AWAY FROM HEAT

R/C models are made up various forms of plastic. Plastic is very susceptible to damage or deformation due to extreme heat and cold climate. Make sure not to store the model near any source of heat such as an oven, or heater. It is best to store the model indoors, in a climate-controlled, room temperature environment.

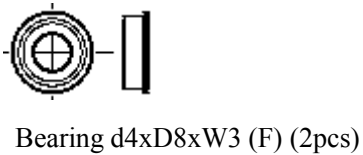
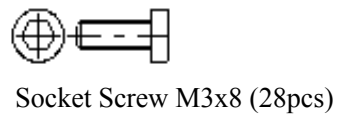
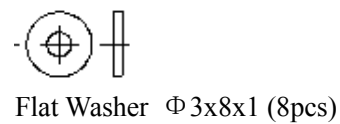
TECHNICAL PARAMETERS

SPECIFICATION	TZ V2 50
LENGTH	1247mm
HEIGHT	355mm
WIDTH	231mm
GEAR RATIO	STANDARD 8.5: 1 : 4.56
PINION GEAR	10T
MAIN GEAR	STANDARD 85T
MAIN ROTOR DIAMETER	STANDARD 1345mm-1365mm
TAIL ROTOR DIAMETER	242mm
MAIN ROTOR LENGTH	600mm-620mm
FULL EQUIPPED WEIGHT	3300g

1. MAIN FRAME ASSEMBLY 1

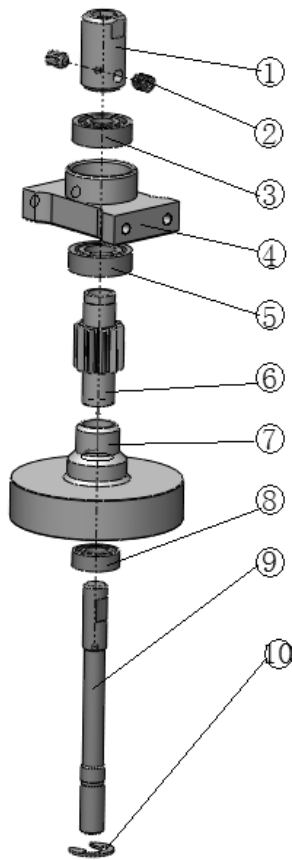


No.	Qty	Item No.	Parts Name
1	2	550-005	Bearing d4xD8xW3(F)
2	4	513-005	Flat Washer Φ 3x5x0.5
3	28	503-005	Socket Screw M3x8
4	8	513-011	Flat Washer Φ 3x8x1
5	2	290-073	Main Frame Grommet
6	1	154-081	Main Frame (R)
7	2	154-023	Bearing Case
8	2	528-002	Bearing d10xD19xW5
9	1	154-046	U-Beam cross Member
10	1	154-082	Main Frame (L)



NOTE: The assembly of side left is the same as side right!

1-1 CLUTCH BELL ASSEMBLY



No.	Qty	Item No.	Parts Name
1	1	122-80	Starter Coupling
2	2	507-025	Set Screw M4x5
3	1	524-005	Bearing d6xD13xW5
4	1	154-022	Start Shaft Bearing Block
5	1	526-006	Bearing d8xD16xW5
6	1	122-086	Drive Gear (10T)
7	1	122-071	Clutch Liner
8	1	524-002	Bearing d6xD12xW4
9	1	154-036	Starter Shaft
10	1	515-002	Retaining Ring Φ6

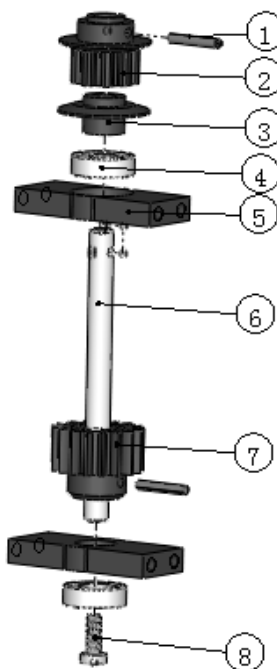


Bearing d6xD12xW4 (1pcs)



Retaining Ring Φ6 (1pcs)

1-2 DRIVE GEAR SHAFT ASSEMBLY

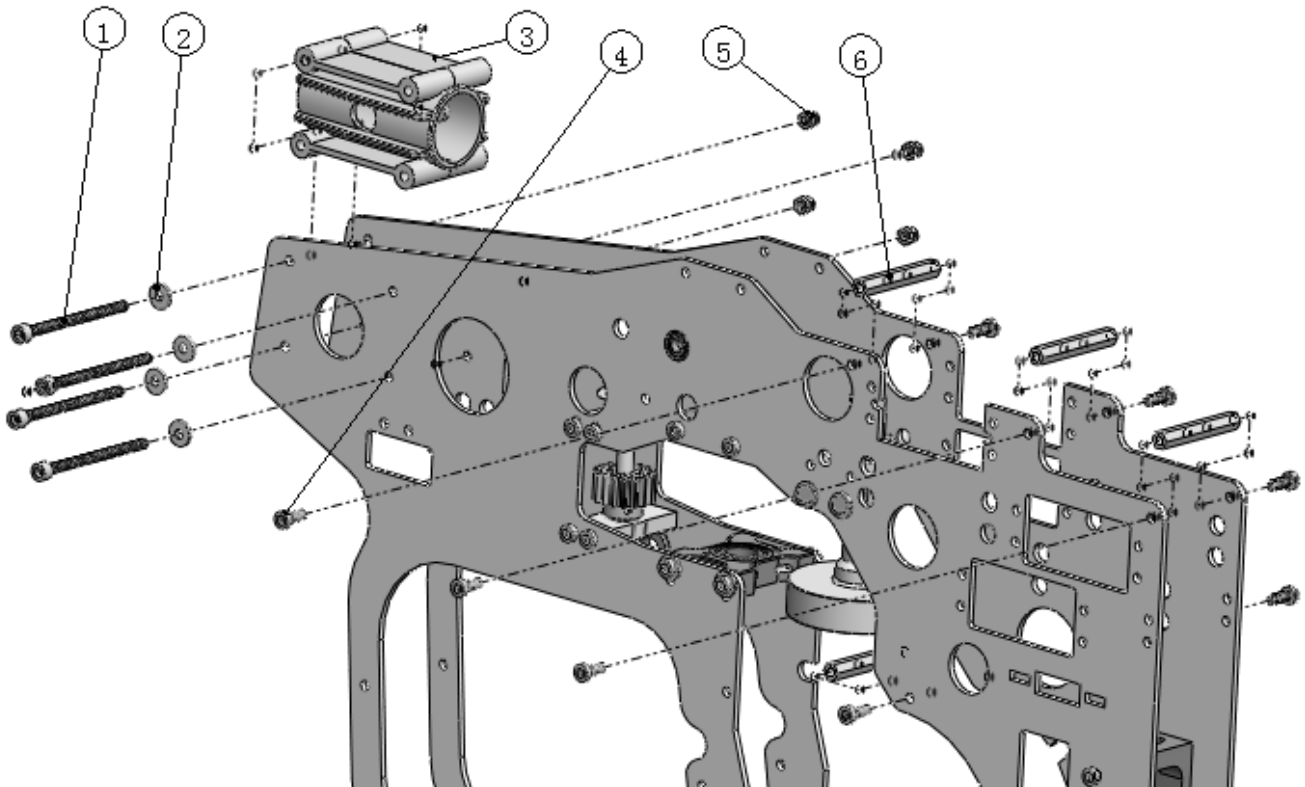


No.	Qty	Item No.	Parts Name
1	2	512-009	Pin Φ2x12
2	1	250-033	Tail Pulley Set
3	1	250-034	Tail Pulley Flange
4	2	523-007	Bearing d5xD13xW4
5	2	154-084	Main Shaft Bearing Block
6	1	154-086	Drive Gear Shaft
7	1	290-054	Drive Gear
8	1	503-002	Socket Screw M3x5

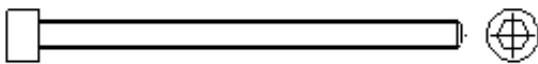


Bearing d5xD13xW4

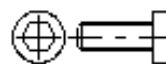
2. MAIN FRAME ASSEMBLY 2



No.	Qty	Item No.	Parts Name
1	4	503-020	Socket Screw M3x45
2	4	513-011	Flat Washer Φ 3x8x1
3	2	254-004	Tail Boom Holder
4	8	503-005	Socket Screw M3x8
5	4	511-001	Lock Nut M3
6	4	154-049	Metal Frame Spacer



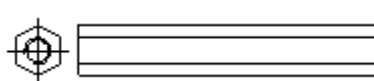
Socket Screw M3x45 (4pcs)



Socket Screw M3x8 (8pcs)

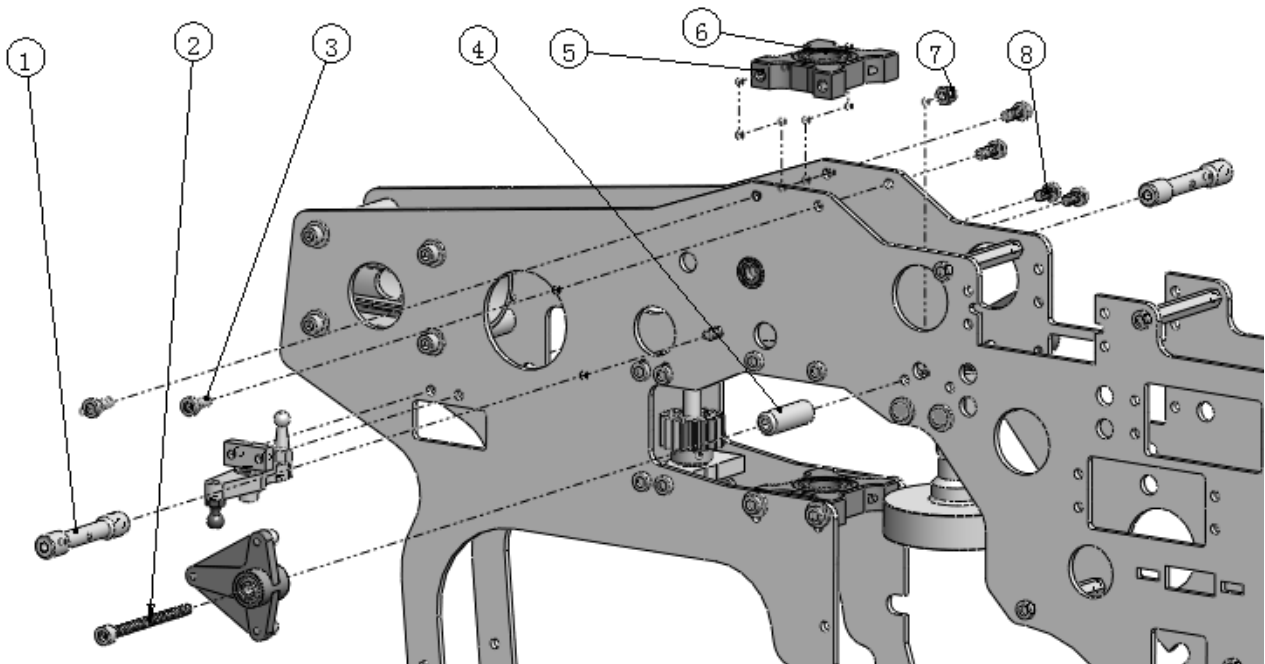


Lock Nut M3 (2pcs)

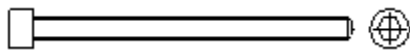


Metal Frame Spacer (4pcs)

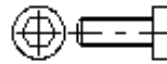
3. MAIN FRAME ASSEMBLY 3



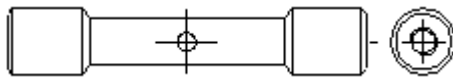
No.	Qty	Item No.	Parts Name
1	2	152-028	Metal Support Pillar
2	2	503-019	Socket Screw M3x 40
3	6	503-005	Socket Screw M3x8
4	2	154-072	Lever Spacer
5	1	154-023	Bearing Case
6	1	528-002	Bearing d10xD19xW5
7	2	511-001	Lock Nut M3
8	2	503-004	Socket Screw M3x6



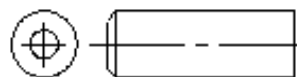
Socket Screw M3x40 (2pcs)



Socket Screw M3x8 (6pcs)



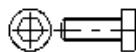
Metal Support Pillar (2pcs)



Lever Spacer (2pcs)

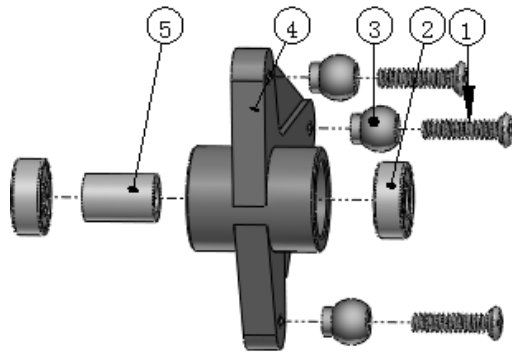


Lock Nut M3 (2pcs)

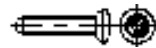


Socket Screw M3x6 (2pcs)

3-1 T-ARM LEVER ASSEMBLY



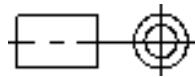
No.	Qty	Item No.	Parts Name
1	6	509-008	Link Ball Screw M2x8
2	4	521-003	Bearing d3xD8xW3
3	6	122-058	Linkage Ball
4	2	254-015	Flybar Control Lever
5	2	123-110	Collar d3xD5xW7.5



Link Ball Screw M2x8 (6pcs)



Bearing d3xD8xW3



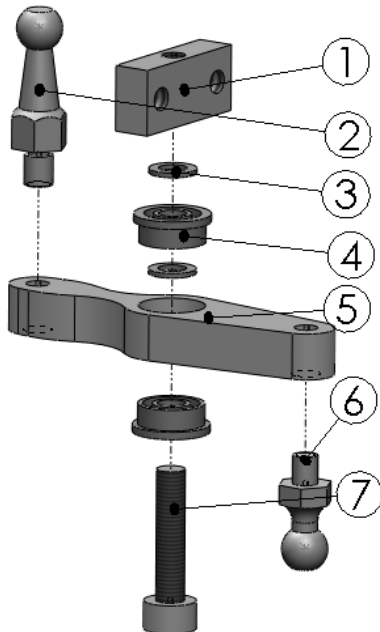
Collar d3xD5xW7.5



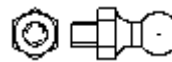
Linkage Ball (6pcs)

NOTE: The parts of both sides are distributed equally!

3-2 TAIL BELL CRANK INSTALLATION



No.	Qty	Item No.	Parts Name
1	1	154-060	Mounting Bracket
2	1	150-018	Stainless Steel Linkage Ball
3	2	550-004	Bearing d3xD7xW3(F)
4	2	513-005	Flat Washer Φ 3x5x0.5
5	1	254-022	Bell Crank
6	1	122-108	Stainless Steel Linkage Ball
7	1	503-008	Socket Screw M3x14



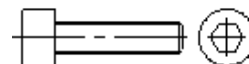
Stainless Steel Linkage Ball (1pcs)



Bearing d3xD7xW3 (F) (1pcs)



Flat Washer Φ 3x5x0.5 (1pcs)

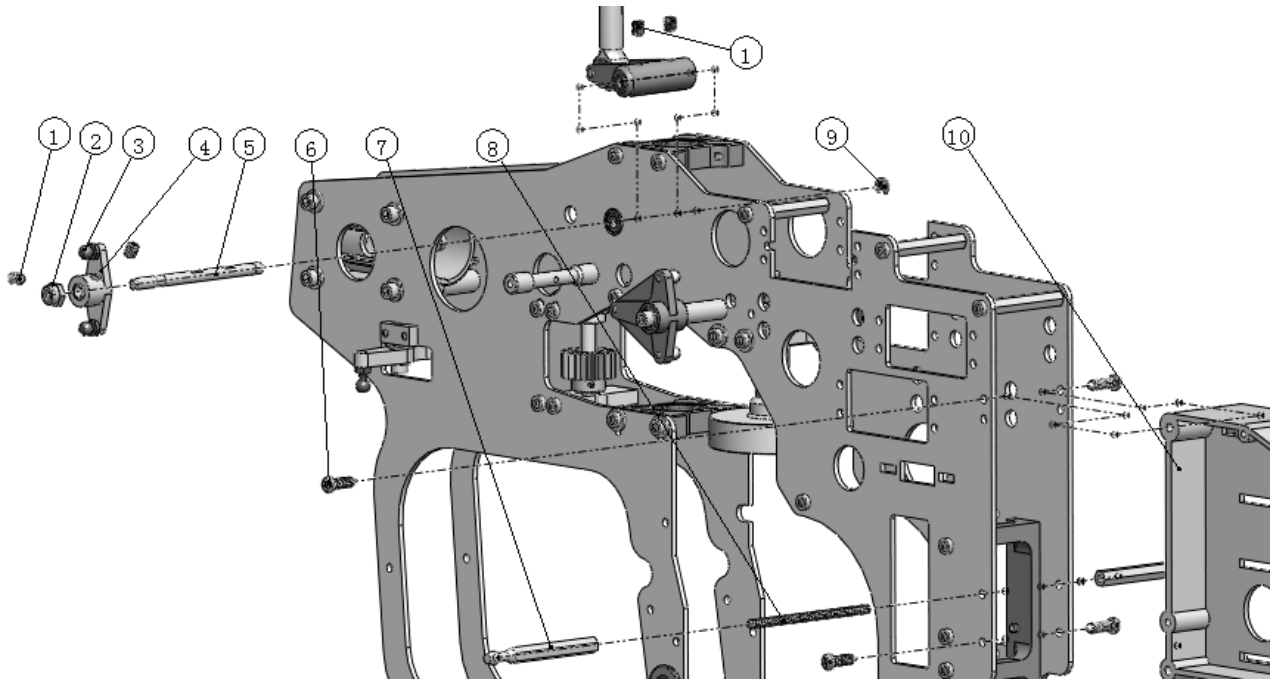


Socket Screw M3x14 (1pcs)

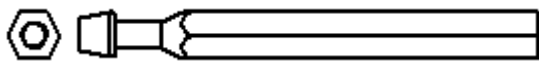


Stainless Steel Linkage Ball (1pcs)

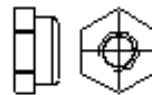
4. MAIN FRAME ASSEMBLY 4



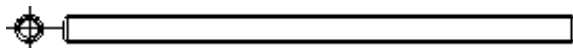
No.	Qty	Item No.	Parts Name
1	4	507-025	Set Screw M4x5
2	1	511-002	Lock Nut M4
3	2	122-056	Stainless Steel Linkage Ball
4	1	154-061	Elevator Arm(B)
5	1	154-067	Control Lever Shaft
6	4	511-010	Self tapping Screw M3.5x12
7	2	154-073	Body Catch
8	1	130-014	Screwed Bolt M3x56
9	1	515-010	Retaining RingΦ6
10	1	254-026	Frame



Body Catch (2pcs)



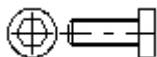
Lock Nut M4 (1pcs)



Screwed Bolt M3x56 (1pcs)



Set Screw M4x5 (4pcs)

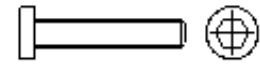
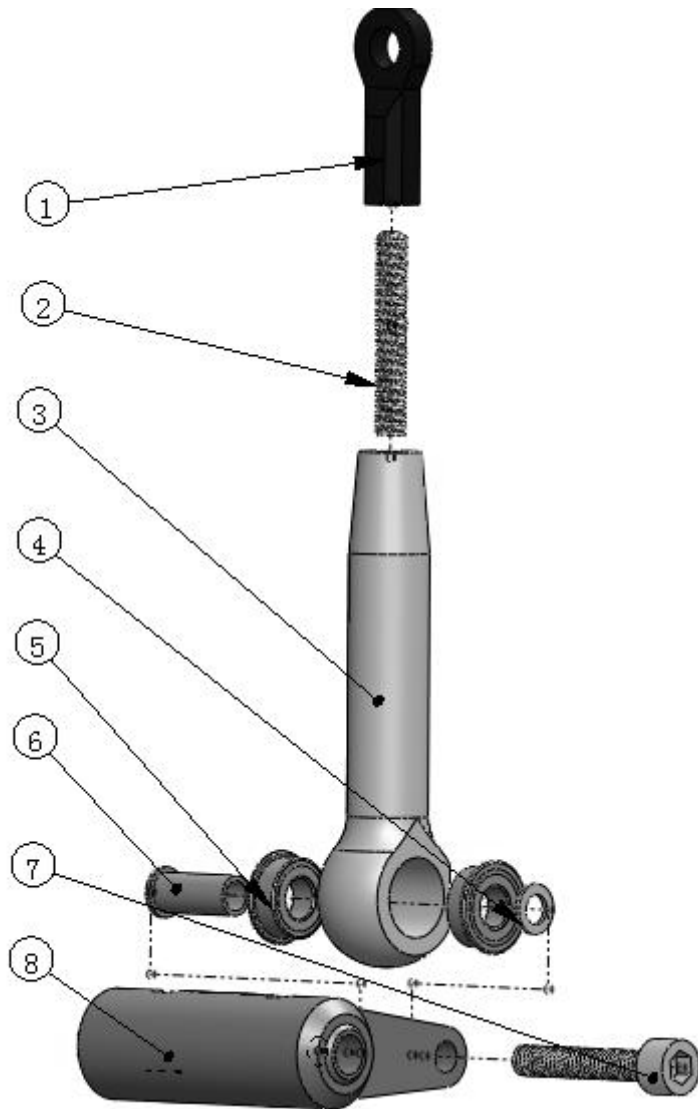


Socket Screw M3x8 (8pcs)

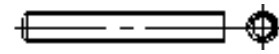


Self tapping Screw M3.5x12 (4pcs)

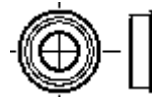
4-1 ELEVATOR ARM ASSEMBLY



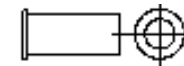
Socket Screw M3x18 (1pcs)



Socket Screw M3x20 (1pcs)



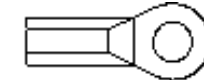
Bearing d4xD8xW3 (F) (2pcs)



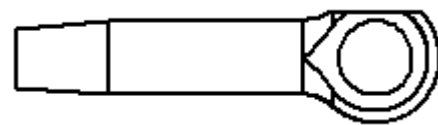
Collar d3xD4xW9.2x10.5 (1pcs)



Flat Washer Φ 3x5x0.5



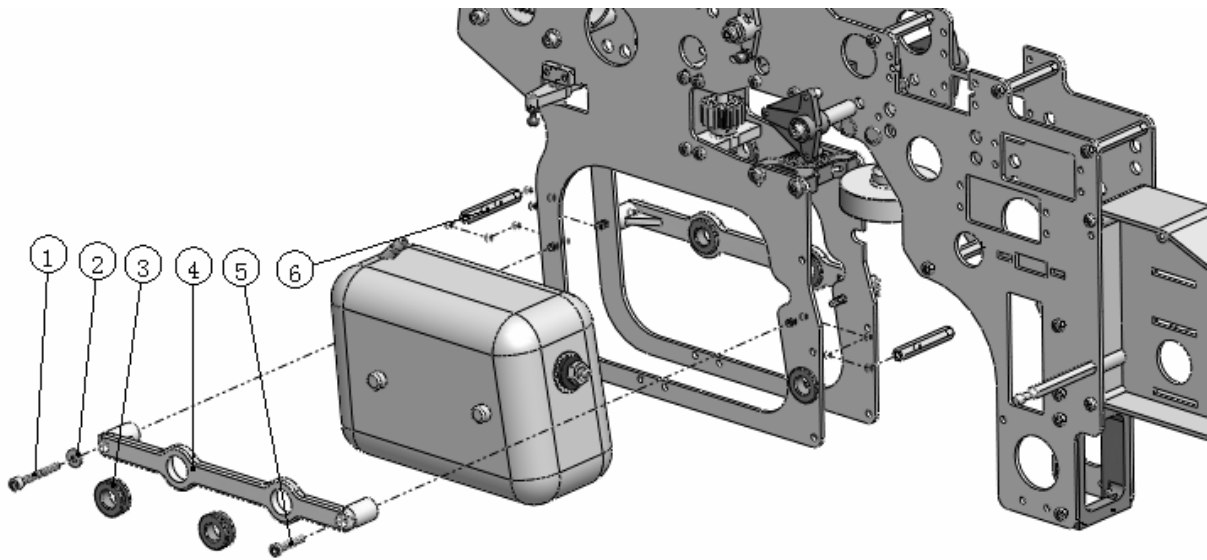
Ball Link (1pcs)



Control Lever (1pcs)

No.	Qty	Item No.	Parts Name
1	1	282-006	Ball Link
2	1	507-018	Socket Screw M3x20
3	1	130-011	Control Lever
4	1	513-005	Flat Washer Φ 3x5x0.5
5	2	550-005	Bearing d4xD8xW3(F)
6	1	123-011	Collar d3xD4xW9.2x10.5
7	1	503-012	Socket Screw M3x18
8	1	154-021	Elevator Lever

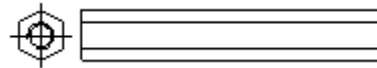
5. MAIN FRAME ASSEMBLY 5



No.	Qty	Item No.	Parts Name
1	2	503-011	Socket Screw M3x35
2	2	513-011	Flat Washer Φ 3x8x1
3	4	290-059	Fuel Tank Rubber Grommet
4	2	254-006	Tank Stay
5	2	503-010	Socket Screw M3x16
6	2	154-049	Metal Frame Spacer

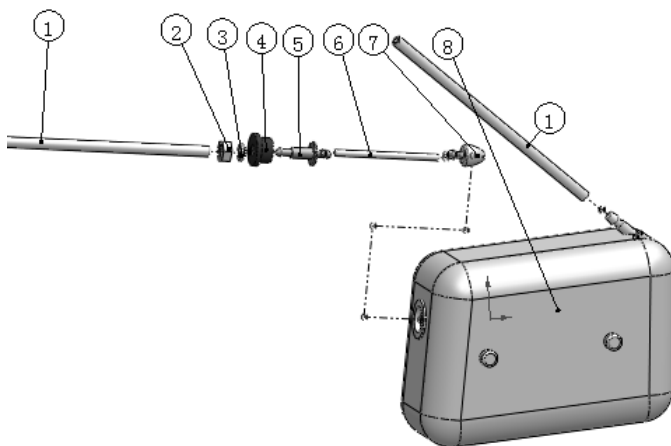


Socket Screw M3x35 (2pcs)



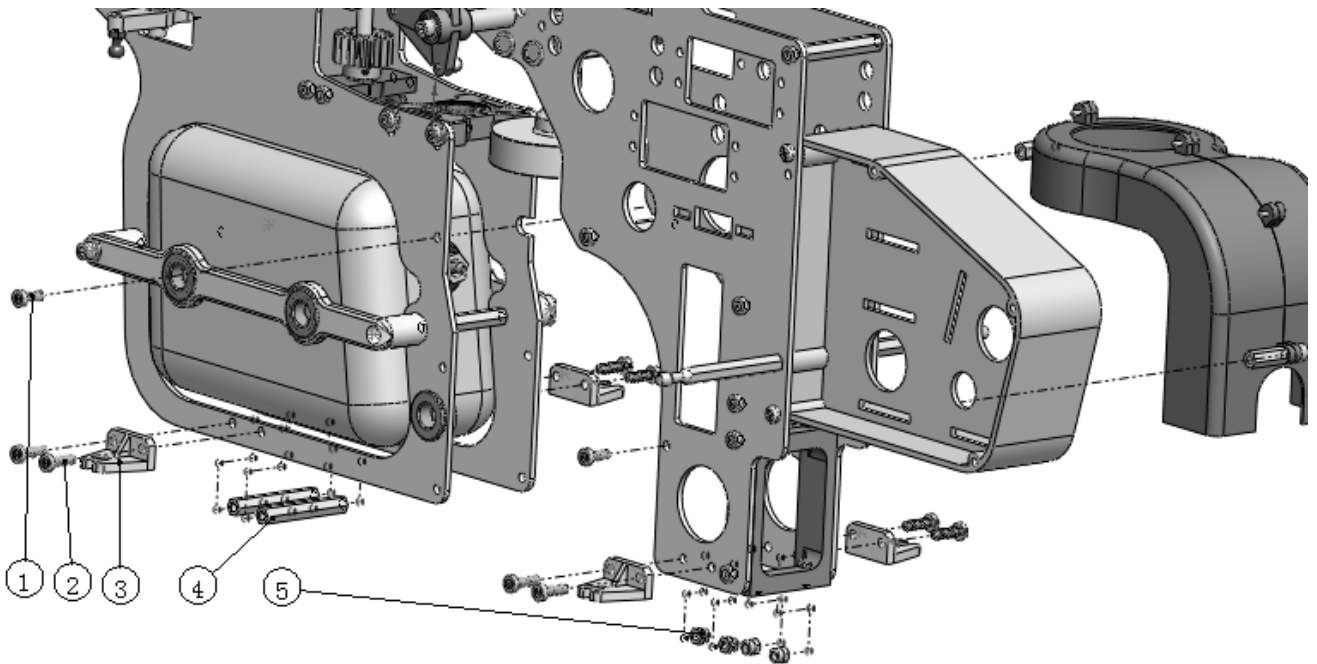
Metal Frame Spacer (2pcs)

5-1 FUEL TANK ASSEMBLY3

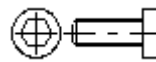


No.	Qty	Item No.	Parts Name
1	2	254-018	Fuel Tube
2	1	511-008	Nut M5
3	1	513-033	Flat Washer Φ 5x8x1
4	1	250-078	Fuel Tank Grommet
5	1	152-033	Fuel Tank Nipple
6	1	250-081	Fuel Tube
7	1	129-097	Clunk
8	1	290-032	Fuel Tank

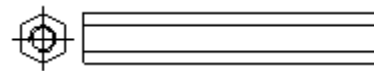
6. MAIN FRAME ASSEMBLY 6



No.	Qty	Item No.	Parts Name
1	2	503-005	Socket Screw M3x8
2	8	503-006	Socket Screw M3x10
3	4	254-011	Landing Struts Adapter
4	2	154-049	Metal Frame Spacer
5	4	511-001	Lock Nut M3



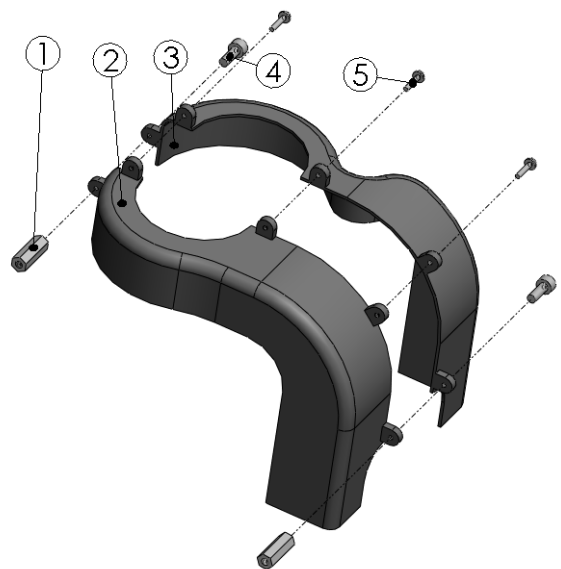
Socket Screw M3x8 (2PCS)



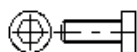
Metal Frame Spacer

6-1 FAN SHROUD SET ASSEMBLY

No.	Qty	Item No.	Parts Name
1	2	154-068	Support Pole
2	1	254-002	Fan Shroud Set (L)
3	1	254-001	Fan Shroud Set (R)
4	2	503-004	Socket Screw M3x6
5	3	510-017	Self tapping Screw M2.5x8

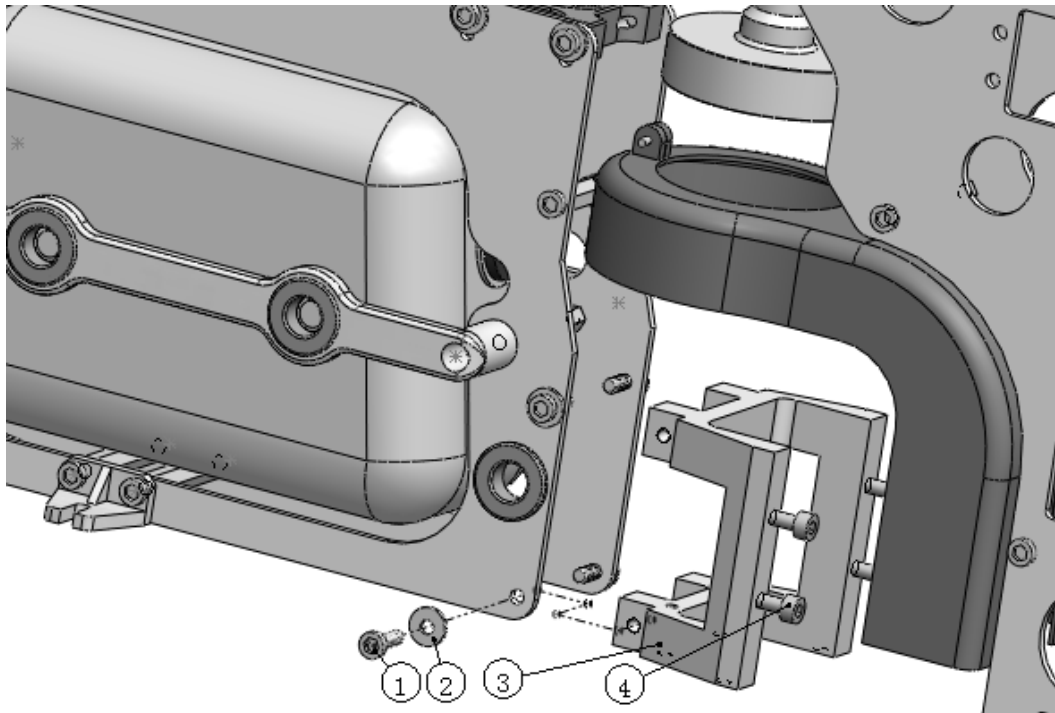


Self tapping Screw M2.5x8 (3pcs)

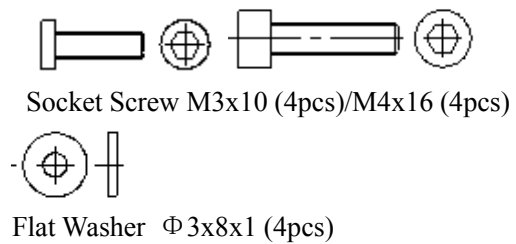


Socket Screw M3x6 (2pcs)

7. MAIN FRAME ASSEMBLY 7



No.	Qty	Item No.	Parts Name
1	4	503-006	Socket Screw M3x10
2	4	513-011	Flat Washer Φ 3x8x1
3	1	154-071	Engine Mount
4	4	503-010	Socket Screw M3x16

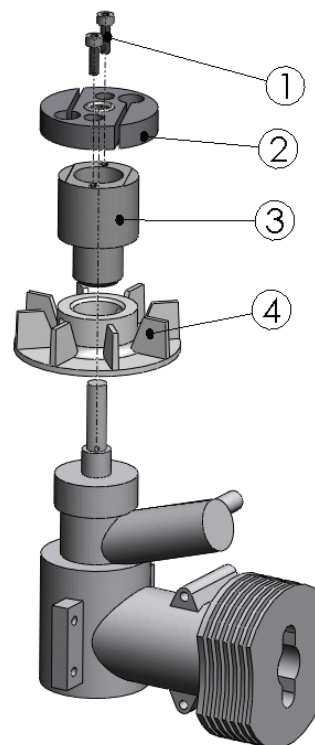


8. COOLING FAN AND ENGINE ASSEMBLY

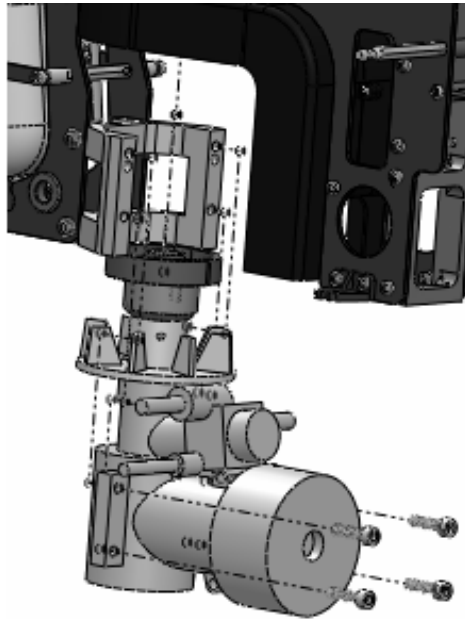
No.	Qty	Item No.	Parts Name
1	2	503-006	Socket Screw M3x10
2	1	TZ0009-50	Cooling Fan
3	1	122-010	Cooling Fan Assy Mount
4	1	250-091	Cooling Fan Assy



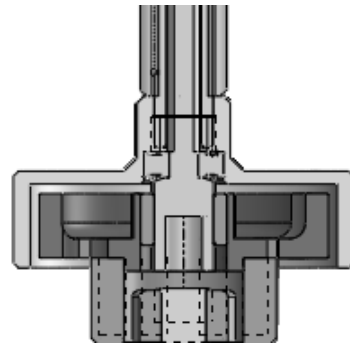
Socket Screw M3x10 (2pcs)



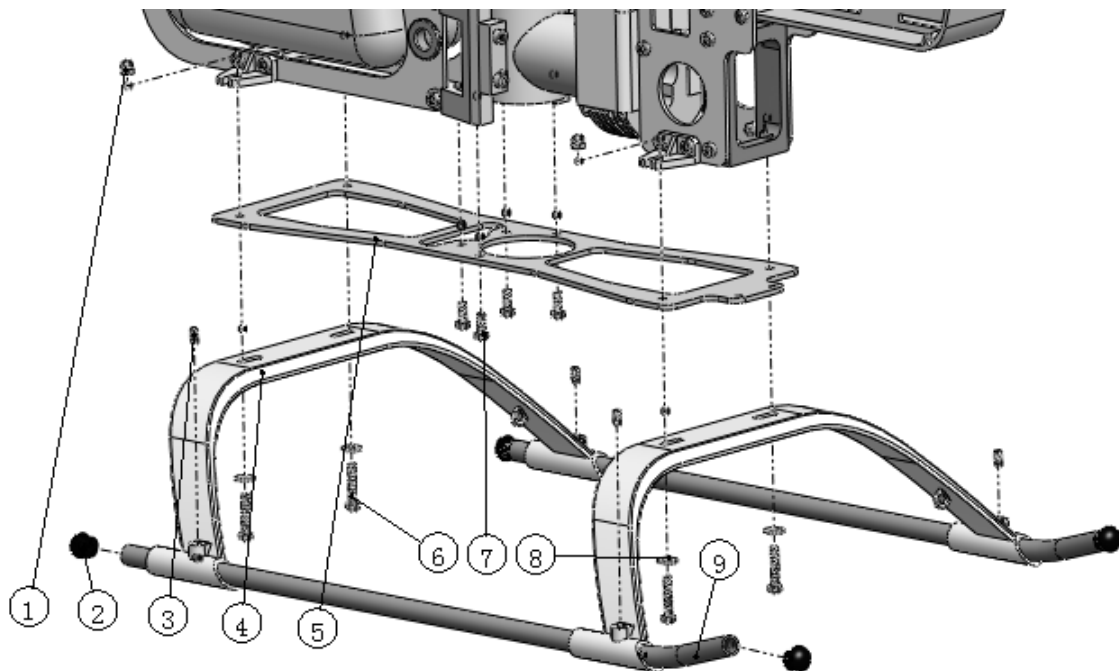
8-1 ENGINE ASSEMBLY



Adjust the position of engine so the bottom of the clutch assembly is flush with the bottom of the clutch bell. Also check to ensure that the clutch and clutch bell are parallel.

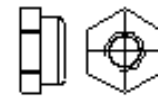
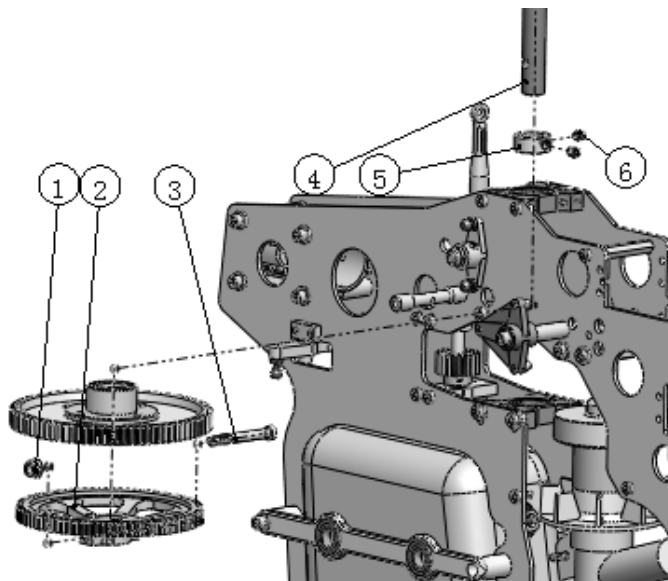


9. LANDING STRUT ASSEMBLY



No.	Qty	Item No.	Parts Name	No.	Qty	Item No.	Parts Name
1	4	511-001	Lock Nut M3	6	4	503-015	Socket Screw M3x20
2	4	290-035	Skid Cap	7	4	503-005	Socket Screw M3x8
3	4	507-026	Socket Screw M4x6	8	4	513-011	Flat Washer Φ 3x8x1
4	2	285-005	Skid Brace	9	2	122-031	Skid Lever
5	1	154-047	Base Plate				

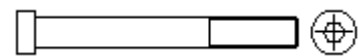
10. MAIN GEAR AND MAIN FRAME ASSEMBLY



Lock Nut M4 (1pcs)



Set Screw M4x4

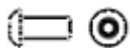


Socket Screw M4x33 (1pcs)

No.	Qty	Item No.	Parts Name
1	1	511-002	Lock Nut M4
2	1	254-025	Spur Gear (79T)
3	1	504-023	Socket Screw M4x33
4	1	451-019	Main Shaft
5	1	122-018	Main Shaft Lock Ring
6	2	507-024	Set Screw M4x4

10-1 DOUBLE MAIN DRIVE GEAR ASSEMBLY

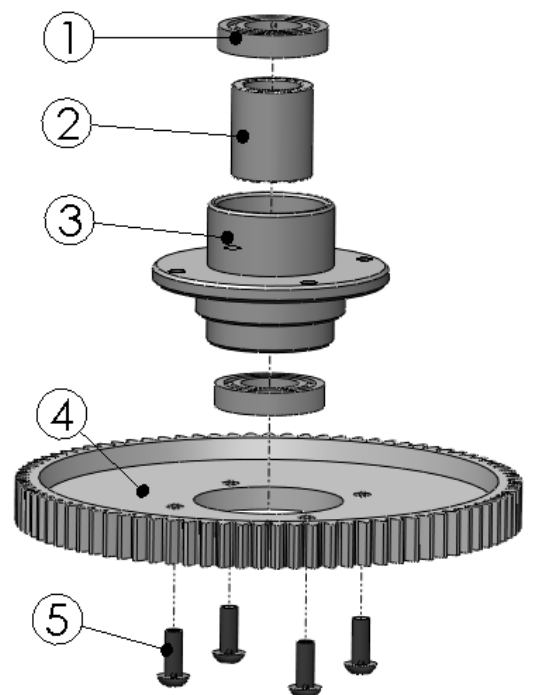
No.	Qty	Item No.	Parts Name
1	2	528-007	Bearing d10Xd19xW4
2	1	560-008	One Way Bearing d10xD14x8
3	1	154-051	One Way Clutch Housing Set
4	1	250-036	Main Spur Gear (85T)
5	4	506-005	Set Screw M3x8



Set Screw M3x8 (4pcs)

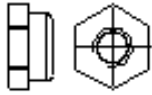


One Way Bearing d10xD14x16 (1pcs)

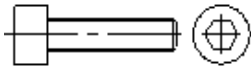


11. MAIN SHAFT ASSY ASSEMBLY

No.	Qty	Item No.	Parts Name
1	1	511-002	Lock Nut M4
2	1	504-020	Socket Screw M4x24
3	2	503-009	Socket Screw M3x14



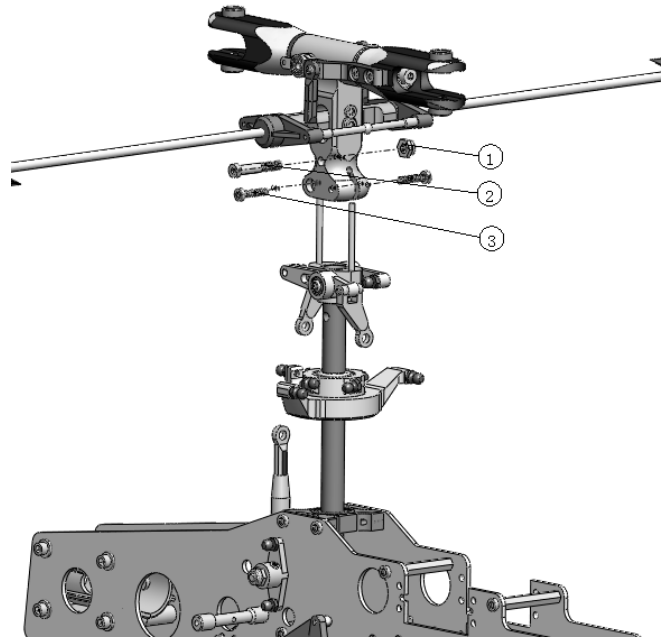
Lock Nut M4 (1pcs)



Socket Screw M3x14 (2pcs)

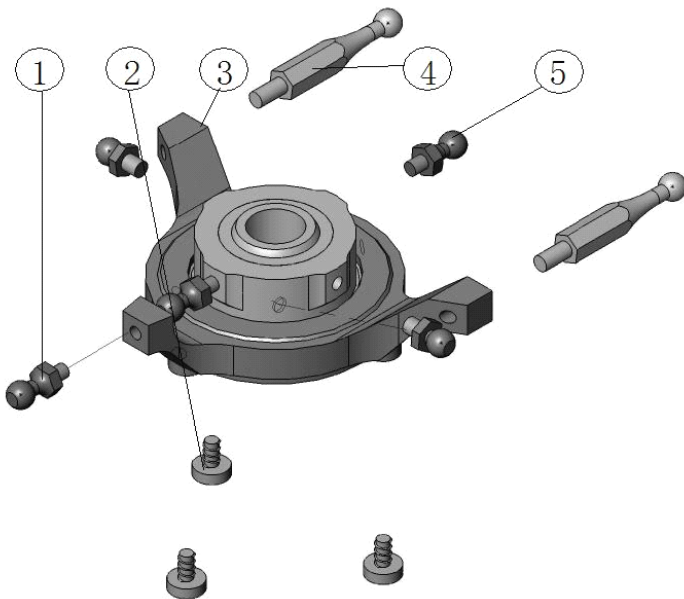


Socket Screw M4x24 (1pcs)



NOTE: Locking 503-009 first, then lock 504-020

11-1 SWASH PLATE ASSEMBLY



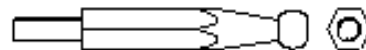
No.	Qty	Item No.	Parts Name
1	1	122-108	Stainless Steel Linkage Ball
2	3	510-031	Self-Tapping Screw M3x5
3	1	TZ1616	Swash Plate Assy
4	2	154-035	Stainless Steel Linkage Ball (for 140ccpm)
5	4	122-056	Stainless Steel Linkage Ball



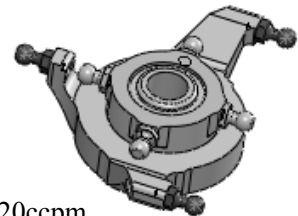
Linkage Ball (4pcs)



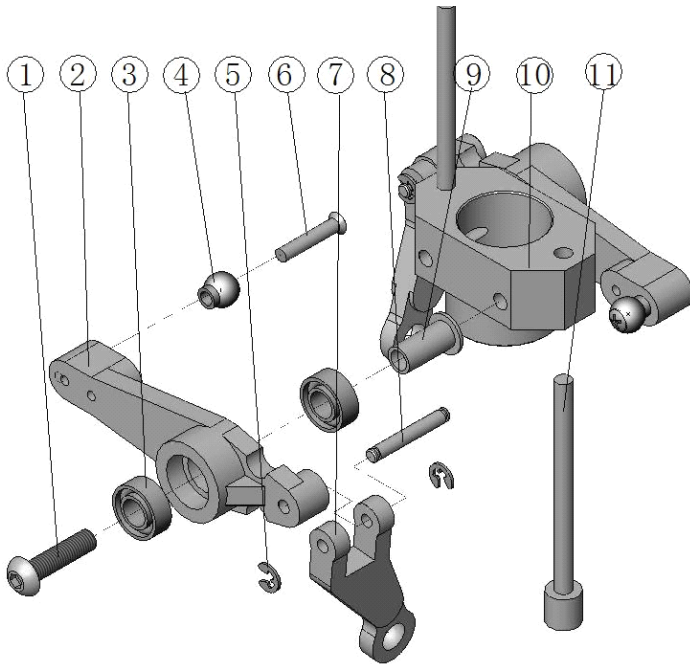
120ccpm
Stainless Steel Linkage Ball 122-108 (1pcs)



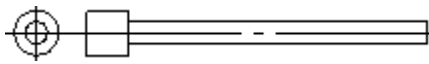
Linkage Ball (For 140°) (2pcs)



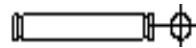
11-2 WASHOUT BASE ASSEMBLY



No.	Qty	Item No.	Parts Name
1	2	506-009	Socket Screw M3x12
2	2	254-007	Flyer Control Lever
3	4	522-002	Bearing d4xD8xW3
4	2	122-058	Linkage Ball
5	4	515-009	Retaining Ring Φ2
6	2	509-010	Link Ball Screw M2x10
7	2	250-013	Washout Linkage
8	2	512-042	Pin Φ2xL12
9	2	123-001	Collar d3xD4xW8.5x10.5
10	1	154-052	Washout Base
11	2	154-066	Locate Staff



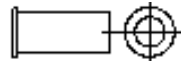
Locate Staff (2pcs)



Pin Φ2×L12 (2pcs)



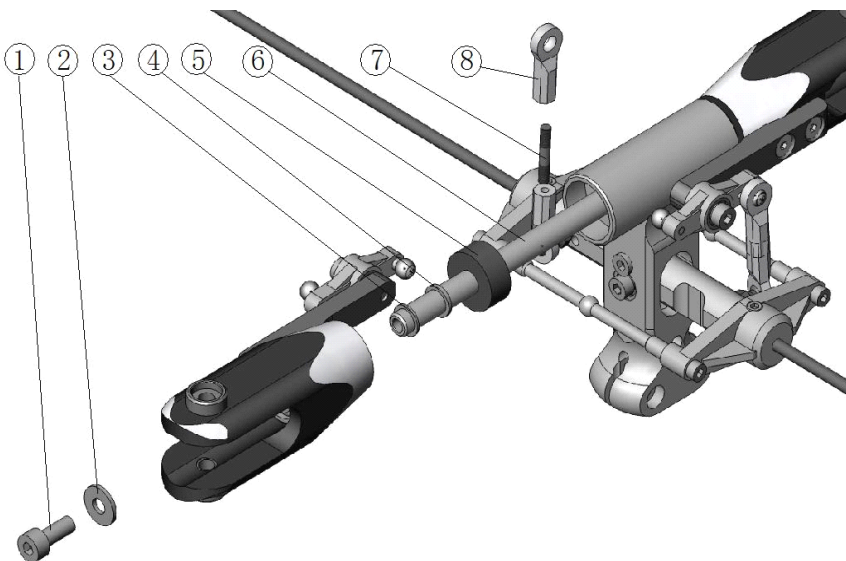
Socket Screw M3×12 (2pcs)



Collar d3×D4×W8.5×10.5 (2pcs)

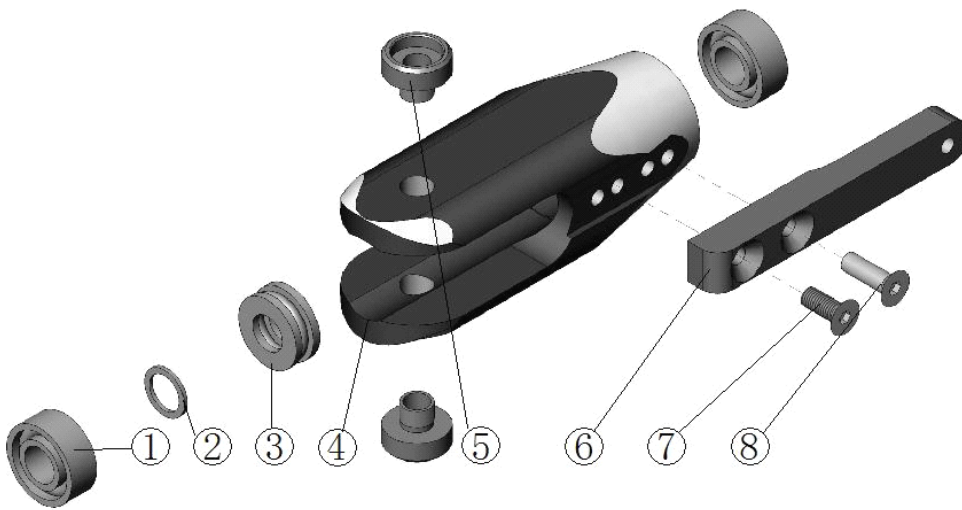
11-3 ROTOR HEAD, MIXING ARM AND MAIN BLADE

HOLDER ASSEMBLY



No.	Qty	Item No.	Parts Name
1	2	504-007	Socket Screw M4x10
2	2	513-013	Flat Washer Φ4x10x1
3	2	513-025	Flat Washer Φ6x8x0.6
4	2	513-026	Flat Washer Φ6x8x1
5	2	250-711	Bushing d6xD15xW7
6	1	122-051	Blade Spindle Shaft
7	2	610-101	Linkage Rod (L=15)
8	4	282-006	Ball Link

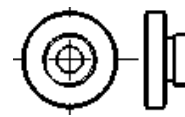
11-4 MAIN BLADE HOLDER ASSEMBLY



Bearing
d6xD13xW5 (4pcs)



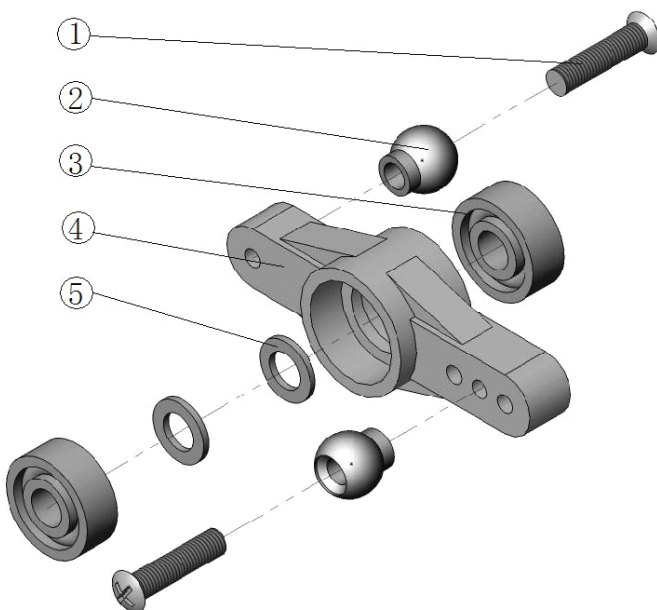
Thrust Bearing
d6xD12xW4.5 (2pcs)



Main Rotor Grip
Screw (4pcs)

No.	Qty	Item No.	Parts Name
1	4	524-005	Bearing d6xD13xW5
2	2	513-025	Flat Washer Φ 6x8x0.6
3	2	580-001	Thrust Bearing d6xD12xW4.5
4	2	154-062	Main Rotor Grip Metal
5	4	122-047	Main Rotor Grip Screw
6	2	154-054	Main Rotor Grip Arm Metal
7	2	519-056	Semi-Link Ball Socket Screw M3x6
8	2	519-003	Semi-Link Ball Socket Screw M3x8

11-5 MIXING ARM ASSEMBLY



No.	Qty	Item No.	Parts Name
1	4	509-008	Link Ball Screw M2x8
2	4	122-058	Linkage Ball
3	4	521-003	Bearing d3xD8xW3
4	2	254-008	Aileron Control Lever
5	4	513-005	Flat Washer Φ 3x5x0.5



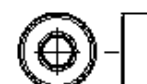
Linkage Ball (4pcs)



Flat Washer Φ 3x5x0.5 (4pcs)

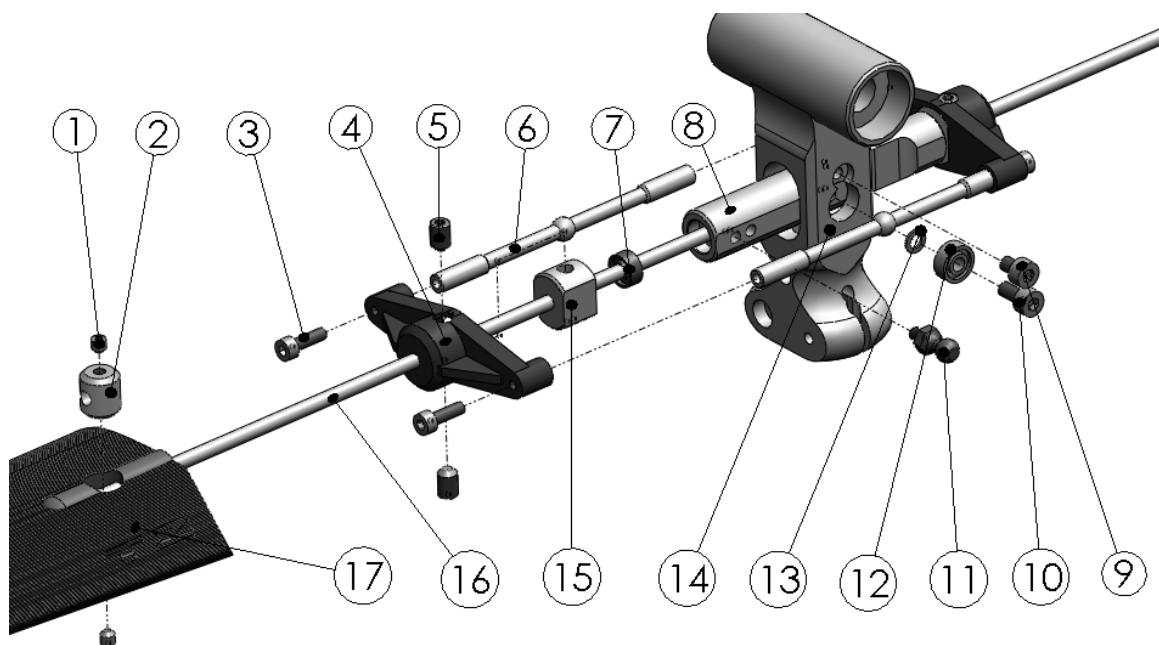


Link Ball Screw M2x8 (4pcs)

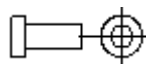


Bearing d3xD8xW3 (4pcs)

11-6 ROTOR HEAD ASSEMBLY



No.	Qty	Item No.	Parts Name
1	4	507-001	Set Screw M3x3
2	2	122-151	Locker
3	4	502-005	Socket Screw M2.5x8
4	2	254-009	Fly Ball Arm (A)
5	4	507-026	Set Screw M4x6
6	2	154-056	Fly Ball Arm
7	2	521-002	Bearing d3xD7xW3
8	1	154-055	Fly Ball Screw Hub
9	2	503-001	Socket Screw M3x4
10	2	503-003	Socket Screw M3x6
11	2	122-108	Stainless Steel Linkage Ball
12	2	521-003	Bearing d3xD8xW3
13	2	513-005	Flat Washer $\Phi 3 \times 5 \times 0.5$
14	1	154-050	Main Rotor Pedestal
15	2	154-064	Fly Ball Arm (B)
16	1	122-008	Fly Ball Rod
17	2	282-012	Fly Ball Paddle



Socket Screw M2.5x8 (4pcs)



Socket Screw M3x6 (2pcs)



Set Screw M4x6 (4pcs)

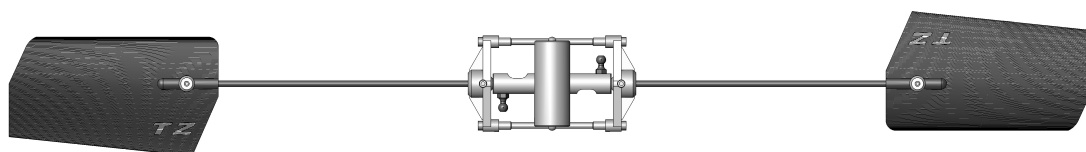


Flat Washer $\Phi 3 \times 5 \times 0.5$ (2pcs)



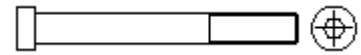
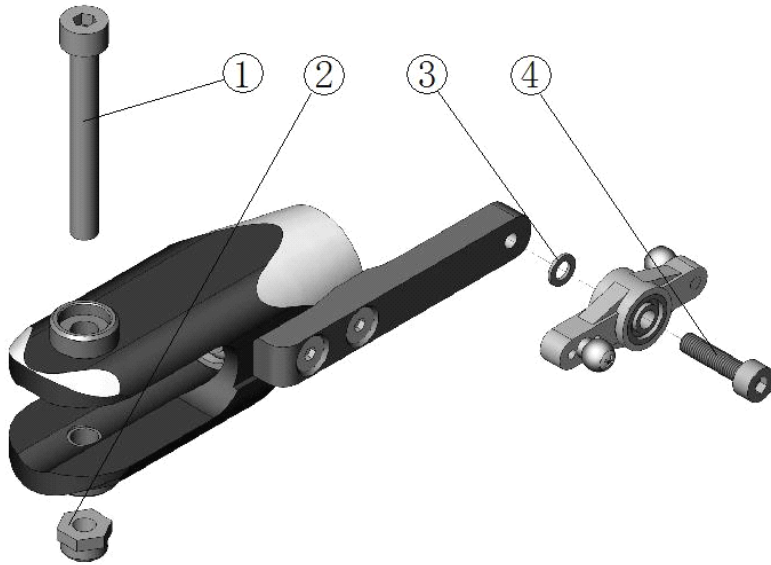
Bearing d3xD8xW3 (2pcs)

$A=B \approx 126.5\text{mm}$



The three parts should be parallel

11-7 MIXING ARM AND MAIN BLADE HOLDER ASSEMBLY



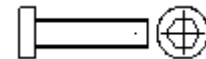
Socket Screw M4x33 (2PCS)



Lock Nut M4 (2PCS)



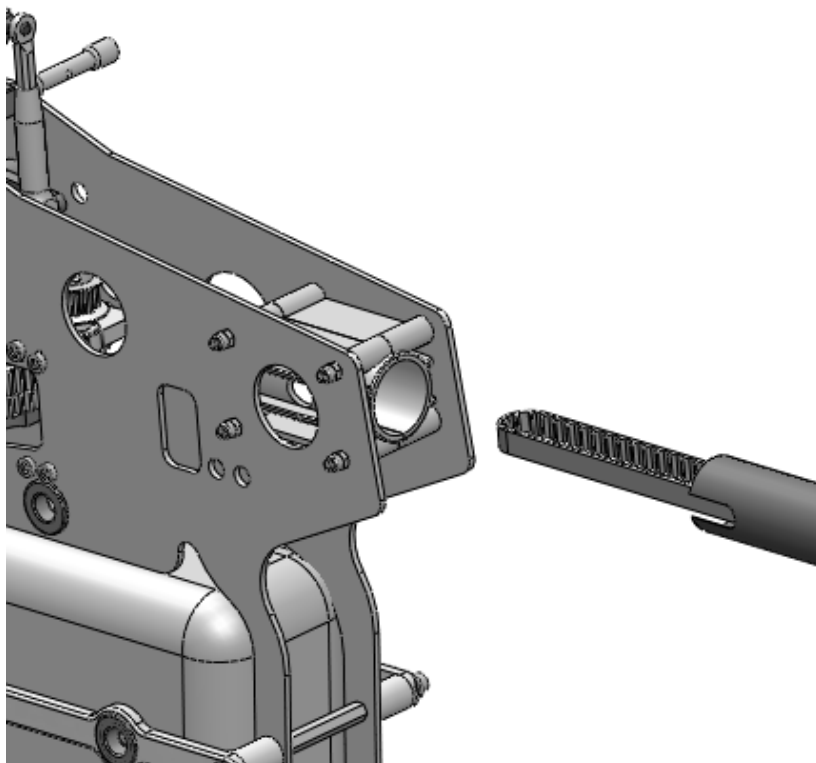
Flat Washer $\Phi 3 \times 5 \times 0.5$ (2PCS)



Socket Screw M3x12 (2PCS)

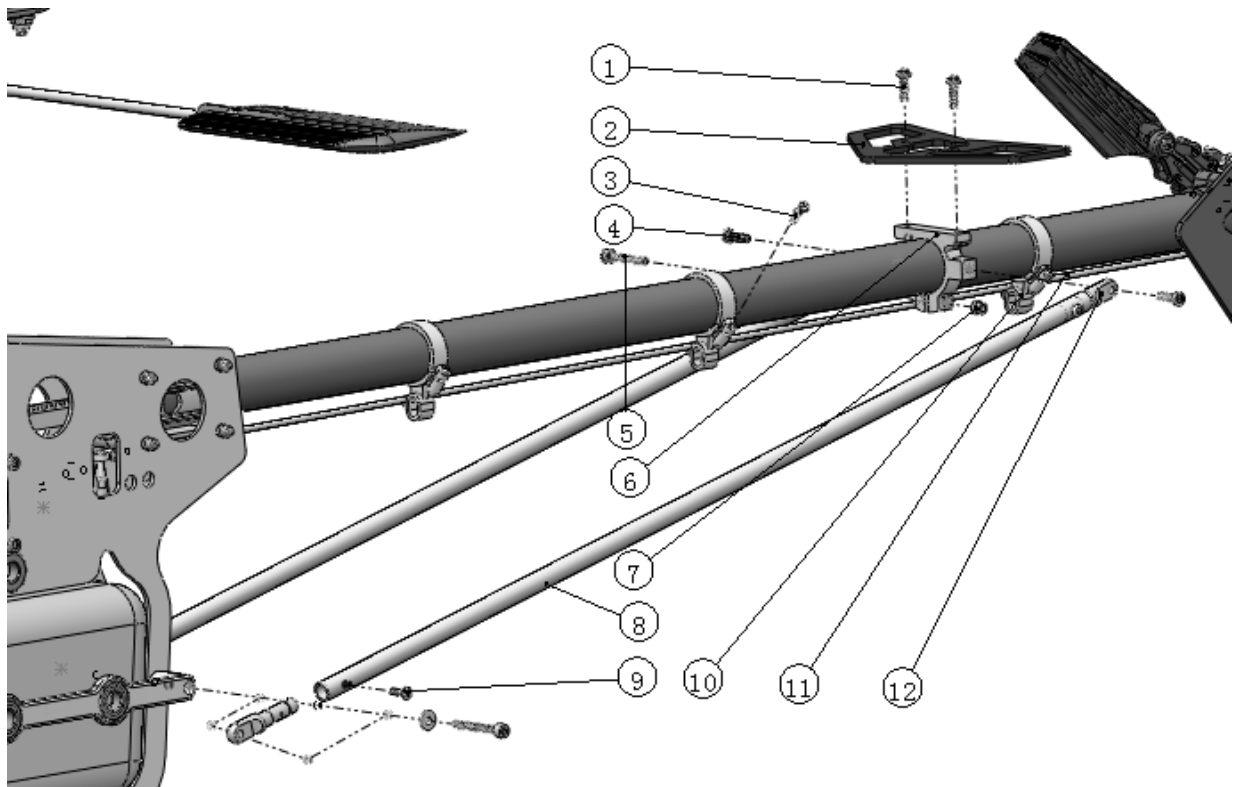
No.	Qty	Item No.	Parts Name
1	2	504-023	Socket Screw M4x33
2	2	511-002	Lock Nut M4
3	2	513-005	Flat Washer $\Phi 3 \times 5 \times 0.5$
4	2	503-007	Socket Screw M3x12

12. TAIL DRIVING ASSEMBLY



NOTE: Tail driving belt clockwise 90°

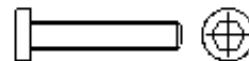
13. TAIL BOOM BRACE INSTALLATION



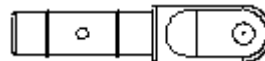
No.	Qty	Item No.	Parts Name
1	2	510-036	Self tapping Screw M3x10
2	1	254-016	Stabilizer Fin
3	4	510-007	Self Tapping Screw M2x10
4	4	510-036	Self Tapping Screw M3x10
5	1	503-015	Socket Screw M3x20
6	1	25-021	Level Tail Fin Mount
7	1	511-001	Lock Nut M3
8	2	122-043	Tail Support Rod
9	4	509-008	Link Ball Screw M2x8
10	3	250-063	Rod Guide
11	4	509-008	Linkage Rod (L=640)
12	4	250-064	Tail Support Rod End



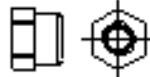
Self tapping Screw M3x10 (2pcs)



Set Screw M3x20 (1pcs)



Tail Boom Brace 250-064 (4pcs)

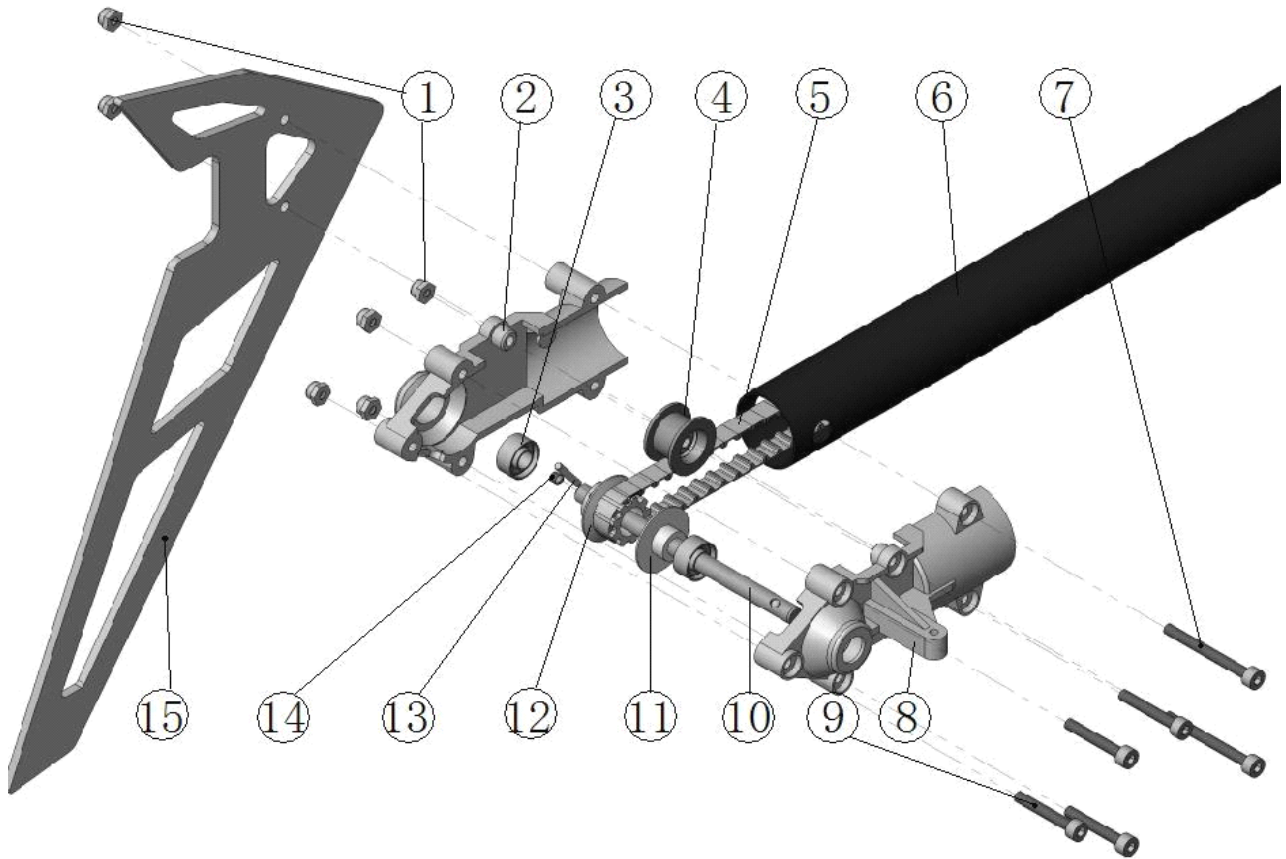


Lock Nut M3 (1pcs)



Tail Boom Brace Assembly

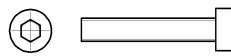
13-1 TAIL CASE ASSEMBLY



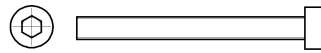
No.	Qty	Item No.	Parts Name
1	6	511-001	Lock Nut M3
2	1	250-032	Tail Unit Housing (L)
3	2	523-004	Bearing d5xD11xW5
4	1	TZ0006	Tail Pulley
5	1	250-096	Tail Belt (670x1)
6	1	122-012	Tail Boom (670x1)
7	2	503-018	Socket Screw M3x30
8	1	250-031	Tail Unit Housing (R)
9	4	503-015	Socket Screw M3x20
10	1	122-030	Tail Rotor Shaft
11	1	250-033	Tail Pulley Set
12	1	250-034	Tail Pulley Flange
13	1	512-009	Pin Φ2x12
14	1	507-001	Set Screw M3x3
15	1	254-017	Vertical Fin



Lock Nut M3 (6pcs)



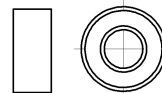
Socket Screw M3x20 (4pcs)



Socket Screw M3x30 (2pcs)

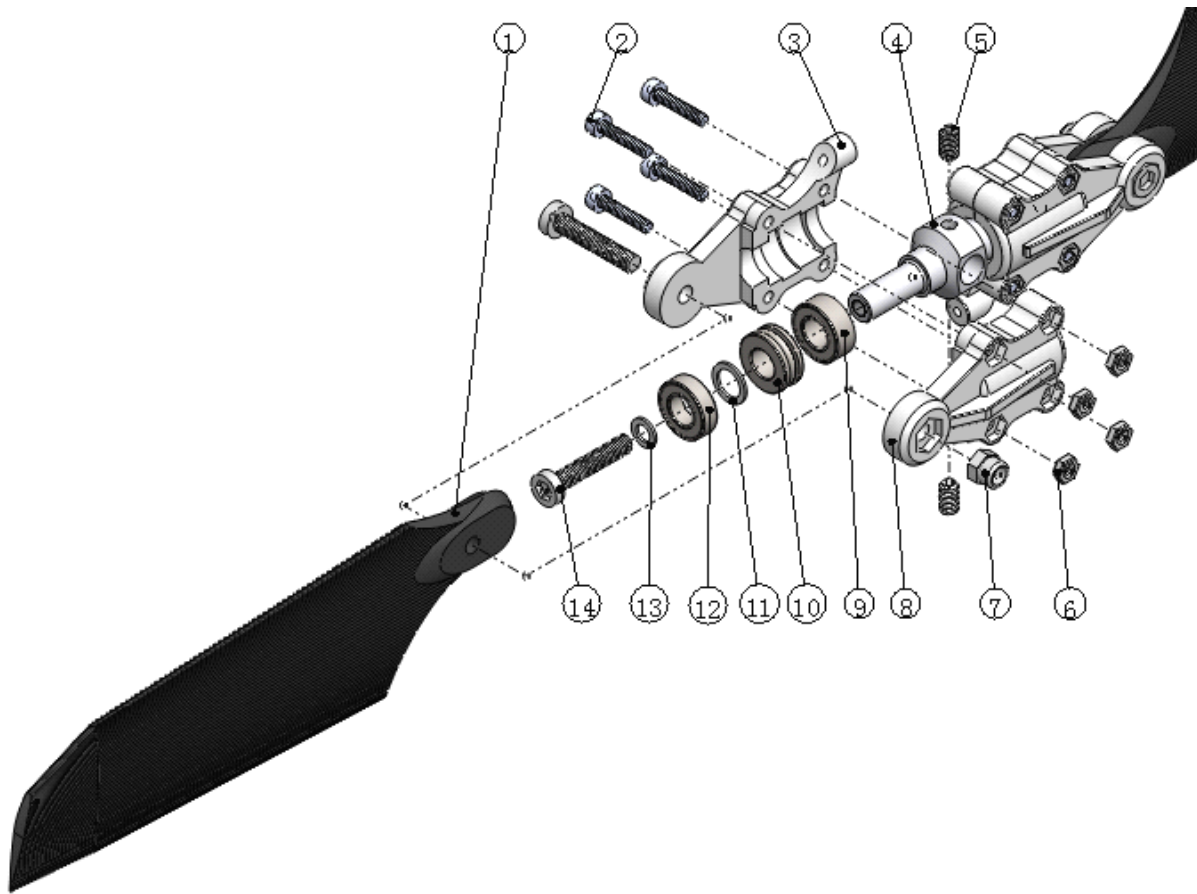


Set Screw M3x3 (1pcs)



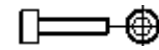
Bearing d5xD11xW5 (2pcs)

13-2 TAIL BLADE ASSEMBLY



Note: The front of the tail blades and rotor grip arms are on the same side!

No.	Qty	Item No.	Parts Name
1	2	250-099	Tail Rotor Blade
2	8	501-003	Socket Screw M2×8
3	2	290-065	Tail Pitch Grip (A)
4	1	129-147	Tail Rotor Hub
5	2	507-003	Set Screw M3×5
6	8	511-004	Nut M2
7	2	511-001	Lock Nut M3
8	2	290-066	Tail Pitch Grip (B)
9	2	523-001	Bearing d5×D10×W4
10	2	580-002	Thrust Bearing d5×D10×W4
11	2	513-034	Flat Washer Φ5×7×1
12	2	523-008	Bearing d5×D10×W3
13	2	513-005	Flat Washer Φ3×5×0.5
14	3	503-010	Socket Screw M3×16



Socket Screw M2×8 (8pcs)



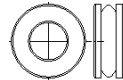
Set Screw M3×5 (2pcs)



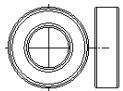
Lock Nut M3 (2pcs)



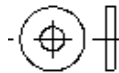
Nut M2 (8pcs)



Thrust Bearing d5×D10×W4 (2pcs)

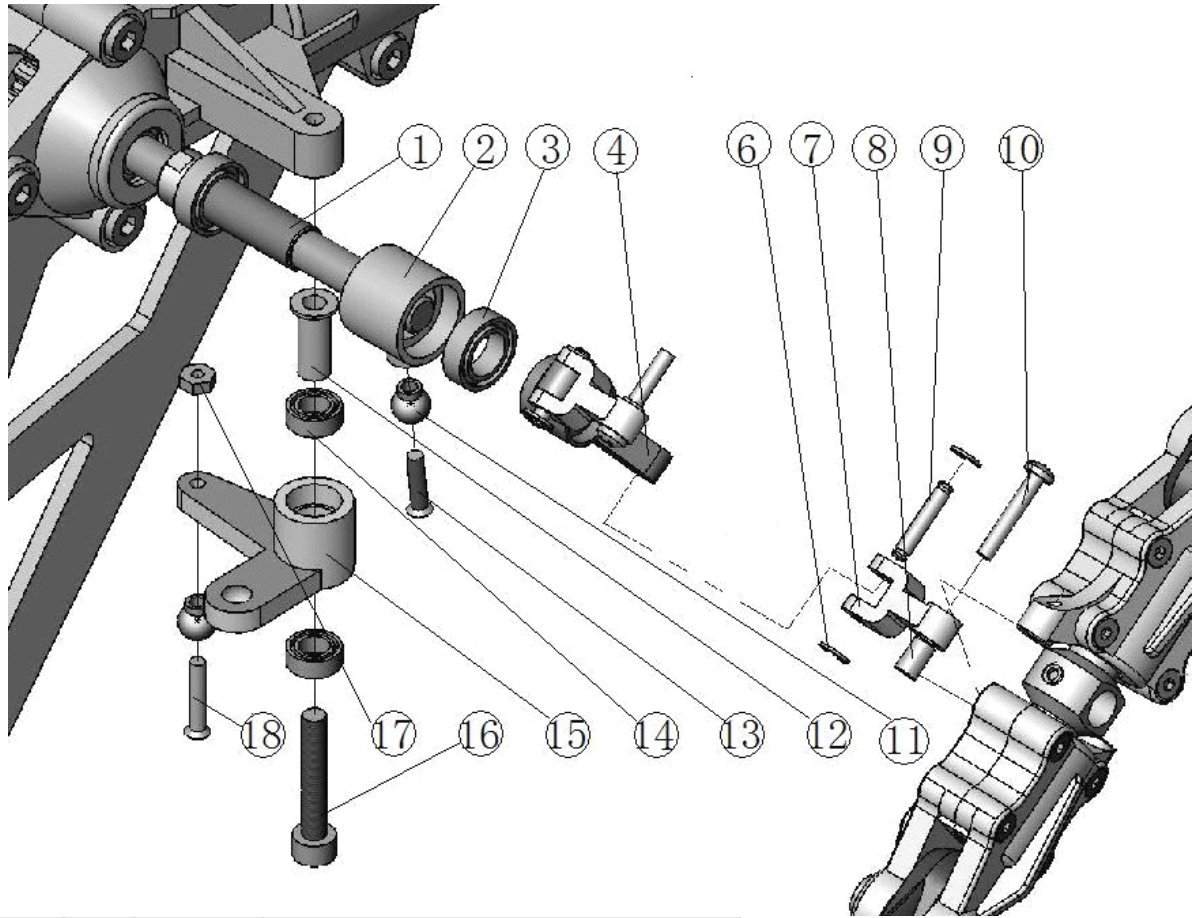


Bearing d5×D10×W4 (2pcs)

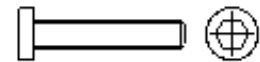


Flat Washer Φ5×7×1 (2pcs)

13-3 TAIL CASE AND TAIL BLADE ASSEMBLY



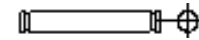
No.	Qty	Item No.	Parts Name
1	1	122-017	Tail Pitch Control Slide Bushing
2	1	250-028	Tail Pitch Control Slide
3	2	524-001	Bearing d6xD10xW3
4	1	250-026	Tail Pitch Control Fork
6	4	515-009	Retaining Ring $\Phi 2$
7	2	250-027	Tail Pitch Control Link
8	2	123-008	Collar d2xD3xW4.5
9	2	512-041	Pin $\Phi 2 \times L9$
10	2	508-008	Button Head Bolt M2x12
11	2	122-058	Linkage Ball
12	1	123-002	Collar d3xD4xW10xL0.5
13	1	509-008	Link Ball Screw M2x8
14	2	522-001	Bearing d4xD7xW2.5
15	1	250-025	Tail Pitch Control Lever
16	1	503-012	Socket Screw M3x18
17	1	511-004	Nut M2
18	1	509-010	Link Ball Screw M2x10



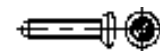
Socket Screw M3x18 (1pcs)



Linkage Ball (2pcs)



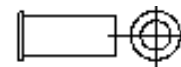
Pin $\Phi 2 \times L9$ (2pcs)



Link Ball Screw M2x8 (1pcs)

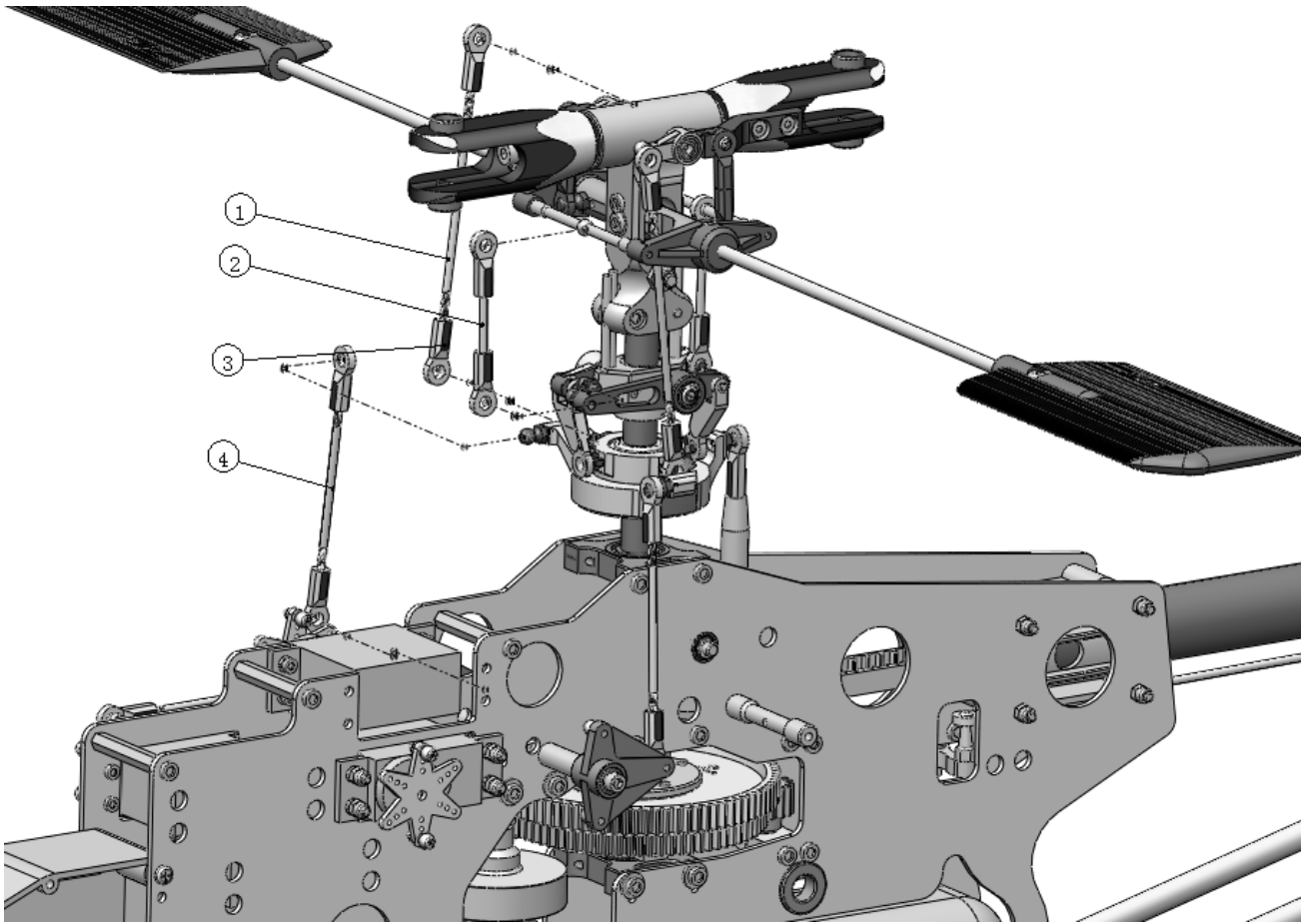


Retaining Ring $\Phi 2$ (4pcs)

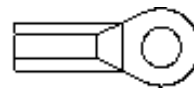


Collar d3xD4xW10xL0.5 (1pcs)

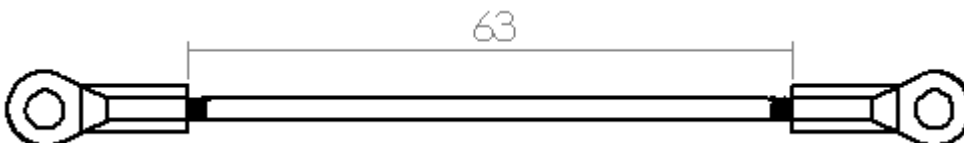
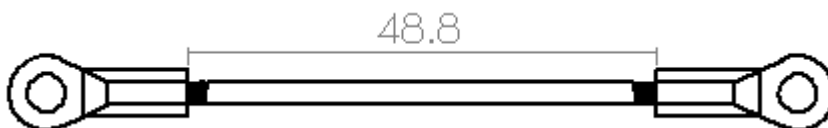
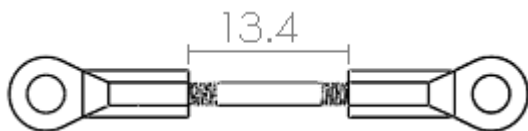
14 CONTROL ROD INSTALLATIONS 1



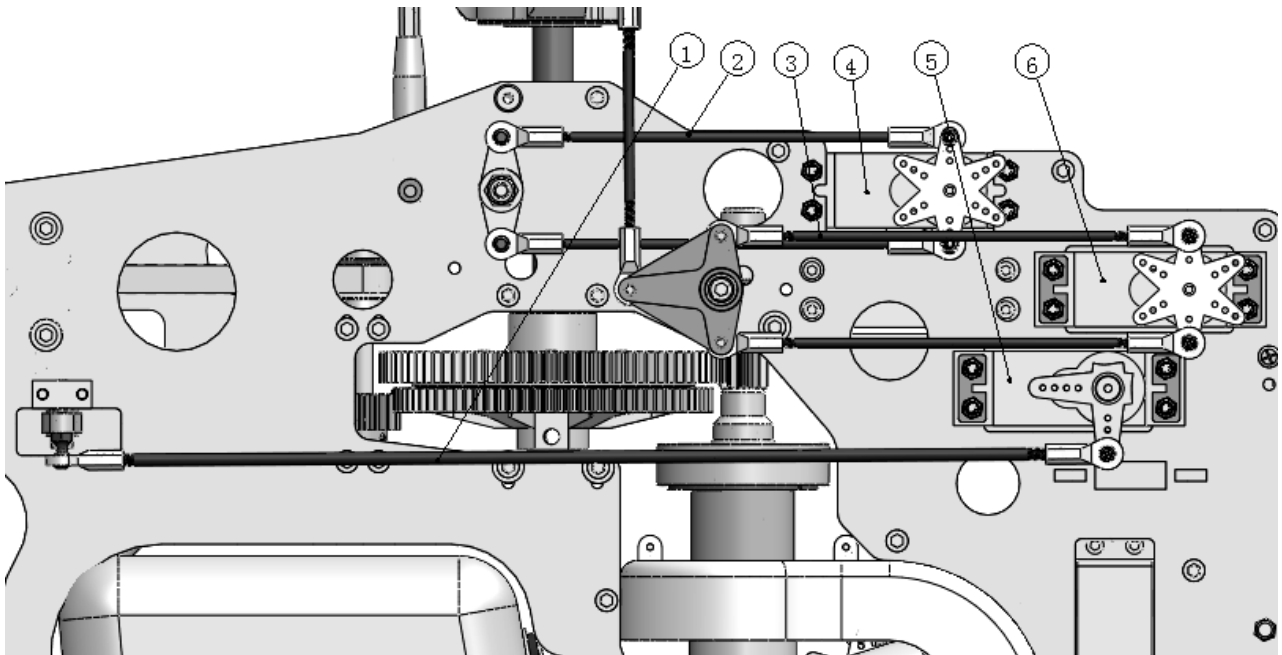
No.	Qty	Item No.	Parts Name
1	2	610-115	Linkage Rod (L=80)
2	2	610-104	Linkage Rod (L=30)
3	12	282-006	Ball Link
4	2	610-114	Linkage Rod (L=65)



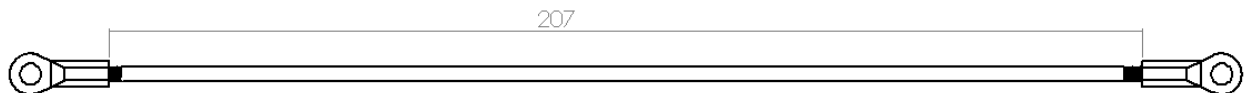
Ball Link



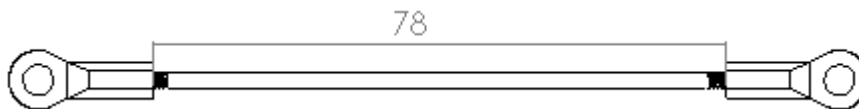
15 CONTROL ROD INSTALLATIONS 2



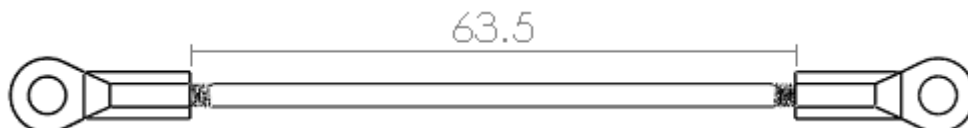
No.1 Rudder Servo Control (L=220)



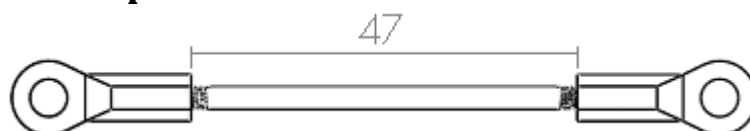
No.2 Elevator arm Control (L=95)



No.3 T-arm servo (R) Control (L=80 for 120ccpm, L=60 for 140ccpm)



For 120ccpm



For 140ccpm

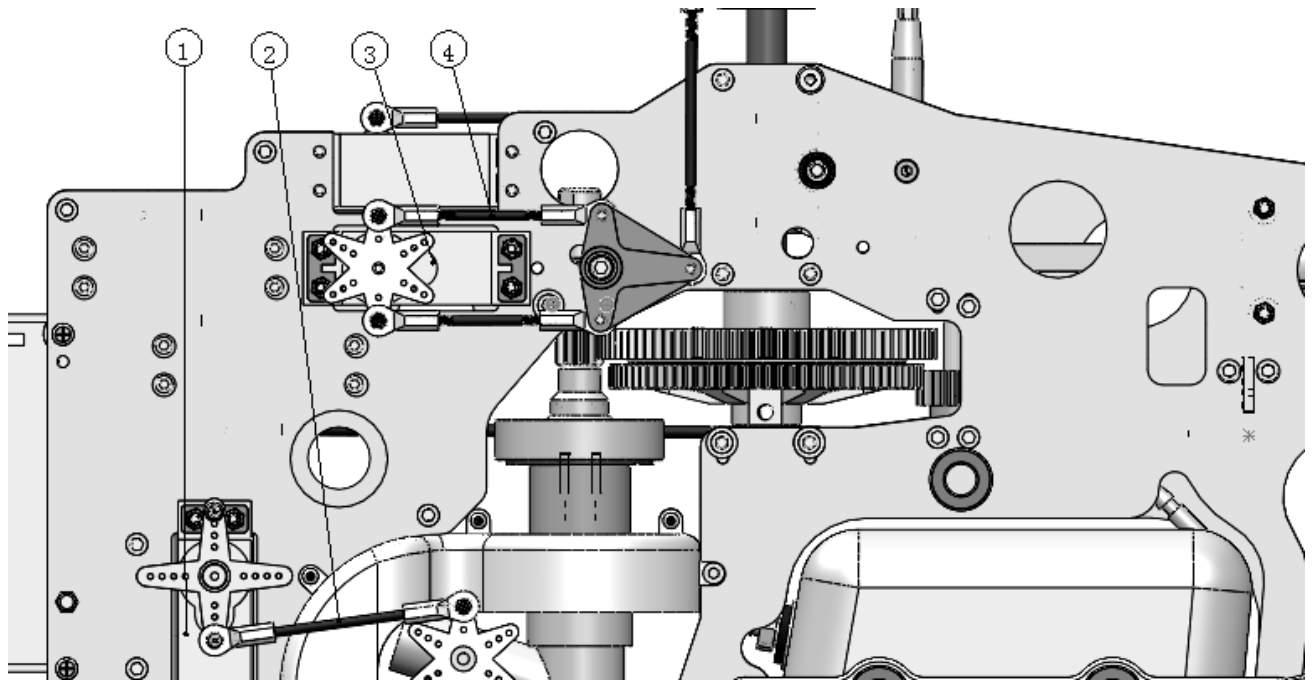
No.4 Elevator arm servo

No.5 Rudder Servo

No.6 T-arm servo (R)

NOTE: THE ELEVATOR ARM SERVO ASSEMBLY FROM INSIDE TO OUTSIDE!

16 CONTROL ROD INSTALLATIONS 3



No.1 Thro servo

No.2 Thro servo Control (L=45)

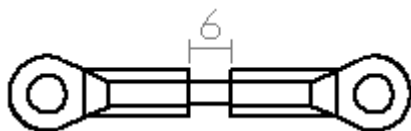


No.3 T-arm servo (L)

No.4 T-arm servo (L) Control (L=40 for 120ccpm, L=25 for 140ccpm)

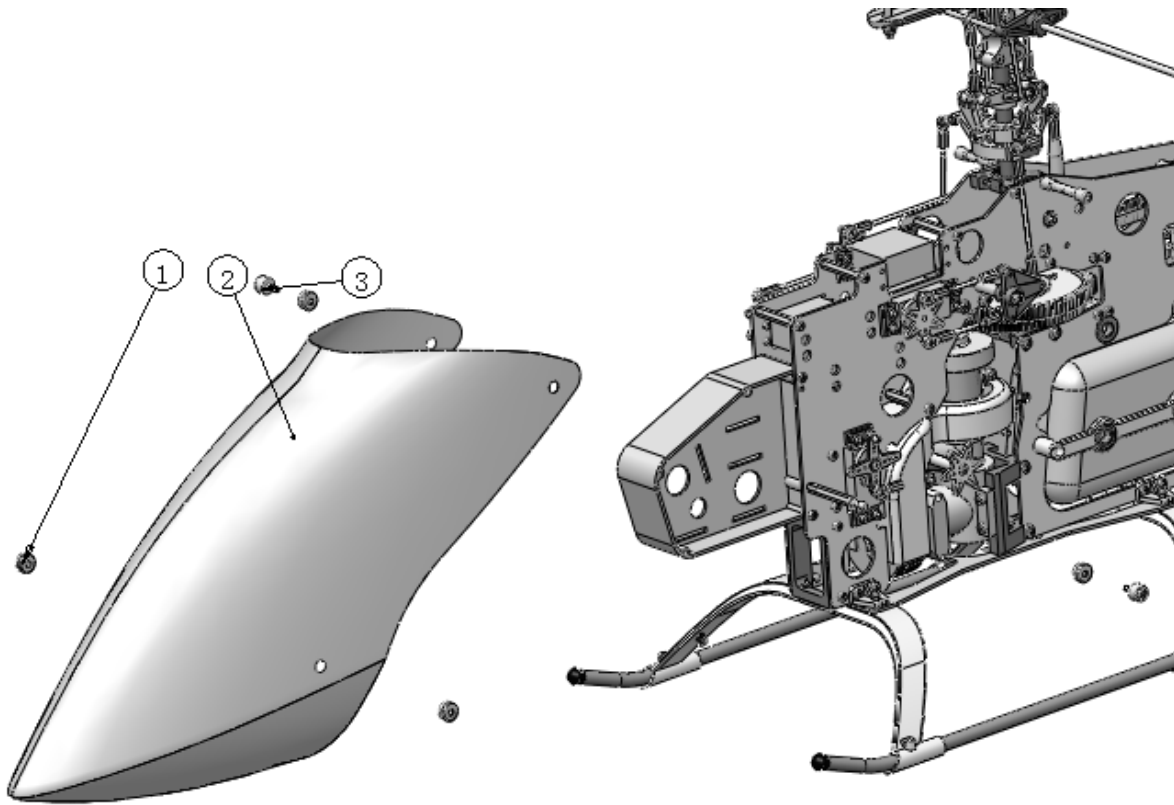


For 120ccpm

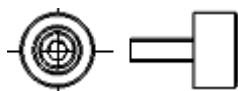


For 140ccpm

17. CANOPY ASSEMBLY



No.	Qty	Item No.	Parts Name
1	4	290-007	Robber Grommet
2	1	254-019	Body
3	2	152-096	Canopy Cap

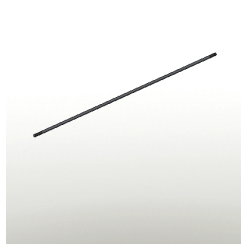


Canopy Cap (4pcs)

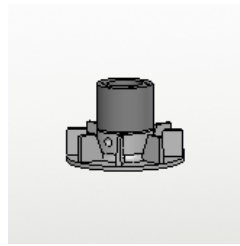
TZV250R/C HELICOPTER SPARE PARTS PICTURES



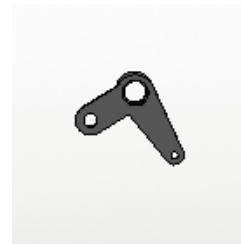
TZ0006



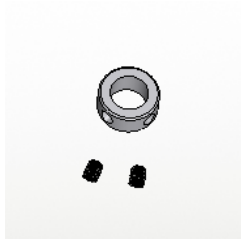
TZ0008



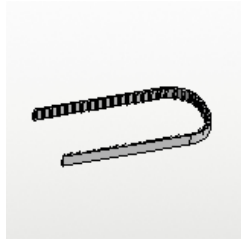
TZ0009



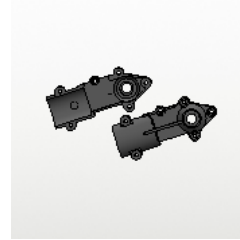
TZ0016



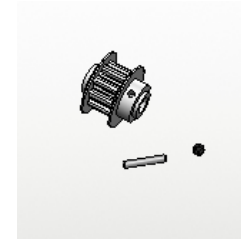
TZ0018



TZ0023



TZ0027



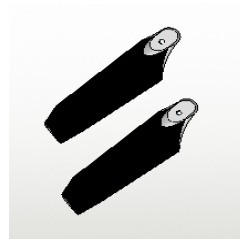
TZ0029



TZ0030



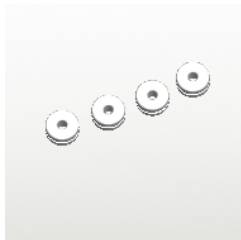
TZ0031 (85T)



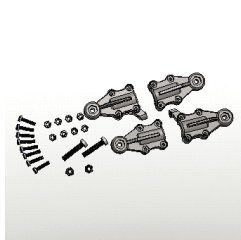
TZ0037



TZ0053



TZ0062



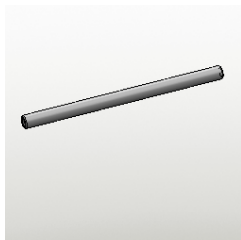
TZ0273



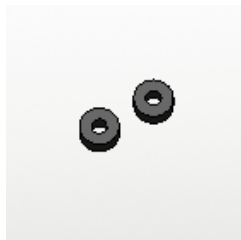
TZ0274



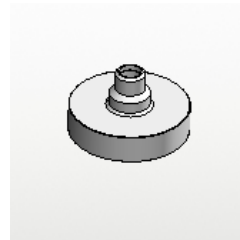
TZ0279



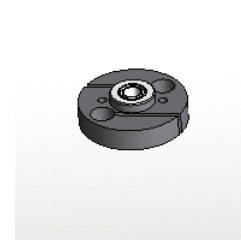
TZ0355



TZ0356



TZ0358



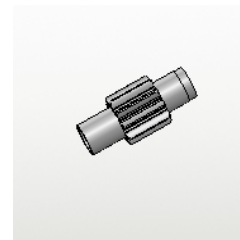
TZ0359



TZ0361



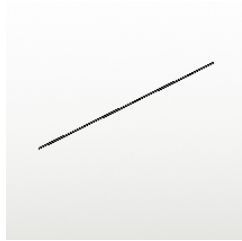
TZ1363



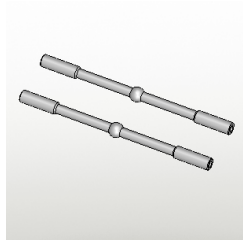
TZ0367



TZ0368



TZ1368



TZ1600



TZ1601



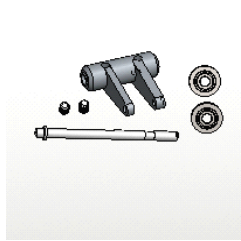
TZ1602



TZ1603



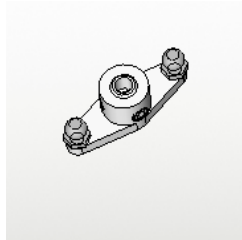
TZ1604



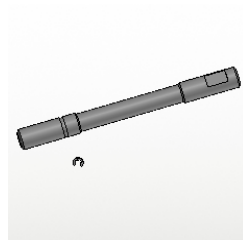
TZ1605



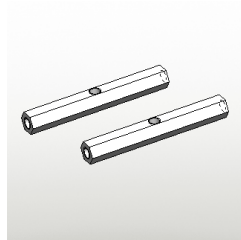
TZ1606



TZ1607



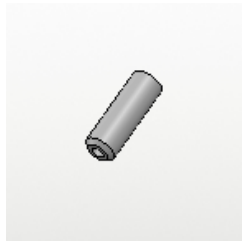
TZ1608



TZ1609



TZ1610 (L=14.5)



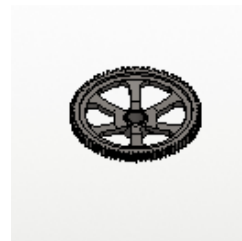
TZ1611 (L=20)



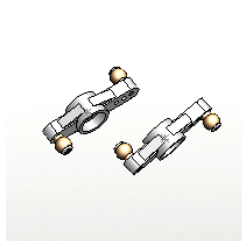
TZ1612



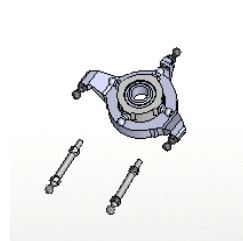
TZ1613



TZ1614 (79T)



TZ1615



TZ1616



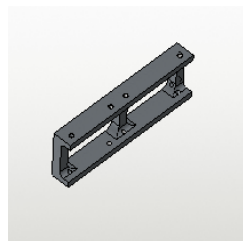
TZ1617



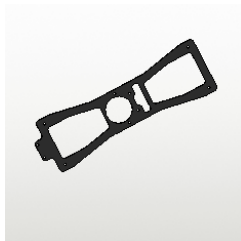
TZ1618



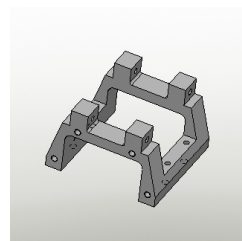
TZ1619



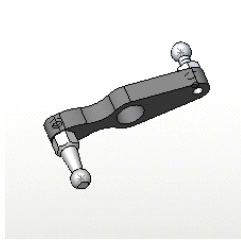
TZ1622



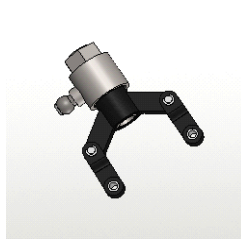
TZ1623



TZ1624



TZ1625



TZ1626



TZ1627



TZ1628



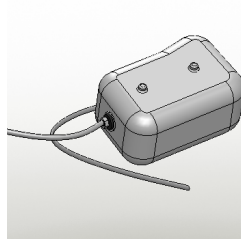
TZ1629



TZ1630



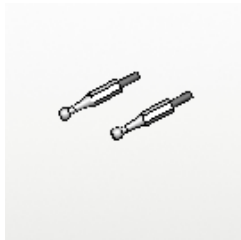
TZ1631



TZ1632



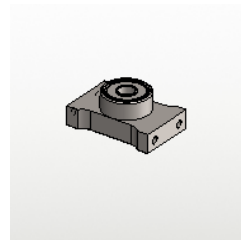
TZ1633



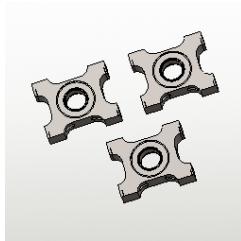
TZ1634



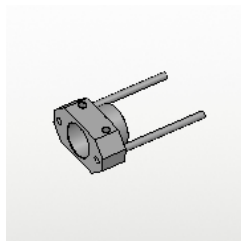
TZ1635



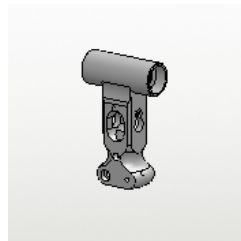
TZ1636



TZ1637



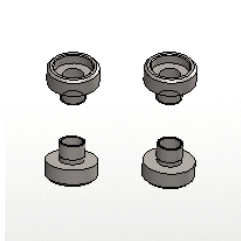
TZ1638



TZ1639



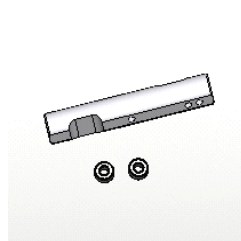
TZ1640



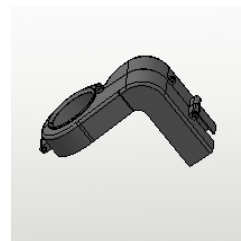
TZ1641



TZ1642



TZ1643



TZ1645



TZ1647



TZ1648



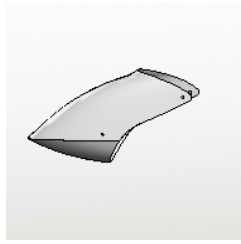
TZ1649



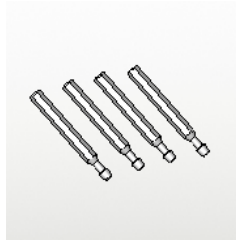
TZ1650



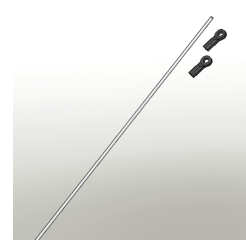
TZ1651



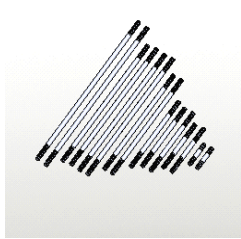
TZ1652



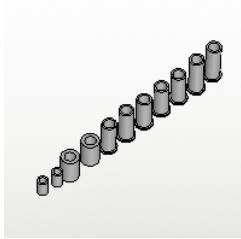
TZ1653



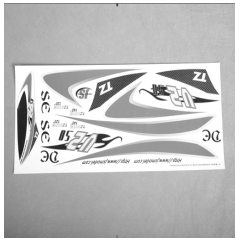
TZ1654



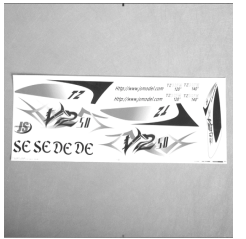
TZ1655



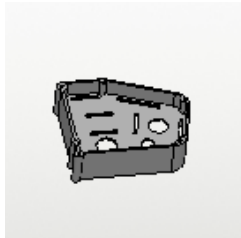
TZ1656



TZ1657 (A)



TZ1657 (B)



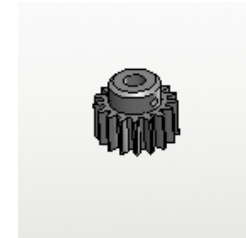
TZ1680



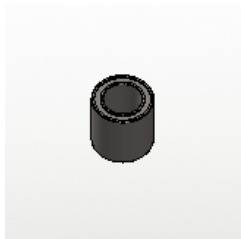
TZ1682



TZ1683



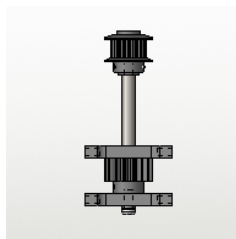
TZ1684



TZ1688



TZ1689



TZ1750

TZ V2 50 CLASS R/C HELI PARTS LIST

PARTS NO.	PARTS NAME	ITEM NO.	DESCRIPTION	QTY
TZ0006	Tail Liner Pulley Assy	250-006	Tail liner Pulley	1
		521-007	Collar, d3×D10×W4	1
TZ0008	Flybar Rod	122-008	Flybar Rod	1
TZ0009	Cooling Fan Assy(50)	250-091	Cooling Fan Assy(50)	1
		122-010	Cooling Fan Assy Mount	1
TZ0016	Tail Pitch Control Lever	250-025	Tail Pitch Control Lever	1
TZ0018	Main Shaft Lock Ring	122-018	Main Shaft Lock Ring	1
TZ0023	Tail Drive Belt(630XL)	250-030	Tail Drive Belt(630XL)	1
TZ0027	Tail Unit Housing	250-031	Tail Unit Housing (R)	1
		250-032	Tail Unit Housing(L)	1
TZ0029	Tail Pulley Set	250-033	Tail Pulley Set	1
		250-034	Tail Pulley Flange	1
		512-009	Pin Ø2×12	1
		507-001	Set Screw, M3×3	1
TZ0030	Tail Rotor Shaft	122-030	Tail Rotor Shaft	1
TZ0031	Main Spur Gear(85T)	250-036	Main Spur Gear(85T)	1
TZ0037	Talk Rotor Blade	250-099	Talk Rotor Blade	2
TZ0053	Rotor Bolt.	504-018	Socket Screw, M4×28	2
		511-002	Lock Nut, M4	2
TZ0062	Body Mount Rubber Grommet	290-007	Body Mount Rubber	4
TZ0273	Tail Rotor Grip	290-065	Tail Pitch Housing(A)	2
		290-066	Tail Pitch Housing(B)	2
		501-003	Socket Screw, M2×8	8
		511-004	Lock Nut, M2	8
		503-010	Socket Screw, M3×16	2
		511-001	Lock Nut, M3	2
TZ0274	Tail Rotor Hub(50)	129-147	Tail Rotor Hub(50)	1
TZ0279	Tail Rod Guide	250-063	Rod Guide	3
		510-007	Self tapping Screw, M2×10	3
TZ0355	Feathering Shaft	122-051	Feathering Shaft	1
TZ0356	Bushing (d6×D15×W7)	250-711	Bushing (d6×D15×W7)	2
TZ0358	Clutch Bell	122-071	Clutch Bell Set	1
		524-002	Bearing, d6×D12×4	1
		250-068	Clutch Liner	1
TZ0359	Clutch	122-089	Clutch	1
		560-003	d 6×D 10×W 12	1
TZ0361	Starter Coupling	122-080	Starter Coupling	1
TZ1363	Servo Mounting Plate	700-067	Servo Mounting Plate	12

PARTS NO.	PARTS NAME	ITEM NO.	DESCRIPTION	QTY
TZ0367	Drive Gear (10T)	122-086	Drive Gear (10T)	1
TZ0368	Clutch Liner	250-068	Clutch Liner	1
TZ1368	Antenna Tube	250-052	Antenna Tube	1
TZ1600	Flybar Arm	154-056	Flybar Arm	2
TZ1601	Tail Boom	154-078	Tail Boom	1
TZ1602	Flybar Arm(A)	254-009	Flybar Arm(A)	2
		154-064	Flybar Arm(B)	2
		507-026	Set Screw, M4×6	4
TZ1603	Main Shaft	154-019	Main Shaft	1
TZ1604	FlyBar Control Lever	254-007	FlyBar Control Lever	2
		250-013	Washout Linkage	2
		512-042	Pin Ø2×12	2
		515-009	Retaining Ring Ø2	4
		122-058	Linkage Ball	2
		509-010	Link Ball Screw, M2×10	2
TZ1605	Elevator Arm	154-021	Elevator Arm	1
		154-067	Control Lever Shaft	1
		550-005	Bearing d4xD8xW3 (F)	2
		515-010	Retaining Ring Ø4	1
		507-025	Set Screw, M4×5	2
TZ1606	Control lever	154-048	Control lever	1
		550-005	Bearing d4xD8xW3 (F)	2
		123-011	Collar d3xD4xW9.2xL0.5	1
		513-005	Flat Washer Ø3×5×0.5	1
		507-018	Set Screw, M3×20	1
		282-006	Ball Link	1
TZ1607	Elevate Arm(B)	154-061	Elevate Arm(B)	1
		122-056	Linkage Ball (L)	2
		511-002	Lock Nut M4	1
		507-025	Set Screw, M4×5	2
TZ1608	Starter Shaft	154-036	Starter Shaft	1
TZ1610	Support Post	154-068	Support Post L=14.5mm	2
TZ1611	Support Pole	154-072	Support Pole L=20mm	2
TZ1612	Ball Link	282-006	Ball Link	10
TZ1613	Main Frame Rubber Grommet	254-030	Main Frame Rubber Grommet	2
TZ1614	Spur Gear (79T)	254-025	Spur Gear (79T)	1
TZ1615	Aileron Control Lever	254-008	Aileron Control Lever	2
		122-058	Linkage Ball	4
		509-008	Link Ball Screw, M2×8	4
TZ1616	Swash Plate Assy	154-063	Metal Swash Plate Assy	1
		254-013	Swash Plate Assy	1

PARTS NO.	PARTS NAME	ITEM NO.	DESCRIPTION	QTY
		529-002	Bearing, d25×D37×W7	
		122-056	Linkage Ball	2
		122-108	Linkage Ball	5
		154-035	Linkage Bal	2
		510-031	Self tapping Screw, M3×5	3
TZ1617	One Way Clutch Housing Set	154-051	One Way Clutch Housing Set	1
		560-008	One Way Bearing, d10×D14×W8	1
		528-007	Bearing, d10×D19×W4	2
TZ1618	Main Frame	154-081	Main Frame (R)	1
		154-082	Main Frame (L)	1
TZ1619	Metal Frame Spacer	154-049	Metal Frame Spacer	8
TZ1622	U-Beamcross Member	154-046	U-Beamcross Member	1
TZ1623	Base Plate	154-047	Base Plate	1
TZ1624	Engine Mount	154-071	Engine Mount	1
TZ1625	Bell Crank	254-022	Bell Crank	1
		154-060	Mounting Bracket	1
		122-108	Stainless Steel Linkage Ball	1
		150-018	Linkage Ball	1
TZ1626	Tail Pitch Slider	154-075	Tail pitch Control Slide Bushing	1
		250-026	Tail pitch Control Fork	1
		250-027	Tail pitch Control Linkage	2
		250-028	Tail pitch Control Slider	1
		509-008	Link Ball Screw, M2×8	2
		123-008	Collar d2×D3×L4.5	2
		123-002	Collar d3×D4×10×L0.5	1
		524-001	Bearing, d6×D10×W3	2
		512-041	Pin, Ø2×9	2
		122-058	Linkage Ball	1
		508-008	Semicircle Cross Screw, M2×12	2
		511-009	Lock Nut, M6	1
		515-009	Retaining Ring ,Ø2	4
TZ1627	Skid	122-031	Skid	2
		250-040	Skid Cap	4
TZ1628	Skid Brace	285-005	Skid Brace	2
		507-003	Set Screw, M3×5	4
TZ1629	Landing Struts Adapter	254-011	Landing Struts Adapter	4
TZ1630	Tail Support Rod (50)	122-043	Tail Support Rod (50)	2
		250-064	Tail Support Rod End	4
TZ1631	Tail Support Rod End	250-064	Tail Support Rod End	4
TZ1632	Fuel Tank	285-014	Fuel Tank	1
		282-011	Fuel Tank Grommet	1

PARTS NO.	PARTS NAME	ITEM NO.	DESCRIPTION	QTY
		152-033	Fuel Tank Nipple	1
		122-083	Clunk	1
		250-081	Silicone Fuel Tube (3×1.5)	1
		254-018	Silicone Fuel Tube (5×2.5)	2
		511-008	Lock Nut, M5	1
TZ1633	Fuel Tank Rubber Grommet	290-059	Fuel Tank Rubber Grommet	4
TZ1634	Linkage Ball (L)	154-035	Linkage Ball (L)	2
TZ1635	Flybar Paddle	282-012	Flybar Paddle	2
		122-151	Locker	2
TZ1636	Clutch Brg Case	154-022	Clutch Brg Case	1
		524-006	Bearing, d6×D15×5	1
		526-006	Bearing, d8×D16×5	1
TZ1637	Brg Case	154-023	Brg Case	3
		528-002	Bearing, d10×D19×5	3
TZ1638	Washout Base Metal	154-052	Washout Base Metal	1
		154-066	Locate staff	2
TZ1639	Main Rotor Pedestal	154-050	Main Rotor Pedestal	1
		521-003	Bearing, d3×D8×3	2
TZ1640	Main Rotor Grip Metal	154-062	Main Rotor Grip Metal	2
		524-005	Bearing, d6×D13×5	2
		154-054	Main Rotor Grip Metal	2
		122-047	Main Rotor Grip Screw	4
		580-001	Thrust Bearing d6×D12×W4.5	2
		513-025	Flat Washer Ø6×8×0.6	2
		519-056	Counter Sink Socket ScrewM3x6	2
		519-003	Counter Sink Socket ScrewM3x8	2
TZ1641	Main Rotor Grip Screw	122-047	Main Rotor Grip Screw	4
TZ1642	Main Rotor Grip Metal	154-054	Main Rotor Grip Metal	2
TZ1643	Flybar Screw Hub	154-055	Flybar Screw Hub	1
		521-002	Bearing d3xD7xW3	2
TZ1645	Fan Shroud Set	254-001	Fan Shroud Set (R)	1
		254-002	Fan Shroud Set (L)	1
		510-017	Self tapping Screw, M2.5×8	3
TZ1646	Guide Pulley Assy	152-014	Guide Pulley	2
		550-005	Bearing, d4×D8×W3 (F)	4
		123-013	Collar d3×D4×W11.2×L0.5	2
		154-026	Pulley Assy mount	1
TZ1647	Tail Boom Holder	254-004	Tail Boom Holder	2
TZ1648	Tank Stay	254-006	Tank Stay	2
TZ1649	Control lever	254-015	Control lever	2
		122-058	Linkage Ball	6

PARTS NO.	PARTS NAME	ITEM NO.	DESCRIPTION	QTY
		509-008	Link Ball Screw, M2×8	6
TZ1650	Level Tail Fin Mount	254-021	Level Tail Fin Mount	1
TZ1651	Tail Fin	254-016	Stabilizer Fin Metal	1
		254-017	Vertical Fin Metal	1
TZ1652	canopy (FRP)	254-019	canopy (FRP)	1
TZ1654	Pulley Pull Rod	154-069	Pulley Pull Rod (640mm)	1
		154-074	Pulley Pull Rod (220mm)	1
TZ1655	Link Rod	610-101	Linkage Rod (L=14)	2
		610-104	Linkage Rod (L=30)	2
		610-106	Linkage Rod (L=40)	2
		610-112	Linkage Rod (L=45)	1
		610-114	Linkage Rod (L=65)	2
		610-115	Linkage Rod (L=80)	4
TZ1656	Collar	610-117	Linkage Rod (L=95)	2
		123-001	Collar d3xD4xW8.5xL0.5	3
		123-002	Collar d3xD4xW10xL0.5	1
		123-008	Collar d2xD3xW4.5	2
		123-011	Collar d3xD4xW9.2xL0.5	1
		123-013	Collar d3xD4xW11.2xL0.5	2
123-110	Collar d3xD5xW7.5	2		
TZ1657-A	Decal	TZ1657	Decal	1
TZ1657-B	Decal	TZ1657	Decal	1
TZ1658	Bearing d3xD8xW3	521-003	Bearing d3xD8xW3	10
TZ1659	Bearing d4xD7xW2.5	522-001	Bearing d4xD7xW2.5	2
TZ1660	Bearing d4xD8xW3	522-002	Bearing d4xD8xW3	4
TZ1661	Bearing d5xD10xW4	523-001	Bearing d5xD10xW4	2
TZ1662	Bearing d5xD11xW5	523-004	Bearing d5xD11xW5	2
TZ1663	Bearing d5xD10xW3	523-008	Bearing d5xD10xW3	2
TZ1664	Bearing d6xD10xW3	524-001	Bearing d6xD10xW3	2
TZ1665	Bearing d6xD13xW5	524-005	Bearing d6xD13xW5	4
TZ1666	Bearing d8xD16xW5	526-006	Bearing d8xD16xW5	1
TZ1667	Bearing d10xD19xW5	528-002	Bearing d10xD19xW5	3
TZ1668	Bearing d3xD7xW3 (F)	550-004	Bearing d3xD7xW3 (F)	2
TZ1669	Bearing d4xD8xW3 (F)	550-005	Bearing d4xD8xW3 (F)	6
TZ1670	Bearing d3xD8xW3 (F)	550-030	Bearing d3xD8xW3 (F)	2
TZ1671	One Way Bearing d6×D10×W12	560-003	One Way Bearing d6×D10×W12	1
TZ1672	Thrust Bearing d6×D12×W4.5	580-001	Thrust Bearing d6×D12×W4.5	2
TZ1673	Thrust Bearing d5×D10×W4	580-002	Thrust Bearing d5×D10×W4	2
TZ1674	Bearing d3xD7xW3	521-002	Bearing d3xD7xW3	2
TZ1680	Frame	254-026	Frame	1
TZ1682	Drive Gear Shaft	154-086	Drive Gear Shaft	1

PARTS NO.	PARTS NAME	ITEM NO.	DESCRIPTION	QTY
		503-002	Socket Screw M3x5	1
TZ1683	Main Shaft Bearing Block	154-084	Main Shaft Bearing Block	2
		523-007	Brg d5×D13×w4	2
TZ1684	Tail Drive Spur Gear	290-054	Tail Drive Spur Gear (17T)	1
TZ1685	Flat Washer	513-005	Flat Washer Ø3×5×0.5	4
		513-011	Flat Washer Ø3×8×1	4
		513-013	Flat Washer Ø4×10×1	4
		513-025	Flat Washer Ø6×8×0.6	4
		513-026	Flat Washer Ø6×8×1	4
		513-034	Flat Washer Ø5×7×1	4
		513-041	Flat Washer Ø10x14x0.5	4
		513-043	Flat Washer Ø9.5x12x1	4
TZ1689	Link Rod (For 140CCPM)	610-103	Linkage Rod(L=25)	2
		610-110	Linkage Rod(L=60)	2
		282-006	Ball Link	8
TZ1690	Body Catch	154-073	Body Catch	2
		154-090	Metal Frame Spacer	2
		507-018	Set Screw, M3×20	2
		152-096	Canopy Cap	2
		503-007	Socket Screw, M3×12	2
TZ1750	Tail Drive Spur Gear Assembly	290-054	Tail Drive Spur Gear (17T)	1
		154-086	Drive Gear Shaft	1
		503-002	Socket Screw M3x5	1
		154-084	Main Shaft Bearing Block	2
		523-007	Brg d5×D13×w4	2
		250-033	Tail Pulley Set	1
		250-034	Tail Pulley Flange	1
		512-009	Pin Ø2×12	1
507-001	Set Screw, M3×3	1		
TZV250	TZV250Heli			1
JSS1019	Metal Tail Case	122-110	Tail Unit Housing	1
		122-112	Tail Unit Housing Right	1
		550-025	Bearing d5xD10xW4 (F)	2
		122-135	Tail Pitch Bracket	1
		503-005	Socket Screw M3x8	2
		503-012	Socket Screw M3x18	1
		513-035	Flat Washer Ø5×7×0.5	1
		513-036	Flat Washer Ø5×7×1.5	1
JSS1020	Tail Case Retaining Mount	122-109	ail Case Retaining Mount	1
		122-111	Tail Strength Ferrule	1
		503-003	Socket Screw M3x6	2
		503-005	Socket Screw M3x8	4

PARTS NO.	PARTS NAME	ITEM NO.	DESCRIPTION	QTY
JSS1022	Metal Tail Pulley Assy	JSS1022	Metal Tail Pulley Assy	1
JSS1027	Carbon Fiber Tail Boom (V250 Class)	JSS1027	Carbon Fiber Tail Boom (V250 Class)	1
JSS1028	Carbon Fiber Tail Support (V250 Class)	JSS1028	Carbon Fiber Tail Support (V250 Class)	2
JSS1035	Tail Liner Pulley Assy	JSS1035	Tail Liner Pulley Assy	1
JSS1101	Aileron Control Lever	154-095	Aileron Control Lever	2
		521-003	Bearing d3xD8xW3	4
		122-058	Linkage Ball	4
		509-008	Link Ball Screw, M2×8	4
JSS1102	Flybar Arm	154-094	Flybar Arm	2
		507-024	Set Screw, M4×4	4
JSS1103	Swash Plate Assy	154-063	Metal Swash Plate Assy	1
		154-070	Metal Swash Plate Assy	1
		529-002	Bearing, d25×D37×W7	1
		122-056	Linkage Ball	2
		122-108	Linkage Ball	5
		154-035	Linkage Ball	2
		510-031	Self tapping Screw, M3×5	3
JSS1104	Metal Flybar Control Lever	129-109	Metal Flybar Control Lever	2
		550-005	Bearing, d4×D8×W3 (F)	4
		250-013	Washout Linkage	2
		122-058	Linkage Ball	2
		509-010	Link Ball Screw, M2×10	2
		512-042	Pin Ø2×12	2
		515-009	Retaining Ring Ø2	4
		506-009	Socket Screw, M3×12	2
JSS1105	Metal Control Lever	154-020	Metal Control Lever	2
		122-056	Linkage Ball	6
		123-110	Collar d3×D5×W7.5	2
		521-003	Bearing, d3×D8×W3	4
JSS1106	Tail Pitch Slider	154-076	Tail pitch Control Slide Bushing	1
		152-046	Tail pitch Control Fork	1
		250-027	Tail pitch Control Linkage	2
		152-053	Tail pitch Control Slider	1
		123-008	Collar d2×D3×L4.5	2
		526-001	Bearing, d8×D12×W3.5	2
		512-041	Pin, Ø2×9	2
		122-058	Linkage Ball	1
		509-008	Link Ball Screw, M2×8	1
		508-008	Semicircle Cross Screw, M2×12	2

PARTS NO.	PARTS NAME	ITEM NO.	DESCRIPTION	QTY
		515-009	Retaining Ring ,Ø2	4
JSG2001	Extended 6mm hex starting tool	JSG2001	Extended 6mm hex starting tool	1
JSG2001-1	Starter Extension (Include One Way Brg)	JSG2001-1	Starter Extension (Include One Way Brg)	1
JSG2002	Precision Pitch Gauge	JSG2002	Precision Pitch Gauge	1
JSG2003	Piston and rod end set tools	JSG2003	Piston and rod end set tools	2
JSG2004	Hex Wrench Drivers	JSG2004	Hex Wrench Drivers	1
JSG2005	Blade Support (For30-50 Class)	JSG2005	Blade Support (For30-50 Class)	1
JSG2006	Blade Support (For60-90 Class)	JSG2006	Blade Support (For60-90 Class)	1
JSG2007	Fuel Tube Grip	700-068	Fuel Tube Grip	2
JSG2009	Magic Belt	JSG2009	Magic Belt	2
JSG2010	Connector Wire	JSG2010	Connector Wire	4
JSG2011	Swash Plate Assy Regulator (For50 Class)	155-060	Swash Plate Assy Regulator (For50 Class)	1